

Powered Damper Water Heaters



The Professional *Ultra*™ Powered Damper gas water heaters are energy efficient and offer a 12-year warranty

Efficiency

- .68 - .70 UEF
- ENERGY STAR® rated

Performance

- FHR: 78 - 85 gallons
- Recovery: Up to 40.4 GPH at a 90° F rise, depending on model

Self-Diagnostic System

- Electronic gas control for improved monitoring and service

Low Emissions

- Eco-friendly burner, low NOx design
- Meets 40 ng/J NOx requirements



- EcoNet® WiFi-connected† technology and free mobile app gives users control over water systems, allowing for customizable temperature, vacation settings, energy savings and system monitoring at home or away. Visit Ruud.com/EcoNetConnect



- Water sensor detects water outside of the unit and sends an alert via the free EcoNet® mobile app to the homeowner
- EcoNet® WiFi Kit included

Technology

- 24 VAC flue damper, 110 VAC outlet required
- Includes 19-foot cord, 3-prong plug
- Standard Cat. I, double-wall, B-vent, 3" (4" adaptor included)

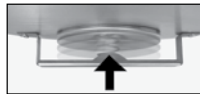


What is a Powered Damper?

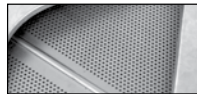
The 24-volt powered flue damper is positioned atop the unit. It opens and closes automatically in response to gas-burner activity. When the combustion stops, it signals the damper to close, trapping the heat inside the flue and delivering more heat to the water.

Guardian System™ & Sensor

- Exclusive air/fuel shut-off device
- Maintenance free – no filter to clean
- Disables the heater in the presence of flammable vapor accumulation



Combustion Shut-off System



Flame Arrestor Plate



Maintenance Free

Longer Life

- Premium grade anode rod provides long-lasting tank protection

High Altitude Compliant

- Certified to 10,100 ft. above sea level

Plus...

- Dual certified for both potable water and space heating
- Enhanced flow brass drain valve
- Temperature and pressure relief valve included
- Low lead compliant
- EverKleen™ patented system fights sediment build-up
- Standard replacement parts

Warranty

- 12-Year limited tank and parts warranty*

*See Residential Warranty Certificate for complete information

† WiFi broadband internet connection required

Units meet or exceed ANSI requirements and have been tested according to D.O.E. procedures. Units meet or exceed the energy efficiency requirements of NAECA, ASHRAE standard 90, ICC Code and all state energy efficiency performance criteria.



**Professional *Ultra*
Powered Damper**
38 and 50-Gallon Capacities
Up to 40,000 BTU/h
Natural and LP Gas



LEED Point = 1

See specifications chart on back.

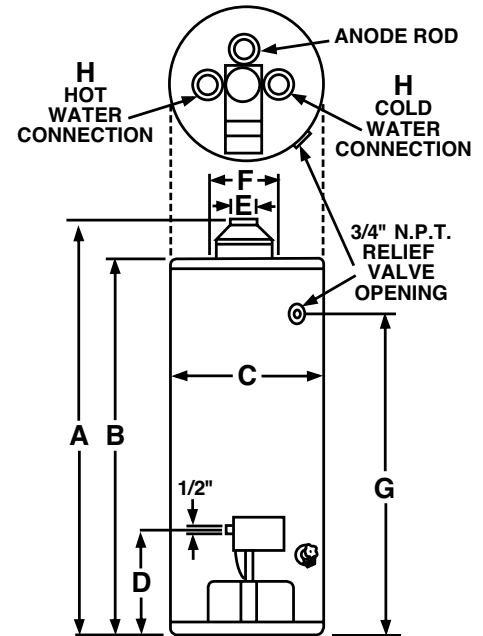
Powered Damper Water Heaters



Specifications

DESCRIPTION			FEATURES						ROUGHING IN DIMENSIONS (SHOWN IN INCHES)										ENERGY INFO.	
TYPE	NOMINAL GALLON CAPACITY	RATED GALLON CAPACITY	MODEL NUMBER	GAS INPUT IN THOUS. BTU/H		RECOVERY IN G.P.H. 90° F RISE		UEF FIRST HR. DEL. G.P.H.		HEIGHT TO VENT A	TANK HEIGHT B	DIAM. C	HT. TO GAS CONN. D	VENT SIZE E	WATER CONN. CENTER F	HT. TO SIDE T&P VALVE G	WATER CONN. SIZE H	SHIP WT. (LBS)	UNIFORM ENERGY FACTOR (UEF)	
				NAT.	LP	NAT.	LP	NAT.	LP											
Tall	38	37	PROU G38-40N RU69 PD	40	-	40.4	-	85	-	62-3/4	57-3/4	19-3/4	14	3 or 4	8	52-1/4	3/4	140	0.70	
Tall	38	37	PROU G38-36P RU69 PD	-	36	-	36.4	-	85	62-3/4	57-3/4	19-3/4	14	3 or 4	8	52-1/4	3/4	140	0.70	
Tall	50	48	PROU G50-40N RU67 PD	40	-	40.4	-	78	-	63	58	21-3/4	14	3 or 4	8	52-1/2	3/4	160	0.68	
Tall	50	48	PROU G50-36P RU67 PD	-	36	-	36.4	-	78	63	58	21-3/4	14	3 or 4	8	52-1/2	3/4	160	0.68	

Uniform Energy Factor and rated gallon capacity based on Department of Energy (DOE) requirements.



In keeping with its policy of continuous progress and product improvement, Ruud reserves the right to make changes without notice.