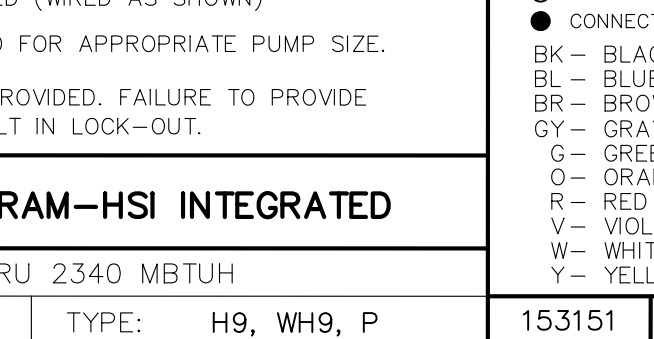
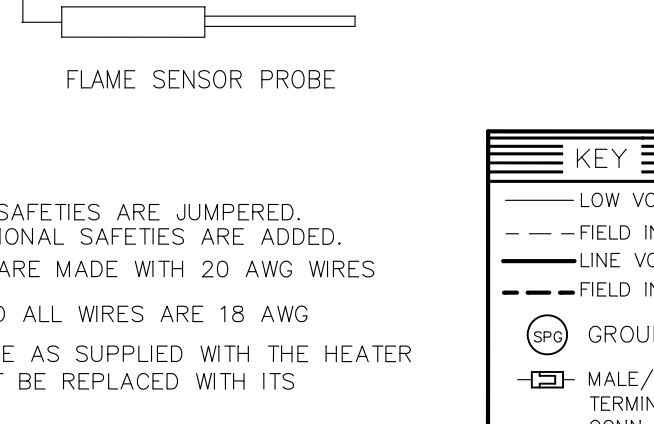
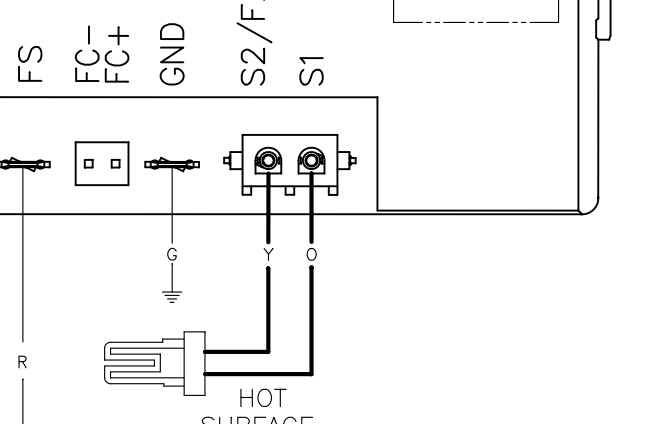
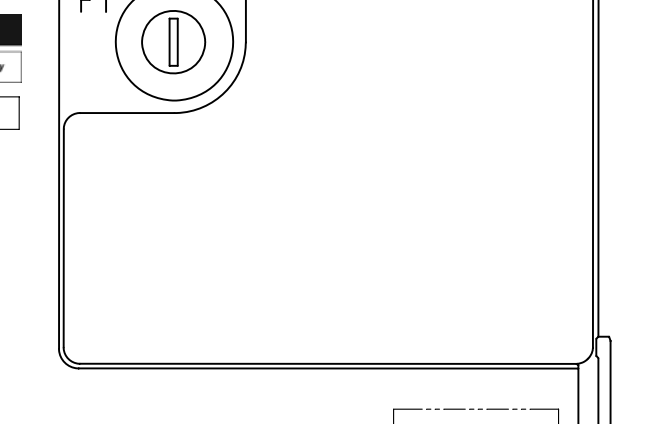
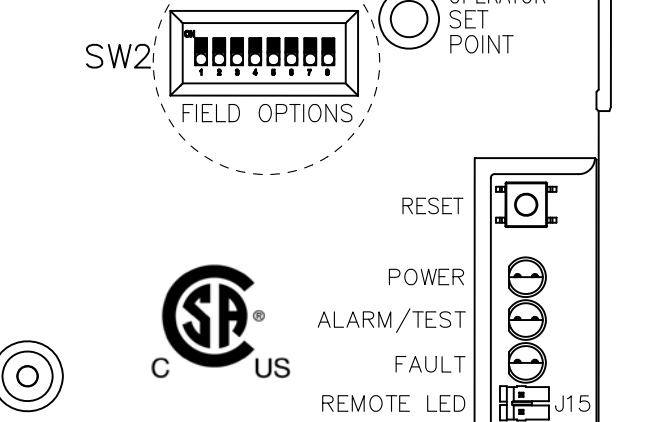
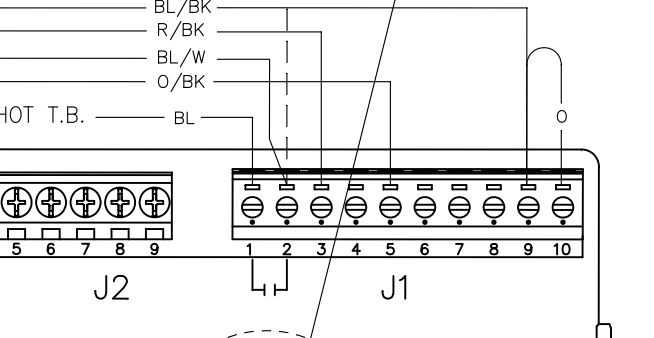
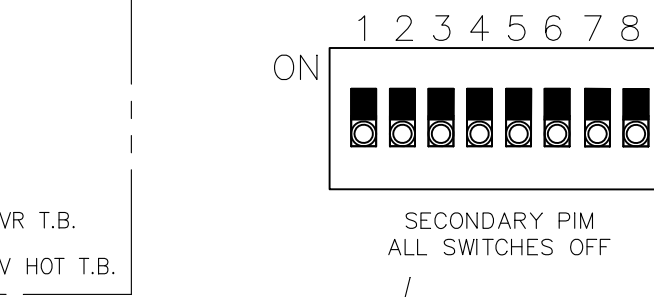
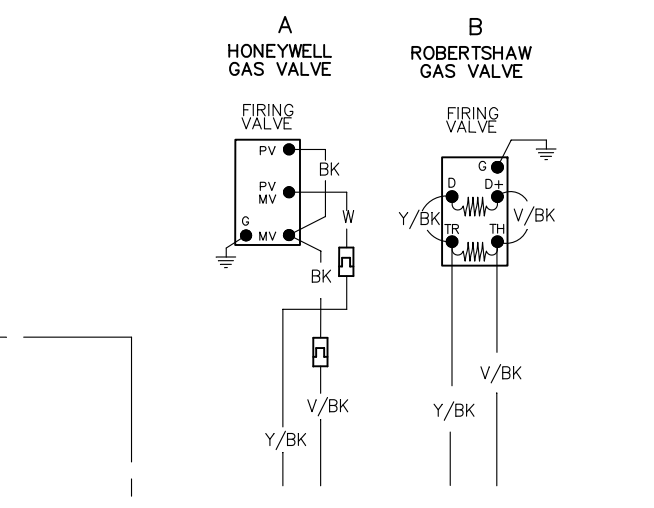


FUEL	MODEL SIZE	GV1	GV1A	GV2	GV3	GV4
NAT	1532C	A	A	A	A	A
	1802C	B		A	B	B
	2002C/2072C	A	B	B	B	A
	2342C	B	B	B	B	B
PRO	1532C	A	A	A	A	A
	1802C	A	A	A	A	A
	2072C	A	A	A	A	A



NOTES:

- IF ANY OF THE ORIGINAL WIRE AS SUPPLIED WITH THE HEATER MUST BE REPLACED, IT MUST BE REPLACED WITH ITS EQUIVALENT 105°C.
- USE GROUND CONNECTION PROVIDED. FAILURE TO PROVIDE PROPER GROUND MAY RESULT IN LOCK-OUT.
- CHECK CONTROLS PROVIDED (WIRED AS SHOWN).
- PUMP RELAY MUST BE RATED FOR APPROPRIATE PUMP SIZE.

KEY:

- LOW VOLTAGE
- FIELD INSTALL
- LINE VOLTAGE
- FIELD INSTALL
- GROUND
- MALE/FEM TERMINAL CONN
- TERMINAL CONNECTION
- BLACK - BLACK
- BL - BLUE
- BR - BROWN
- GY - GRAY
- G - GREEN
- O - ORANGE
- R - RED
- V - VIOLET
- W - WHITE
- Y - YELLOW

CHECKED BY: _____
 APPROVED BY: _____
 ORIG. E.O. 5568
 11/07/16
 CHG. E.O. 5671
 03/07/17
Raypak

INPUTS: 1530 THRU 2340 MBTUH
 SIZE: 1532C-2342C TYPE: H9, WH9, P 153151 2

