



The new degree of comfort.®

Professional Classic® Power Vent gas water heaters offer up to 100 foot vent runs, energy efficiency and the Guardian System

Efficiency

- .61 - .69 UEF
- ENERGY STAR® rated

Performance

- FHR: 64 - 86 gallons
- Recovery: 32.4 to 42.4 GPH at a 90° F rise

Self-Diagnostic System

- Electronic gas control for improved monitoring and service



Low Emissions

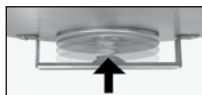
- Eco-friendly burner, low NOx design

Features

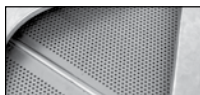
- Uses indoor air for combustion; blower exhausts the flue gases
- Standard 120 VAC electrical connection
- New whisper quiet blower

Guardian System™ & Sensor

- Exclusive air/fuel shut-off device
- Maintenance free – no filter to clean
- Protective control system that disables the heater in the presence of flammable vapor accumulation



Combustion Shut-off System



Flame Arrestor Plate



Maintenance Free

Flexible Venting Options

- Long venting lengths up to 100 equivalent feet
- PVC, ABS, or CPVC vent pipe options
- Vertical or horizontal termination

Longer Life

- Premium grade anode rod provides long-lasting tank protection

High Altitude Compliant

- Tall models certified for applications up to 7,700 ft. above sea level and short models up to 5,999 feet above sea level

Plus...

- Enhanced flow brass drain valve
- Temperature and pressure relief valve included
- Low lead compliant
- Durable Silicon Nitride Ignitor (HSI)
- EverKleen™ patented system fights sediment build-up
- Standard replacement parts

Warranty

- 6-Year limited tank and parts warranty*
- With ProtectionPlus™ the 6-year limited tank warranty becomes 10-year

*See Residential Warranty Certificate for complete information

Units meet or exceed ANSI requirements and have been tested according to D.O.E. procedures. Units meet or exceed the energy efficiency requirements of NAECA, ASHRAE standard 90, ICC Code and all state energy efficiency performance criteria.



Professional Classic Power Vent

40 and 50-Gallon Capacities
 Up to 42,000 BTU/h
 Natural and LP Gas



LEED Point = 1

See specifications chart on back.





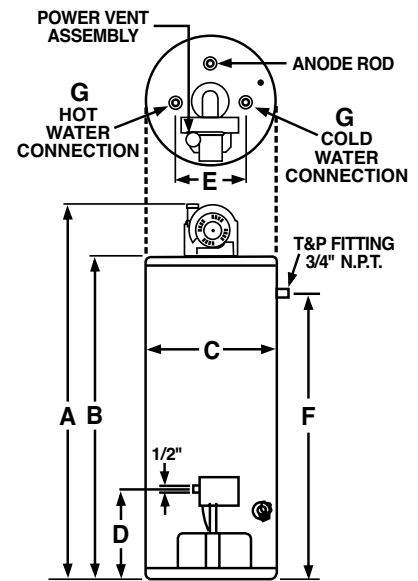
The new degree of comfort.®



Professional Classic® Power Vent Specifications

DESCRIPTION				FEATURES						ROUGHING IN DIMENSIONS (SHOWN IN INCHES)								ENERGY INFO.
TYPE	NOMINAL GALLON CAPACITY	RATED GALLON CAPACITY	MODEL NUMBER	GAS INPUT IN THOUS. BTU/H		RECOVERY IN G.P.H. 90° F RISE		UEF FIRST HR. DEL. G.P.H.		HEIGHT TO TOP OF ASSEMBLY A	TANK HEIGHT B	DIAM. C	HT. TO GAS CONN. D	WATER CONN. CENTER E	HT. TO SIDE T&P VALVE F	WATER CONN. SIZE G	SHIP WT. (LBS)	UNIFORM ENERGY FACTOR (UEF)
				NAT.	LP	NAT.	LP	NAT.	LP									
Tall	40	38	PROG40-40N RH67 PV	40	-	40.4	-	86	-	67-3/8	59	19-3/4	14	8	53-1/2	3/4	140	0.69
Tall	40	38	PROG40-36P RH67 PV	-	36	-	36.4	-	86	67-3/8	59	19-3/4	14	8	53-1/2	3/4	140	0.69
Tall	50	48	PROG50-42N RH67 PV	42	-	42.4	-	78	-	66-3/8	58	21-3/4	14	8	52-1/2	3/4	170	0.68
Tall	50	48	PROG50-42P RH67 PV	-	42	-	42.4	-	78	66-3/8	58	21-3/4	14	8	52-1/2	3/4	170	0.68
Short	40	39	PROG40S-36N RH67 PV	36	-	36.4	-	64	-	62-1/2	51-1/4	21-3/4	14	8	44-1/4	3/4	155	0.61
Short	40	39	PROG40S-32P RH67 PV	-	32	-	32.4	-	64	62-1/2	51-1/4	21-3/4	14	8	44-1/4	3/4	155	0.61
Short	50	48	PROG50S-36N RH67 PV	36	-	36.4	-	80	-	62-1/2	51-1/4	23-3/4	14	8	44	3/4	175	0.65
Short	50	48	PROG50S-32P RH67 PV	-	32	-	32.4	-	80	62-1/2	51-1/4	23-3/4	14	8	44	3/4	175	0.65

Uniform Energy Factor and rated gallon capacity based on Department of Energy (DOE) requirements.



Maximum and Minimum Vent Lengths for 2" Vents

NUMBER OF 90° ELBOWS WITH VENT TERMINAL	NUMBER OF 45° ELBOWS	MINIMUM PIPE LENGTH REQ. (FT.)	MAXIMUM PIPE LENGTH (FT.) 0' - 2000'	MAXIMUM PIPE LENGTH (FT.) 2000' - 7700' *
One (1)	None	4.0	44.0	24.0
One (1)	One (1)	4.0	41.0	21.0
Two (2)	None	4.0	38.0	18.0
Two (2)	One (1)	4.0	35.0	15.0
Three (3)	None	4.0	32.0	12.0

For the 2" vent, one 90° elbow is approximately equal to 6 feet of pipe.
One 45° elbow is approximately equal to 3 feet of pipe.
*2,000' - 6,000' for short models.

Maximum and Minimum Vent Lengths for 3" Vents

NUMBER OF 90° ELBOWS WITH VENT TERMINAL	NUMBER OF 45° ELBOWS	MINIMUM PIPE LENGTH REQ. (FT.)	MAXIMUM PIPE LENGTH (FT.) 0' - 2000'	MAXIMUM PIPE LENGTH (FT.) 2000' - 7700' *
One (1)	None	5.0	95.0	75.0
One (1)	One (1)	5.0	92.5	72.5
Two (2)	None	5.0	90.0	70.0
Two (2)	One (1)	5.0	87.5	67.5
Three (3)	None	5.0	85.0	65.0

For the 3" vent, one 90° elbow is approximately equal to 5 feet of pipe.
One 45° elbow is approximately equal to 2.5 feet of pipe.
*2,000' - 6,000' for short models.

In keeping with its policy of continuous progress and product improvement, Rheem reserves the right to make changes without notice.

Rheem Water Heating • 1115 Northmeadow Parkway, Suite 100
Roswell, Georgia 30076 • www.rheem.com



INTEGRATED HOME COMFORT