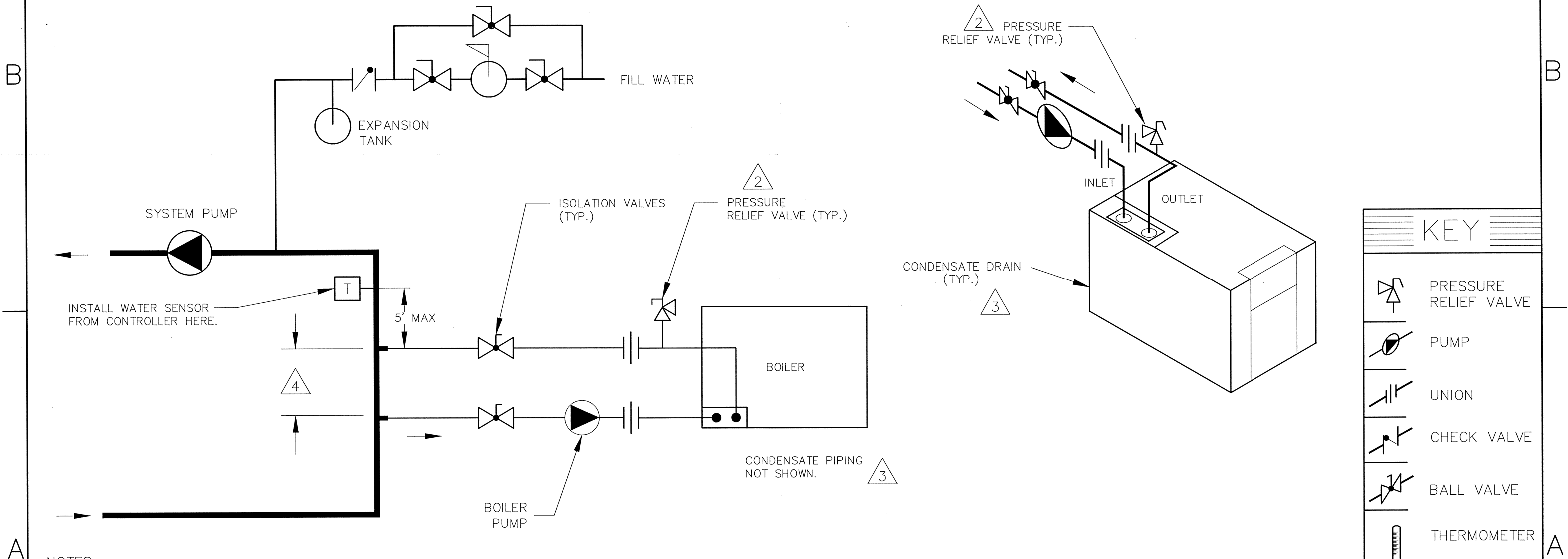


PIPE SIZES	
	BOILER
300	1-1/2"
400	2"
500	2"
700	2"
850	2"

REVISIONS					
REV	DESCRIPTION	E.O.	BY	DATE	CHECK
1	REVISED PIPE TABLE, TITLE, NOTE 3. REVISED BOILER PIPING.		KA	12-21-11	DRB
2	ADDED NOTE 4.		KA	8-18-14	<i>AKA</i>



- NOTES:
- MINIMUM PIPE SIZE MUST BE EQUAL TO THE BOILER INLET / OUTLET SYSTEM FLOW MUST EXCEED BOILER FLOW BY AT LEAST 20%.
  - PIPE ALL RELIEF VALVES TO DRAIN, OR AS LOCAL CODES REQUIRE.
  - PIPE CONDENSATE DRAIN TO DISCHARGE PER LOCAL CODE, OR NEUTRALIZE AND DRAIN TO DISCHARGE PER LOCAL CODE. CONDENSATE MUST NOT BE ALLOWED TO FREEZE.
  - DECOUPLER SPAN MUST NOT EXCEED 4 PIPE DIAMETERS OR 12", WHICHEVER IS LESS.

ACAD: 8726.DWG

BOILER SHOWN REPRESENTS VARIOUS MODELS. BECAUSE INDIVIDUAL MODELS WILL VARY IN DESIGN AND SIZING, SEE EACH SPECIFIC BOILER TYPE FOR DETAILS.

8726	UNLESS OTHERWISE SPECIFIED: ALL UNITS ARE IN INCHES FRACTIONS ±1/32 ANGLES ±1° X. = ±.12 X.X = ±.06 X.XX = ±.03 X.XXX = ±.010 DRAFT ___ WALL ___ RADII ___ CONCENTRICITIES .020 DIA. SQUARENESS .015 IN./IN. BREAK EDGES .015 MAX. SURFACE FINISH PER ASME Y14.36M-1996	APPROVED <i>[Signature]</i>	DATE 9/8/14	 OXNARD, CALIFORNIA	
	CHECKED D BALDWIN	DATE 1-24-11			
	DRAWN K ANDREW	DATE 1-19-11	E.O. SPR	SCALE NONE	
	TITLE PIPING, HYDRONIC: 1 XFYRE	SIZE B	THIS DRAWING SUBMITTED UNDER CONFIDENTIAL RELATIONSHIP, AS IT EMBODIES PROPRIETARY INFORMATION, WITH ALL RIGHTS RESERVED BY RAYPAK, INC.		
2	MAT'L.	SERIES/MODEL H7 300-850	DWG. NO. 8726	REV 2	