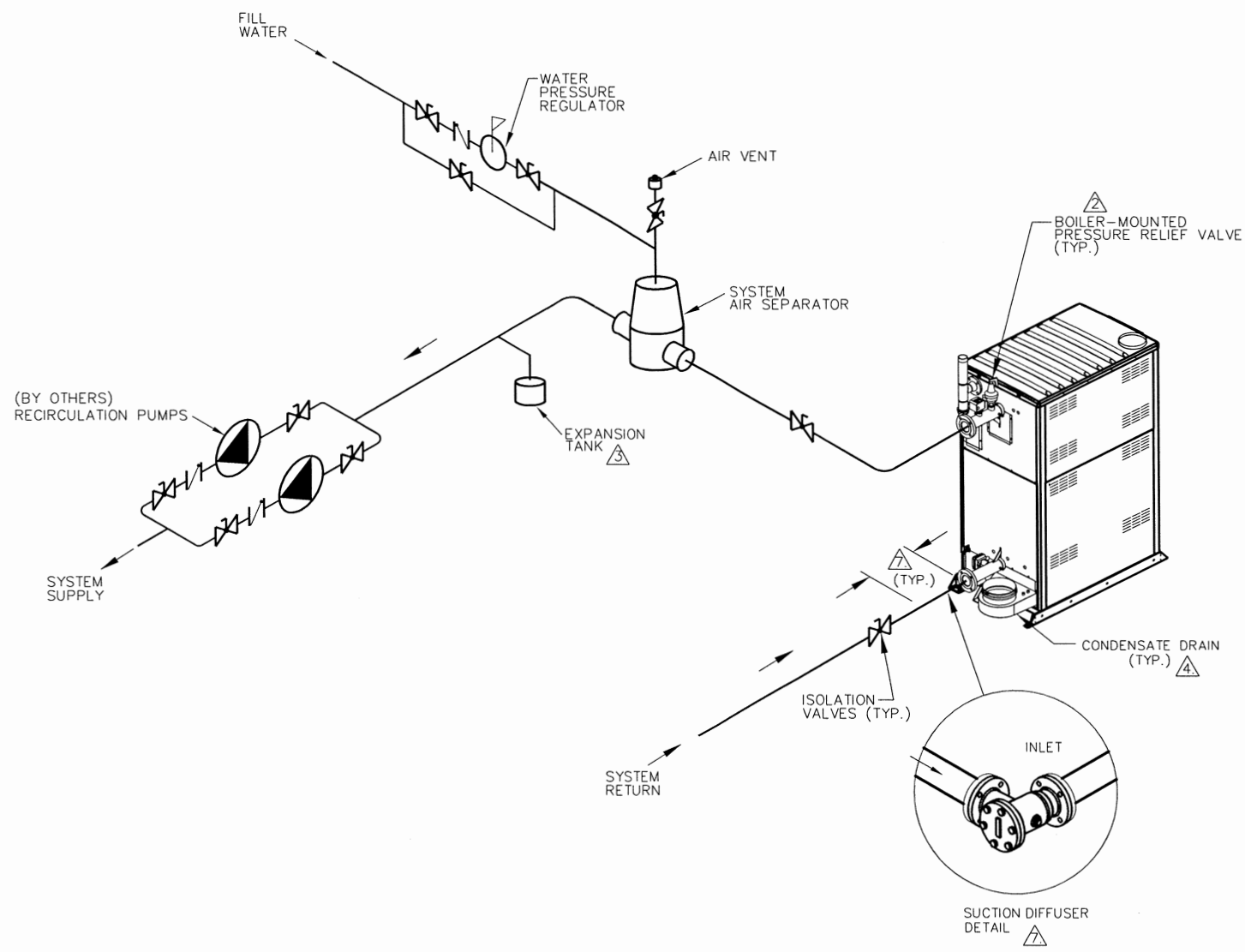


PIPE SIZES	
XVERS	UNIT
0856	3"
1006-3006	4"

REVISIONS						
REV	ZONE	DESCRIPTION	E.O.	BY	DATE	CHECK

THIS PIPING DIAGRAM IS RAYPAK'S RECOMMENDATION AND IS NOT INTENDED TO REPLACE AN ENGINEERED PIPING SYSTEM DESIGNED BY A PROFESSIONAL ENGINEER.



8881

KEY	
	BALANCING VALVE
	PRESSURE RELIEF VALVE
	PUMP
	UNION
	CHECK VALVE
	BALL VALVE
	THERMOMETER

NOTES:

1. PLUMB SWING CHECK VALVE IN GRAVITY-CLOSED POSITION.
2. PIPE ALL RELIEF VALVES TO DRAIN, OR AS LOCAL CODES REQUIRE.
3. PROVIDE FOR THERMAL EXPANSION OF HOT WATER IF A BACKFLOW PREVENTER, CHECK VALVE, WATER METER OR PRESSURE-REDUCING VALVE IS INSTALLED IN THE COLD WATER LINE.
4. CONDENSATE MUST BE PIPED TO AN APPROVED DRAIN. LOCAL CODE MAY REQUIRE PH TREATMENT PRIOR TO DRAIN.
5. SEE CHART "PIPE SIZES" FOR PIPE SIZES, CALCULATED AT MAXIMUM FLOW, NOT TO EXCEED 7.5 FT/SEC.
6. PIPING BRANCHES ARE TO BE EQUIDISTANT TO PROVIDE BALANCED FLOW.
7. MUST HAVE EITHER 20" MINIMUM OF STRAIGHT 3" PIPE OR A SUCTION DIFFUSER.

ACAD: 8881.DWG  
 BOILERS SHOWN REPRESENT VARIOUS MODELS. BECAUSE INDIVIDUAL MODELS WILL VARY IN DESIGN AND SIZING, SEE EACH SPECIFIC BOILER TYPE FOR DETAILS.

UNLESS OTHERWISE SPECIFIED: ALL UNITS ARE IN INCHES FRACTIONS ±1/32 ANGLES ±1° X = ±.12 X.X = ±.06 X.XX = ±.03 X.XXX = ±.010 DRAFT WALL RADII CONCENTRICITIES .020 DIA. SQUARENESS .015 IN./IN. BREAK EDGES .015 MAX. SURFACE FINISH PER ASME Y14.36M-1996	APPROVED  DATE 4/11/18	 OXNARD, CALIFORNIA
	CHECKED  DATE 4/9/18	DRAWN <b>J SIRON</b> DATE 2-12-18
TITLE <b>PIPING, HYDRONIC: 1 XVERS PRIMARY</b>		
MAT'L.	SERIES/MODEL H	SIZE DWG. NO. C 8881

RAYPAK PROPRIETARY AND CONFIDENTIAL INFORMATION  
 This drawing contains Confidential and Proprietary Information of Raypak, Inc. All rights reserved by Raypak, Inc.