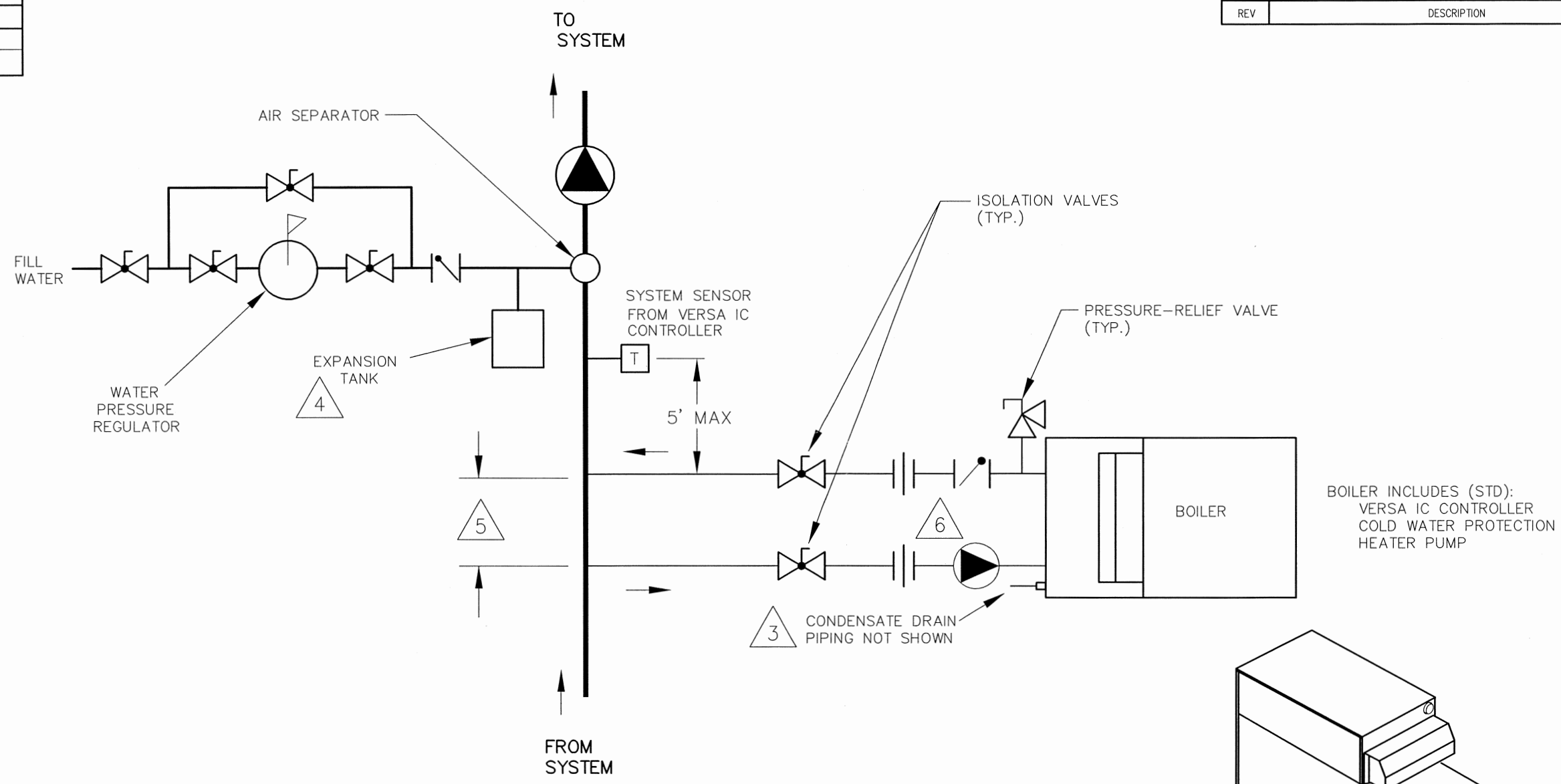


PIPE SIZES	
	UNIT
XTHERM	
2505-4005	4"

REVISIONS				
REV	DESCRIPTION	E.O.	BY	DATE



BOILER INCLUDES (STD):
 VERSA IC CONTROLLER
 COLD WATER PROTECTION
 HEATER PUMP

KEY	
	PRESSURE RELIEF VALVE
	PUMP
	UNION
	CHECK VALVE
	BALL VALVE
	THERMOMETER

NOTES:

- PIPE ALL RELIEF VALVES TO DRAIN, OR AS LOCAL CODES REQUIRE.
- PIPE SIZE MUST BE EQUAL TO THE BOILER INLET / OUTLET SIZE. SEE "PIPE SIZES" CHART ABOVE, SIZED AT MAX FLOW, NOT TO EXCEED 7.5 FT/SEC.

- CONDENSATE MUST BE PIPED TO AN APPROVED DRAIN. LOCAL CODE MAY REQUIRE NEUTRALIZATION PRIOR TO DRAIN.
- PROVIDE FOR THERMAL EXPANSION OF HOT WATER IF A BACKFLOW PREVENTER, CHECK VALVE, WATER METER OR PRESSURE-REDUCING VALVE IS INSTALLED IN THE COLD WATER LINE.
- DECOUPLER SPAN MUST NOT EXCEED 4 PIPE DIAMETERS OR 12", WHICHEVER IS LESS.
- INJECTOR PUMP PROVIDED WITH BOILER FOR FIELD INSTALLATION.

ACAD: 8583.DWG

BOILER SHOWN REPRESENTS VARIOUS MODELS. BECAUSE INDIVIDUAL MODELS WILL VARY IN DESIGN AND SIZING, SEE EACH SPECIFIC BOILER TYPE FOR DETAILS.

8583	UNLESS OTHERWISE SPECIFIED: ALL UNITS ARE IN INCHES FRACTIONS ±1/32 ANGLES ±1° X. = ±.12 X.X = ±.06 X.XX = ±.03 X.XXX = ±.010 DRAFT ____ WALL ____ RADII ____ CONCENTRICITIES .020 DIA. SQUARENESS .015 IN./IN. BREAK EDGES .015 MAX. SURFACE FINISH PER ASME Y14.36M-1996	APPROVED 	DATE 4/24/15	 OXNARD, CALIFORNIA	
	CHECKED 	DATE 4/24/15	E.O. SPR SCALE NONE		
		DRAWN K ANDREW	DATE 4-6-15	RAYPAK PROPRIETARY AND CONFIDENTIAL INFORMATION This drawing contains Confidential and Proprietary Information of Raypak, Inc. All rights reserved by Raypak, Inc.	
	TITLE PIPING, HYDRONIC: 1 BOILER, XTHERM				
MAT'L.	SERIES/MODEL H 2505-4005	SIZE B	DWG. NO. 8583	REV	