

PIPE SIZES

	UNIT	2 UNITS
RAYTHERM		
181-401	1-1/2"	2"
514-824	2"	3"
926-1826	2-1/2"	3"
2100-4001	3"	4"
MVB		
503-754	2"	3"
1003-2004	2-1/2"	4"
2503-4003	4"	6"
HI DELTA		
HD101-HD401	1-1/2"	2"
302-902	2"	3"
992-2342	2-1/2"	4"
DELTA LTD		
399-899	2"	3"
989-2339	2-1/2"	4"

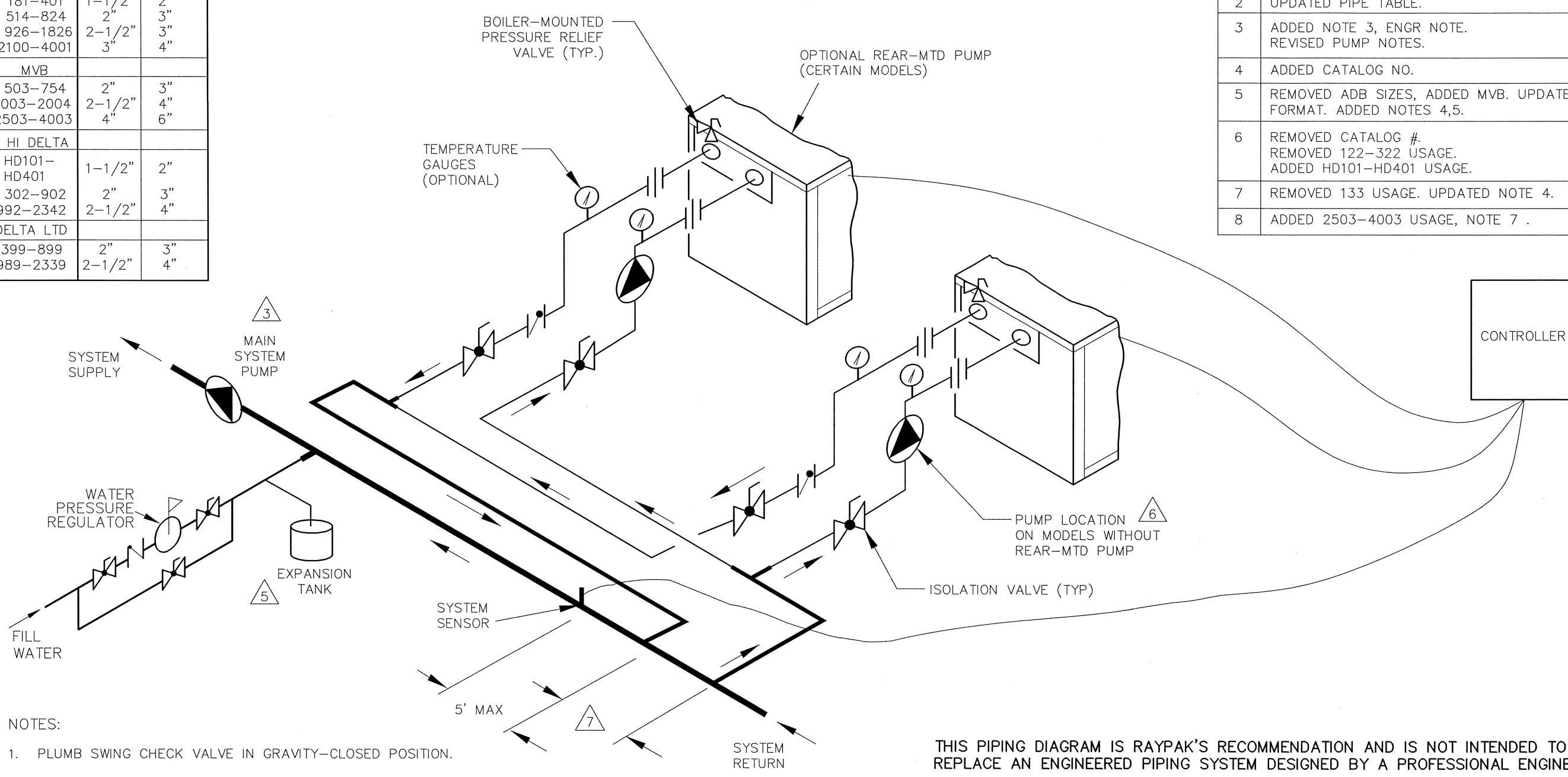
REVISIONS					
REV	DESCRIPTION	E.O.	BY	DATE	CHECK
1	REVISED EXPANSION TANK LOCATION		RDN	6-04-06	RDN
2	UPDATED PIPE TABLE.		RAN	8-28-06	DRB
3	ADDED NOTE 3, ENGR NOTE. REVISED PUMP NOTES.		DRB	3-16-07	DRB
4	ADDED CATALOG NO.		RAN	5-3-07	DRB
5	REMOVED ADB SIZES, ADDED MVB. UPDATED FORMAT. ADDED NOTES 4,5.		RAN	3-2-09	DRB
6	REMOVED CATALOG #. REMOVED 122-322 USAGE. ADDED HD101-HD401 USAGE.		KA	4-29-11	DRB
7	REMOVED 133 USAGE. UPDATED NOTE 4.		KA	2-24-14	DRB
8	ADDED 2503-4003 USAGE, NOTE 7.		KA	8-26-14	DRB

B

B

A

A



- NOTES:
1. PLUMB SWING CHECK VALVE IN GRAVITY-CLOSED POSITION.
 2. PIPE ALL RELIEF VALVES TO DRAIN, OR AS LOCAL CODES REQUIRE.
 3. WHEN USING VARIABLE-SPEED SYSTEM PUMPS, THE FLOW RATE MUST BE AT LEAST AS HIGH AS THE FLOW FROM ALL OPERATING BOILER PUMPS.
 4. SEE CHART "PIPE SIZES" FOR PIPE SIZES, CALCULATED AT MAXIMUM FLOW, NOT TO EXCEED 7.5 FT/SEC.
 5. PROVIDE FOR THERMAL EXPANSION OF HOT WATER OF A BACKFLOW PREVENTER, CHECK VALVE, WATER METER OR PRESSURE-REDUCING VALVE IS INSTALLED IN THE COLD WATER LINE.
 6. STANDARD PUMP SIZING BASED ON 75 EQUIVALENT FEET OF PIPING. IF DISTANCE IS GREATER, THE PUMP MUST BE SIZED TO ACCOMMODATE INCREASE IN PIPING-RELATED LOSSES.
 7. DECOUPLER SPAN MUST NOT EXCEED 4 PIPE DIAMETERS OR 12", WHICHEVER IS LESS.

THIS PIPING DIAGRAM IS RAYPAK'S RECOMMENDATION AND IS NOT INTENDED TO REPLACE AN ENGINEERED PIPING SYSTEM DESIGNED BY A PROFESSIONAL ENGINEER.

KEY	
	PRESSURE RELIEF VALVE
	PUMP
	UNION
	CHECK VALVE
	BALL VALVE
	THERMOMETER

ACAD: 8358.DWG
 BOILERS SHOWN REPRESENT VARIOUS MODELS. BECAUSE INDIVIDUAL MODELS WILL VARY IN DESIGN AND SIZING, SEE EACH SPECIFIC BOILER TYPE FOR DETAILS.

8358	UNLESS OTHERWISE SPECIFIED: ALL UNITS ARE IN INCHES FRACTIONS ±1/32 ANGLES ±1° X.X = ±.12 X.XX = ±.06 X.XX = ±.03 X.XXX = ±.010 DRAFT ___ WALL ___ RADII ___ CONCENTRICITIES .020 DIA. SQUARENESS .015 IN./IN. BREAK EDGES .015 MAX. SURFACE FINISH PER ASME Y14.36M-1996	APPROVED 	DATE 9/4/14		OXNARD, CALIFORNIA	
	CHECKED D BALDWIN	DATE 6-12-02	E.O.			SCALE
	DRAWN E ALVARADO	DATE 6-12-02	SPR	NONE	THIS DRAWING SUBMITTED UNDER CONFIDENTIAL RELATIONSHIP, AS IT EMBODIES PROPRIETARY INFORMATION, WITH ALL RIGHTS RESERVED BY RAYPAK, INC.	
	TITLE PIPING, HYDRONIC: 2 BOILERS		SIZE B			
∞	MAT'L.	SERIES/MODEL H	DWG. NO. 8358	REV 8		