

# RAYPAK ILLUSTRATED PARTS LIST

**MODEL SIZES: 183B, 263B, 333B, 403B**

**MODEL TYPES: H AND W**

DATES OF MANUFACTURE: 01-01-89 THROUGH 10-16-00

MODELS H4 BUILT FOR MODELS 183B AND 263B ONLY

MODEL W3 01-01-99 THRU 10-16-00

THE PARTS LISTED ARE FOR STANDARD EQUIPMENT FOR THIS MODEL TYPE. RAYPAK RESERVES THE RIGHT TO SUBSTITUTE, DELETE OR CHANGE ANY PART WITHOUT NOTIFICATION. THE ADDITION OF OPTIONS MAY ALSO CHANGE SOME OF THE PARTS. ORDER REPLACEMENT PARTS FROM ACTUAL HEATER COMPONENTS.



## MODEL TYPE DESIGNATIONS

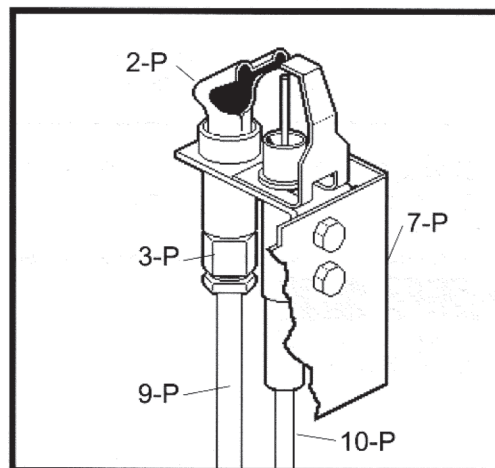
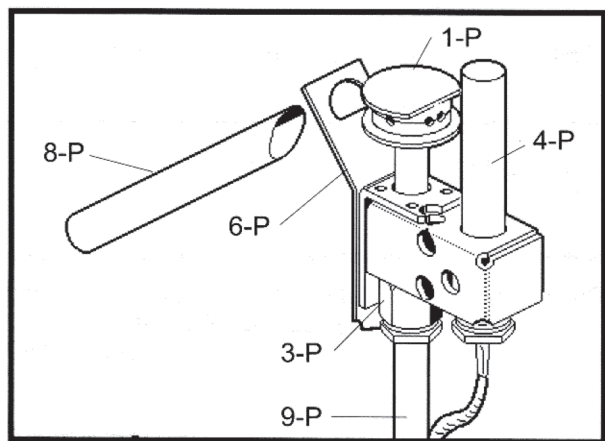
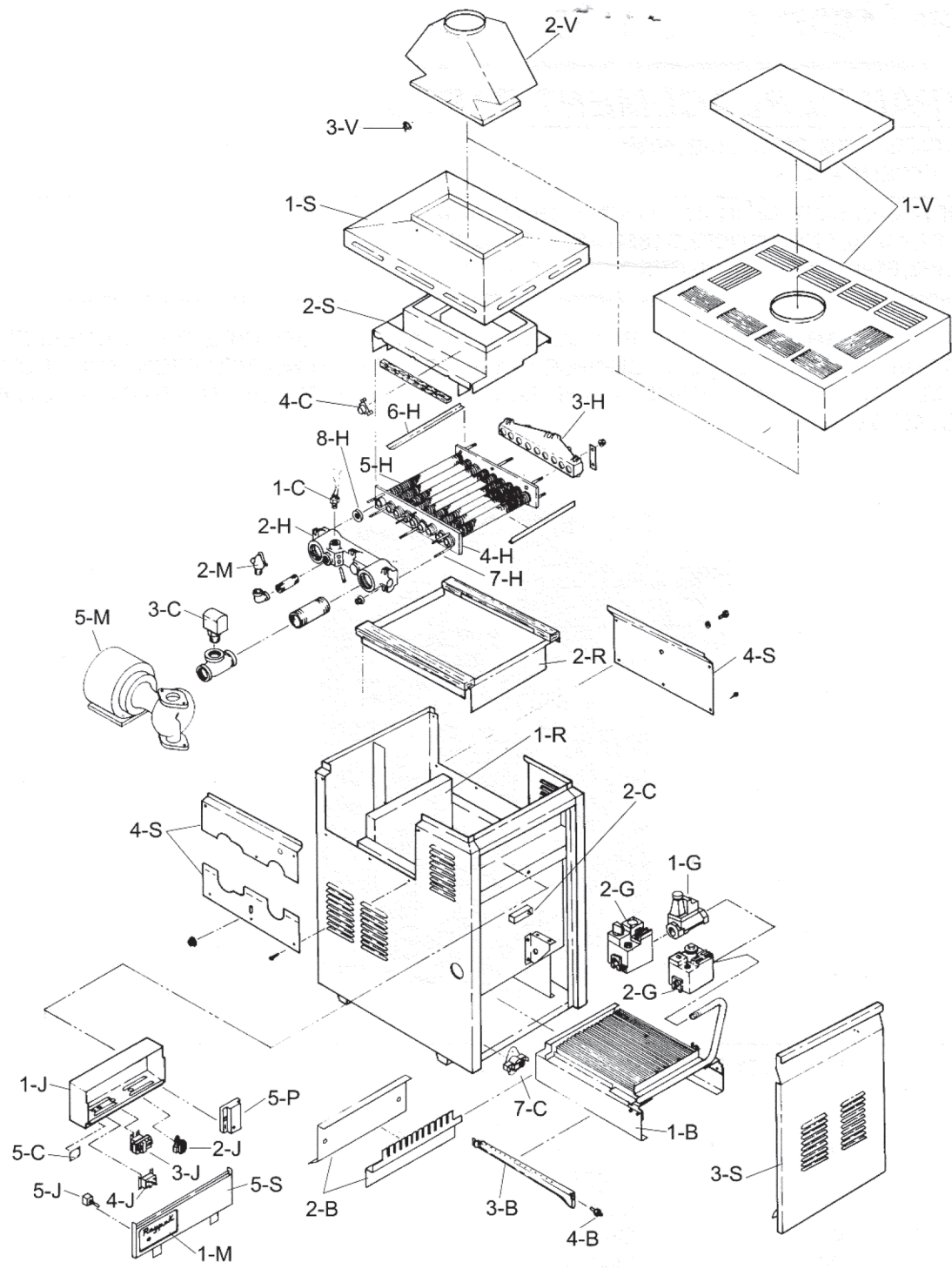
H1	Mechanical Modulating
H3	2-Stage
H4	On/Off
H5	Deicing
W1	On/Off
W2	Modulating
W3	2-Stage

FOR ADDITIONAL INFORMATION ON THE NEW MODEL TYPE DESIGNATIONS  
SEE SHEET 9001.10

FOR DETAILED INSTRUCTIONS, SEE "HOW TO USE YOUR RAYPAK ILLUSTRATED PARTS LIST",  
CATALOG NO. 9001.10



Raypak, Inc., 2151 Eastman Avenue, Oxnard, CA 93030  
(805) 278-5300 Fax (800) 872-9725  
Litho In U.S.A.



CALL OUT	DESCRIPTION	183B	263B	333B	403B
<b>B</b>	<b>BURNER TRAY****</b>				
1-B	Burner Tray w/Burners H3,H4,W1,W3 (Sea Level)*	004386F	004387F	004388F	004389F
	Burner Tray w/Burner H1,H5,W2 (Sea Level)*	004432F**	004387F	004388F	004389F
	Burner Tray w/o Burners H3,H4,W1,W3 (Sea Level)*	004390F	004391F	004392F	004393F
	Burner Tray w/o Burners H1,H5,W2 (Sea Level)*	004433F***	004391F	004392F	004393F
2-B	Burner Spacer/Hold Down Bracket Kit	004394F	004395F	004396F	004397F
3-B	Burner	301210/12	301210/17	301210/21	301210/26
4-B	Burner Orifice Nat. #50 (Sea Level)*	350079F/12	350079F/17	350079F/21	350079F/26
	Burner Orifice Pro. #57 (Sea Level)*	350083F/12	350083F/17	350083F/21	350083F/26
<b>C</b>	<b>CONTROLS</b>				
1-C	Auto Hi Limit Fixed	008554F	008554F	008554F	008554F
2-C	Manual Hi Limit (All Models)	007144F	007144F	007144F	007144F
	Auto Reset Dualstat	004092F	004092F	004092F	004092F
	Adj/Auto Hi Limit (H4)	007141F	007141F	007141F	007141F
	Controller 2 Stage (H3)	600887	600887	600887	600887
	Controller 2 Stage (W3)	006760F	006760F	006760F	006760F
	Controller 4 Stage (W3)	006759F	006759F	006759F	006759F
3-C	Flow Switch	007142F	007142F	007142F	007142F
4-C	Thermostat TTD Stack Sensor	003609F	003609F	003609F	003609F
5-C	Economaster II Control	004675F	004675F	004675F	004675F
6-C	Flow Switch Paddle				
	McDonnell Miller	004079F	004079F	004079F	004079F
	Taco	010026F	010026F	010026F	010026F
7-C	Flame Roll-Out Sensor	006035F	006035F		
8-C	Low Water Cut Off (Not Shown)	006202F	006202F	006202F	006202F
<b>G</b>	<b>GAS VALVES</b>	<b>SEE GAS VALVE REPLACEMENT CHART</b>			
<b>H</b>	<b>HEAT EXCHANGER</b>				
1-H	Heat Exchanger Assy Cast Iron	002032F	002033F	002034F	002035F
	Heat Exchanger Assy Brass	002036F	002037F	002038F	002039F
2-H	Inlet/Outlet Header Cast Iron	002040F	002040F	002040F	002040F
	Inlet/Outlet Header Brass	002041F	002041F	002041F	002041F
3-H	Return Header Cast Iron	002042F	002042F	002042F	002042F
	Return Header Brass	002043F	002043F	002043F	002043F
4-H	Tube Bundle	002044F	002045F	002046F	002047F
5-H	Heat Exchange Tube	002048F	002049F	002050F	002051F
6-H	Baffle Kit	001299F	001300F	001301F	001302F
7-H	Carriage Bolt Kit-(units before 03-2001)	N/A	N/A	N/A	N/A
	Stud Bolt Kit (units after 03-2001)	007870F	007870F	007870F	007870F
8-H	Header Gasket	800203B	800203B	800203B	800203B
9-H	Sensor Well	007211F	007211F	007211F	007211F
10-H	Well Retaining Clip	300203	300203	300203	300203
<b>J</b>	<b>J BOX/CONTROL BOX</b>				
1-J	Control Box STD	002052F	002052F	002052F	002052F
	Control Box STD (H3)	002053F	002053F	002053F	002053F
	Control Box IID Nat.	002055F	002055F	002055F	002055F
	Control Box IID Pro., Lock.	002058F	002058F	002058F	002058F
	Control Box IID/Lock (W3)	006652F	006652F	006652F	006652F
	J Box C2 Nat. (Not Shown)	N/A	N/A	N/A	N/A
2-J	Transformer 50VA	006533F	006533F	006533F	006533F
	Generator Spark C2	007361F	007361F	007361F	007361F
3-J	Relay DPST 24V	007376F	007376F	007376F	007376F
4-J	Relay DPST	008090F	008090F	008090F	008090F
	Relay SPDT C2 (Not Shown)	650117	650117	650117	650117
5-J	Toggle Switch	008079F	008079F	008079F	008079F

\*For Altitudes above 2,000 feet above sea level, consult factory or service outlet.

\*\*For use with boilers built with Honeywell gas mod. valve. Use 004386F for boilers built with Robertshaw gas mod valve.

\*\*\*For use with boilers built with Honeywell gas mod valve. Use 004390F for boilers built with Robertshaw gas mod valve.

\*\*\*\*Replacement burner trays are built for sea level, natural gas applications unless otherwise specified at the time the order is placed.

CALL OUT	DESCRIPTION	183B	263B	333B	403B
<b>M</b>	<b>MISCELLANEOUS</b>				
1-M	Switch Plate Std.	900842	900842	900842	900842
	Switch Plate IID	900844	900844	900844	900844
2-M	PRV 30 PSI (H5)	007217F	007217F	007217F	007217F
	PRV 45 PSI (H1, H3, H4)	007220F	007220F	007220F	007220F
	PRV 125 PSI (W1, W2, W3)	008091F	007224F	007224F	007224F
3-M	Delimiting Kit	052871F	052871F	052871F	052871F
4-M	T & P Gauge 0-90 PSI	007205F	007205F	007205F	007205F
	T & P Gauge 0-200 PSI	007399F	007399F	007399F	007399F
5-M	Pump CIBF	013426F	013426F	013426F	013426F
	Pump Brass	012912F	012912F	012912F	012912F
<b>P</b>	<b>PILOT</b>				
1-P	Pilot Nat. Standing	002001F	002001F	002001F	002001F
	Pilot Pro. Standing	002002F	002002F	002002F	002002F
2-P	Pilot Nat. IID	002003F	002003F	002003F	002003F
	Pilot Pro. IID	002003F	002003F	002003F	002003F
	Pilot C2 Nat.	002065F	002065F	002065F	002065F
3-P	Pilot Orifice Nat. Standing	600002	600002	600002	600002
	Pilot Orifice Pro. Standing	600422	600422	600422	600422
	Pilot Orifice Nat. IID	600811	600811	600811	600811
	Pilot Orifice Pro. IID	601218	601218	601218	601218
	Pilot Orifice Nat. C2	600552	600552	600552	600552
4-P	Thermocouple (Standing Pilot)	600003	600003	600003	600003
5-P	Ignition Control IID	004817B	004817B	004817B	004817B
	Ignition Control Lock. IID	004818B	004818B	004818B	004818B
	Ignition Control IID/Damper	005017F	005017F		
	Ignition Control Lock/Damper	004935F	004935F		
	Ignition Control C2 (Not Shown)	007359F	007359F	007359F	007359F
	Ignition Control C2 (Complete)	008702F	008702F	008702F	008702F
6-P	Pilot Mounting Bracket Std.	306693	306693	306693	306693
7-P	Pilot Mounting Bracket IID	306692	306692	306692	306692
	Pilot Mounting Bracket C2	306742	306742	306742	306742
8-P	Lighter Tube (Standing Pilot)	062996	062996	062996	062996
9-P	Pilot Tube	400607	400607	400607	400607
10-P	Hi Tension Wire	002654B	002654B	002654B	002654B
	Hi Tension Wire w/Pilot Electrode	N/A	N/A	N/A	N/A
11-P	Amplifier Flame Rectification C2 (Not Shown)	008092F	008092F	008092F	008092F
12-P	Base Ignition Control C2	008701F	008701F	008701F	008701F
<b>R</b>	<b>REFRACTORY</b>				
1-R	Refractory Kit	004428F	004429F	004430F	004431F
2-R	Refractory Retainer Kit	001304F	001305F	001306F	001307F
<b>S</b>	<b>SHEET METAL</b>				
1-S	Jacket Top	N/A	N/A	N/A	N/A
2-S	Flue Collector	N/A	N/A	N/A	N/A
3-S	Door Assy.	N/A	N/A	N/A	N/A
4-S	Access Panel Group	004402F	004402F	004402F	004402F
5-S	Control Panel Std.	004420F	004421F	004422F	004423F
	Control Panel IID	004424F	004425F	004426F	004427F
6-S	J Box Sheet Metal C2 (Not Shown)	002237F	002237F	002237F	002237F
7-S	Combustible Floor Shield (Not Shown)	001286	001287	001288	001289
8-S	Low Water Cut Off Control Cover (Not Shown)	016629F	016629F	016629F	016629F
<b>V</b>	<b>VENTING</b>				
1-V	Stackless Top Kit (Outdoor)	N/A	N/A	N/A	N/A
2-V	Draft Hood Kit (Indoor) w/o Flue Sensor	003724	003725	003726	003727
	Draffhood Kit (Indoor) w/Flue Sensor	004680	004681		
3-V	Flue Gas Spillage Sensor	006021F	006021F		
4-V	Vent Damper (Not Shown)	004712	004936		

GAS VALVES		PART NUMBER	H1				H3, W3				H5			
			183B	263B	333B	403B	183B	263B	333B	403B	183B	263B	333B	403B
<b>1-G</b>	<b>MODULATING GAS VALVES</b>													
	Valve - 1/2" 120 - 240 HW	N/A	1											
	Valve - 3/4" 120 - 240 HW	N/A		1	1									
	Valve - 1" 120 - 240 HW	N/A				1								
	Valve - 1" 140 Max HW	N/A											1	
	Valve - 1/2" 140 Max HW	N/A								1				
	Valve - 3/4" 140 Max HW	N/A									1	1		
	Valve 3/4 110-170 IID N RS	006504F								1	1	1		
	Valve 3/4 110-170 IID P RS	006506F								1	1	1		
	Valve 3/4 150-210 IID N RS	006505F	1	1	1									
	Valve 3/4 150-210 IID P RS	006507F	1	1	1									
	Valve 1" 110-170 IID N RS	006508F											1	
	Valve 1" 110-170 IID P RS	006510F											1	
	Valve 1" 150-210 IID N RS	006509F				1								
	Valve 1" 150-210 IID P RS	006511F				1								
	Solenoid Coil RS	013645F	1	1	1	1				1	1	1	1	
	Pilot Gas Valve 24V	600562	1	1	1	1				1	1	1	1	
	Pressure Reg Nat. 1/8	600217	1	1	1	1				1	1	1	1	
	Pressure Reg Pro 1/8	003568F	1	1	1	1				1	1	1	1	
<b>2-G</b>	<b>AUTOMATIC GAS VALVES (NAT)</b>													
	Valve - 24V 3/4"	004876F							1	1				
	Valve - 2 Stage 3/4"	004883F							1					
	Valve - Combination 2 Stage 3/4"	004883F					1	1						
	Valve - Combination 2 Stage 1"	004883F								1				
	Valve - Comb.Step 3/4" (IID Units)	003900F	1	1	1					1	1	1		
	Valve - Combination Step 1/2"	004868F	1							1				
	Valve - Combination Step 3/4"	004868F									1	1		
	Valve - Combination Step 3/4"	004868F		1	1									
	Valve - Combination Step 1"	N/A *				1							1	
	Valve - Comb.Step 1" (IID Units)	004877F				1							1	
	Valve - 2 Stage 3/4" (IID Units)	004879F					1	1	1					
	Valve - Comb 2 Stage 1" (IID Units)	004881F								1				
	Valve - Combination Step Pro 3/4"	004880F					1	1	1	1				

\*Consult Factory

GAS VALVES		PART NUMBER	H4				W2				W1			
			183B	263B	183B	263B	333B	403B	183B	263B	333B	403B		
<b>1-G</b>	<b>MODULATING GAS VALVES</b>													
	Valve - 1/2" 85 - 210 HW	N/A			1									
	Valve - 3/4" 85 - 210 HW	N/A				1	1							
	Valve - 1" 85 - 210 HW	N/A						1						
	Valve 3/4 110-170 IID N RS	006504F			1	1	1							
	Valve 3/4 110-170 IID P RS	006506F			1	1	1							
	Valve 1" 110-170 IID N RS	006508F						1						
	Valve 1" 110-170 IID P RS	006510F						1						
	Solenoid Coil RS	013645F	1	1	1	1	1							
	Pilot Gas Valve 24V	600562	1	1	1	1	1							
	Pressure Reg Nat. 1/8	600217	1	1	1	1	1							
	Pressure Reg Pro 1/8	003568F	1	1	1	1	1							
<b>2-G</b>	<b>AUTOMATIC GAS VALVES</b>													
	Valve - 24V 3/4"	004876F									1	1		
	Valve - Comb. Step 3/4" (IID NAT)	003900F	1	1	1	1	1		1	1	1	1		
	Valve - Comb. Step 3/4" (IID PRO)	004306F	1	1							1	1		
	Valve - Combination Step 3/4" NAT	004868F	1	1					1	1				
	Valve - Combination Step 3/4" NAT	004868F			1	1					1			
	Valve - Combination Step 1" NAT	N/A *											1	
	Valve - Comb.Step 1" (IID NAT)	004877F					1							
	Valve - Combination Step Pro 3/4"	006375F							1	1				

\*Consult Factory







Registered Quality Management System

[www.raypak.com](http://www.raypak.com)