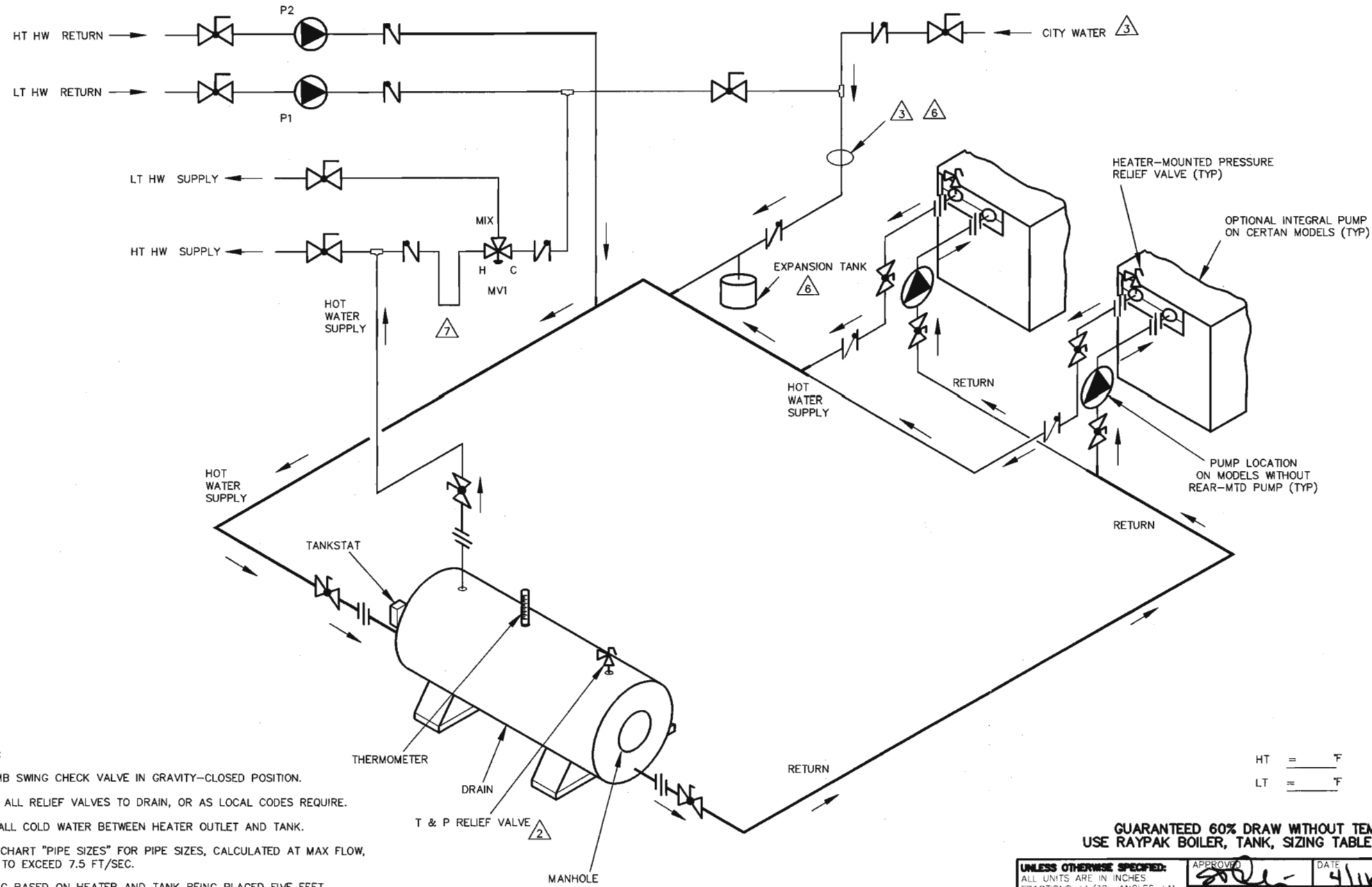


PIPE SIZES		
	UNIT	2 UNITS
RAYTHERM		
133	1-1/4"	1-1/2"
181-401	1-1/2"	2"
514-824	2"	3"
926-1826	2-1/2"	3"
2100-4001	3"	4"
MVB		
503-754	2"	3"
1003-2004	2-1/2"	4"
HI DELTA		
HD101- HD401	1-1/2"	2"
302-902	2"	3"
992-2342	2-1/2"	4"

THIS PIPING DIAGRAM IS RAYPAK'S RECOMMENDATION AND IS NOT INTENDED TO REPLACE AN ENGINEERED PIPING SYSTEM DESIGNED BY A PROFESSIONAL ENGINEER.

REVISIONS					
REV	ZONE	DESCRIPTION	E.O.	BY	DATE
1		UPDATED FORMAT, PIPING, TITLE, USAGE, NOTES 2,4,5, ADDED NOTE 8.		KA	11-19-12



8219 1

KEY	
	BALANCING VALVE
	PRESSURE RELIEF VALVE
	PUMP
	UNION
	CHECK VALVE
	BALL VALVE
	THERMOMETER

- NOTES:
1. PLUMB SWING CHECK VALVE IN GRAVITY-CLOSED POSITION.
 2. PIPE ALL RELIEF VALVES TO DRAIN, OR AS LOCAL CODES REQUIRE.
 3. INSTALL COLD WATER BETWEEN HEATER OUTLET AND TANK.
 4. SEE CHART "PIPE SIZES" FOR PIPE SIZES, CALCULATED AT MAX FLOW, NOT TO EXCEED 7.5 FT/SEC.
 5. SIZING BASED ON HEATER AND TANK BEING PLACED FIVE FEET APART, IF DISTANCE IS GREATER, THE PUMP MUST BE SIZED TO ACCOMMODATE INCREASE IN PIPING RELATED LOSSES.
 6. PROVIDE FOR THERMAL EXPANSION OF HOT WATER IF A BACKFLOW PREVENTER, CHECK VALVE, WATER METER OR PRESSURE-REDUCING VALVE IS INSTALLED IN THE COLD WATER LINE.
 7. 24-INCH HEAT SINK "U" REQUIRED PER RECOMMENDATIONS OF MANUFACTURER OR 3-WAY MIXING VALVE.
 8. IF HOT WATER SETPOINT EXCEEDS 160°F, SPECIFY "H" BOILERS INSTEAD OF "HW" WATER HEATERS.

GUARANTEED 60% DRAW WITHOUT TEMPERATURE DROP. USE RAYPAK BOILER, TANK, SIZING TABLE AND HOOK-UP DATA.

UNLESS OTHERWISE SPECIFIED: ALL UNITS ARE IN INCHES FRACTIONS ±1/32 ANGLES ±1° X.X = ±.12 X.XX = ±.06 X.XX = ±.03 X.XXX = ±.010 DRAFT WALL RADII CONCENTRICITIES .020 DIA. SQUARENESS .015 IN./IN. BREAK EDGES .015 MAX. SURFACE FINISH PER ASME Y14.36M-1996		APPROVED <i>[Signature]</i> DATE 4/16/13	DATE 9-23-99		ORLAND, CALIFORNIA
CHECKED D BALDWIN	DATE 9-23-99	DRAWN R NYLAND	DATE 9-23-99		E.O. SPR
RAYPAK PROPRIETARY AND CONFIDENTIAL INFORMATION This drawing contains Confidential and Proprietary information of Raypak, Inc. All rights reserved by Raypak, Inc.					
TITLE UNI-TEMP 60: 2 HEATERS 1 H TANK, 2 TEMPS					
MAT'L.	SERIES/MODEL WH	SIZE C	DWG. NO. 8219	REV 1	

ACAD: 8219.DWG
HEATERS SHOWN REPRESENT VARIOUS MODELS. BECAUSE INDIVIDUAL MODELS WILL VARY IN DESIGN AND SIZING, SEE EACH SPECIFIC HEATER TYPE FOR DETAILS.