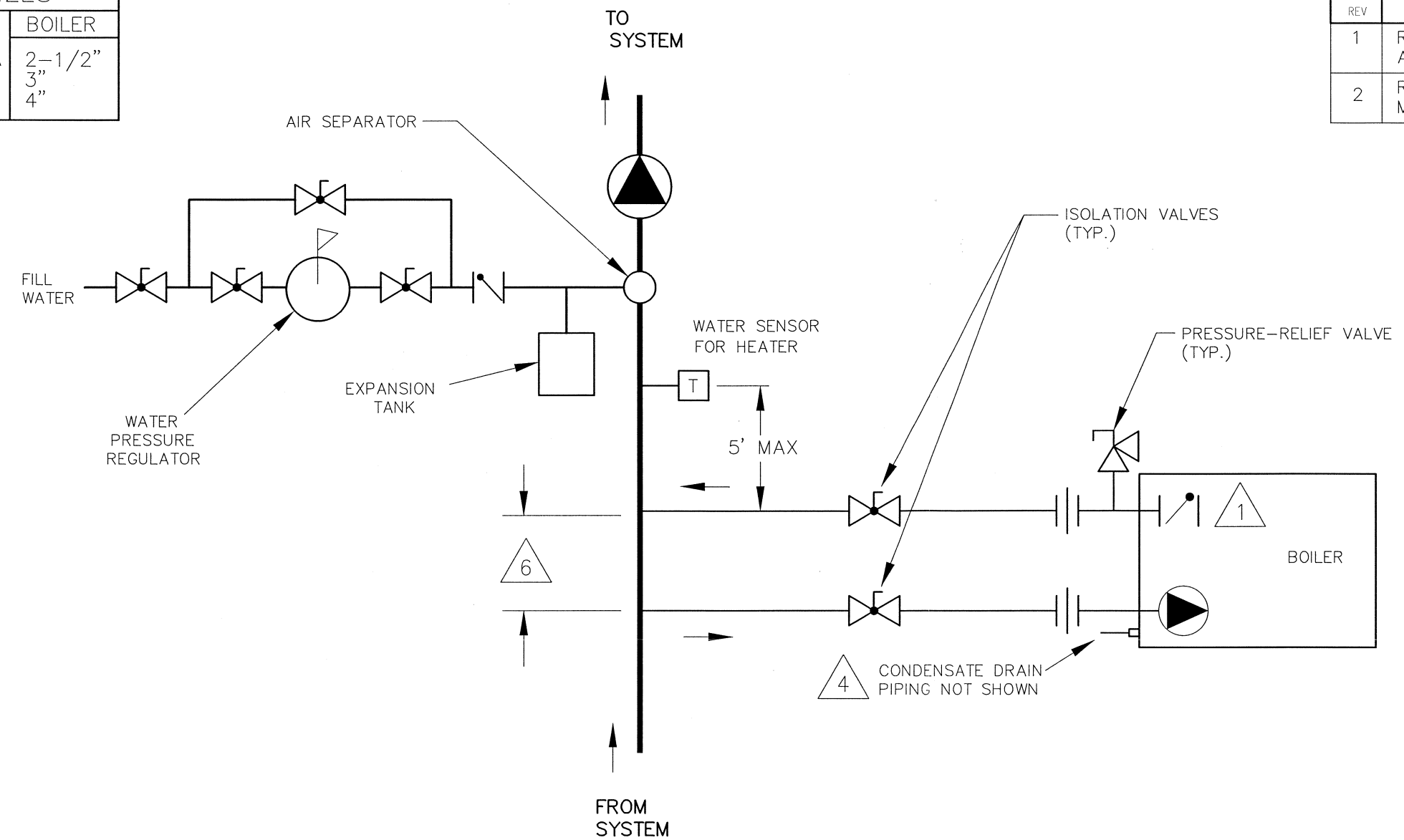


PIPE SIZES

	BOILER
1005A-2005A	2-1/2"
2505	3"
3005-4005	4"

REVISIONS					
REV	DESCRIPTION	E.O.	BY	DATE	CHECK
1	REVISED SYSTEM PIPING, NOTE 1. ADDED NOTE 5.		KA	4-20-11	DRB
2	REVISED NOTE 1. ADDED NOTE 6, MODELS 2505-4005.		KA	8-18-14	<i>[Signature]</i>



BOILER INCLUDES (STD):
 CONTROLLER
 CWR PROTECTION
 HEATER PUMP
 CHECK FUNCTION

KEY	
	PRESSURE RELIEF VALVE
	PUMP
	UNION
	CHECK VALVE
	BALL VALVE
	THERMOMETER

NOTES:

- 1 CHECK VALVE INTEGRAL TO XTHERM MODELS 1005A-2005A. MODELS 2505-4005 REQUIRE CHECK VALVE INSTALLED IN EXTERNAL PLUMBING BY OTHERS.
- 2. PIPE ALL RELIEF VALVES TO DRAIN, OR AS LOCAL CODES REQUIRE.
- 3. PIPE SIZE MUST BE EQUAL TO THE BOILER INLET / OUTLET SIZE. SEE "PIPE SIZES" CHART ABOVE.
- 4 CONDENSATE MUST BE PIPED TO AN APPROVED DRAIN. LOCAL CODE MAY REQUIRE NEUTRALIZATION PRIOR TO DRAIN.
- 5 PROVIDE FOR THERMAL EXPANSION OF HOT WATER IF A BACKFLOW PREVENTER, CHECK VALVE, WATER METER OR PRESSURE-REDUCING VALVE IS INSTALLED IN THE COLD WATER LINE.
- 6 DECOUPLER SPAN MUST NOT EXCEED 4 PIPE DIAMETERS OR 12", WHICHEVER IS LESS.

ACAD: 8651.DWG

BOILER SHOWN REPRESENTS VARIOUS MODELS. BECAUSE INDIVIDUAL MODELS WILL VARY IN DESIGN AND SIZING, SEE EACH SPECIFIC BOILER TYPE FOR DETAILS.

8651	UNLESS OTHERWISE SPECIFIED: ALL UNITS ARE IN INCHES FRACTIONS ±1/32 ANGLES ±1° X. = ±.12 X.X = ±.06 X.XX = ±.03 X.XXX = ±.010 DRAFT ___ WALL ___ RADII ___ CONCENTRICITIES .020 DIA. SQUARENESS .015 IN./IN. BREAK EDGES .015 MAX. SURFACE FINISH PER ASME Y14.36M-1996	APPROVED <i>[Signature]</i>	DATE 9/11/14		OXNARD, CALIFORNIA
	CHECKED D BALDWIN	DATE 1-7-09	E.O. SPR		
		DRAWN R NASH	DATE 11-25-08	RAYPAK PROPRIETARY AND CONFIDENTIAL INFORMATION This drawing contains Confidential and Proprietary Information of Raypak, Inc. All rights reserved by Raypak, Inc.	
TITLE PIPING, HYDRONIC: 1 BOILER, XTHERM					
2	MAT'L.	SERIES/MODEL H 1005-4005	SIZE B	DWG. NO. 8651	REV 2