

PIPE SIZES

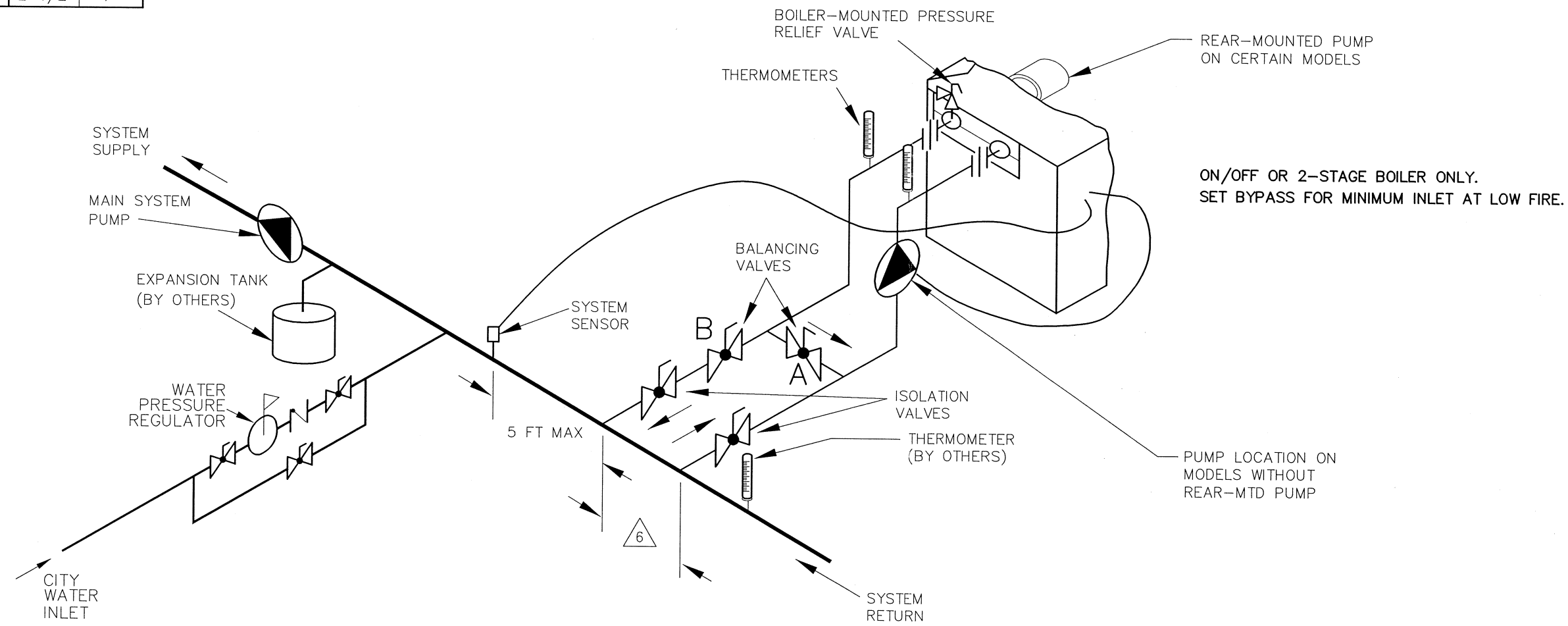
	UNIT	MAIN
RAYTHERM		
181-401	1-1/2"	2"
514-824	2"	3"
926-1826	2-1/2"	3"
2100-4001	3"	4"
MVB		
504-754	2"	3"
1104-2004	2-1/2"	4"
HI DELTA		
HD101- HD401	1-1/2"	2"
302-902	2"	3"
992-2342	2-1/2"	4"

THIS PIPING DIAGRAM IS RAYPAK'S RECOMMENDATION AND IS NOT INTENDED TO REPLACE AN ENGINEERED PIPING SYSTEM DESIGNED BY A PROFESSIONAL ENGINEER.

REVISIONS					
REV	DESCRIPTION	E.O.	BY	DATE	CHECK
1	ADDED REAR PUMP OPTION		RLH	8-11-00	DRB
2	ADDED PIPE SIZE CHART. UPDATED USAGE.		RAN	1-19-07	DRB
3	ADDED CATEGORY I MVB. UPDATED FORMAT.		RAN	6-24-08	DRB
4	UPDATED USAGE, TITLE, ADDED NOTES 4 & 5.		KA	2-25-14	DRB
5	UPDATED TITLE, REMOVED AIR SEPERATOR, ADDED NOTE 6.		KA	6-12-14	AKB

B

B



KEY	
	PRESSURE RELIEF VALVE
	PUMP
	UNION
	CHECK VALVE
	BALL VALVE
	THERMOMETER

A

A

- NOTES:
1. PLUMB SWING CHECK VALVE IN GRAVITY-CLOSED POSITION.
  2. PIPE ALL RELIEF VALVES TO DRAIN, OR AS LOCAL CODES REQUIRE.
  3. PROVIDE FOR THERMAL EXPANSION OF HOT WATER IF A BACKFLOW PREVENTER, CHECK VALVE, WATER METER OR PRESSURE-REDUCING VALVE IS INSTALLED IN THE COLD WATER LINE.
  4. SEE CHART "PIPE SIZES" FOR PIPE SIZES, CALCULATED AT MAXIMUM FLOW, NOT TO EXCEED 7.5 FT/SEC.
  5. STANDARD PUMP SIZING BASED ON 75 EQUIVALENT FEET OF PIPING. IF DISTANCE IS GREATER, THE PUMP MUST BE SIZED TO ACCOMMODATE INCREASE IN PIPING-RELATED LOSSES.
- DECOUPLER SPAN MUST NOT EXCEED 4 PIPE DIAMETERS OR 12", WHICHEVER IS LESS.

ACAD: 8192.DWG

BOILER SHOWN REPRESENTS VARIOUS MODELS. BECAUSE INDIVIDUAL MODELS WILL VARY IN DESIGN AND SIZING, SEE EACH SPECIFIC BOILER TYPE FOR DETAILS.

8192	UNLESS OTHERWISE SPECIFIED: ALL UNITS ARE IN INCHES FRACTIONS ±1/32 ANGLES ±1° X. = ±.12 X.X = ±.06 X.XX = ±.03 X.XXX = ±.010 DRAFT ___ WALL ___ RADII ___ CONCENTRICITIES .020 DIA. SQUARENESS .015 IN./IN. BREAK EDGES .015 MAX. SURFACE FINISH PER ASME Y14.36M-1996	APPROVED 	DATE 9/8/14		OXNARD, CALIFORNIA
	CHECKED G HAHN	DATE 5-7-99	E.O. SPR		
	DRAWN G HAHN	DATE 5-7-99	THIS DRAWING SUBMITTED UNDER CONFIDENTIAL RELATIONSHIP, AS IT EMBODIES PROPRIETARY INFORMATION, WITH ALL RIGHTS RESERVED BY RAYPAK, INC.		
	TITLE PIPING, HYDRONIC HEAT PUMP: 1 BOILER		SIZE B		
5	MAT'L.	SERIES/MODEL H	DWG. NO. 8192	REV 5	