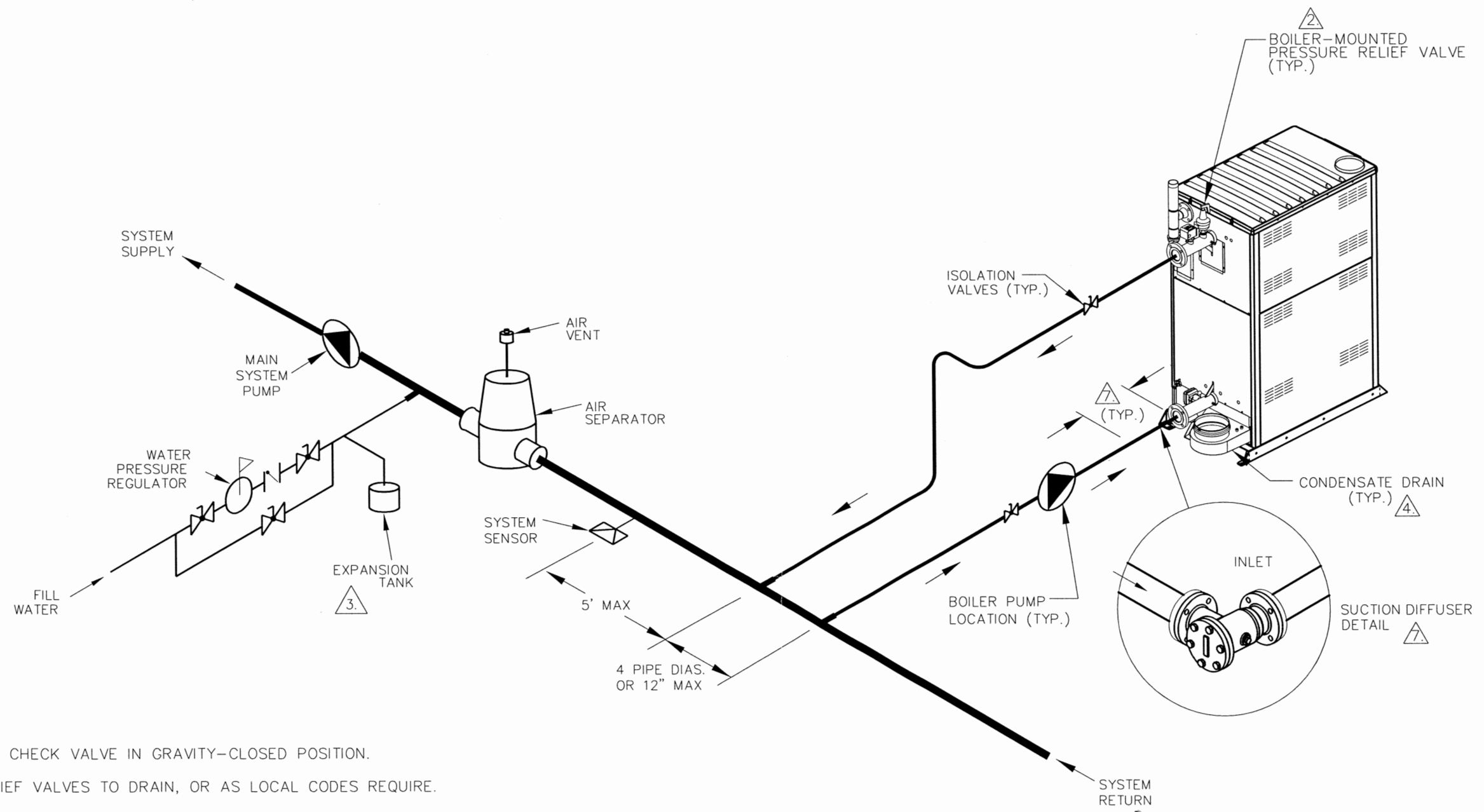


PIPE SIZES	
XVERS	UNIT
0856	3"
1006-3006	4"

THIS PIPING DIAGRAM IS RAYPAK'S RECOMMENDATION AND IS NOT INTENDED TO REPLACE AN ENGINEERED PIPING SYSTEM DESIGNED BY A PROFESSIONAL ENGINEER.

REVISIONS				
REV	DESCRIPTION	E.O.	BY	DATE

8877 0



NOTES:

1. PLUMB SWING CHECK VALVE IN GRAVITY-CLOSED POSITION.
2. PIPE ALL RELIEF VALVES TO DRAIN, OR AS LOCAL CODES REQUIRE.
3. PROVIDE FOR THERMAL EXPANSION OF HOT WATER IF A BACKFLOW PREVENTER, CHECK VALVE, WATER METER OR PRESSURE-REDUCING VALVE IS INSTALLED IN THE COLD WATER LINE.
4. CONDENSATE MUST BE PIPED TO AN APPROVED DRAIN. LOCAL CODE MAY REQUIRE PH TREATMENT PRIOR TO DRAIN.
5. SEE CHART "PIPE SIZES" FOR PIPE SIZES, CALCULATED AT MAXIMUM FLOW, NOT TO EXCEED 7.5 FT/SEC.
6. PIPING BRANCHES ARE TO BE EQUIDISTANT TO PROVIDE BALANCED FLOW.
7. MUST HAVE EITHER 20" MINIMUM OF STRAIGHT 3" PIPE OR A SUCTION DIFFUSER.

ACAD: 8877. DWG
 BOILER SHOWN REPRESENTS VARIOUS MODELS. BECAUSE INDIVIDUAL MODELS WILL VARY IN DESIGN AND SIZING, SEE EACH SPECIFIC BOILER TYPE FOR DETAILS.

UNLESS OTHERWISE SPECIFIED: ALL UNITS ARE IN INCHES FRACTIONS ±1/32 ANGLES ±1° X. = ±.12 X.X = ±.06 X.XX = ±.03 X.XXX = ±.010 DRAFT ___ WALL ___ RADII ___ CONCENTRICITIES .020 DIA. SQUARENESS .015 IN./IN. BREAK EDGES .015 MAX. SURFACE FINISH PER ASME Y14.36M-1996	APPROVED <i>[Signature]</i>	DATE 3/19/18		
	CHECKED <i>[Signature]</i>	DATE 3/14/18		OXNARD, CALIFORNIA
	DRAWN J SIRON	DATE 2-9-18	E.O. SPR	SCALE NONE
		SIZE B	THIS DRAWING SUBMITTED UNDER CONFIDENTIAL RELATIONSHIP, AS IT EMBODIES PROPRIETARY INFORMATION, WITH ALL RIGHTS RESERVED BY RAYPAK, INC.	
TITLE PIPING, HYDRONIC: 1 XVERS PRI/SEC				
MAT'L.	SERIES/MODEL H	DWG. NO. 8877	REV 0	

B

B

A

A