

**WATER HEATER HEAT RECOVERY UNIT (DESUPERHEATER)**

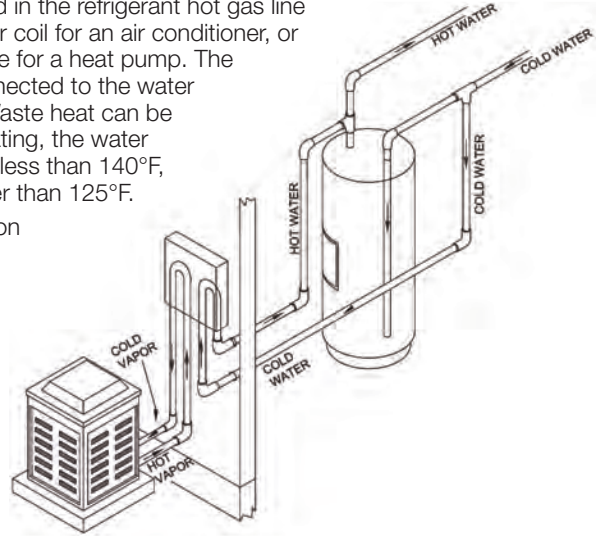


The AQUEFIER Heat Recovery Unit captures waste heat discharged from the refrigerant cycle in an air conditioning or heat pump system, and transfers that heat into a water heater tank creating hot water for domestic use. Not only does it substantially reduce the amount of energy required to provide domestic hot water, but it also improves the cooling efficiency of the air conditioner or heat pump while it is operating.



The refrigerant side of the unit is installed in the refrigerant hot gas line between the compressor and condenser coil for an air conditioner, or between compressor and reversing valve for a heat pump. The water side of the heat exchanger is connected to the water heater tank to form a circulation loop. Waste heat can be collected when the compressor is operating, the water circulating from the water heater tank is less than 140°F, and the refrigerant temperature is greater than 125°F.

- 230V power supply for easy connection to compressor contactor
- Designed to operate with systems of 1-1/2 to 5 ton capacity
- Fully automatic operation
- High-efficiency all copper vented double-wall heat exchanger
- Water lubricated low wattage circulator pump
- Aluminum enclosure with baked enamel finish; suitable for indoor or outdoor use



PART NO	REFRIGERANT COMPATIBILITY	SYSTEM SIZE (TONS)	INPUT VOLTAGE (V)	INPUT CURRENT (A)	MAX REFRIG PRESSURE (PSIG)	MAX WATER PRESSURE (PSIG)	MAX WATER TEMP (°F)	SIZE W X H X D (IN)
96612	HFC - R-410A, HCFC - R-22	1-1/2 to 5	230	0.40	650	125	220	11 x 18 x 5-5/8

**Accessories**

**Freeze-Stat**



Designed to operate when water temperatures of 40°F or less are detected in order to provide water circulation independent of compressor operation.



PART NO	DESCRIPTION
50313	Freeze Stat (L50)

**Pinellas County Installation Kit**



Includes two hand shut-off valves and a pressure relief assembly. Required by code in Pinellas County Florida.



PART NO	DESCRIPTION
96668	Pinellas County Kit (PC Kit)

**CONDENSATE PUMPS**



**Condensate Pumps – Beckett CB Series**



Designed to be user-friendly with features such as a highly reliable micro switch float mechanism and the ability to mount from either side. High-impact ABS construction. Includes a replaceable duck-bill check valve design and convenient discharge with both barb and threads. Three top inlets provided.

PART NO	VENDOR PART NO	INPUT VOLTAGE (V)	SAFETY SWITCH	TUBING	TANK CAPACITY (GAL)	OVERALL DIMENSIONS L X W X H (IN)	SHUT-OFF HEAD (FT)	FLOW RATE @ 15 FT HEAD (GPH)	FLOW RATE @ 10 FT HEAD (GPH)	FLOW RATE @ 5 FT HEAD (GPH)
1PCB151TUL	CB151TUL	120	Yes	3/8 in. I.D. (20 ft.)	0.50	11-1/4 x 5 x 6-1/2	15	—	39	85
1PCB201TUL	CB201TUL	120	Yes	3/8 in. I.D. (20 ft.)	0.50	11-1/4 x 5 x 6-1/2	20	36	73	105



**Condensate Pumps – Hartell KT-3 Series**



Uses a double splash protected motor with more starting torque than a standard motor. An innovated cam-action switch/float assembly allows a “drink” nearly twice a typical volume without increasing pump dimensions. High-impact ABS construction. An integral full-flow check valve virtually eliminates blocked pump discharge. Three top inlets provided for installation flexibility.

PART NO	VENDOR PART NO	INPUT VOLTAGE (V)	SAFETY SWITCH	TUBING	TANK CAPACITY (GAL)	OVERALL DIMENSIONS L X W X H (IN)	SHUT-OFF HEAD (FT)	FLOW RATE @ 18 FT HEAD (GPH)	FLOW RATE @ 12 FT HEAD (GPH)	FLOW RATE @ 6 FT HEAD (GPH)
84-KT3-1UL	KT3-1UL	120	No	Not included	0.75	9-1/4 x 5-1/2 x 8-1/4	18-1/2	50	120	155
84-KT3X-1ULT	KT3X-1ULT	120	Yes	3/8 in. I.D. (20 ft.)	0.75	9-1/4 x 5-1/2 x 8-1/4	18-1/2	50	120	155
84-KT3X-1UL	KT3X-1UL	120	Yes	Not included	0.75	9-1/4 x 5-1/2 x 8-1/4	18-1/2	50	120	155
84-KT3X-2ULT	KT3X-2ULT	230	Yes	3/8 in. I.D. (20 ft.)	0.75	9-1/4 x 5-1/2 x 8-1/4	18-1/2	50	120	155
84-KT3X-2UL	KT3X-2UL	230	Yes	Not included	0.75	9-1/4 x 5-1/2 x 8-1/4	18-1/2	50	120	155



**Condensate Pumps – Hartell KT-15 Series**



Designed to provide years of trouble-free service. An integral full-flow check valve virtually eliminates blocked pump discharge. Two top inlets provided.

PART NO	VENDOR PART NO	INPUT VOLTAGE (V)	SAFETY SWITCH	TUBING	TANK CAPACITY (GAL)	OVERALL DIMENSIONS L X W X H (IN)	SHUT-OFF HEAD (FT)	FLOW RATE @ 18 FT HEAD (GPH)	FLOW RATE @ 12 FT HEAD (GPH)	FLOW RATE @ 6 FT HEAD (GPH)
84-KT-15-1UL	KT-15-1UL	120	No	Not included	0.75	9-1/4 x 5-1/2 x 8-1/4	15	—	68	118
84-KT-15X-1ULT	KT-15X-1ULT	120	Yes	3/8 in. I.D. (20 ft.)	0.75	9-1/4 x 5-1/2 x 8-1/4	15	—	68	118
84-KT-15X-1UL	KT-15X-1UL	120	Yes	Not included	0.75	9-1/4 x 5-1/2 x 8-1/4	15	—	68	118



**Condensate Pumps – Little Giant VCMA Series**



A vertical type pump with stainless steel motor shaft, rust proof, high-impact ABS volute, tank and motor cover, removable 3/8 in. O.D. barbed check valve. Three top inlets provided.

PART NO	VENDOR PART NO	INPUT VOLTAGE (V)	SAFETY SWITCH	TUBING	TANK CAPACITY (GAL)	OVERALL DIMENSIONS L X W X H (IN)	SHUT-OFF HEAD (FT)	FLOW RATE @ 10 FT HEAD (GPH)	FLOW RATE @ 5 FT HEAD (GPH)	FLOW RATE @ 1 FT HEAD (GPH)
84-VCMA-15UL	554401	120	No	Not included	0.50	11 x 5 x 7-1/32	15	25	50	65
84-VCMA-15ULST	554415	120	Yes	3/8 in. I.D. (20 ft.)	0.50	11 x 5 x 7-1/32	15	25	50	65
84-VCMA-15ULS	554405	120	Yes	Not included	0.50	10-5/16 x 5 x 7-1/32	15	25	50	65
84-VCMA-20UL	554421	120	No	Not included	0.50	11 x 5 x 7-1/32	20	48	70	80
84-VCMA-20ULS	554425	120	Yes	Not included	0.50	11 x 5 x 7-1/32	20	48	70	80
84-VCMA-20UL-230	554451	230	No	Not included	0.50	11 x 5 x 7-1/32	17	48	70	80
84-VCMA-20ULST-230	554461	230	Yes	3/8 in. I.D. (20 ft.)	0.50	11 x 5 x 7-1/32	17	48	70	80
84-VCMA-20ULS-230	554455	230	Yes	Not included	0.50	11 x 5 x 7-1/32	17	48	70	80

## CONDENSATE PUMPS



### Condensate Pumps – Little Giant VCC Series



A low profile compact size for applications with limited space. Pumps feature a stainless steel motor shaft, rust proof, high-impact ABS volute, tank and motor cover. Discharge is a 3/8 in. O.D. barbed tubing adapter/check valve. Two top inlets provided.

PART NO	VENDOR PART NO	INPUT VOLTAGE (V)	SAFETY SWITCH	TUBING	TANK CAPACITY (GAL)	OVERALL DIMENSIONS L X W X H (IN)	SHUT-OFF HEAD (FT)	FLOW RATE @ 10 FT HEAD (GPH)	FLOW RATE @ 5 FT HEAD (GPH)	FLOW RATE @ 1 FT HEAD (GPH)
84-VCC-20ULS	554200	120	Yes	Not included	0.30	12 x 5 x 5	20	45	70	80
84-VCC-20ULS-230	554210	230	Yes	Not included	0.30	12 x 5 x 5	17	45	70	80



### Condensate Pumps – Little Giant VCL Series



Features a stainless steel motor shaft, ABS tank, and galvanized steel tank cover. Discharge is a 1/4 in. NPT or 3/8 in. O.D. barbed tubing adapter. Two top inlets provided.

PART NO	VENDOR PART NO	INPUT VOLTAGE (V)	SAFETY SWITCH	TUBING	TANK CAPACITY (GAL)	OVERALL DIMENSIONS L X W X H (IN)	SHUT-OFF HEAD (FT)	FLOW RATE @ 9 FT HEAD (GPH)	FLOW RATE @ 5 FT HEAD (GPH)	FLOW RATE @ 1 FT HEAD (GPH)
84-VCL-24ULS	553201	120	Yes	Not included	1	12-7/64 x 6 x 10-3/8	24	210	250	270



### Condensate Pumps – Sauermann



High flow rate, high discharge head pumps with integral check valve. Two top inlets, and hose adapter provided.

PART NO	VENDOR PART NO	INPUT VOLTAGE (V)	SAFETY SWITCH	TUBING	TANK CAPACITY (GAL)	OVERALL DIMENSIONS L X W X H (IN)	SHUT-OFF HEAD (FT)	FLOW RATE @ 16 FT HEAD (GPH)	FLOW RATE @ 6.6 FT HEAD (GPH)	FLOW RATE @ 0 FT HEAD (GPH)
SI1805SIUS11	SI1805SIUS11	120	Yes	Not included	0.13	7-3/4 x 5 x 4-3/4	20	23	103	132
SI1820SIUS11	SI1820SIUS11	120	Yes	Not included	0.53	7-3/4 x 5 x 6-3/4	20	23	103	132

## MINI-SPLIT CONDENSATE PUMPS



### Mini-Split Condensate Pumps – Aspen Mini Lime



- Fits most mini-splits up to 60,000 BTU/HR
- ASP-ML115 fits Aspen Slimline 2 in. profile; ASP-MLS115 fits SlimDuct SD-77 and Line-Hide CD-75
- For left or right hand installation
- Fully potted for noise and water resistance
- Self-leveling, self-priming pump
- Automatically operates on water rise
- Ivory color fits any décor
- Kit contents:
  - Pump/cable assembly
  - Elbow
  - 31 in. lineset cover
  - Ceiling plate, evaporator flashing
  - Inlet and outlet tubing
  - Wallplugs and screws

PART NO	VENDOR PART NO	INPUT VOLTAGE (V)	SAFETY SWITCH	OVERALL DIMENSIONS L X W X H (IN)	SHUT-OFF HEAD (FT)	FLOW RATE @ 26 FT HEAD (GPH)	FLOW RATE @ 0 FT HEAD (GPH)
ASP-ML115	ASP-ML115	120	Yes	3-1/2 x 4 x 1-3/4	26	0.8	3.7
ASP-MLS115	ASP-MLS115	120	Yes	3-1/2 x 4 x 1-3/4	26	0.8	3.7

**MINI-SPLIT CONDENSATE PUMPS**



**Mini-Split Condensate Pumps – Aspen Mini Orange**



- Fits most mini-splits up to 60,000 BTU/HR
- Installs inside evaporator, remotely above ceiling, or inside lineset cover
- Two reservoir option supplied
- Self-priming pump
- Automatically operates on water rise
- Quiet operation
- Kit contents:
  - Pump unit
  - Assembled inline reservoir complete with lid and sensor cable, float and filter
  - Submersible (pan mounted) reservoir
  - Orange rubber connector tube
  - Vinyl breather tube (6 ft.)
  - Vinyl discharge tube (5 ft.)
  - Orange power cable (6 ft.)
  - Two self-adhesive hook & loop mounting strips
  - Four cable ties

PART NO	VENDOR PART NO	INPUT VOLTAGE (V)	SAFETY SWITCH	PUMP DIMENSIONS L X W X H (IN)	SHUT-OFF HEAD (FT)	MAXIMUM SUCTION HEAD (FT)	FLOW RATE @ 26 FT HEAD (GPH)	FLOW RATE @ 0 FT HEAD (GPH)
ASP-MO115	ASP-MO115	120	Yes	4-3/4 x 1-3/8 x 2	26	4	0.8	3.7



**Mini-Split Condensate Pumps – Little Giant EC Series**



- Fits most mini-splits up to 25,000 BTU/HR
- Compact two-piece design allows flexible installation
- Quiet operation
- Self-priming pump
- Kit contents:
  - Pump unit
  - Suction tubing (3 ft.)
  - Vent tubing (8 in.)
  - Drain tubing (3 in.)
  - Tubing adapter

PART NO	VENDOR PART NO	INPUT VOLTAGE (V)	SAFETY SWITCH	PUMP DIMENSIONS L X W X H (IN)	SHUT-OFF HEAD (FT)	MAXIMUM SUCTION HEAD (FT)	FLOW RATE @ 20 FT HEAD (GPH)	FLOW RATE @ 1 FT HEAD (GPH)
84-EC-400-115	553455	120	Yes	1-3/8 x 1-3/4 x 4-3/8	35	3	0.6	2.5
84-EC-400-230	553458	230	Yes	1-3/8 x 1-3/4 x 4-3/8	35	3	0.6	2.5



**Mini-Split Condensate Pumps – Sauermann**



- Designed for mini-splits with limited internal space
- Consists of pump unit and remote detection unit fitted with three level float (on/off/alarm)
- Low maintenance filter-free detection unit
- Quiet operation
- Kit contents:
  - Pump unit
  - Detection unit with float
  - Rubber mounting bracket
  - Power cable
  - Detector installation kit with tubing

PART NO	VENDOR PART NO	INPUT VOLTAGE (V)	SAFETY SWITCH	PUMP DIMENSIONS L X W X H (IN)	SHUT-OFF HEAD (FT)	MAXIMUM SUCTION HEAD (FT)	FLOW RATE @ 16 FT HEAD (GPH)	FLOW RATE @ 3.3 FT HEAD (GPH)
SI3100SIUS11	SI3100SIUS11	120	Yes	2-5/8 x 1-3/4 x 2-1/2	20	6.6	0.85	2.51
SI3200SIUS11	SI3200SIUS11	120	Yes	2-5/8 x 1-3/4 x 2-1/2	20	6.6	3.04	5.02
SI3100SIUS23	SI3100SIUS23	230	Yes	2-5/8 x 1-3/4 x 2-1/2	20	6.6	0.85	2.51
SI3200SIUS23	SI3200SIUS23	230	Yes	2-5/8 x 1-3/4 x 2-1/2	20	6.6	3.04	5.02

**CONDENSATE OVERFLOW SAFETY SWITCHES**



**84-ACS-2-18 & 84-ACS-2-72 Condensate Overflow Safety Switches – Pan Mount**



- Mounts to the side of condensate drain pans
- Detects high condensate levels in drain pans and shuts-off the system
- The switch can be wired to operate as normally open or normally closed

PART NO	DESCRIPTION
84-ACS-2-18	Condensate Overflow Safety Switch - Pan Mount (18 in. leads)
84-ACS-2-72	Condensate Overflow Safety Switch - Pan Mount (72 in. leads)



**84-J-100 Condensate Overflow Safety Switch – Pan Mount**



- Mounts to the side of condensate drain pans
- Detects high condensate levels in drain pans and shuts-off the system
- The switch can be wired to operate as normally open or normally closed

PART NO	DESCRIPTION
84-J-100	Condensate Overflow Safety Switch - Pan Mount



**84-SS1 Condensate Overflow Safety Switch – Main or Auxiliary Drain Line Mount**



- Designed for installation in the drain pan primary outlet or auxiliary outlet
- Designed for in-line installation in the vertical or horizontal position
- Detects high condensate levels in drain pans and shuts-off the system
- Includes all fittings required for both mounting positions
- The switch is designed to operate only as normally closed
- Includes fittings for 3/4 in. and 1 in. drains and 3/4 in. threaded female pan drain

PART NO	DESCRIPTION
84-SS1	Condensate Overflow Safety Switch - Main or Auxiliary Drain Line Mount



**84-SS2 Condensate Overflow Safety Switch – Auxiliary Drain Line Mount**



- Designed for installation in the drain pan auxiliary outlet
- Detects high condensate levels in drain pans and shuts-off the system
- The switch is designed to operate only as normally closed
- Compact overflow switch with 3/4 in. female slip inlet and 3/4 in. threaded male adapter; two part design for use where obstructions prevent direct threading

PART NO	DESCRIPTION
84-SS2	Condensate Overflow Safety Switch - Auxiliary Drain Line Mount



**84-SS3 Condensate Overflow Safety Switch – Pan Mount**



- Mounts to the side of condensate drain pans
- Detects high condensate levels in drain pans and shuts-off the system
- The switch is designed to operate only as normally closed

PART NO	DESCRIPTION
84-SS3	Condensate Overflow Safety Switch - Pan Mount

**CONDENSATE OVERFLOW SAFETY SWITCHES**



**EZT-222 Condensate Overflow Safety Switch – Auxiliary Drain Line Mount**



- Designed for installation in the drain pan auxiliary outlet
- Detects high condensate levels in drain pans and shuts-off the system
- The switch can be wired to operate as normally open or normally closed; three lead wires
- Compact overflow switch with 3/4 in. male slip inlet designed to direct glue into PVC socket

PART NO	DESCRIPTION
EZT-222	Condensate Overflow Safety Switch - Auxiliary Drain Line Mount



**EZT-224 Condensate Overflow Safety Switch – Auxiliary Drain Line Mount**



- Designed for installation in the drain pan auxiliary outlet
- Detects high condensate levels in drain pans and shuts-off the system
- The switch can be wired to operate as normally open or normally closed; three lead wires
- Compact overflow switch with 3/4 in. male threaded inlet

PART NO	DESCRIPTION
EZT-224	Condensate Overflow Safety Switch - Auxiliary Drain Line Mount



**EZT-225 Condensate Overflow Safety Switch – Main or Auxiliary Drain Line Mount**



- Designed for installation in the drain pan primary outlet or auxiliary outlet
- Designed for in-line installation in the vertical or horizontal position
- Detects high condensate levels in drain pans and shuts-off the system
- Includes all fittings required for both mounting positions
- The switch can be wired to operate as normally open or normally closed; three lead wires
- Includes fittings for 3/4 in. and 1 in. drains and 3/4 in. threaded female drains

PART NO	DESCRIPTION
EZT-225	Condensate Overflow Safety Switch - Main or Auxiliary Drain Line Mount



**EZT-226 Condensate Overflow Safety Switch – Auxiliary Drain Line Mount**



- Designed for installation in the drain pan auxiliary outlet
- Detects high condensate levels in drain pans and shuts-off the system
- The switch can be wired to operate as normally open or normally closed; three lead wires
- Compact overflow switch with 3/4 in. female slip inlet and 3/4 in. threaded male adapter; two part design for use where obstructions prevent direct threading

PART NO	DESCRIPTION
EZT-226	Condensate Overflow Safety Switch - Auxiliary Drain Line Mount

**CONDENSATE NEUTRALIZER KIT**



Neutralizes acidic condensate from high-efficiency gas furnaces; connects using 1/2 in. I.D. tubing; calcium carbonate filter material should be changed yearly.

PART NO	DESCRIPTION
RXGY-A01	Condensate Neutralizer Kit
54-22120-01	Calcium Carbonate Refill Bag (For RXGY-A01)

**BASIC CONDENSATE TRAPS**



**68-23474-01**

**PROTECH**

PART NO	DESCRIPTION
68-23474-01	PVC Trap - 1/2 in.



**86-25172-08**

**PROTECH**

PART NO	DESCRIPTION
86-25172-08	Rubber P-Trap (Fits Over 3/4 in. PVC Pipe)



**EZT-107**

**EZ+TRAP**

3/4 in. side entry cross trap kit; designed for offset mounting on "A" coil applications.  
Includes: 3/4 in. standard trap, 3/4 in. cross, 3/4 in. tee, two 3/4 in. red caps, one 1 in. red cap, 3/4 in. x 3/4 in. x 1 in. reducing tee, 3/4 in. male adaptor, 3/4 in. black stub, and cleaning brush.

PART NO	DESCRIPTION
EZT-107	Cross Trap Kit - 3/4 in. Side Entry



**EZT-110**

**EZ+TRAP**

3/4 in. standard cross trap kit.  
Includes: 3/4 in. standard trap, 3/4 in. cross, 3/4 in. tee, two 3/4 in. red caps, 3/4 in. male adaptor, 3/4 in. black stub, and cleaning brush.

PART NO	DESCRIPTION
EZT-110	Cross Trap Kit - 3/4 in. Standard



**EZT-113**

**EZ+TRAP**

3/4 in. economy trap kit; blow molded U-bend trap, no brush.  
Includes: 3/4 in. blow molded trap, 3/4 in. cross, 3/4 in. tee, and three 3/4 in. red caps.

PART NO	DESCRIPTION
EZT-113	Cross Trap Kit - 3/4 in. Economy



**EZT-113B**

**EZ+TRAP**

Same as EZT-113 except includes cleaning brush.

PART NO	DESCRIPTION
EZT-113B	Cross Trap Kit - 3/4 in. Economy w/Brush



**EZT-119**

**EZ+TRAP**

1 in. high flow commercial trap kit.  
Includes: 1 in. standard trap, 1 in. cross, 1 in. tee, two 1 in. red caps, 1 in. x 3/4 in. bushing, 1 in. male adaptor, 3/4 in. black stub, and cleaning brush.

PART NO	DESCRIPTION
EZT-119	Cross Trap Kit - 1 in. Standard

**BASIC CONDENSATE TRAPS**



**EZT-401**

3/4 in. clear blow molded U-bend trap only.



PART NO	DESCRIPTION
EZT-401	Molded U-Bend Trap - 3/4 in.



**EZT-406**

Flexible cleaning brush only.



PART NO	DESCRIPTION
EZT-406	Flexible Cleaning Brush



**EZT-414**

3/4 in. clean-out cross with two 3/4 in. red caps.



PART NO	DESCRIPTION
EZT-414	Clean-Out Cross - 3/4 in. w/2 Caps



**EZT-415**

3/4 in. clean-out tee with one 3/4 in. red cap.



PART NO	DESCRIPTION
EZT-415	Clean-Out Tee - 3/4 in. w/1 Cap

**ADVANCED CONDENSATE TRAPS**



**EZT-150**

UltraTrap waterless trap kit fits 3/4 in. or 1 in.; eliminates standing water and freezing problems.

Includes: 3/4 in. Ultratrap, 3/4 in. cross, two 3/4 in. red caps, 3/4 in. male adaptor, 3/4 in. coupler, and cleaning brush.



PART NO	DESCRIPTION
EZT-150	UltraTrap Waterless Trap Kit



**EZT-207**

3/4 in. trap with overflow switch; designed for offset mounting on "A" coil applications.

Includes: 3/4 in. standard trap, 3/4 in. cross, 3/4 in. tee, two 3/4 in. red caps, 3/4 in. x 3/4 in. x 1 in. reducing tee, 3/4 in. male adaptor, 3/4 in. black stub, float switch assembly, 48 in. leads, and cleaning brush.



PART NO	DESCRIPTION
EZT-207	Cross Trap Kit - 3/4 in. Switched Side Entry



**EZT-210**

3/4 in. standard trap kit with overflow switch and cross.

Includes: 3/4 in. standard trap, 1 in. cross, 1 in. red cap, two 1 in. x 3/4 in. bushings, 3/4 in. tee, 3/4 in. male adapter, 3/4 in. black stub, float switch assembly, 48 in. leads, and cleaning brush.



PART NO	DESCRIPTION
EZT-210	Cross Trap Kit - 3/4 in. Standard w/Float Switch



## ADVANCED CONDENSATE TRAPS



### EZT-211



Same as EZT-210 except does not include cleaning brush or 3/4 in. male adapter.

PART NO	DESCRIPTION
EZT-211	Cross Trap Kit - 3/4 in. Standard w/Float Switch (w/o Brush or Adapter)



### EZT-626



Combo pack: Includes EZT-113B trap kit plus EZT-226 drain pan overflow switch.

PART NO	DESCRIPTION
EZT-626	Combo Pack (EZT-113 & EZT-226)

## CLEAR VINYL TUBING



PART NO	HOSE ID (IN)	LENGTH (FT)	MATERIAL	COLOR
686012	1/4	100	Vinyl	Clear
686013	3/8	100	Vinyl	Clear
686014	1/2	100	Vinyl	Clear
686015	5/8	100	Vinyl	Clear
686016	3/4	100	Vinyl	Clear
686017	7/8	50	Vinyl	Clear
686018	1	50	Vinyl	Clear

## SANTOPRENE TUBING



79-25353-82 includes two hose clamps.

PART NO	HOSE ID (IN)	LENGTH (FT)	MATERIAL	COLOR
79-25353-82	1/2	2-2/3	Santoprene	Black
79-25353-83	1/2	25	Santoprene	Black

## SILICON TUBING



PART NO	HOSE ID (IN)	HOSE WALL THICKNESS (IN)	LENGTH (IN)	MATERIAL	COLOR	MAX RATED TEMP (°F)
79-21491-81	1/8	1/16	30	Silicone Rubber	Translucent	500
79-21491-91	1/8	1/16	120	Silicone Rubber	Translucent	500
791003	3/16	1/16	12-1/2	Silicone Rubber	White or Red	392
79-21491-83	3/16	1/16	18	Silicone Rubber	White or Red	392
791004	3/16	1/16	36	Silicone Rubber	White or Red	392
79-21491-93	3/16	1/16	120	Silicone Rubber	White or Red	392

**HOSE CLAMPS – WORM DRIVE TYPE**



PART NO	NOM HOSE SIZE OD (IN)	ADJUST RANGE HOSE OD (IN)	CLAMP SIZE	BAND MATERIAL	BAND WIDTH (IN)	TYPE	CASE QTY	CASE REQ
86-25172-05	5/8 – 3/4	9/16 – 1-1/4	12	Stainless Steel Band	1/2	Worm Drive	10	Yes
86-25172-06	3/4 – 1	11/16 – 1-1/2	16	Stainless Steel Band	1/2	Worm Drive	10	Yes
86-25172-07	1 – 1-1/4	3/4 – 1-3/4	20	Stainless Steel Band	1/2	Worm Drive	10	Yes

**HOSE CLAMPS – SNAP GRIP TYPE**



PART NO	NOM HOSE SIZE OD (IN)	ADJUST RANGE HOSE OD (IN)	CLAMP SIZE	BAND MATERIAL	BAND WIDTH (IN)	TYPE	CASE QTY	CASE REQ
64-22043-01	5/8	19/32 – 21/32	—	Nylon	1/4	Snap Grip	—	—
64-22043-02	3/4	11/16 – 25/32	—	Nylon	7/32	Snap Grip	—	—
64-22043-03	9/16	17/32 – 19/32	—	Nylon	1/4	Snap Grip	—	—

**AUXILIARY DRAIN PANS – POLY**



Durable ABS rust-free drain pans; includes 3/4 in. glue PVC fitting.

PART NO	BOTTOM WIDTH (IN)	BOTTOM LENGTH (IN)	TOP WIDTH (IN)	TOP LENGTH (IN)	DEPTH (IN)	MATERIAL	CASE QTY	CASE REQ
686001	18	38	20	40	2	ABS	5	Yes
686002	24	24	26	26	2	ABS	5	Yes
686003	27	39	29	41	2	ABS	5	Yes
686004	27	48	29	50	2	ABS	5	Yes
686005	27	63	29	65	2	ABS	5	Yes
686006	30	30	32	32	2	ABS	5	Yes
686007	30	50	32	52	2	ABS	5	Yes
686008	30	60	32	62	2	ABS	5	Yes
686009	32	63	34	65	2	ABS	5	Yes
686010	36	36	38	38	2	ABS	5	Yes
686011	36	60	38	62	2	ABS	5	Yes

## CONDENSING UNIT COVERS



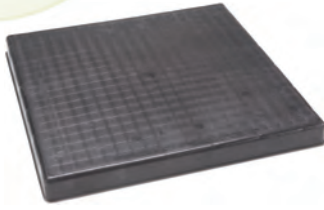
These winter covers are available in many different shapes and sizes, each designed to fit a specific condensing unit. The result is an attractive vinyl cover with a glove-like fit. Made of heavy-duty vinyl with durable cloth backing that resists ripping and tearing.



- Keeps out dirt and debris in winter
- Protects cabinet finish and internal components
- Mold, mildew and UV resistant
- Secured with a convenient hook-and-loop strap sewn around a cutout for the unit's electrical and refrigeration lines
- Four air flaps to provide air flow and prevent condensations
- Neutral gray color
- Custom printed covers available (add -P suffix to part number); one time set-up charge applies

PART NO	CABINET WIDTH (IN)	CABINET LENGTH (IN)	CABINET HEIGHT (IN)	COVER WIDTH (IN)	COVER LENGTH (IN)	COVER HEIGHT (IN)	FITS MODELS
68-205AV	23-1/4	33-3/4	16-3/4	23-3/8	34	16-1/2	[-]JKA-018/024
68-206AV	23-1/4	33-3/4	20-3/4	23-3/8	34	20-1/4	[-]JKA-030, [-]JALB-018/024, [-]JAMB-018/024
68-120AV	23-3/8	23-3/8	26-1/8	23-3/4	23-3/4	25-1/8	[-]JADB-018/19/24/25/30/31, [-]ADC-018/024/030/036/042, [-]ADD-018/025/030/036/042, [-]AFD-19/025/031/036/042, [-]AHE-018/024/030, 10AJA18/24/30/36/42, 12AJB18
68-606AV	23-5/8	23-5/8	24-1/4	24	24	22-3/4	10AJB18/24/30/36/42, 12AJB18, 13AJA18/24, 13AJL18/24, 13AJM18/24
68-629AV	23-3/4	33-1/2	19	24-1/8	33-7/8	18-1/2	[-]JAND-018
68-603AV	23-3/4	35	17	24-1/8	35-7/8	16-1/2	[-]JAKB-018/024
68-603BV	23-3/4	35-1/2	19	24-1/8	35-7/8	18-1/2	[-]JAKB-030, [-]JALC-018/024, [-]JAMC-018/024, [-]JANL-018
68-207AV	27-1/8	38-3/4	20-3/4	27-1/2	39-1/2	20-1/4	[-]JADB-042, [-]JAKA-036/037/042, [-]JALB-030/036, [-]JAMB-030, [-]JAML-024/030, [-]JAPA-024
68-124AV	27-3/8	27-3/8	20	27-3/4	27-3/4	24-3/8	[-]JADB-036/037, [-]JADD-048, [-]JAFD-048, [-]JAE-036, [-]AJA-024/030, 10AJA48, 12AJB24
68-607AV	27-5/8	27-5/8	24-1/4	28	28	22-3/4	12AJB24, 13AJA30, 13AJL30, 14AJA18, 14AJL18/24, 12AJM30, 13AJM30
68-607BV	27-5/8	27-5/8	26-3/4	28	28	24-1/2	10AJB48
68-604AV	27-5/8	39	19	28	40-7/8	18-1/2	[-]JAKB-036/042, [-]JALC-030/036, [-]JAMC-030, [-]JAMM-024/030, [-]JAND-024, [-]JANL-024, [-]JAPL-018, [-]JANL-031, [-]JAPM 018
68-309AV	31	42-1/2	26-3/4	31-1/2	43	26-1/4	[-]JADB-048/060, [-]JADC-048/060, [-]JAKA-048/060, [-]JALB-042/048/060, [-]JAMA-18/24/30/36/42/48, [-]JAMB-048, [-]JAML-048, [-]JANB-024/030/042, [-]JAPA-030/036/042, [-]JAPB-024/030/042
68-423AV	31	42-9/16	20-3/4	31-3/8	43-1/8	20-1/2	[-]JAMB-036/042, [-]JAML-036/042
68-429AV	31	43	34-3/4	31-3/4	43-3/8	33-7/8	[-]JAMA-060, [-]JAMB-060, [-]JAML-060, [-]JANB-036/049/060, [-]JAPA-048/049/060/061, [-]JAPB-036/049/060
68-125AV	31-1/16	31-5/16	26	31-7/8	31-7/8	24-5/8	[-]JADD-060, [-]JAFD-060, [-]JAE-042/048/060, [-]AJA-036/042, 10AJA60, 12AJB30/36/42
68-605AV	31-1/2	44-3/8	19	32-1/4	45	18-1/2	[-]JAMC-036/042, [-]JAMM-036/042, [-]JAND-030, [-]JANL-030, [-]JAPL-024
68-605BV	31-1/2	44-3/8	23	32-1/4	45	22-1/2	[-]JAKB-048/060, [-]JALC-042/048/060, [-]JAMC-048, [-]JAMM-048, [-]JANC-024/030/036/042, [-]JAPC-024/030/042, [-]JARA-024/030, [-]JARL-024, [-]JANL-037, [-]JANL-043
68-605DV	31-1/2	44-3/8	25	32-1/4	45	24-1/2	[-]JAND-036/042, [-]JANL-036/042
68-605EV	31-1/2	44-3/8	29	32-1/4	45	28-1/2	[-]JAPL-030, [-]JANL-049, [-]JAPM-024/030
68-605CV	31-1/2	44-3/8	33	32-1/4	45	32-1/2	[-]JAMC-060, [-]JAMM-060, [-]JANC-048/060, [-]JAND-048/060, [-]JANL-048/060, [-]JAPL-036/042/048/060, [-]JARA-036/042, [-]JARL-036/048/060, [-]JASL-024/036/039/048/060, [-]JAPM-036/042/048/060
68-608AV	31-5/8	31-5/8	27-15/16	32	32	26-1/2	10AJB60, 12AJB30/36/42, 13AJA36/42/48, 13AJL36/42, 14AJA24/30, 14AJL30, 13AJM36/42, 14AJM18/24/30
68-608BV	31-5/8	31-5/8	35-15/16	32	32	34-1/2	12AJB48/60, 13AJA60, 13AJL48/60, 14AJA36/42/48/60, 14AJL36/42/48/60, 13AJM48/60, 14AJM36/42/48/60

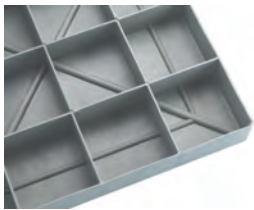
**EQUIPMENT PADS**



**Equipment Pads – Black**

Uses ground recycled rubber in a co-injection process. Extremely durable, resistant to ultraviolet (UV), and heavier than a completely plastic pad.

PART NO	WIDTH (IN)	LENGTH (IN)	THICKNESS (IN)	PAD WEIGHT (LB)	CASE WEIGHT (LB)	CASE QTY	CASE REQ	DIRECT SHIP ITEM
84-25056-01	24	24	2	10	240	24	Yes	—
84-25056-03	24	24	3	12	192	16	Yes	—
84-25056-14	24	26	2	15	360	24	Yes	—
84-25056-04	24	36	3	25	400	16	Yes	—
84-25056-05	28	38	3	25	400	16	Yes	—
84-25056-02	30	30	2	13	312	24	Yes	—
84-25056-06	30	30	3	20	320	16	Yes	—
84-25056-07	30	36	3	29	464	16	Yes	—
84-25056-08	32	32	3	25	400	16	Yes	—
84-25056-09	32	44	3	35	560	16	Yes	—
84-25056-10	36	36	3	23	368	16	Yes	—
84-25056-11	36	48	3	37	592	16	Yes	—
84-25056-15	38	42	2	25	600	24	Yes	—
84-25056-12	45	50	3	73	1168	16	Yes	—
84-25056-13	52	52	3	75	1125	15	Yes	—



**Equipment Pads – E Lite Series**



Rugged design provides uniform and generous ribbing for optimum, self-leveling ground support without inserts. The result is a pad that is lightweight, but not too light. A subtle texture prevents unit slide and presents a classic appearance, which is enhanced by rounded edges and a concrete gray color. Each pad is molded with a size label and a symbol representing content of recycled material.

PART NO	WIDTH (IN)	LENGTH (IN)	THICKNESS (IN)	PAD WEIGHT (LB)	CASE WEIGHT (LB)	CASE QTY	CASE REQ	DIRECT SHIP ITEM
EL2424-2	24	24	2	7	333	44	Yes	Yes
EL2424-3	24	24	3	13	225	16	Yes	Yes
EL2430-2	24	30	2	9	219	22	Yes	Yes
EL2430-3	24	30	3	16	277	16	Yes	Yes
EL2436-2	24	36	2	11	256	22	Yes	Yes
EL2436-3	24	36	3	19	321	16	Yes	Yes
EL2626-2	26	26	2	8	205	22	Yes	Yes
EL3030-2	30	30	2	11	265	22	Yes	Yes
EL3030-3	30	30	3	20	345	16	Yes	Yes
EL3036-2	30	36	2	13	313	22	Yes	Yes
EL3040-2	30	40	2	15	346	22	Yes	Yes
EL3040-3	30	40	3	26	448	16	Yes	Yes
EL3232-2	32	32	2	13	300	22	Yes	Yes
EL3232-3	32	32	3	21	353	16	Yes	Yes
EL3238-2	32	38	2	15	351	22	Yes	Yes
EL3238-3	32	38	3	26	448	16	Yes	Yes
EL3244-2	32	44	2	17	401	22	Yes	Yes
EL3244-3	32	44	3	30	499	16	Yes	Yes
EL3636-2	36	36	2	16	373	22	Yes	Yes
EL3636-3	36	36	3	28	471	16	Yes	Yes
EL3640-2	36	40	2	18	410	22	Yes	Yes
EL3640-3	36	40	3	31	521	16	Yes	Yes
EL3648-2	36	48	2	29	663	22	Yes	Yes
EL3648-3	36	48	3	36	601	16	Yes	Yes

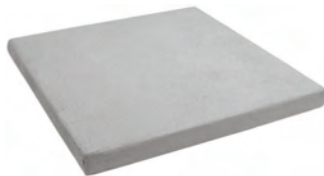
*continued on next page*

**EQUIPMENT PADS**

**Equipment Pads – E Lite Series** CONTINUED



PART NO	WIDTH (IN)	LENGTH (IN)	THICKNESS (IN)	PAD WEIGHT (LB)	CASE WEIGHT (LB)	CASE QTY	CASE REQ	DIRECT SHIP ITEM
EL3870-3	38	70	3	36	604	16	Yes	Yes
EL4558-3	45	58	3	33	545	16	Yes	Yes
EL4848-3	48	48	3	29	481	16	Yes	Yes
EL5252-3	52	52	3	48	793	16	Yes	Yes
EL5658-3	56	58	3	43	715	16	Yes	Yes



**Equipment Pads – UltraLite Series**



A true concrete equipment pad at the weight of plastic (about 2.5 lbs. per square foot). UltraLite® is strengthened by miles of fiber in each square foot of fiber-cement coating. This fiber allows the pad to flex instead of cracking or breaking. The textured surface prevents the condensing unit or portable generator from sliding, and allows water drainage, while the engineered encapsulated polystyrene (EPS) core prevents warping and provides a solid bottom to resist settling. Unaffected by soil conditions, ultraviolet (UV), temperature extremes, and other weather conditions.

PART NO	WIDTH (IN)	LENGTH (IN)	THICKNESS (IN)	PAD WEIGHT (LB)	CASE WEIGHT (LB)	CASE QTY	CASE REQ	DIRECT SHIP ITEM
UC1636-2	16	36	2	11	250	20	Yes	Yes
UC1636-3	16	36	3	18	297	15	Yes	Yes
UC2424-2	24	24	2	15	323	20	Yes	Yes
UC2424-3	24	24	3	18	294	15	Yes	Yes
UC2430-2	24	30	2	17	361	20	Yes	Yes
UC2430-3	24	30	3	21	339	15	Yes	Yes
UC2436-3	24	36	3	26	412	15	Yes	Yes
UC2442-3	24	42	3	28	441	15	Yes	Yes
UC2448-3	24	48	3	28	443	15	Yes	Yes
UC2436-2	24	366	2	22	455	20	Yes	Yes
UC2626-2	26	26	2	17	365	20	Yes	Yes
UC2626-3	26	26	3	17	279	15	Yes	Yes
UC2636-2	26	36	2	21	446	20	Yes	Yes
U2660-3	26	60	3	55	850	15	Yes	Yes
UC2838-3	28	38	3	30	471	15	Yes	Yes
UC3030-2	30	30	2	21	441	20	Yes	Yes
UC3030-3	30	30	3	23	370	15	Yes	Yes
UC3036-2	30	36	2	27	571	20	Yes	Yes
UC3036-3	30	36	3	30	471	15	Yes	Yes
UC3040-2	30	40	2	30	617	20	Yes	Yes
UC3040-3	30	40	3	33	517	15	Yes	Yes
U3060-3	30	60	3	63	970	15	Yes	Yes
UC3143-2	31	43	2	26	551	20	Yes	Yes
UC3232-2	32	32	2	24	501	20	Yes	Yes
UC3232-3	32	32	3	26	411	15	Yes	Yes
UC3237-2	32	37	2	28	579	20	Yes	Yes
UC3237-3	32	37	3	27	436	15	Yes	Yes
U3353-3	33	53	3	68	1045	15	Yes	Yes
UC3434-2	34	34	2	23	493	20	Yes	Yes
UC3434-3	34	34	3	27	427	15	Yes	Yes
UC3445-3	34	45	3	39	612	15	Yes	Yes
UC3636-2	36	36	2	27	555	20	Yes	Yes

*continued on next page*

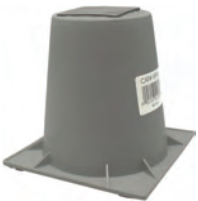
**EQUIPMENT PADS**

**Equipment Pads – UltraLite Series** CONTINUED



PART NO	WIDTH (IN)	LENGTH (IN)	THICKNESS (IN)	PAD WEIGHT (LB)	CASE WEIGHT (LB)	CASE QTY	CASE REQ	DIRECT SHIP ITEM
UC3636-3	36	36	3	24	528	15	Yes	Yes
UC3640-2	36	40	3	29	608	20	Yes	Yes
UC3642-3	36	42	3	32	510	15	Yes	Yes
UC3648-2	36	48	2	35	725	20	Yes	Yes
UC3648-3	36	48	3	37	579	15	Yes	Yes
U3654-3	36	54	3	71	1096	15	Yes	Yes
U3660-3	36	60	3	49	767	15	Yes	Yes
U3678-3	36	78	3	99	1510	15	Yes	Yes
UC3842-2	38	42	2	30	625	20	Yes	Yes
UC3842-3	38	42	3	35	550	15	Yes	Yes
U3865-3	38	65	3	85	1300	15	Yes	Yes
U3870-3	38	70	3	113	1720	15	Yes	Yes
UC4042-3	40	42	3	36	565	15	Yes	Yes
U4054-3	40	54	3	81	1240	15	Yes	Yes
UC4147-2	41	47	2	39	805	20	Yes	Yes
UC4347-3	43	47	3	60	925	15	Yes	Yes
U4550-3	45	50	3	81	1240	15	Yes	Yes
U4558-3	45	58	3	93	1420	15	Yes	Yes
U4848-3	48	48	3	85	1300	15	Yes	Yes
U4854-3	48	54	3	91	1390	15	Yes	Yes
U4866-3	48	66	3	108	1645	15	Yes	Yes
U5056-3	50	56	3	97	1480	15	Yes	Yes
U5075-3	50	75	3	130	1975	15	Yes	Yes
U5079-3	50	79	3	145	2200	15	Yes	Yes
U5252-3	52	52	3	94	1435	15	Yes	Yes
U5557-3	55	57	3	109	1660	15	Yes	Yes
U6067-3	60	67	3	134	2035	15	Yes	Yes

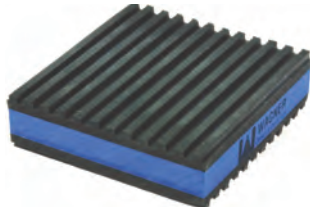
**HEAT PUMP RISERS**



Sturdy and stable one-piece plastic riser to provide the desired elevation for heat pumps and condensing units. Butyl mastic on top eliminates slipping and reduces noise and vibration.

PART NO	DESCRIPTION	CASE QTY	CASE REQ
686019	Heat Pump Riser - 3 in.	48	Yes
686020	Heat Pump Riser - 6 in.	36	Yes

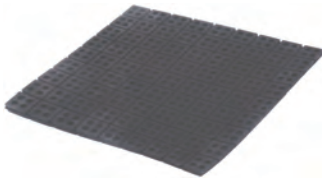
## ANTI-VIBRATION PADS



### E.V.A. Anti-Vibration Pads

E.V.A. “Extreme Vibration Attenuation” pads outperform rubber/cork and “waffle” pads. The enhanced performance comes from the special composite foam center which is more structurally sound than cork. Not affected by oils or chemicals that can break down cork and is much more effective at vibration dampening than solid rubber. Designed to withstand 50 psi.

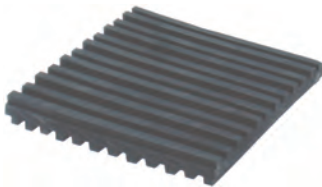
PART NO	DESCRIPTION	CASE QTY	CASE REQ
864011	Anti-Vibration Pad - EVA (2 in. x 2 in. x 7/8 in.)	48	Yes
864012	Anti-Vibration Pad - EVA (3 in. x 3 in. x 7/8 in.)	36	Yes
864013	Anti-Vibration Pad - EVA (4 in. x 4 in. x 7/8 in.)	24	Yes
864014	Anti-Vibration Pad - EVA (18 in. x 18 in. x 7/8 in.)	6	Yes



### Iso-Cube Anti-Vibration Pads

Natural rubber pads, designed to reduce vibration and noise emanating from refrigeration and air conditioning equipment. The circular design in each pad offers a suction cup effect, which eliminates the need to bolt the pads down. A standard 18 in. pad is divided into eighty one 2 in. segments, each of which may be cut or torn to provide smaller pads. 50 durometer pads will withstand a load of 180 psi with greater resiliency.

PART NO	DESCRIPTION	CASE QTY	CASE REQ
86-25161-01	Iso-Cube Anti-Vibration Pad (18 in. x 18 in. - 2 in. segments)	6	Yes



### Rubber Anti-Vibration Pads

High quality elastomeric oil resistant padding. Corrugated on both sides. Ideal for air conditioners, compressors, cooling towers, presses, machines, etc. Designed to withstand 50 psi.

PART NO	DESCRIPTION	CASE QTY	CASE REQ
864001	Anti-Vibration Pad - Rubber (2 in. x 2 in. x 3/8 in.)	48	Yes
864003	Anti-Vibration Pad - Rubber (3 in. x 3 in. x 3/8 in.)	36	Yes
864005	Anti-Vibration Pad - Rubber (4 in. x 4 in. x 3/8 in.)	24	Yes
864007	Anti-Vibration Pad - Rubber (6 in. x 6 in. x 3/8 in.)	24	Yes
864009	Anti-Vibration Pad - Rubber (18 in. x 18 in. x 3/8 in.)	6	Yes



### Rubber/Cork Anti-Vibration Pads

These pads are made with high quality elastomeric oil resistant padding. Corrugated on both sides and laminated to the cork center. Designed to withstand 50 psi.

PART NO	DESCRIPTION	CASE QTY	CASE REQ
864002	Anti-Vibration Pad - Rubber/Cork (2 in. x 2 in. x 7/8 in.)	48	Yes
864004	Anti-Vibration Pad - Rubber/Cork (3 in. x 3 in. x 7/8 in.)	36	Yes
864006	Anti-Vibration Pad - Rubber/Cork (4 in. x 4 in. x 7/8 in.)	24	Yes
864008	Anti-Vibration Pad - Rubber/Cork (6 in. x 6 in. x 7/8 in.)	24	Yes
864010	Anti-Vibration Pad - Rubber/Cork (18 in. x 18 in. x 7/8 in.)	6	Yes

**GAS BALL VALVES**



For use with Natural Gas, LP, manufactured and gas-air mixtures. Two-piece brass body and chrome-plated forged brass ball. Heavy-duty valves have a two-piece forged brass body.

PART NO	DESCRIPTION	CASE QTY	CASE REQ
61-25122-01	Gas Ball Valve (1/2 in. NPT)	12	Yes
61-25122-02	Gas Ball Valve (3/4 in. NPT)	12	Yes
611004	Gas Ball Valve - Heavy Duty (3/4 in. NPT)	10	Yes
611005	Gas Ball Valve - Heavy Duty (1 in. NPT)	6	Yes

**FLEXIBLE GAS CONNECTORS**



- For use with Natural Gas, LP, manufactured, and gas-air mixtures for residential and commercial gas appliances
- Designed for both indoor and outdoor applications
- Austenitic stainless steel tubing material is with high chromium content with no soldered or brazed joints
- Powder-coat polymer connector tube coating for enhanced corrosion resistance
- Zinc-plated 12L14 or 1010 steel connector nuts and fittings
- -40°F to 150°F operating temperature
- Greater depth and number of corrugations to withstand greater torque and bend cycles
- CSA listed to ANSI Z21.24, CSA 6.10, ANSI Z21.75, CSA 6.27; AGAL Contract no. 8204 (American Gas Association Laboratories tested and accepted for vibration resistance to 25 years)
- Listed by the New York City Board of Standards and Appeals and by the Commonwealth of Massachusetts Division of Registration in addition to many gas utilities and local code bodies nationwide



**CSSC54 - 48**  
TYPE FITTINGS LENGTH

**Type:**

- CSSC** Coated Stainless Steel – 1/2 in. I.D. (5/8 in. O.D.) Tube
- CSSD** Coated Stainless Steel – 3/8 in. I.D. (1/2 in. O.D.) Tube
- CSSL** Coated Stainless Steel – 1/4 in. I.D. (3/8 in. O.D.) Tube

**Fittings:**

- 1** 3/4 in. Male NPT (with 1/2 in. Female NPT)
- 2** 3/4 in. Female NPT
- 4** 1/2 in. Male NPT (with 3/8 in. Female NPT)
- 5** 1/2 in. Female NPT
- J** 3/4 in. Female NPT Ball Valve
- K** 1/2 in. Female NPT Ball Valve

**Length (inches):**

- Standard lengths: 12, 18, 24, 30, 36, 48, 60, and 72
- Standard lengths include adaptors
- Connectors with ball valves are approximately 1 in. longer

**Flexible Gas Connector – 3/8 Inch O.D. Tube with Fittings**

PART NO	CONNECTOR TUBE OD (IN)	CONNECTOR TUBE ID (IN)	LENGTH (IN)	FITTING TYPE 1	FITTING 1 SIZE NPT (IN)	FITTING TYPE 2	FITTING 2 SIZE NPT (IN)	BALL VALVE ON FITTING 2	CASE QTY	CASE REQ
CSSL54-24	3/8	1/4	24	Male	1/2	Female	1/2	Not Included	25	Yes

**Flexible Gas Connectors – 1/2 Inch O.D. Tube with Ball Valve**

PART NO	CONNECTOR TUBE OD (IN)	CONNECTOR TUBE ID (IN)	LENGTH (IN)	FITTING TYPE 1	FITTING 1 SIZE NPT (IN)	FITTING TYPE 2	FITTING 2 SIZE NPT (IN)	BALL VALVE ON FITTING 2	CASE QTY	CASE REQ
CSSD4K-18	1/2	3/8	18	Male	1/2	Female	1/2	Included	25	Yes
CSSD4K-36	1/2	3/8	36	Male	1/2	Female	1/2	Included	25	Yes
CSSD4K-48	1/2	3/8	48	Male	1/2	Female	1/2	Included	25	Yes



## FLEXIBLE GAS CONNECTORS

### Flexible Gas Connector – 1/2 Inch O.D. Tube with Fittings

PART NO	CONNECTOR TUBE OD (IN)	CONNECTOR TUBE ID (IN)	LENGTH (IN)	FITTING TYPE 1	FITTING 1 SIZE NPT (IN)	FITTING TYPE 2	FITTING 2 SIZE NPT (IN)	BALL VALVE ON FITTING 2	CASE QTY	CASE REQ
CSSD44-18	1/2	3/8	18	Male	1/2	Male	1/2	Not Included	25	Yes
CSSD54-24	1/2	3/8	24	Male	1/2	Female	1/2	Not Included	25	Yes
CSSD44-24	1/2	3/8	24	Male	1/2	Male	1/2	Not Included	25	Yes
CSSD54-36	1/2	3/8	36	Male	1/2	Female	1/2	Not Included	25	Yes
CSSD44-36	1/2	3/8	36	Male	1/2	Male	1/2	Not Included	25	Yes

### Flexible Gas Connectors – 5/8 Inch O.D. Tube with Ball Valve


PART NO	CONNECTOR TUBE OD (IN)	CONNECTOR TUBE ID (IN)	LENGTH (IN)	FITTING TYPE 1	FITTING 1 SIZE NPT (IN)	FITTING TYPE 2	FITTING 2 SIZE NPT (IN)	BALL VALVE ON FITTING 2	CASE QTY	CASE REQ
CSSC4K-18	5/8	1/2	18	Male	1/2	Female	1/2	Included	20	Yes
CSSC1J-18	5/8	1/2	18	Male	3/4	Female	3/4	Included	25	Yes
CSSC4K-24	5/8	1/2	24	Male	1/2	Female	1/2	Included	20	Yes
CSSC1J-24	5/8	1/2	24	Male	3/4	Female	3/4	Included	25	Yes
CSSC4K-36	5/8	1/2	36	Male	1/2	Female	1/2	Included	20	Yes
CSSC1J-36	5/8	1/2	36	Male	3/4	Female	3/4	Included	25	Yes

### Flexible Gas Connectors – 5/8 Inch O.D. Tube with Fittings

PART NO	CONNECTOR TUBE OD (IN)	CONNECTOR TUBE ID (IN)	LENGTH (IN)	FITTING TYPE 1	FITTING 1 SIZE NPT (IN)	FITTING TYPE 2	FITTING 2 SIZE NPT (IN)	BALL VALVE ON FITTING 2	CASE QTY	CASE REQ
CSSC54-12	5/8	1/2	12	Male	1/2	Female	1/2	Not Included	25	Yes
CSSC54-18	5/8	1/2	18	Male	1/2	Female	1/2	Not Included	25	Yes
CSSC44-18	5/8	1/2	18	Male	1/2	Male	1/2	Not Included	25	Yes
CSSC21-18	5/8	1/2	18	Male	3/4	Female	3/4	Not Included	25	Yes
CSSC11-18	5/8	1/2	18	Male	3/4	Male	3/4	Not Included	25	Yes
CSSC54-24	5/8	1/2	24	Male	1/2	Female	1/2	Not Included	25	Yes
CSSC44-24	5/8	1/2	24	Male	1/2	Male	1/2	Not Included	25	Yes
CSSC21-24	5/8	1/2	24	Male	3/4	Female	3/4	Not Included	25	Yes
CSSC14-24	5/8	1/2	24	Male	3/4	Male	1/2	Not Included	25	Yes
CSSC11-24	5/8	1/2	24	Male	3/4	Male	3/4	Not Included	25	Yes
CSSC44-30	5/8	1/2	30	Male	1/2	Male	1/2	Not Included	25	Yes
CSSC14-30	5/8	1/2	30	Male	3/4	Male	1/2	Not Included	25	Yes
CSSC55-36	5/8	1/2	36	Female	1/2	Female	1/2	Not Included	25	Yes
CSSC54-36	5/8	1/2	36	Male	1/2	Female	1/2	Not Included	25	Yes
CSSC44-36	5/8	1/2	36	Male	1/2	Male	1/2	Not Included	25	Yes
CSSC21-36	5/8	1/2	36	Male	3/4	Female	3/4	Not Included	25	Yes
CSSC14-36	5/8	1/2	36	Male	3/4	Male	1/2	Not Included	25	Yes
CSSC55-48	5/8	1/2	48	Female	1/2	Female	1/2	Not Included	25	Yes
CSSC25-48	5/8	1/2	48	Female	3/4	Female	1/2	Not Included	25	Yes
CSSC54-48	5/8	1/2	48	Male	1/2	Female	1/2	Not Included	25	Yes
CSSC44-48	5/8	1/2	48	Male	1/2	Male	1/2	Not Included	25	Yes
CSSC21-48	5/8	1/2	48	Male	3/4	Female	3/4	Not Included	25	Yes
CSSC14-48	5/8	1/2	48	Male	3/4	Male	1/2	Not Included	25	Yes
CSSC54-60	5/8	1/2	60	Male	1/2	Female	1/2	Not Included	12	Yes
CSSC44-60	5/8	1/2	60	Male	1/2	Male	1/2	Not Included	12	Yes
CSSC21-60	5/8	1/2	60	Male	3/4	Female	3/4	Not Included	12	Yes
CSSC54-72	5/8	1/2	72	Male	1/2	Female	1/2	Not Included	12	Yes


## BLACK IRON PIPE AND FITTINGS

### Black Iron Cut Pipe and Nipples – 1/2 Inch NPT



PART NO	LENGTH (IN)	THREAD SIZE NPT (IN)	SCHEDULE NO	CASE QTY	CASE REQ
362206	Close	1/2	40	25	Yes
362207	1-1/2	1/2	40	25	Yes
362208	2	1/2	40	25	Yes
362209	2-1/2	1/2	40	25	Yes
362210	3	1/2	40	25	Yes
362211	3-1/2	1/2	40	25	Yes
362212	4	1/2	40	25	Yes
362213	4-1/2	1/2	40	25	Yes
362214	5	1/2	40	25	Yes
362215	5-1/2	1/2	40	25	Yes
362216	6	1/2	40	25	Yes
362218	7	1/2	40	25	Yes
362220	8	1/2	40	25	Yes
362222	9	1/2	40	25	Yes
362224	10	1/2	40	25	Yes
362226	11	1/2	40	25	Yes
362228	12	1/2	40	25	Yes
362231	15	1/2	40	5	Yes
362233	18	1/2	40	5	Yes
362234	24	1/2	40	5	Yes
362235	30	1/2	40	5	Yes
362236	36	1/2	40	5	Yes
362237	48	1/2	40	5	Yes
362238	60	1/2	40	5	Yes

### Black Iron Cut Pipe and Nipples – 3/4 Inch NPT



PART NO	LENGTH (IN)	THREAD SIZE NPT (IN)	SCHEDULE NO	CASE QTY	CASE REQ
362241	Close	3/4	40	25	Yes
362242	1-1/2	3/4	40	25	Yes
362243	2	3/4	40	25	Yes
362244	2-1/2	3/4	40	25	Yes
362245	3	3/4	40	25	Yes
362246	3-1/2	3/4	40	25	Yes
362247	4	3/4	40	25	Yes
362248	4-1/2	3/4	40	25	Yes
362249	5	3/4	40	25	Yes
362250	5-1/2	3/4	40	25	Yes
362251	6	3/4	40	25	Yes
362253	7	3/4	40	25	Yes
362255	8	3/4	40	25	Yes
362257	9	3/4	40	25	Yes
362259	10	3/4	40	25	Yes
362261	11	3/4	40	25	Yes
362263	12	3/4	40	25	Yes
362268	18	3/4	40	5	Yes
362272B	24	3/4	40	5	Yes
362272H	30	3/4	40	5	Yes
362272N	36	3/4	40	5	Yes

**BLACK IRON PIPE AND FITTINGS**



**Black Iron Cut Pipe and Nipples – 1 Inch NPT**

PART NO	LENGTH (IN)	THREAD SIZE NPT (IN)	SCHEDULE NO	CASE QTY	CASE REQ
362276	Close	1	40	25	Yes
362277	2	1	40	25	Yes
362278	2-1/2	1	40	25	Yes
362279	3	1	40	25	Yes
362280	3-1/2	1	40	25	Yes
362281	4	1	40	25	Yes
362282	4-1/2	1	40	25	Yes
362283	5	1	40	25	Yes
362284	5-1/2	1	40	25	Yes
362285	6	1	40	25	Yes
362287	7	1	40	25	Yes
362289	8	1	40	25	Yes
362291	9	1	40	25	Yes
362293	10	1	40	5	Yes
362295	11	1	40	5	Yes
362297	12	1	40	25	Yes
362303	18	1	40	5	Yes
362309	24	1	40	5	Yes
362309F	30	1	40	5	Yes
362309L	36	1	40	5	Yes



**Black Iron Cut Pipe and Nipples – 1-1/4 Inch NPT**

PART NO	LENGTH (IN)	THREAD SIZE NPT (IN)	SCHEDULE NO	CASE QTY	CASE REQ
362310	Close	1-1/4	40	25	Yes
362311	2	1-1/4	40	25	Yes
362312	2-1/2	1-1/4	40	25	Yes
362313	3	1-1/4	40	25	Yes
362314	3-1/2	1-1/4	40	25	Yes
362315	4	1-1/4	40	25	Yes
362316	4-1/2	1-1/4	40	25	Yes
362317	5	1-1/4	40	25	Yes
362318	5-1/2	1-1/4	40	25	Yes
362319	6	1-1/4	40	25	Yes
362321	7	1-1/4	40	25	Yes
362323	8	1-1/4	40	25	Yes
362327	10	1-1/4	40	5	Yes
362329	11	1-1/4	40	5	Yes
362331	12	1-1/4	40	5	Yes
362337	18	1-1/4	40	5	Yes
362343	24	1-1/4	40	5	Yes
362343F	30	1-1/4	40	5	Yes
362343L	36	1-1/4	40	5	Yes

**BLACK IRON PIPE AND FITTINGS**



**Black Iron Cut Pipe and Nipples – 1-1/2 Inch NPT**

PART NO	LENGTH (IN)	THREAD SIZE NPT (IN)	SCHEDULE NO	CASE QTY	CASE REQ
362344	Close	1-1/2	40	25	Yes
362345	2	1-1/2	40	25	Yes
362346	2-1/2	1-1/2	40	25	Yes
362347	3	1-1/2	40	25	Yes
362348	3-1/2	1-1/2	40	25	Yes
362349	4	1-1/2	40	25	Yes
362351	5	1-1/2	40	25	Yes
362352	5-1/2	1-1/2	40	25	Yes
362353	6	1-1/2	40	25	Yes
362357	8	1-1/2	40	25	Yes
362361	10	1-1/2	40	5	Yes
362365	12	1-1/2	40	5	Yes
362371	18	1-1/2	40	5	Yes
362377	24	1-1/2	40	5	Yes
362377F	30	1-1/2	40	5	Yes
362377L	36	1-1/2	40	5	Yes



**Black Iron Cut Pipe and Nipples – 2 Inch NPT**

PART NO	LENGTH (IN)	THREAD SIZE NPT (IN)	SCHEDULE NO	CASE QTY	CASE REQ
362378	Close	2	40	25	Yes
362379	2-1/2	2	40	25	Yes
362380	3	2	40	25	Yes
362381	3-1/2	2	40	25	Yes
362382	4	2	40	25	Yes
362384	5	2	40	25	Yes
362385	5-1/2	2	40	25	Yes
362386	6	2	40	25	Yes
362390	8	2	40	25	Yes
362394	10	2	40	5	Yes
362398	12	2	40	5	Yes
362404	18	2	40	5	Yes
362410	24	2	40	5	Yes
362410F	30	2	40	5	Yes
362410L	36	2	40	5	Yes



**Nipple Assortments**

PART NO	DESCRIPTION
362001AP	Black Pipe Nipple Assortment - 66 Assorted Lengths of 1/2 in. Nipples
362002AP	Black Pipe Nipple Assortment - 66 Assorted Lengths of 3/4 in. Nipples
362003AP	Black Pipe Nipple Assortment - 60 Assorted Lengths of 1 in. Nipples

## BLACK IRON PIPE AND FITTINGS



### Black Iron Elbows – 90 Degrees

PART NO	FITTING 1 SIZE NPT (IN)	FITTING 2 SIZE NPT (IN)	ELBOW ANGLE (DEGREES)	FITTING CLASS	CASE QTY	CASE REQ
660101	1/4	1/4	90	150	120	Yes
660102	3/8	3/8	90	150	60	Yes
660103	1/2	1/2	90	150	90	Yes
660147	1/2	3/4	90	150	80	Yes
660104	3/4	3/4	90	150	35	Yes
660149	3/4	1	90	150	50	Yes
660105	1	1	90	150	90	Yes
660106	1-1/4	1-1/4	90	150	50	Yes
660107	1-1/2	1-1/2	90	150	9	Yes
660108	2	2	90	150	8	Yes



### Black Iron Elbows – 45 Degrees

PART NO	FITTING 1 SIZE NPT (IN)	FITTING 2 SIZE NPT (IN)	ELBOW ANGLE (DEGREES)	FITTING CLASS	CASE QTY	CASE REQ
660181	1/4	1/4	45	150	50	Yes
660182	3/8	3/8	45	150	75	Yes
660183	1/2	1/2	45	150	50	Yes
660184	3/4	3/4	45	150	40	Yes
660185	1	1	45	150	30	Yes
660186	1-1/4	1-1/4	45	150	20	Yes
660187	1-1/2	1-1/2	45	150	10	Yes
660188	2	2	45	150	12	Yes



### Black Iron Street Elbows – 90 Degrees

PART NO	FITTING 1 SIZE NPT (IN)	FITTING 2 SIZE NPT (IN)	ELBOW ANGLE (DEGREES)	FITTING CLASS	CASE QTY	CASE REQ
660121	1/4	1/4	90	150	120	Yes
660122	3/8	3/8	90	150	90	Yes
660123	1/2	1/2	90	150	90	Yes
660124	3/4	3/4	90	150	35	Yes
660125	1	1	90	150	30	Yes
660126	1-1/4	1-1/4	90	150	20	Yes
660127	1-1/2	1-1/2	90	150	15	Yes
660128	2	2	90	150	8	Yes



### Black Iron Street Elbows – 45 Degrees

PART NO	FITTING 1 SIZE NPT (IN)	FITTING 2 SIZE NPT (IN)	ELBOW ANGLE (DEGREES)	FITTING CLASS	CASE QTY	CASE REQ
660201	1/4	1/4	45	150	10	Yes
660202	3/8	3/8	45	150	25	Yes
660203	1/2	1/2	45	150	25	Yes
660204	3/4	3/4	45	150	25	Yes
660205	1	1	45	150	40	Yes
660206	1-1/4	1-1/4	45	150	20	Yes
660207	1-1/2	1-1/2	45	150	5	Yes
660208	2	2	45	150	5	Yes

**BLACK IRON PIPE AND FITTINGS**



**Black Iron Merchant Couplings**

PART NO	FITTING 1 SIZE NPT (IN)	FITTING 2 SIZE NPT (IN)	FITTING CLASS	CASE QTY	CASE REQ
MCB1013	1/2	1/2	150	25	Yes
MCB1014	3/4	3/4	150	50	Yes



**Black Iron Couplings**

PART NO	FITTING 1 SIZE NPT (IN)	FITTING 2 SIZE NPT (IN)	FITTING CLASS	CASE QTY	CASE REQ
660322	3/8	3/8	150	120	Yes
660323	1/2	1/2	150	120	Yes
660324	3/4	3/4	150	75	Yes
660325	1	1	150	50	Yes
660326	1-1/4	1-1/4	150	16	Yes
660327	1-1/2	1-1/2	150	18	Yes
660328	2	2	150	12	Yes



**Black Iron Reducing Couplings**

PART NO	FITTING 1 SIZE NPT (IN)	FITTING 2 SIZE NPT (IN)	FITTING CLASS	CASE QTY	CASE REQ
660545	1/2	3/8	150	75	Yes
660549	3/4	1/2	150	90	Yes
660552	1	1/2	150	60	Yes
660553	1	3/4	150	50	Yes
660554	1-1/4	1/2	150	25	Yes
660556	1-1/4	1	150	15	Yes



**Black Iron Tees**

PART NO	FITTING 1 SIZE NPT (IN)	FITTING 2 SIZE NPT (IN)	BRANCH FITTING SIZE NPT (IN)	FITTING CLASS	CASE QTY	CASE REQ
660221	1/4	1/4	1/4	150	75	Yes
660222	3/8	3/8	3/8	150	45	Yes
660223	1/2	1/2	1/2	150	60	Yes
660224	3/4	3/4	3/4	150	35	Yes
660225	1	1	1	150	20	Yes
660226	1-1/4	1-1/4	1-1/4	150	14	Yes
660227	1-1/2	1-1/2	1-1/2	150	24	Yes
660228	2	2	2	150	8	Yes



**Black Iron Reducing Tees**

PART NO	FITTING 1 SIZE NPT (IN)	FITTING 2 SIZE NPT (IN)	BRANCH FITTING SIZE NPT (IN)	FITTING CLASS	CASE QTY	CASE REQ
6602431	1/2	1/2	3/4	150	120	Yes
660247	3/4	1/2	1/2	150	55	Yes
660248	3/4	1/2	3/4	150	50	Yes
660246	3/4	3/4	1/2	150	40	Yes
660251	1	1	1/2	150	30	Yes

## BLACK IRON PIPE AND FITTINGS



### Black Iron Unions

PART NO	FITTING 1 SIZE NPT (IN)	FITTING 2 SIZE NPT (IN)	FITTING CLASS	CASE QTY	CASE REQ
660511	1/4	1/4	150	60	Yes
660512	3/8	3/8	150	40	Yes
660513	1/2	1/2	150	50	Yes
660514	3/4	3/4	150	35	Yes
660515	1	1	150	20	Yes
660516	1-1/4	1-1/4	150	15	Yes
660517	1-1/2	1-1/2	150	10	Yes
660518	2	2	150	6	Yes



### Black Iron Reducing Bushings

PART NO	FITTING 1 SIZE NPT (IN)	FITTING 2 SIZE NPT (IN)	FITTING CLASS	CASE QTY	CASE REQ
660399	1/2	3/4	150	150	Yes
660402	1/2	1	150	100	Yes
660403	3/4	1	150	100	Yes



### Black Iron Caps

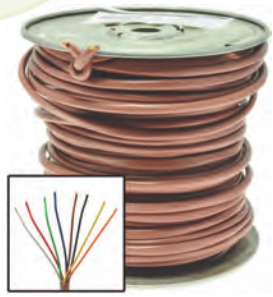
PART NO	THREAD SIZE NPT (IN)	FITTING CLASS	CASE QTY	CASE REQ
660451	1/4	150	50	Yes
660452	3/8	150	80	Yes
660453	1/2	150	150	Yes
660454	3/4	150	80	Yes
660455	1	150	50	Yes
660456	1-1/4	150	20	Yes
660457	1-1/2	150	18	Yes
660458	2	150	12	Yes



### Black Iron Plugs

PART NO	THREAD SIZE NPT (IN)	FITTING CLASS	CASE QTY	CASE REQ
660471	1/4	150	180	Yes
660472	3/8	150	300	Yes
660473	1/2	150	300	Yes
660474	3/4	150	180	Yes
660475	1	150	120	Yes
660476	1-1/4	150	40	Yes
660477	1-1/2	150	30	Yes
660478	2	150	30	Yes

**THERMOSTAT CABLE**



**Thermostat Cable – Spools**

**Honeywell**

PART NO	NUMBER OF CONDUCTORS	CONDUCTOR SIZE (AWG)	CONDUCTOR TYPE	JACKET COLOR	PLENUM RATED	PACKAGING	ROLL LENGTH (FT)	CASE QTY	CASE REQ
47104807	2	18	Solid copper	Brown	—	Spool	500	4	Yes
47114807	3	18	Solid copper	Brown	—	Spool	500	4	Yes
47120307	4	18	Solid copper	Brown	—	Spool	250	4	Yes
47130307	5	18	Solid copper	Brown	—	Spool	250	4	Yes
47140307	6	18	Solid copper	Brown	—	Spool	250	4	Yes
47160307	8	18	Solid copper	Brown	—	Spool	250	4	Yes
47070307	8	20	Solid copper	Brown	—	Spool	250	4	Yes
47180307	10	18	Solid copper	Brown	—	Spool	250	4	Yes



**Thermostat Cable – Speedbags**

**Honeywell**

PART NO	NUMBER OF CONDUCTORS	CONDUCTOR SIZE (AWG)	CONDUCTOR TYPE	JACKET COLOR	PLENUM RATED	PACKAGING	ROLL LENGTH (FT)	CASE QTY	CASE REQ
47105807	2	18	Solid copper	Brown	—	Speedbag	500	1	—
47115807	3	18	Solid copper	Brown	—	Speedbag	500	1	—
47120907	4	18	Solid copper	Brown	—	Speedbag	250	1	—
47130907	5	18	Solid copper	Brown	—	Speedbag	250	1	—
47140907	6	18	Solid copper	Brown	—	Speedbag	250	1	—
47160907	8	18	Solid copper	Brown	—	Speedbag	250	1	—
47070907	8	20	Solid copper	Brown	—	Speedbag	250	1	—
47180907	10	18	Solid copper	Brown	—	Speedbag	250	1	—



**Thermostat Wire (Plenum Rated) – Spools**

**Honeywell**

PART NO	NUMBER OF CONDUCTORS	CONDUCTOR SIZE (AWG)	CONDUCTOR TYPE	JACKET COLOR	PLENUM RATED	PACKAGING	ROLL LENGTH (FT)	CASE QTY	CASE REQ
47614812	3	18	Solid copper	Natural	Yes	Spool	500	4	Yes
47630312	5	18	Solid copper	Natural	Yes	Spool	250	4	Yes
47640312	6	18	Solid copper	Natural	Yes	Spool	250	4	Yes
47660312	8	18	Solid copper	Natural	Yes	Spool	250	4	Yes

**REFRIGERANT RECOVERY CYLINDERS**



Worthington Cylinders refrigerant recovery cylinders meet AHRI guidelines and government specifications for CFC, HCFC and HFC recovered refrigerants. Cylinders with IMO device include a liquid level switch that cuts off flow to the tank when it is approximately 80% full.



PART NO	DESCRIPTION
285311	Refrigerant Recovery Cylinder - 400 psi (30 lbs.)
285313	Refrigerant Recovery Cylinder w/IMO - 400 psi (30 lbs.)
285397	Refrigerant Recovery Cylinder - 400 psi (50 lbs.)
285402	Refrigerant Recovery Cylinder w/IMO - 400 psi (50 lbs.)



## NOVENT CAPS

- Resist tampering with refrigerant service ports and refrigerant tanks by children and unauthorized personnel
- Help eliminate theft and vandalism
- Corrosion-resistant color-coded caps to identify type of refrigerant and prevent mixing
- O-ring seal provides positive backup for leaking service valves
- Patented design

**NOVENT**

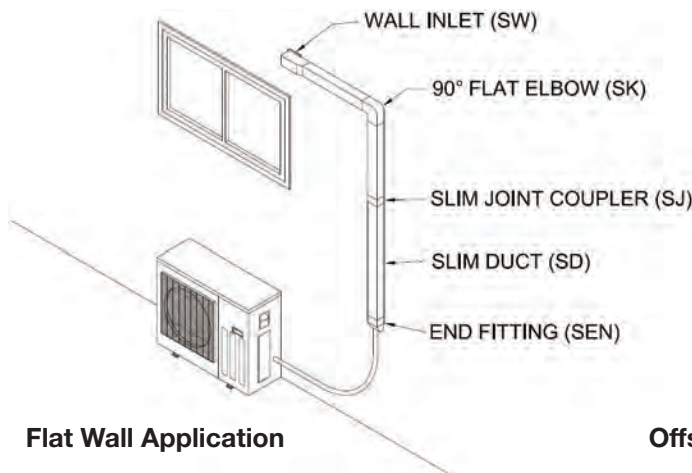


PART NO	DESCRIPTION
NG-R22-10PK	Cap for R-22 - Green (Pack of 10)
NG-R410-10PK	Cap for R-410A - Pink (Pack of 10)
NV-MULTIKEY	Multi Key (Fits All Novent Caps)
NG-R22-SDT	Screwdriver Key for R-22 Cap
NG-R410-SDT	Screwdriver Key for R-410A Cap

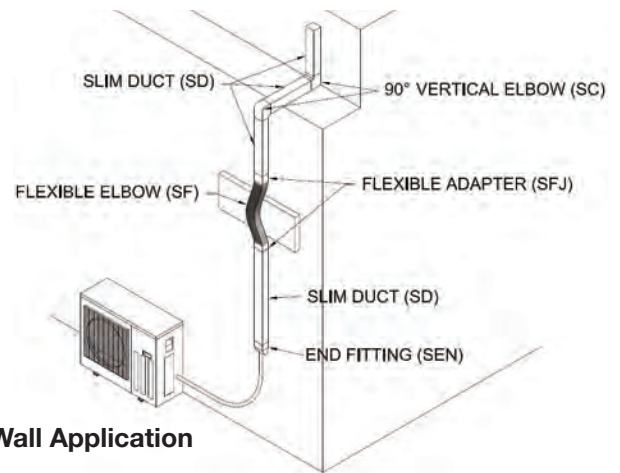
## SLIMDUCT LINESET DUCTING SYSTEM

The SlimDuct series is a precision engineered system of prefabricated PVC ducts which are designed to conceal and protect external surface mounted refrigeration line sets. They can also be used to conceal drain hoses and electrical wiring. SlimDuct is weather resistant and available in three colors: ivory, white, or brown. Installation is simple with easy access for the technician.

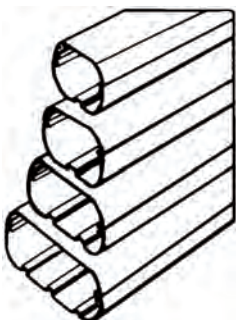
**SLIMDUCT**



**Flat Wall Application**



**Offset Wall Application**



### SlimDuct SD Series Lineset Ducting

PART NO	SERIES	FITTING TYPE	COLOR	NOMINAL CROSS SECTION (IN)	NOMINAL LENGTH (IN)	CASE QTY	CASE REQ
SD-77-B	SD	Ducting	Brown	3 x 2-1/2	78	5	Yes
SD-100-B	SD	Ducting	Brown	4 x 2-3/4	78	5	Yes
SD-140-B	SD	Ducting	Brown	5-1/2 x 3	78	5	Yes
SD-77-I	SD	Ducting	Ivory	3 x 2-1/2	78	5	Yes
SD-100-I	SD	Ducting	Ivory	4 x 2-3/4	78	5	Yes
SD-140-I	SD	Ducting	Ivory	5-1/2 x 3	78	5	Yes
SD-77-W	SD	Ducting	White	3 x 2-1/2	78	5	Yes
SD-100-W	SD	Ducting	White	4 x 2-3/4	78	5	Yes
SD-140-W	SD	Ducting	White	5-1/2 x 3	78	5	Yes

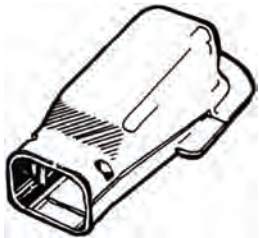
**SLIMDUCT LINESET DUCTING SYSTEM**



**SlimDuct SJ Series Couplers**

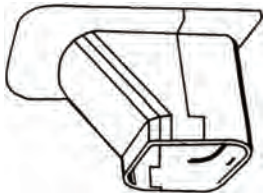
**SLIMDUCT**

PART NO	SERIES	FITTING TYPE	COLOR	NOMINAL CROSS SECTION (IN)	NOMINAL LENGTH (IN)	CASE QTY	CASE REQ
SJ-77-B	SJ	Coupler (Slim Joint)	Brown	3 x 2-1/2	2	20	Yes
SJ-100-B	SJ	Coupler (Slim Joint)	Brown	4 x 2-3/4	2-1/2	20	Yes
SJ-140-B	SJ	Coupler (Slim Joint)	Brown	5-1/2 x 3	3-1/2	20	Yes
SJ-77-I	SJ	Coupler (Slim Joint)	Ivory	3 x 2-1/2	2	20	Yes
SJ-100-I	SJ	Coupler (Slim Joint)	Ivory	4 x 2-3/4	2-1/2	20	Yes
SJ-140-I	SJ	Coupler (Slim Joint)	Ivory	5-1/2 x 3	3-1/2	20	Yes
SJ-77-W	SJ	Coupler (Slim Joint)	White	3 x 2-1/2	2	20	Yes
SJ-100-W	SJ	Coupler (Slim Joint)	White	4 x 2-3/4	2-1/2	20	Yes
SJ-140-W	SJ	Coupler (Slim Joint)	White	5-1/2 x 3	3-1/2	20	Yes



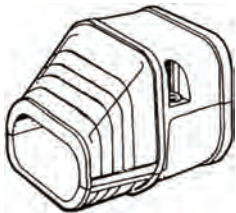
**SlimDuct SW Series Wall Inlets**

PART NO	SERIES	FITTING TYPE	COLOR	NOMINAL CROSS SECTION (IN)	NOMINAL LENGTH (IN)	CASE QTY	CASE REQ
SW-77-B	SW	Wall Inlet (Wall Corner)	Brown	3 x 2-1/2	8	20	Yes
SW-100-B	SW	Wall Inlet (Wall Corner)	Brown	4 x 2-3/4	8-3/4	10	Yes
SW-140-B	SW	Wall Inlet (Wall Corner)	Brown	5-1/2 x 3	11	5	Yes
SW-77-I	SW	Wall Inlet (Wall Corner)	Ivory	3 x 2-1/2	8	20	Yes
SW-100-I	SW	Wall Inlet (Wall Corner)	Ivory	4 x 2-3/4	8-3/4	10	Yes
SW-140-I	SW	Wall Inlet (Wall Corner)	Ivory	5-1/2 x 3	11	5	Yes
SW-77-W	SW	Wall Inlet (Wall Corner)	White	3 x 2-1/2	8	20	Yes
SW-100-W	SW	Wall Inlet (Wall Corner)	White	4 x 2-3/4	8-3/4	10	Yes
SW-140-W	SW	Wall Inlet (Wall Corner)	White	5-1/2 x 3	11	5	Yes



**SlimDuct SP Series Soffit Inlets**

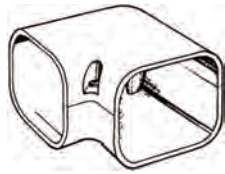
PART NO	SERIES	FITTING TYPE	COLOR	NOMINAL CROSS SECTION (IN)	NOMINAL LENGTH (IN)	CASE QTY	CASE REQ
SP-77-B	SP	Soffit Inlet (Ceiling Cap)	Brown	3 x 2-1/2	2-3/4	20	Yes
SP-100-B	SP	Soffit Inlet (Ceiling Cap)	Brown	4 x 2-3/4	2-3/4	20	Yes
SP-140-B	SP	Soffit Inlet (Ceiling Cap)	Brown	5-1/2 x 3	2-3/4	20	Yes
SP-77-I	SP	Soffit Inlet (Ceiling Cap)	Ivory	3 x 2-1/2	2-3/4	20	Yes
SP-100-I	SP	Soffit Inlet (Ceiling Cap)	Ivory	4 x 2-3/4	2-3/4	20	Yes
SP-140-I	SP	Soffit Inlet (Ceiling Cap)	Ivory	5-1/2 x 3	2-3/4	20	Yes
SP-77-W	SP	Soffit Inlet (Ceiling Cap)	White	3 x 2-1/2	2-3/4	20	Yes
SP-100-W	SP	Soffit Inlet (Ceiling Cap)	White	4 x 2-3/4	2-3/4	20	Yes
SP-140-W	SP	Soffit Inlet (Ceiling Cap)	White	5-1/2 x 3	2-3/4	20	Yes



**SlimDuct SEN Series End Fittings**

PART NO	SERIES	FITTING TYPE	COLOR	NOMINAL CROSS SECTION (IN)	NOMINAL LENGTH (IN)	CASE QTY	CASE REQ
SEN-77-B	SEN	End Fitting (End Cover)	Brown	3 x 2-1/2	5-1/2	10	Yes
SEN-100-B	SEN	End Fitting (End Cover)	Brown	4 x 2-3/4	6-1/2	20	Yes
SEN-140-B	SEN	End Fitting (End Cover)	Brown	5-1/2 x 3	9	20	Yes
SEN-77-I	SEN	End Fitting (End Cover)	Ivory	3 x 2-1/2	5-1/2	10	Yes
SEN-100-I	SEN	End Fitting (End Cover)	Ivory	4 x 2-3/4	6-1/2	20	Yes
SEN-140-I	SEN	End Fitting (End Cover)	Ivory	5-1/2 x 3	9	20	Yes
SEN-77-W	SEN	End Fitting (End Cover)	White	3 x 2-1/2	5-1/2	10	Yes
SEN-100-W	SEN	End Fitting (End Cover)	White	4 x 2-3/4	6-1/2	20	Yes
SEN-140-W	SEN	End Fitting (End Cover)	White	5-1/2 x 3	9	20	Yes

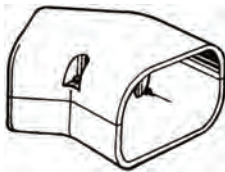
**SLIMDUCT LINESET DUCTING SYSTEM**



**SlimDuct SK Series 90 Degree Flat Elbows**

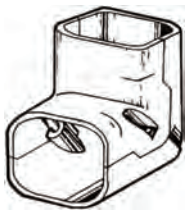
**SLIMDUCT**

PART NO	SERIES	FITTING TYPE	COLOR	NOMINAL CROSS SECTION (IN)	NOMINAL LENGTH (IN)	CASE QTY	CASE REQ
SK-77-B	SK	Flat Elbow - 90°	Brown	3 x 2-1/2	5	20	Yes
SK-100-B	SK	Flat Elbow - 90°	Brown	4 x 2-3/4	6	10	Yes
SK-77-I	SK	Flat Elbow - 90°	Ivory	3 x 2-1/2	5	20	Yes
SK-100-I	SK	Flat Elbow - 90°	Ivory	4 x 2-3/4	6	10	Yes
SK-140-I	SK	Flat Elbow - 90°	Ivory	5-1/2 x 3	7-1/2	20	Yes
SK-140-W	SK	Flat Elbow - 90°	Ivory	5-1/2 x 3	7-1/2	20	Yes
SK-140-B	SK	Flat Elbow - 90°	Ivory	5-1/2 x 3	7-1/2	20	Yes
SK-77-W	SK	Flat Elbow - 90°	White	3 x 2-1/2	5	20	Yes
SK-100-W	SK	Flat Elbow - 90°	White	4 x 2-3/4	6	10	Yes



**SlimDuct SKF Series 45 Degree Flat Elbows**

PART NO	SERIES	FITTING TYPE	COLOR	NOMINAL CROSS SECTION (IN)	NOMINAL LENGTH PER SIDE (IN)	CASE QTY	CASE REQ
SKF-77-B	SKF	Flat Elbow - 45°	Brown	3 x 2-1/2	2-1/2	20	Yes
SKF-100-B	SKF	Flat Elbow - 45°	Brown	4 x 2-3/4	3	10	Yes
SKF-140-B	SKF	Flat Elbow - 45°	Brown	5-1/2 x 3	3-5/8	20	Yes
SKF-77-I	SKF	Flat Elbow - 45°	Ivory	3 x 2-1/2	2-1/2	20	Yes
SKF-100-I	SKF	Flat Elbow - 45°	Ivory	4 x 2-3/4	3	10	Yes
SKF-140-I	SKF	Flat Elbow - 45°	Ivory	5-1/2 x 3	3-5/8	20	Yes
SKF-77-W	SKF	Flat Elbow - 45°	White	3 x 2-1/2	2-1/2	20	Yes
SKF-100-W	SKF	Flat Elbow - 45°	White	4 x 2-3/4	3	10	Yes
SKF-140-W	SKF	Flat Elbow - 45°	White	5-1/2 x 3	3-5/8	20	Yes



**SlimDuct SC Series 90 Degree Vertical Elbows**

PART NO	SERIES	FITTING TYPE	COLOR	NOMINAL CROSS SECTION (IN)	NOMINAL LENGTH PER SIDE (IN)	CASE QTY	CASE REQ
SC-77-B	SC	Vertical Elbow - 90°	Brown	3 x 2-1/2	4	20	Yes
SC-100-B	SC	Vertical Elbow - 90°	Brown	4 x 2-3/4	4-1/2	10	Yes
SC-140-B	SC	Vertical Elbow - 90°	Brown	5-1/2 x 3	5	20	Yes
SC-77-I	SC	Vertical Elbow - 90°	Ivory	3 x 2-1/2	4	20	Yes
SC-100-I	SC	Vertical Elbow - 90°	Ivory	4 x 2-3/4	4-1/2	10	Yes
SC-140-I	SC	Vertical Elbow - 90°	Ivory	5-1/2 x 3	5	20	Yes
SC-77-W	SC	Vertical Elbow - 90°	White	3 x 2-1/2	4	20	Yes
SC-100-W	SC	Vertical Elbow - 90°	White	4 x 2-3/4	4-1/2	10	Yes
SC-140-W	SC	Vertical Elbow - 90°	White	5-1/2 x 3	5	20	Yes



**SlimDuct SCF Series 45 Degree Vertical Elbows**

PART NO	SERIES	FITTING TYPE	COLOR	NOMINAL CROSS SECTION (IN)	NOMINAL LENGTH PER SIDE (IN)	CASE QTY	CASE REQ
SCF-77-B	SCF	Vertical Elbow - 45°	Brown	3 x 2-1/2	2-13/32	20	Yes
SCF-100-B	SCF	Vertical Elbow - 45°	Brown	4 x 2-3/4	3-1/2	10	Yes
SCF-140-B	SCF	Vertical Elbow - 45°	Brown	5-1/2 x 3	2-5/8	20	Yes
SCF-77-I	SCF	Vertical Elbow - 45°	Ivory	3 x 2-1/2	2-13/32	20	Yes
SCF-100-I	SCF	Vertical Elbow - 45°	Ivory	4 x 2-3/4	3-1/2	10	Yes
SCF-140-I	SCF	Vertical Elbow - 45°	Ivory	5-1/2 x 3	2-5/8	20	Yes
SCF-77-W	SCF	Vertical Elbow - 45°	White	3 x 2-1/2	2-13/32	20	Yes
SCF-100-W	SCF	Vertical Elbow - 45°	White	4 x 2-3/4	3-1/2	10	Yes
SCF-140-W	SCF	Vertical Elbow - 45°	White	5-1/2 x 3	2-5/8	20	Yes

**SLIMDUCT LINESET DUCTING SYSTEM**



**SlimDuct SF Series Flexible Elbows**

**SLIMDUCT**

PART NO	SERIES	FITTING TYPE	COLOR	NOMINAL CROSS SECTION (IN)	NOMINAL LENGTH (IN)	CASE QTY	CASE REQ
SF-77-500-B	SF	Flexible Elbow	Brown	3 x 2-1/2	19-1/2	20	Yes
SF-77-500-I	SF	Flexible Elbow	Ivory	3 x 2-1/2	19-1/2	20	Yes
SF-77-1000-I	SF	Flexible Elbow	Ivory	4 x 2-3/4	40-1/2	20	Yes
SF-100-800-I	SF	Flexible Elbow	Ivory	4 x 2-3/4	31-1/2	20	Yes
SF-140-800-I	SF	Flexible Elbow	Ivory	5-1/2 x 3	31-1/2	20	Yes
SF-77-500-W	SF	Flexible Elbow	White	3 x 2-1/2	19-1/2	20	Yes
SF-100-800-W	SF	Flexible Elbow	White	4 x 2-3/4	31-1/2	20	Yes



**SlimDuct SFJ Series Flexible Adapters**

PART NO	SERIES	FITTING TYPE	COLOR	NOMINAL CROSS SECTION (IN)	NOMINAL LENGTH (IN)	CASE QTY	CASE REQ
SFJ-77-B	SFJ	Flexible Adapter	Brown	3 x 2-1/2	1-3/8	20	Yes
SFJ-100-B	SFJ	Flexible Adapter	Brown	4 x 2-3/4	1-1/2	20	Yes
SFJ-77-I	SFJ	Flexible Adapter	Ivory	3 x 2-1/2	1-3/8	20	Yes
SFJ-100-I	SFJ	Flexible Adapter	Ivory	4 x 2-3/4	1-1/2	20	Yes
SFJ-77-W	SFJ	Flexible Adapter	White	3 x 2-1/2	1-3/8	20	Yes
SFJ-100-W	SFJ	Flexible Adapter	White	4 x 2-3/4	1-1/2	20	Yes

**CONDENSER WALL BRACKETS FOR MINI-SPLITS**



**SLIMDUCT**

PART NO	OVERALL DEPTH (IN)	OVERALL HEIGHT (IN)	OVERALL WIDTH (IN)	WEIGHT CAPACITY (LBS)
WBB-130	15	14-3/4	31-1/2	130
WBB-200	16-1/2	15	31-1/2	200

**SCREWS**



**Drilltip Sheet Metal Screws**



PART NO	SCREW SIZE	LENGTH (IN)	THREADS PER INCH	HEAD TYPE	HEAD SIZE (IN)	TYPE OF SCREW TIP	CHUCK INCLUDED	FINISH	QTY PER PACK
86-11204-500PK	8	1/2	18	Slotted Hex	1/4	Drill	No	Clear Bright Zinc	500
86-11206-MPK	8	1/2	18	Slotted Hex	1/4	Drill	No	Clear Bright Zinc	1000
86-11224-500PK	8	3/4	18	Slotted Hex	1/4	Drill	No	Clear Bright Zinc	500
86-11226-MPK	8	3/4	18	Slotted Hex	1/4	Drill	No	Clear Bright Zinc	1000
86-11236-500PK	8	1	18	Slotted Hex	1/4	Drill	No	Clear Bright Zinc	500
86-11260-500PK	10	1/2	16	Slotted Hex	5/16	Drill	No	Clear Bright Zinc	500
86-11268-500PK	10	3/4	16	Slotted Hex	5/16	Drill	No	Clear Bright Zinc	500



**Sharp Point Sheet Metal Screws**



PART NO	SCREW SIZE	LENGTH (IN)	THREADS PER INCH	HEAD TYPE	HEAD SIZE (IN)	TYPE OF SCREW TIP	CHUCK INCLUDED	FINISH	QTY PER PACK
86-11006-MPK	7	1/2	16	Slotted Hex	1/4	Sharp Point	No	Clear Bright Zinc	1000
86-11016-MPK	8	1/2	15	Slotted Hex	1/4	Sharp Point	No	Clear Bright Zinc	1000
86-11024-500PK	8	3/4	15	Slotted Hex	1/4	Sharp Point	No	Clear Bright Zinc	500
86-11026-MPK	8	3/4	15	Slotted Hex	1/4	Sharp Point	No	Clear Bright Zinc	1000
86-11034-500PK	8	1	15	Slotted Hex	1/4	Sharp Point	No	Clear Bright Zinc	500
86-11050-250PK	8	1-1/2	15	Slotted Hex	1/4	Sharp Point	No	Clear Bright Zinc	250
86-11060-250PK	8	2	15	Slotted Hex	1/4	Sharp Point	No	Clear Bright Zinc	250
86-11074-MPK	10	1/2	12	Slotted Hex	1/4	Sharp Point	No	Clear Bright Zinc	1000
86-11082-MPK	10	3/4	12	Slotted Hex	1/4	Sharp Point	No	Clear Bright Zinc	1000
86-11088-500PK	10	1	12	Slotted Hex	1/4	Sharp Point	No	Clear Bright Zinc	500



**Sharp Point Sheet Metal Screws w/Drive Chuck**



Includes a 1/4 in. magnetic hex chuck.

PART NO	SCREW SIZE	LENGTH (IN)	THREADS PER INCH	HEAD TYPE	HEAD SIZE (IN)	TYPE OF SCREW TIP	CHUCK INCLUDED	FINISH	QTY PER PACK
86-11007-MPK	7	1/2	16	Slotted Hex	1/4	Sharp Point	Yes	Clear Bright Zinc	1000
86-11017-MPK	8	1/2	15	Slotted Hex	1/4	Sharp Point	Yes	Clear Bright Zinc	1000
86-11027-MPK	8	3/4	15	Slotted Hex	1/4	Sharp Point	Yes	Clear Bright Zinc	1000
86-11035-500PK	8	1	15	Slotted Hex	1/4	Sharp Point	Yes	Clear Bright Zinc	500
86-11051-250PK	8	1-1/2	15	Slotted Hex	1/4	Sharp Point	Yes	Clear Bright Zinc	250
86-11061-250PK	8	2	15	Slotted Hex	1/4	Sharp Point	Yes	Clear Bright Zinc	250
86-11075-MPK	10	1/2	12	Slotted Hex	1/4	Sharp Point	Yes	Clear Bright Zinc	1000
86-11083-MPK	10	3/4	12	Slotted Hex	1/4	Sharp Point	Yes	Clear Bright Zinc	1000
86-11089-500PK	10	1	12	Slotted Hex	1/4	Sharp Point	Yes	Clear Bright Zinc	500



**White Register Screws**



PART NO	DESCRIPTION
86-10917-100PK	Register Screws - 8 in. x 1-1/2 in. x 1/4 in. - White (100/PK)

**OEM FURNACE DOOR INSERT/THUMBSCREW KIT**



This kit contains replacement screw inserts and thumbscrews for Rheem, Ruud, and WeatherKing furnace doors. Includes both 10/24 and 10/32 inserts and thumbscrews.

PART NO	DESCRIPTION
64-24081-81	Furnace Door Insert/Thumbscrew Kit

**INSTALLATION TOOL FOR OEM FURNACE DOOR INSERT/THUMBSCREW KIT**



PART NO	DESCRIPTION
64-24081-82	Installation Tool for Furnace Door Insert/Thumbscrew Kit

**DUCT TAPES – VENTURE TAPE**

**UL Listed Duct Tapes - Venture Tape**



**864031 (1581A) UL181A-P/UL181B-FX Printed Aluminum Foil Duct Tape**

Specially designed for taping joints and seams against moisture and vapor on foil jacketed insulation.

- Dead soft aluminum foil backing is extremely conformable to irregular surfaces
- Excellent adhesion and quick stick
- Complies with VOC requirements of SCAQMD Rule 1168
- Contributes toward satisfying EA Credit 1 (Optimize Energy Performance) and EQ Credit 4.1 (Low Emitting Materials, Adhesives & Sealants) under LEED

PART NO	THICKNESS (MILS)	WIDTH (IN)	ROLL LENGTH (YDS)	COLOR	BACKING	ADHESIVE	PRINTED	AGENCY CERT	SMOKE DEVELOPED UL723 TEST	FLAME SPREAD UL723 TEST	SERVICE TEMP RANGE (°F)	CASE QTY	CASE REQ
864031	4.0	2-1/2	60	Aluminum	Foil	Acrylic Base	Yes	UL listed UL181A-P, UL181B-FX	10.5	20	10 to 350	20	Yes



**864034 (1599B) UL181B-FX Printed Flexible Duct Closure Tape**

UV resistant biaxially oriented polypropylene (BOPP) tape coated with a Venture's CW® cold weather solvent acrylic adhesive. Hand tearable, thinner and tougher than traditional duct tapes, Venture 1599B lasts longer and will not delaminate with age. Provides easy application, superior performance, and durability over a wide range of temperatures and environments - including high heat desert conditions.

- High performance flexible duct closure tape performs well over a wide temperature range
- Venture CW® all weather acrylic adhesive applies easily at temperatures as cold as -35°F
- Ideal for use on metal and metal connections
- Higher adhesion and tack than traditional cloth duct tapes
- Excels in high heat and humidity conditions

PART NO	THICKNESS (MILS)	WIDTH (IN)	ROLL LENGTH (YDS)	COLOR	BACKING	ADHESIVE	PRINTED	AGENCY CERT	SMOKE DEVELOPED UL723 TEST	FLAME SPREAD UL723 TEST	SERVICE TEMP RANGE (°F)	CASE QTY	CASE REQ
864034	3.0	2	120	Silver	BOPP (Biaxially oriented polypropylene)	Acrylic Base	Yes	UL listed UL181B-FX	25	50	-35 to 260	24	Yes

**DUCT TAPES – VENTURE TAPE**

**UL Classified Duct Tapes – Venture Tape**



**864030 (3520CW) HVAC Aluminum Foil Tape**

Annealed aluminum foil coated with Venture's CW® cold weather solvent acrylic pressure sensitive adhesive. The malleable foil applies easily to both fibrous and sheet metal ducts and conforms to irregular surfaces. Excels in demanding temperature and humidity applications and provides superior performance and durability over a wide range of environmental conditions.

- Specifically designed for cold weather conditions; also excels in high heat and humidity conditions
- Specifically designed for sealing sheet metal ducts and metal duct connections
- Hand tearable allows for easy installation

PART NO	THICKNESS (MILS)	WIDTH (IN)	ROLL LENGTH (YDS)	COLOR	BACKING	ADHESIVE	PRINTED	AGENCY CERT	SMOKE DEVELOPED UL723 TEST	FLAME SPREAD UL723 TEST	SERVICE TEMP RANGE (°F)	CASE QTY	CASE REQ
864030	3.7	3	50	Aluminum	Foil	Acrylic Base	No	UL classified UL723	5	10	-35 to 260	16	Yes



**864033 (1525CW) FSK Facing Tape**

Aluminum foil/scrim/kraft (FSK) lamination coated with Venture's CW® cold weather solvent acrylic pressure sensitive adhesive. Versatile FSK applies easily to both fibrous and sheet metal ducts and easily conforms to irregular surfaces. Excels in demanding temperature and humidity applications and provides superior performance and durability over a wide range of environmental conditions.

- Specifically designed for cold weather conditions; also excels in high heat and humidity conditions
- Tri-directionally reinforced 2 x 3 squares per inch fiberglass scrim
- High performance insulation tape is ideal for use as a vapor seal for reinforced fiberglass or mineral wool thermal insulation
- Hand tearable allows for easy installation

PART NO	THICKNESS (MILS)	WIDTH (IN)	ROLL LENGTH (YDS)	COLOR	BACKING	ADHESIVE	PRINTED	AGENCY CERT	SMOKE DEVELOPED UL723 TEST	FLAME SPREAD UL723 TEST	SERVICE TEMP RANGE (°F)	CASE QTY	CASE REQ
864033	6.5	3	50	Aluminum	Reinforced Fiberglass Scrim	Acrylic Base	No	UL classified UL723	5	10	-35 to 260	16	Yes

**Cloth Duct Tapes – Venture Tape**



**864032 (1556) Pro Grade Waterproof Cloth Duct Tape**

A high strength, premium quality polyethylene coated cotton cloth tape coated with an aggressive, high tack, natural rubber pressure sensitive adhesive system. Adheres well to sheet metal duct and conforms well to corners and irregular surfaces.

- Vapor sealing sheet metal ductwork and general purpose heavy duty service
- Also used for hanging poly sheeting

PART NO	THICKNESS (MILS)	WIDTH (IN)	ROLL LENGTH (YDS)	COLOR	BACKING	ADHESIVE	PRINTED	AGENCY CERT	SMOKE DEVELOPED UL723 TEST	FLAME SPREAD UL723 TEST	SERVICE TEMP RANGE (°F)	CASE QTY	CASE REQ
864032	12.0	2	60	Silver	Polyethylene Coated Cloth	Rubber Base	No	—	—	—	40 to 175	24	Yes

**DUCT TAPES – NASHUA**

**UL Listed Duct Tapes – Nashua**



**86-N324-P (324) UL181A-P/UL181B-FX Printed Aluminum Foil Ductboard Tape**

Recommended for use on UL listed fiberglass duct board and flexible duct systems in accordance with manufacturer's installation instructions.

- High performance aggressive acrylic adhesive
- Adhesive protected by a bleached kraft paper liner which also provides easy unwind
- Excellent adhesion to duct board
- Provides long-term anchorage and strong cohesive bond for long-term durability
- Superior adhesion even at extremely low or high temperatures
- Complies with VOC requirements of SCAQMD Rule 1168
- Contributes toward satisfying EA Credit 1 (Optimize Energy Performance) and EQ Credit 4.1 (Low Emitting Materials, Adhesives & Sealants) under LEED

PART NO	THICKNESS (MILS)	WIDTH (IN)	ROLL LENGTH (YDS)	COLOR	BACKING	ADHESIVE	PRINTED	AGENCY CERT	SMOKE DEVELOPED UL723 TEST	FLAME SPREAD UL723 TEST	SERVICE TEMP RANGE (°F)	CASE QTY	CASE REQ
86-N324-P	4.8	2-1/2	60	Aluminum	Foil w/Liner	Acrylic Base	Yes	UL listed UL181A-P, UL181B-FX	0	3	-20 to 325	16	Yes



**86-N557-P (557) 181B-FX Printed Flexible Duct Closure Tape**

Acts as a superior closure system for use with flexible air duct and air connectors, and is recommended for use on UL listed flexible air ducts in accordance with manufacturer's installation instructions. Tape is ideal for heating, air conditioning, ventilating, and refrigeration applications.

- Excellent adhesion and shear (holding power) performance
- Superior quality, performance, and tensile strength
- Excellent resistance to mold growth, humidity, flame spread, smoke generation, and the effects of high temperature
- Printed for easy identification
- Complies with VOC requirements of SCAQMD Rule 1168
- Contributes toward satisfying EA Credit 1 (Optimize Energy Performance) and EQ Credit 4.1 (Low Emitting Materials, Adhesives & Sealants) under LEED

PART NO	THICKNESS (MILS)	WIDTH (IN)	ROLL LENGTH (YDS)	COLOR	BACKING	ADHESIVE	PRINTED	AGENCY CERT	SMOKE DEVELOPED UL723 TEST	FLAME SPREAD UL723 TEST	MAX TEMP (°F)	CASE QTY	CASE REQ
86-N557-P	14.0	2	60	Silver	Polyethylene Coated Cloth	Rubber Base	Yes	UL listed UL181B-FX	15	15	200	36	Yes

**UL Classified Duct Tapes – Nashua**



**86-N322 & 86-N322-3 (322 & 322-3) HVAC Aluminum Foil Tapes**

Specially designed for taping joints and seams against moisture and vapor on foil jacketed insulation.

- Dead soft aluminum foil backing is extremely conformable to irregular surfaces
- Excellent adhesion and quick stick
- Complies with VOC requirements of SCAQMD Rule 1168
- Contributes toward satisfying EA Credit 1 (Optimize Energy Performance) and EQ Credit 4.1 (Low Emitting Materials, Adhesives & Sealants) under LEED

PART NO	THICKNESS (MILS)	WIDTH (IN)	ROLL LENGTH (YDS)	COLOR	BACKING	ADHESIVE	PRINTED	AGENCY CERT	SMOKE DEVELOPED UL723 TEST	FLAME SPREAD UL723 TEST	MAX TEMP (°F)	CASE QTY	CASE REQ
86-N322	5.0	2	50	Aluminum	Foil w/Liner	Rubber Base	No	UL classified UL723	25	10	200	24	Yes
86-N322-3	5.0	3	50	Aluminum	Foil w/Liner	Rubber Base	No	UL classified UL723	25	10	200	16	Yes



**DUCT TAPES – NASHUA**

**FSK Facing Tapes – Nashua**



**86-NFSK (FSK) FSK Facing Taping**

For sealing and patching FSK duct boards and insulation. Extra-strength seal to maintain vapor barrier integrity.

- Aluminum foil FSK backing with a specially formulated adhesive interleaved with a release liner
- Specially designed to meet high strength, tear resistant sealing tape requirements
- Provides excellent adhesion to substrate over a wide temperature range
- Diamond pattern matches most FSK boards and blankets
- Complies with VOC requirements of SCAQMD Rule 1168
- Contributes toward satisfying EA Credit 1 (Optimize Energy Performance) and EQ Credit 4.1 (Low Emitting Materials, Adhesives & Sealants) under LEED

PART NO	THICKNESS (MILS)	WIDTH (IN)	ROLL LENGTH (YDS)	COLOR	BACKING	ADHESIVE	PRINTED	AGENCY CERT	SMOKE DEVELOPED UL723 TEST	FLAME SPREAD UL723 TEST	MAX TEMP (°F)	CASE QTY	CASE REQ
86-NFSK	8.0	3	50	Aluminum	Foil, Tri-Directional Base	Rubber	No	—	5	10	200	16	Yes

**Cloth Duct Tapes – Nashua**

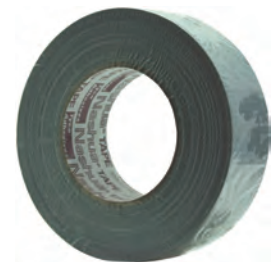


**86-N345 & 86-N345P (345 & 345 Printed) Premium Cloth Duct Tape**

For heating, air conditioning, ventilating, and refrigeration applications.

- High quality polyethylene coated cloth
- Adheres aggressively to many different types of surfaces
- Excellent performance over a wide temperature range
- Tears straight, hangs straight, and resists curling
- Contributes toward satisfying EQ Credit 4.1 (Low Emitting Materials Adhesives & Sealants) under LEED

PART NO	THICKNESS (MILS)	WIDTH (IN)	ROLL LENGTH (YDS)	COLOR	BACKING	ADHESIVE	PRINTED	AGENCY CERT	SMOKE DEVELOPED UL723 TEST	FLAME SPREAD UL723 TEST	MAX TEMP (°F)	CASE QTY	CASE REQ
86-N345	12.0	2	60	Silver	Polyethylene Coated Cloth	Rubber Base	No	—	20	25	200	24	Yes
86-N345-P	12.0	2	60	Silver	Polyethylene Coated Cloth	Rubber Base	Yes	—	20	25	200	24	Yes



**86-N396 (396) Multi-Purpose Cloth Duct Tape**

For home and general repair, bundling, patching, and mending.

- Versatile polyethylene coated cloth tape
- Conforms well to irregular surfaces
- Adheres to a wide variety of substrates
- Tears straight, hangs straight, and curl resistant
- Contributes toward satisfying EQ Credit 4.1 (Low Emitting Materials Adhesives & Sealants) under LEED

PART NO	THICKNESS (MILS)	WIDTH (IN)	ROLL LENGTH (YDS)	COLOR	BACKING	ADHESIVE	PRINTED	AGENCY CERT	SMOKE DEVELOPED UL723 TEST	FLAME SPREAD UL723 TEST	MAX TEMP (°F)	CASE QTY	CASE REQ
86-N396	10.0	2	60	Silver	Polyethylene Coated Cloth	Rubber Base	No	—	—	—	200	24	Yes

**DUCT TAPES – NASHUA**

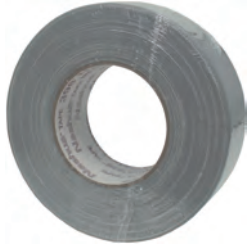
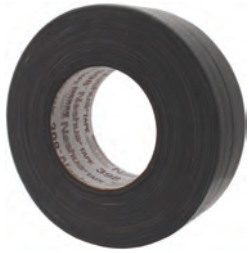
**Cloth Duct Tapes – Nashua**



**86-N398, 86-N398-B & 86-N398-P (398 Silver, 398 Black, and 398 Silver Printed) Premium Cloth Duct Tape**

For home and general repair, HVAC duct and equipment applications, asbestos removal and PE hanging.

- High quality polyethylene coated cloth
- Conforms well to irregular surfaces
- Adheres to a wide variety of substrates
- Tears straight, hangs straight, and curl resistant
- Easy unwind
- Contributes toward satisfying EQ Credit 4.1 (Low Emitting Materials Adhesives & Sealants) under LEED



PART NO	THICKNESS (MILS)	WIDTH (IN)	ROLL LENGTH (YDS)	COLOR	BACKING	ADHESIVE	PRINTED	AGENCY CERT	SMOKE DEVELOPED UL723 TEST	FLAME SPREAD UL723 TEST	MAX TEMP (°F)	CASE QTY	CASE REQ
86-N398	11.0	2	60	Silver	Polyethylene Coated Cloth	Rubber Base	No	—	10	10	200	24	Yes
86-N398-P	11.0	2	60	Silver	Polyethylene Coated Cloth	Rubber Base	Yes	—	10	10	200	24	Yes
86-N398-B	11.0	2	60	Black	Polyethylene Coated Cloth	Rubber Base	No	—	10	10	200	24	Yes

**86-N357 & 86-N357-B (357 Silver & 357 Black) Premium Cloth Duct Tape**

For heating, air conditioning, ventilating, and refrigeration applications. Superior tensile strength.

- Clean release; resists delaminating
- Conforms to a wide variety of surfaces
- Outstanding performance over a wide temperature range
- Tears straight, hangs straight, and resists curling
- Preferred tape of professional contractors who demand a consistent, trouble-free product
- Contributes toward satisfying EQ Credit 4.1 (Low Emitting Materials Adhesives & Sealants) under LEED



PART NO	THICKNESS (MILS)	WIDTH (IN)	ROLL LENGTH (YDS)	COLOR	BACKING	ADHESIVE	PRINTED	AGENCY CERT	SMOKE DEVELOPED UL723 TEST	FLAME SPREAD UL723 TEST	MAX TEMP (°F)	CASE QTY	CASE REQ
86-N357	13.0	2	60	Silver	Polyethylene Coated Cloth	Rubber Base	No	—	20	15	200	24	Yes
86-N357-B	13.0	2	60	Black	Polyethylene Coated Cloth	Rubber Base	No	—	20	15	200	24	Yes

**DUCT TAPES – POLYKEN**

**UL Listed Duct Tapes – Polyken**



**86-P339-P (339) UL181A/UL181B-FX Printed Foil Duct Tape**

Recommended for use on UL listed fiberglass duct board and flexible duct systems in accordance with manufacturer's installation instructions. Also ideal for permanent, flexible seals.

- High performance aggressive acrylic adhesive
- Adhesive protected by a bleached kraft paper liner which also provides easy unwind
- Excellent adhesion to duct board
- Provides long-term anchorage and strong cohesive bond for long-term durability
- Superior adhesion even at extremely low or high temperatures. Complies with VOC requirements of SCAQMD Rule 1168
- Contributes toward satisfying EA Credit 1 (Optimize Energy Performance) and EQ Credit 4.1 (Low Emitting Materials, Adhesives & Sealants) under LEED



PART NO	THICKNESS (MILS)	WIDTH (IN)	ROLL LENGTH (YDS)	COLOR	BACKING	ADHESIVE	PRINTED	AGENCY CERT	SMOKE DEVELOPED UL723 TEST	FLAME SPREAD UL723 TEST	SERVICE TEMP RANGE (°F)	CASE QTY	CASE REQ
86-P339-P	4.8	2-1/2	60	Aluminum	Foil w/Liner	Acrylic Base	Yes	UL listed UL181A-P, UL181B-FX	0	3	-20 to 325	16	Yes

**DUCT TAPES – POLYKEN**



**86-P557-P (557) UL181B-FX Printed Flexible Duct Closure Tape**

Acts as a superior closure system for use with flexible air duct and air connectors. Also recommended for use on UL listed flexible air ducts in accordance with manufacturer’s installation instructions.

- Excellent adhesion and shear (holding power) performance
- Superior quality, performance, and tensile strength
- Excellent resistance to mold growth, humidity, flame spread, smoke generation, and the effects of high temperature
- Printed for easy identification
- Complies with VOC requirements of SCAQMD Rule 1168
- Contributes toward satisfying EA Credit 1 (Optimize Energy Performance) and EQ Credit 4.1 (Low Emitting Materials, Adhesives & Sealants) under LEED

PART NO	THICKNESS (MILS)	WIDTH (IN)	ROLL LENGTH (YDS)	COLOR	BACKING	ADHESIVE	PRINTED	AGENCY CERT	SMOKE DEVELOPED UL723 TEST	FLAME SPREAD UL723 TEST	MAX TEMP (°F)	CASE QTY	CASE REQ
86-P557-P	14.0	2	60	Silver	Polyethylene Coated Cloth	Rubber Base	Yes	UL listed UL181B-FX	15	15	200	24	Yes

**UL Classified Duct Tapes – Polyken**



**86-P337 & 86-P337-3 (337 2 Inch & 337 3 Inch) Aluminum Foil Tape**

For taping joints and seams against moisture and vapor on foil jacketed insulation.

- High adhesion and quick stick
- Extremely conformable foil backing
- Matches aluminum foil-faced duct systems and insulation
- For use over a wide temperature range
- Complies with VOC requirements of SCAQMD Rule 1168
- Contributes toward satisfying EA Credit 1 (Optimize Energy Performance) and EQ Credit 4.1 (Low Emitting Materials, Adhesives & Sealants) under LEED

PART NO	THICKNESS (MILS)	WIDTH (IN)	ROLL LENGTH (YDS)	COLOR	BACKING	ADHESIVE	PRINTED	AGENCY CERT	SMOKE DEVELOPED UL723 TEST	FLAME SPREAD UL723 TEST	MAX TEMP (°F)	CASE QTY	CASE REQ
86-P337	3.7	2	50	Aluminum	Foil w/Liner	Rubber Base	No	UL classified UL723	5	10	200	24	Yes
86-P337-3	3.7	3	50	Aluminum	Foil w/Liner	Rubber Base	No	UL classified UL723	5	10	200	16	Yes

**FSK Facing Tapes – Polyken**



**86-P338 (338) FSK Facing Tape**

For sealing and patching FSK duct boards and insulation.

- Aluminum foil FSK backing with a specially formulated adhesive interleaved with a release liner
- Specially designed to meet high strength, tear resistant sealing tape requirements
- Provides excellent adhesion to substrate over a wide temperature range
- Diamond pattern matches most FSK inter-boards and blankets
- Complies with VOC requirements of SCAQMD Rule 1168
- Contributes toward satisfying EA Credit 1 (Optimize Energy Performance) and EQ Credit 4.1 (Low Emitting Materials, Adhesives & Sealants) under LEED

PART NO	THICKNESS (MILS)	WIDTH (IN)	ROLL LENGTH (YDS)	COLOR	BACKING	ADHESIVE	PRINTED	AGENCY CERT	SMOKE DEVELOPED UL723 TEST	FLAME SPREAD UL723 TEST	MAX TEMP (°F)	CASE QTY	CASE REQ
86-P338	8.0	3	50	Aluminum	Foil, Tri-Directional Fiberglass, Kraft Paper	Rubber Base	No	—	5	10	200	16	Yes

**DUCT TAPES – POLYKEN**

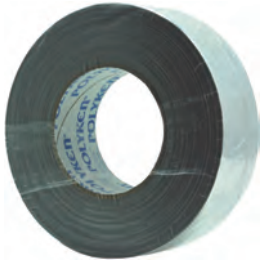


**Metalized Film Duct Tapes – Polyken**

**86-P251 (251) Metalized Film Duct Tape**

For sealing heating and air conditioning duct connections.

- Excellent tensile strength, adhesion, and tack properties
- Designed to match flexible ducts, insulation and other aluminum colored surfaces
- Extremely conformable
- Will not twist or curl during application
- Contributes toward satisfying EQ Credit 4.1 (Low Emitting Materials, Adhesives & Sealants) under LEED



PART NO	THICKNESS (MILS)	WIDTH (IN)	ROLL LENGTH (YDS)	COLOR	BACKING	ADHESIVE	PRINTED	AGENCY CERT	SMOKE DEVELOPED UL723 TEST	FLAME SPREAD UL723 TEST	MAX TEMP (°F)	CASE QTY	CASE REQ
86-P251	11.0	2	60	Metallic	Metalized Polyethylene Coated Cloth	Rubber Base	No	—	5	10	200	24	Yes

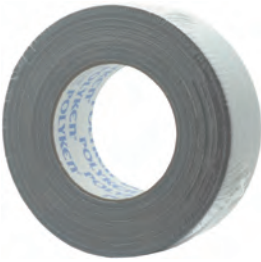
**Cloth Duct Tapes – Polyken**



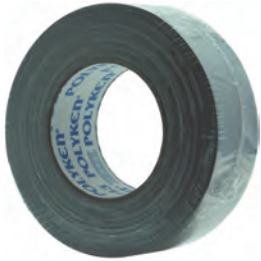
**86-243 & 86-243-B (243 Silver & 243 Black) Multi-Purpose Cloth Duct Tape**

For sealing standard duct work and superior performance on flex duct.

- Soft and conformable backing
- Provides high tack and quick grab
- Excellent tear characteristics
- High performance in cold temperatures
- Contributes toward satisfying EQ Credit 4.1 (Low Emitting Materials Adhesives & Sealants) under LEED



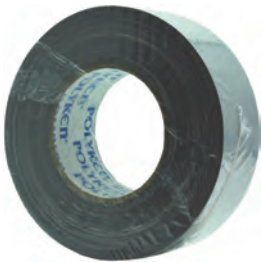
PART NO	THICKNESS (MILS)	WIDTH (IN)	ROLL LENGTH (YDS)	COLOR	BACKING	ADHESIVE	PRINTED	AGENCY CERT	SMOKE DEVELOPED UL723 TEST	FLAME SPREAD UL723 TEST	MAX TEMP (°F)	CASE QTY	CASE REQ
86-P243	10.0	2	60	Silver	Polyethylene Coated Cloth	Rubber Base	No	—	5	10	200	24	Yes
86-P243-B	11.0	2	60	Black	Polyethylene Coated Cloth	Rubber Base	No	—	5	10	200	24	Yes



**86-P227 (227) Contractor Grade Cloth Duct Tape**

For sealing metal duct work and fiberglass insulation, home and general repair.

- Bonds to all types of surfaces
- Easily applied
- Will not twist or curl
- Contributes toward satisfying EQ Credit 4.1 (Low Emitting Materials, Adhesives & Sealants) under LEED

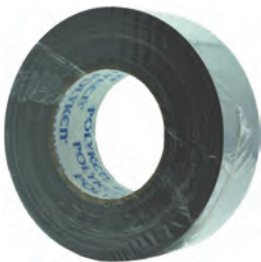


PART NO	THICKNESS (MILS)	WIDTH (IN)	ROLL LENGTH (YDS)	COLOR	BACKING	ADHESIVE	PRINTED	AGENCY CERT	SMOKE DEVELOPED UL723 TEST	FLAME SPREAD UL723 TEST	MAX TEMP (°F)	CASE QTY	CASE REQ
86-P227	11.0	2	60	Silver	Polyethylene Coated Cloth	Rubber Base	No	—	15	5	200	24	Yes

**86-P223 (223) Multi-Purpose Cloth Duct Tape**

For sealing metal duct work and fiberglass insulation.

- Good tensile strength
- Superior adhesion and tack
- Conformable and will not twist or curl during application
- Contributes toward satisfying EQ Credit 4.1 (Low Emitting Materials Adhesives & Sealants) under LEED



PART NO	THICKNESS (MILS)	WIDTH (IN)	ROLL LENGTH (YDS)	COLOR	BACKING	ADHESIVE	PRINTED	AGENCY CERT	SMOKE DEVELOPED UL723 TEST	FLAME SPREAD UL723 TEST	MAX TEMP (°F)	CASE QTY	CASE REQ
86-P223	10.0	2	60	Silver	Polyethylene Coated Cloth	Rubber Base	No	—	5	10	200	24	Yes

## DUCT TAPES – POLYKEN

### Waterproofing/Repair Duct Tapes – Polyken



#### 86-P360-17 & 86-P360-35 (360-17 & 360-35) Waterproofing/Repair Duct Tape

For indoor/outdoor sealing of low, medium, and high pressure HVAC systems (includes: sheet metal duct, fiberglass duct board, and flexible duct systems)

- Forms a permanent seal
- Heavy-duty all-weather foil
- Excellent adhesion to all surfaces
- Extremely conformable
- Paintable foil backing (use in place of caulk)
- Provides instant water-tight seal
- Non-staining adhesive
- Excellent resistance to cold, heat, water, and sunlight
- PE release liner provides ease of installation
- Complies with VOC requirements of SCAQMD Rule 1168
- Contributes toward satisfying EA Credit 1 (Optimize Energy Performance) and EQ Credit 4.1 (Low Emitting Materials, Adhesives & Sealants) under LEED

PART NO	THICKNESS (MILS)	WIDTH (IN)	ROLL LENGTH (FT)	COLOR	BACKING	ADHESIVE	PRINTED	AGENCY CERT	SMOKE DEVELOPED UL723 TEST	FLAME SPREAD UL723 TEST	MAX TEMP (°F)	CASE QTY	CASE REQ
86-P360-17	17.0	2	100	Aluminum	Foil	Rubber Base	No	—	0	5	200	24	Yes
86-P360-35	35.0	3	50	Aluminum	Foil	Rubber Base	No	—	—	—	300	16	Yes

## ELECTRICAL TAPES



### Electrical Tape (PVC)

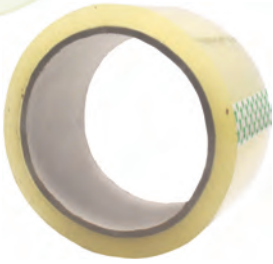
PART NO	THICKNESS (MILS)	WIDTH (IN)	ROLL LENGTH (FT)	COLOR	BACKING	ADHESIVE	AGENCY CERT	ADHESION TO STEEL PSTC-1 (OZ/IN)	ELONGATION (%)	INSULATION RATING (V)	TENSILE STRENGTH (PSI)	CASE QTY	CASE REQ
777ID	7.0	3/4	60	Black	PVC	Rubber Base	UL listed UL510	20	200	600	17	10	Yes



### Electrical Tape (Polyethylene)

PART NO	THICKNESS (MILS)	WIDTH (IN)	ROLL LENGTH (FT)	COLOR	BACKING	ADHESIVE	AGENCY CERT	ADHESION TO STEEL PSTC-1 (OZ/IN)	ELONGATION (%)	INSULATION RATING (V)	TENSILE STRENGTH (PSI)	CASE QTY	CASE REQ
86-P821	7.8	3/4	60	Black	Polyethylene	Rubber Base	UL listed UL510	30	375	7800	41	96	Yes

**TAPES**

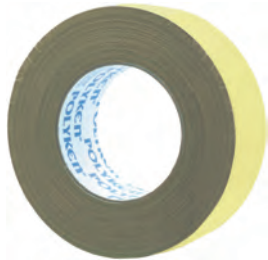


**864035 (200) Carton Sealing Tape**



Specifically designed for carton sealing and corrugated packaging applications. Strong, thin polypropylene film tape coated with a high grade natural rubber pressure sensitive adhesive; excellent resistance to hot and cold environments and moisture.

PART NO	THICKNESS (MILS)	WIDTH (IN)	ROLL LENGTH (YDS)	COLOR	BACKING	ADHESIVE	SERVICE TEMP RANGE (°F)	CASE QTY	CASE REQ
864035	2.3	2	55	Clear	Polypropylene Film	Rubber Base	-10 to 212	36	Yes



**86-826-Y (826 Yellow) Corrosion Control Tape**



Designed for interior and exterior corrosion protection of smaller diameter pipe.

- Excellent conformability to irregular surfaces
- High dielectric strength
- Moisture resistant
- Tough, pressure sensitive adhesive system unaffected by cold

PART NO	THICKNESS (MILS)	WIDTH (IN)	ROLL LENGTH (FT)	COLOR	BACKING	ADHESIVE	SERVICE TEMP RANGE (°F)	CASE QTY	CASE REQ
86-826-Y	12.0	2	100	Yellow	Polyethylene Film	Rubber Base	-30 to 140	24	Yes

**MASTIC**



PROTECH 181 series mastics are professional grade water based duct sealants. They can be used for sealing metal to metal joints and for sealing rivets, screws and other fastening devices.



- Water based
- Nonflammable
- Indoor/Outdoor
- Mildew resistant
- Suitable for low to high velocity systems
- For discount, order in pallet quantity; add -P suffix to part number for case quantity of 192

PART NO	TYPE	COLOR	AGENCY RATINGS	APPLICATIONS	APPLICATIONS TEMPERATURE (°F)	CONTAINER SIZE (GAL)	CONTAINER TYPE	CASE QTY	CASE REQ
670020	All Purpose Fibered	Off-White	UL181A-M, UL181B-M	Sheet Metal, Rigid Fiberglass, Flex Duct	35 - 115	1	Pail	4	Yes
670021	Smooth	Gray	UL181B-M	Sheet Metal, Flex Duct	35 - 115	1	Pail	4	Yes
670022	Fibered	Gray	UL181B-M	Sheet Metal, Flex Duct	35 - 115	1	Pail	4	Yes
670023	Textured	Off-White	UL181B-M	Sheet Metal, Flex Duct	35 - 115	1	Pail	4	Yes

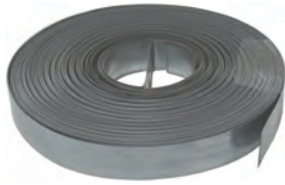
**CHIP BRUSHES**



- 100% natural bristles; wood handle
- Poly sleeve over bristles
- Inexpensive; use once and throw away
- Excellent for applying duct adhesive

PART NO	DESCRIPTION	CASE QTY	CASE REQ
864020	Chip Brush - 1/2 in. Wide	36	Yes
864021	Chip Brush - 1 in. Wide	36	Yes
864022	Chip Brush - 1-1/2 in. Wide	36	Yes
864023	Chip Brush - 2 in. Wide	24	Yes
864024	Chip Brush - 2-1/2 in. Wide	12	Yes
864025	Chip Brush - 3 in. Wide	12	Yes

## DUCT STRAP AND HANGING WIRE



### Duct Strap – Metal

PART NO	WIDTH (IN)	THICKNESS (GAUGE)	MATERIAL	PACKAGE TYPE	ROLL LENGTH (FT)
640012	1	30	Galvanized Steel	Roll w/Cardboard dispenser	100
640011	1	26	Galvanized Steel	Roll w/Cardboard dispenser	100
640015	1	22	Galvanized Steel	Roll w/Cardboard dispenser	100
640013	1-1/2	30	Galvanized Steel	Roll w/Cardboard dispenser	100
640014	1-1/2	26	Galvanized Steel	Roll w/Cardboard dispenser	100



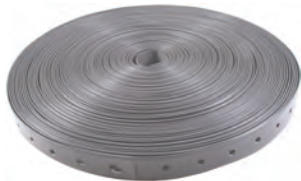
### Duct Strap – Poly

PART NO	WIDTH (IN)	COLOR	MATERIAL	PACKAGE TYPE	ROLL LENGTH (YDS)	CASE QTY	CASE REQ
640020	1-3/4	Silver	Polypropylene mesh	Roll	100	24	Yes
86-P50	1-3/4	Black	Polyethylene mesh	Roll	100	24	Yes
640010	1-3/4	Black	Polypropylene mesh	Roll	100	24	Yes
640021	3	Silver	Polypropylene mesh	Roll	100	8	Yes
640022	3	Black	Polypropylene mesh	Roll	100	8	Yes



### Hanger Strap – Iron

PART NO	WIDTH (IN)	THICKNESS (GAUGE)	MATERIAL	PACKAGE TYPE	ROLL LENGTH (FT)	CASE QTY	CASE REQ
86-25172-04	3/4	28	Galvanized Steel	Roll	10	50	Yes
640016	3/4	28	Galvanized Steel	Roll	100	6	Yes



### Hanger Strap – Poly

PART NO	WIDTH (IN)	THICKNESS (IN)	MATERIAL	PACKAGE TYPE	ROLL LENGTH (FT)	CASE QTY	CASE REQ
86-25172-03	3/4	3/64	Polymeric	Roll	100	20	Yes



### Hanging Wire

PART NO	THICKNESS (GAUGE)	MATERIAL	PACKAGE TYPE	ROLL LENGTH (FT)	ROLL WEIGHT (LBS)	CASE QTY	CASE REQ
86-25172-02	18	Steel	Roll	330	2	16	Yes
86-25172-01	18	Galvanized Steel	Roll	330	2	16	Yes
640017	18	Galvanized Steel	Roll	830	5	16	Yes

## CABLE/DUCT TIES – NYLON



PART NO	LENGTH (IN)	THICKNESS (IN)	APPROX MAX DIAMETER (IN)	COLOR	MATERIAL	UV RESISTANT	PACKAGE TYPE	QTY PER PACK
640007	24	3/32	7	Natural	Nylon	—	Bag	50
86-14195-50PK	36	5/64	11	Natural	Nylon	—	Bag	50
640008	36	3/32	11	Natural	Nylon	—	Bag	50
640009	48	3/32	14-1/2	Natural	Nylon	—	Bag	50
86-14197-50PK	48	5/64	14-1/2	Natural	Nylon	—	Bag	50

**WIRE & CABLE TIES**

**Wire & Cable Ties – Nylon**



PART NO	LENGTH (IN)	THICKNESS (IN)	APPROX MAX DIAMETER (IN)	COLOR	MATERIAL	UV RESISTANT	PACKAGE TYPE	QTY PER PACK
455063	4-1/4	3/64	1	Natural	Nylon	—	Bag	100
455064	4-1/4	3/64	1	Black	Nylon	Yes	Bag	100
455065	5-3/4	3/64	1-1/2	Natural	Nylon	—	Bag	100
455066	5-3/4	3/64	1-1/2	Black	Nylon	Yes	Bag	100
455067	7-1/2	1/16	2	Natural	Nylon	—	Bag	100
455068	7-1/2	1/16	2	Black	Nylon	Yes	Bag	100
455069	11-1/4	1/16	3-1/4	Natural	Nylon	—	Bag	100
455070	11-1/4	1/16	3-1/4	Black	Nylon	Yes	Bag	100
455071	14-1/4	1/16	4	Natural	Nylon	—	Bag	100
455072	14-1/4	1/16	4	Black	Nylon	Yes	Bag	100
640002	11	1/16	3-1/8	Natural	Nylon	—	Bag	100
640003	15	1/16	4-3/8	Natural	Nylon	—	Bag	100

**Wire & Cable Ties with Mounting Hole – Nylon**



PART NO	LENGTH (IN)	THICKNESS (IN)	APPROX MAX DIAMETER (IN)	COLOR	MATERIAL	UV RESISTANT	PACKAGE TYPE	QTY PER PACK
455073	8	3/64	2-1/4	Black	Nylon	Yes	Bag	100

**STAINLESS STEEL TIES**



PART NO	LENGTH (IN)	THICKNESS (GAUGE)	APPROX MAX DIAMETER (IN)	COLOR	MATERIAL	UV RESISTANT	PACKAGE TYPE	QTY PER PACK
455060	7-1/2	28	2-1/4	—	Stainless Steel	Yes	Bag	50
455061	14-1/2	28	4-1/2	—	Stainless Steel	Yes	Bag	50

**HOOK & LOOP TIE STRAPS**



PART NO	LENGTH (IN)	WIDTH (IN)	COLOR	PACK TYPE	QTY PER PACK
455028	12	3/4	Black	Blister Pack	6
455029	12	3/4	Yellow (Neon)	Blister Pack	6



**BRAZING & SOLDERING SUPPLIES**



**Brazing Rods & Flux**



**Brazing Rods – Stay-Silv 15**

- Recommended for joining copper to copper, copper to brass and brass to brass
- Standard of the industry
- Excellent for use where a close fit does not exist
- Excellent for situations where thermal expansion and service vibration are involved

PART NO	ROD SHAPE	ROD THICKNESS (IN)	ROD WIDTH (IN)	ROD LENGTH (IN)	FLUIDITY RATING	SOLIDUS TEMP (°F)	LIQUIDUS TEMP (°F)	REC JOINT CLEARANCE	SILVER (%)	QTY PER PACK
86-25254-06	Flat	.050	1/8	20	3	1190	1480	0.002 - 0.006	15	28

**Brazing Rods – Stay-Silv 6**

- Recommended for joining copper to copper, copper to brass and brass to brass
- Suited for use where a close-fit does not exist

PART NO	ROD SHAPE	ROD THICKNESS (IN)	ROD WIDTH (IN)	ROD LENGTH (IN)	FLUIDITY RATING	SOLIDUS TEMP (°F)	LIQUIDUS TEMP (°F)	REC JOINT CLEARANCE	SILVER (%)	QTY PER PACK
86-25254-14	Flat	.050	1/8	20	5	1190	1425	0.002 - 0.005	6	28

**Brazing Rods – Stay-Silv 5**

- Recommended for joining copper to copper, copper to brass and brass to brass
- Suited for use where a close-fit does not exist

PART NO	ROD SHAPE	ROD THICKNESS (IN)	ROD WIDTH (IN)	ROD LENGTH (IN)	FLUIDITY RATING	SOLIDUS TEMP (°F)	LIQUIDUS TEMP (°F)	REC JOINT CLEARANCE	SILVER (%)	QTY PER PACK
86-25254-13	Flat	.050	1/8	20	3	1190	1500	0.003 - 0.006	5	28

**Brazing Rods – Harris 0**

- Recommended for joining copper to copper, copper to brass and brass to brass
- Recommended for use where good fit-up exists and assemblies are not subject to excessive vibration or movement

PART NO	ROD SHAPE	ROD THICKNESS (IN)	ROD WIDTH (IN)	ROD LENGTH (IN)	FLUIDITY RATING	SOLIDUS TEMP (°F)	LIQUIDUS TEMP (°F)	REC JOINT CLEARANCE	SILVER (%)	QTY PER PACK
86-25254-12	Flat	.050	1/8	20	5	1310	1475	0.003 - 0.006	0	28

**Brazing Rods – Dynaflow**

- Recommended for joining copper to copper, copper to brass and brass to brass
- Low-cost alternative to Stay-Silv 15
- Melts and flows at temperatures close to Stay-Silv 15
- Comparable brazed mechanical properties to Stay-Silv 15

PART NO	ROD SHAPE	ROD THICKNESS (IN)	ROD WIDTH (IN)	ROD LENGTH (IN)	FLUIDITY RATING	SOLIDUS TEMP (°F)	LIQUIDUS TEMP (°F)	REC JOINT CLEARANCE	SILVER (%)	QTY PER PACK
86-25254-05	Flat	.050	1/8	20	3	1190	1465	0.003 - 0.006	6	28

**Brazing Rods – BLOCKADE**

- Recommended for joining copper to copper, copper to brass and brass to brass
- Low-cost alternative to silver-based alloys

PART NO	ROD SHAPE	ROD DIAMETER (IN)	ROD LENGTH (IN)	FLUIDITY RATING	SOLIDUS TEMP (°F)	LIQUIDUS TEMP (°F)	REC JOINT CLEARANCE	SILVER (%)	QTY PER PACK
572001	Round	5/64	20	8	1178	1247	0.002 - 0.005	0	20

**BRAZING & SOLDERING SUPPLIES**



**Brazing Rods & Flux**

**Stay-Silv Brazing Flux**



- All purpose, low temperature flux for use with most ferrous and non-ferrous metals
- Not for use with aluminum, magnesium or titanium

PART NO	DESCRIPTION	CASE QTY	CASE REQ
86-25254-09	Brazing Flux (Stay-Silv) - Bottle (6.5 oz)	24	Yes



**Brazing Kit – Safety-Silv 45 (Includes Brazing Wire & Flux)**

- Kit includes brazing wire and flux
- General Purpose filler for steel and copper alloys
- Recommended for wide clearances

PART NO	WIRE DIA (IN)	SPOOL WEIGHT (OZ)	FLUX WEIGHT (OZ)	FLUIDITY RATING	SOLIDUS TEMP (°F)	LIQUIDUS TEMP (°F)	REC JOINT CLEARANCE	SILVER (%)
86-25254-08	1/16	1	1.75	6.5	1225	1370	0.002 - 0.004	45

**Soldering Wire & Flux**

**Stay-Brite Silver Soldering Wire (Lead Free)**



- Recommended for use with all ferrous and nonferrous metal except aluminum
- 86-25254-01 (Stay-Brite 8) is excellent for use with loosely fitted joints



PART NO	WIRE DIA (IN)	SPOOL WEIGHT (OZ)	FLUIDITY RATING	SOLIDUS TEMP (°F)	LIQUIDUS TEMP (°F)	REC JOINT CLEARANCE	SILVER (%)
86-25254-01	1/8	1	10	430	535	0.002 - 0.004	6
86-25254-02	1/8	1	7	430	430	0.002 - 0.003	4



**Bridgit Soldering Wire (Lead Free)**

- Recommended for use with all ferrous and non-ferrous metal except aluminum
- Widely used in plumbing applications
- Contains nickel, a filler contributing to increased strength
- Fills gaps and caps off easily
- Excellent for use with loosely fitted joints

PART NO	WIRE DIA (IN)	SPOOL WEIGHT (OZ)	FLUIDITY RATING	SOLIDUS TEMP (°F)	LIQUIDUS TEMP (°F)	REC JOINT CLEARANCE	SILVER (%)
86-25254-03	1/8	1	4	460	630	0.002 - 0.004	1

**Stay-Clean Soldering Flux**

- Recommended for use with tin-lead, tin-antimony and tin-silver solders
- For use with copper, brass, bronze, steel, stainless steel, galvanized steel and Monel
- Not for use with aluminum, magnesium or titanium
- Not for use with electrical applications



PART NO	DESCRIPTION	CASE QTY	CASE REQ
86-25254-04	Soldering Flux (Stay-Clean) Paste - Jar (4 oz)	24	Yes

**Soldering Kit for Aluminum Soldering (Includes Wire & Flux)**

- Kit includes soldering wire and flux
- Recommended for use with aluminum and zinc
- Not for use with magnesium



PART NO	WIRE DIA (IN)	SPOOL WEIGHT (OZ)	FLUX WEIGHT (OZ)	FLUIDITY RATING	SOLIDUS TEMP (°F)	LIQUIDUS TEMP (°F)	REC JOINT CLEARANCE	SILVER (%)
86-25254-10	1/8	1	1	8	391	482	0.003 - 0.007	0

**BRAZING & SOLDERING SUPPLIES**

**Thermal Shield**



**Thermo-Trap Gel**

- Functions as a heat sink and a heat shielding material
- Non-toxic, environmentally safe, non-corrosive and non-flammable
- Stops heat from traveling through most metals
- Provides a heat barrier from direct, open flame contact



PART NO	DESCRIPTION	CASE QTY	CASE REQ
4371-36	Thermo-Trap Gel - Tube (11 oz.)	24	Yes



**ColdShield Thermal Gel**

- Functions as a heat sink and a heat shielding material
- Non-toxic, environmentally safe, non-corrosive and non-flammable
- Stops heat from traveling through most metals
- Provides a heat barrier from direct, open flame contact



PART NO	DESCRIPTION	CASE QTY	CASE REQ
86-1273-3	ColdShield Thermal Gel - Spray Bottle (32 oz.)	12	Yes



**ColdShield Thermal Paste**

- Functions as a heat sink and a heat shielding material
- Non-toxic, environmentally safe, non-corrosive and non-flammable
- Stops heat from traveling through most metals
- Provides a heat barrier from direct, open flame contact



PART NO	DESCRIPTION	CASE QTY	CASE REQ
86-1274-7	ColdShield Thermal Paste - Tub (32 oz.)	12	Yes

**CLOTHING AND PERSONAL PROTECTION EQUIPMENT**



**Shubee Shoe Covers – Original**



PART NO	VENDOR PART NO	DESCRIPTION	CASE QTY	CASE REQ
849101	SB-SP-DB	Shoe Covers - Dark Blue (Bag of 10 Pairs)	15	Yes
849107	SB-SP-GR	Shoe Covers - Dark Green (Bag of 10 Pairs)	15	Yes
849105	SB-SP-LB	Shoe Covers - Light Blue (Bag of 10 Pairs)	15	Yes
849115	SB-SC-LB	Shoe Covers - Light Blue (Box of 50 Pairs)	3	Yes
849103	SB-SP-OR	Shoe Covers - Orange (Bag of 10 Pairs)	15	Yes
849104	SB-SP-YL	Shoe Covers - Yellow (Bag of 10 Pairs)	15	Yes
849114	SB-SC-YL	Shoe Covers - Yellow (Box of 50 Pairs)	3	Yes

**CLOTHING AND PERSONAL PROTECTION EQUIPMENT**



**Shubee Shoe Covers – Waterproof**



PART NO	VENDOR PART NO	DESCRIPTION	CASE QTY	CASE REQ
849110	SB-SP-WP-DB	Shoe Covers - Waterproof - Dark Blue (Bag of 10 Pairs)	15	Yes
849120	SB-SC-WP-DB	Shoe Covers - Waterproof - Dark Blue (Box of 50 Pairs)	3	Yes
849108	SB-SP-WP-LB	Shoe Covers - Waterproof - Light Blue (Bag of 10 Pairs)	15	Yes

**Shubee Coveralls**



PART NO	VENDOR PART NO	DESCRIPTION	CASE QTY	CASE REQ
849121	SB-CA-DB-L	Coveralls - Dark Blue - L	25	Yes
849122	SB-CA-DB-XL	Coveralls - Dark Blue - XL	25	Yes

**Shubee Coveralls – Hooded Tyvek**



PART NO	VENDOR PART NO	DESCRIPTION	CASE QTY	CASE REQ
849125	SB-TCH-XL	Coveralls - Tyvek Hooded - White - XL	25	Yes



**Dust Masks**

PART NO	VENDOR PART NO	DESCRIPTION	CASE QTY	CASE REQ
849152	SM-DM	Dust Mask - Dust Filter (Box of 50)	1	—



**Gloves – Nitrile**

PART NO	VENDOR PART NO	DESCRIPTION	CASE QTY	CASE REQ
849135	SB-NG-PF-L	Gloves - Powderfree Nitrile - L (Box of 100)	10	Yes
849136	SB-NG-PF-XL	Gloves - Powderfree Nitrile - XL (Box of 100)	10	Yes



**Gloves – Latex**

PART NO	VENDOR PART NO	DESCRIPTION	CASE QTY	CASE REQ
849129	SB-LG-PF-L	Gloves - Powderfree Latex - L (Box of 100)	10	Yes
849130	SB-LG-PF-XL	Gloves - Powderfree Latex - XL (Box of 100)	10	Yes
849133	SB-LG-LP-XL	Gloves - Powdered Latex - XL (Box of 100)	10	Yes



## SCRUBS-IN-A-BUCKET



Disposable pumice hand cleaner impregnated towel; available in two self-dispensing canisters.



PART NO	DESCRIPTION	CASE QTY	CASE REQ
4366-24	Scrubs-In-A-Bucket - 30 Count	6	Yes
4366-87	Scrubs-In-A-Bucket - 80 Count	6	Yes

## HAND CLEANER - HEAVY DUTY PUMICE LOTION



- Contains premium grade cleansing agents and pumice that efficiently dissolve grease, paints, inks and other hard to remove soils
- Fortified with six skin conditioners
- Use with or without water
- Complies with USA VOC regulations



PART NO	DESCRIPTION	CASE QTY	CASE REQ
87-51431	Hand Cleaner - Heavy Duty - 15 oz.	—	—

## LIGHT BULBS (ROUGH SERVICE)



Rough service light bulbs include special filament constructed to withstand vibration and shock – originally designed for automotive industry.



- 12,500 hour typical life at 120V; 5,000 hour typical life at 130V
- Retail packaging

PART NO	VENDOR PART NO	DESCRIPTION	CASE QTY	CASE REQ
864017	60015	Light Bulb (Rough Service) - 50 Watt	120	Yes
864018	60016	Light Bulb (Rough Service) - 75 Watt	120	Yes
864019	60018	Light Bulb (Rough Service) - 100 Watt	120	Yes

## PIPE FLASHING



### Pipe Flashing – Aluminum

PART NO	BASE WIDTH (IN)	BASE LENGTH (IN)	TOP OPENING DIA (IN)	MATERIAL	COLOR	CASE QTY	CASE REQ
583002	8-3/4	12-1/2	2	Aluminum	Aluminum	12	Yes
583010	12	15-1/2	3 - 4	Aluminum	Black	12	Yes
583004	12	15-1/2	4	Aluminum	Aluminum	12	Yes



### Pipe Flashing – Poly

PART NO	BASE WIDTH (IN)	BASE LENGTH (IN)	TOP OPENING DIA (IN)	MATERIAL	COLOR	CASE QTY	CASE REQ
583014	4-1/2	4-1/2	Cut-to-fit (1/4 to 4)	EPDM	Black	6	Yes
583016	8	8	Cut-to-fit (1/4 to 4)	EPDM	Black	6	Yes
583018	11	11	3-1/2	EPDM	Black	2	Yes

## GROMMETS, BUSHINGS, AND ENCLOSURE PLUGS



### Center Cap for Condenser Grille

Center cap without brand label; fits most Rheem, Ruud, and WeatherKing outdoor equipment manufactured with wire fan grille.

PART NO	DESCRIPTION
91-101123-09	Center Cap Nameplate - Blank



### Motor Mounting Grommets

Collar type grommets can be used alone or in combination with the insert. When used in combination, the frame of the motor mount is sandwiched between the collar and insert, providing improved vibration dampening.



PART NO	GROMMET OD (IN)	GROMMET LENGTH (IN)	GROMMET SHAPE	COLOR	DUROMETER (SCALE 00)	CENTER HOLE DIA (IN)
56-24106-02	1.250	0.500	Collar (Round)	Natural	45	0.750
56-24106-01	1.250	0.500	Collar (Round)	Black	55	0.750
56-24107-02	1.250	0.905	Insert (Mushroom)	Natural	45	0.438
56-24107-01	1.250	0.905	Insert (Mushroom)	Black	64	0.438



### Compressor Mounting Grommets

PART NO	OPENING SHAPE	FITS NOMINAL HOLE DIA (IN)	MAX SHEET METAL THICKNESS (IN)	GROMMET OD (IN)	GROMMET HEIGHT (IN)	MATERIAL	CENTER HOLE DIA (IN)
56-18518-01	Round	0.750	0.160	1.250	1.160	Rubber	0.440
56-18518-14	Round	0.750	0.160	1.250	1.381	Rubber	0.440
56-18518-06	Round	0.750	0.160	1.620	1.160	Rubber	0.440



### Button Plugs with Recessed Head

PART NO	OPENING SHAPE	FITS NOMINAL HOLE DIA (IN)	MAX SHEET METAL THICKNESS (IN)	MATERIAL
45-22980-05	Round	0.875	0.100	Polyethylene
45-22980-01	Round	1.125	0.180	Polyethylene
45-22980-07	Round	1.250	0.100	Polyethylene
45-22980-02	Round	1.625	0.100	Polyethylene
45-22980-06	Round	1.750	0.100	Polyethylene
45-22980-08	Round	2.000	0.100	Polyethylene
45-22980-03	Round	2.375	0.180	Polyethylene
45-42558-01	Obround	1.234 x 1.774 (major dimensions)	0.035	Polyethylene



### Button Plugs - Metal Snap-In

PART NO	OPENING SHAPE	FITS NOMINAL HOLE DIA (IN)	MAX SHEET METAL THICKNESS (IN)	MATERIAL
45-18232-17	Round	0.437	0.047	Zinc or Nickel Plated Steel
45-18232-02	Round	0.875	0.093	Zinc or Nickel Plated Steel



### Button Plugs - Plastic Snap-In

PART NO	OPENING SHAPE	FITS NOMINAL HOLE DIA (IN)	MAX SHEET METAL THICKNESS (IN)	MATERIAL
45-24125-01	Round	0.219	0.062	Polyethylene
45-22926-01	Round	0.875	0.125	Nylon
45-22926-02	Round	1.125	0.125	Nylon

## GROMMETS, BUSHINGS, AND ENCLOSURE PLUGS



### Grommets for Gas Pipe

PART NO	OPENING SHAPE	FITS NOMINAL HOLE DIA (IN)	MAX SHEET METAL THICKNESS (IN)	MATERIAL	CENTER HOLE DIA (IN)
56-22114-02	Round	1.125	0.125	Vinyl	0.500
56-22114-04	Round	1.250	0.125	Vinyl	0.625
56-22114-01	Round	1.625	0.125	Vinyl	0.875
56-22114-06	Round	2.000	0.125	Vinyl	0.875
56-22114-07	Round	2.000	0.125	Vinyl	1.062



### Grommets for Furnace Drain Tubing

PART NO	OPENING SHAPE	FITS NOMINAL HOLE DIA (IN)	MAX SHEET METAL THICKNESS (IN)	MATERIAL	CENTER HOLE DIA (IN)
56-24008-02	Round	0.375	0.062	Rubber	0.250
56-24008-01	Round	0.625	0.062	Rubber	0.500
56-22521-03	Round	0.875	0.030	Rubber	0.593



### Strain-Relief Bushings

PART NO	OPENING SHAPE	FITS NOMINAL HOLE DIA (IN)	MAX SHEET METAL THICKNESS (IN)	MATERIAL	CENTER HOLE DIA (IN)
45-17055-01	Round	0.5	0.100	Nylon	0.250
45-17055-06	Round	0.5	0.090	Nylon	0.300



### Snap-In Bushings for Wire Protection

PART NO	OPENING SHAPE	FITS NOMINAL HOLE DIA (IN)	MAX SHEET METAL THICKNESS (IN)	MATERIAL	CENTER HOLE DIA (IN)	CENTER HOLE SHAPE
45-24204-01	Round	0.375	0.125	Nylon	0.125	Round - Slotted
45-42519-01	Round	0.437	0.125	Nylon	0.243	Round
45-17057-11	Round	0.500	0.125	Nylon	0.375	Round
45-18515-01	Round	0.875	0.125	Nylon	0.563	Round - Star Perf



### Anti-Short Bushing

Used to protect conductor insulation from rough edges of armored cable and flexible metal conduit.

PART NO	OPENING SHAPE	SIZES	MATERIAL	CASE QTY	CASE REQ
45-40646-02	Round	10-4, 8-2, 8-3, 1-1	Plastic	50	Yes

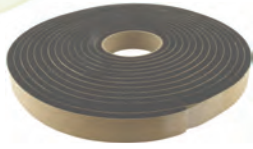
## ABRASIVE CLOTH



Aluminum oxide high quality 120 grit abrasive cloth for cleaning copper and steel tubing; works wet or dry.

PART NO	DESCRIPTION	CASE QTY	CASE REQ
86-25161-04	Abrasive Cloth - 120 grit (1-1/2 in. x 10 yards)	24	Yes

**INSULATION, SEALING & GASKET MATERIALS**



**OEM Neoprene Gasket – Rolls**

- Meets OEM requirements; excellent weather resistance
- Roll form with pressure paper backed adhesive
- Suitable for temperature range of -70 to 250°F
- Meets UL94HFI and UL94HBF flammability tests

PART NO	WIDTH (IN)	THICKNESS (IN)	ROLL LENGTH (FT)
68-22079-82	1/2	1/16	100
68-22079-84	1/2	1/8	100
68-22079-88	1/2	1/4	16
68-22079-85	3/4	1/8	100
68-22079-87	3/4	1/4	100
68-22079-81	1-1/8	5/16	25

**Sealing Gum**

A non-staining white sealer that can be formed into any shape by hand.

- Odorless
- Never hardens
- Flexible to -20°F



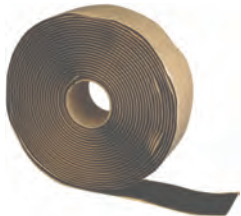
**Sealing Gum Cord**

PART NO	DESCRIPTION	CASE QTY	CASE REQ
86-H-2901	Sealing Gum Cord 3/8 in. diameter x 25 ft.	12	Yes



**Sealing Gum Slug**

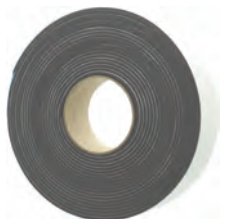
PART NO	DESCRIPTION	CASE QTY	CASE REQ
86-H-2902	Sealing Gum Slug - 2 lbs.	24	Yes



**ATI-C230 Cork Insulation Tape**

Effectively insulates hot or cold pipes; stops condensation and drips. Adheres well to all clean, non-porous surfaces and to itself for multiple wrap applications. Easily cut into piece and molded around fittings and valves.

PART NO	THICKNESS (IN)	WIDTH (IN)	ROLL LENGTH (FT)	COLOR	BACKING	ADHESIVE	SERVICE TEMP RANGE (°F)	CASE QTY	CASE REQ
ATI-C230	1/8	2	30	Black	Cork	Self-Adhesive	-20 to 190	10	Yes



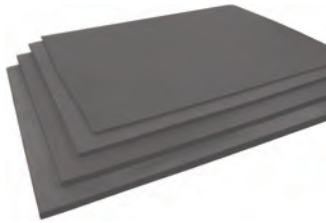
**86-2800 Polyethylene Insulation Tape**

For hot or cold pipes; stops condensation and drips. Adheres well to all metals; resists drying and cracking.

PART NO	THICKNESS (IN)	WIDTH (IN)	ROLL LENGTH (IN)	COLOR	BACKING	ADHESIVE	SERVICE TEMP RANGE (°F)	CASE QTY	CASE REQ
86-2800	1/8	2	360	Black	Cross-linked Polyethylene Foam	Rubber Base	-20 to 160	12	Yes



**INSULATION, SEALING & GASKET MATERIALS**



**Aerocel EPDM Sheet Insulation**



Aerocel EPDM Elastomeric Sheet Insulation is a flexible closed cell and lightweight elastomeric material with a smooth and durable surface, designed for insulating large pipes, tanks, vessels, air ducts, inside air handling panels and more.

Besides being the ideal insulation for many kinds of piping systems and equipment, Aerocel is also used as insulation for all kinds of HVAC ducting systems, including supply, return and intake air. Aerocel EPDM Elastomeric Sheet is an excellent choice for insulating duct work, both internally lined and externally wrapped. Aerocel has been favored over fibrous insulating materials mainly because of the possible dangers of health concerns with the use of fibrous materials. Aerocel, made from special modified elastomeric material, ensures a long service life and can be safely handled without any concern of skin irritation. It is also not hazardous to health, so no special precautions are needed for application or service. Aerocel offers superior resistance to moisture, fungus growth, vermin and rodent attack. Clean and easy to install; offers a neat installed appearance because of its smooth surface.

Aerocel sheet also meets the standards stated in UL181 for mold growth/humidity, air erosion and passes ASTM G 21 Fungal Resistance. Key features include:

- UV resistant
- Low thermal conductivity
- Easy to install
- 25/50 rated through 2 in. wall
- Fiber free

PART NO	DESCRIPTION	CASE QTY	CASE REQ
ACS1443	Insulation Sheet - 4 ft. x 3 ft. x 1/4 in.	24	Yes
ACS3843	Insulation Sheet - 4 ft. x 3 ft. x 3/8 in.	16	Yes
ACS1243	Insulation Sheet - 4 ft. x 3 ft. x 1/2 in.	12	Yes
ACS5843	Insulation Sheet - 4 ft. x 3 ft. x 5/8 in.	10	Yes
ACS3443	Insulation Sheet - 4 ft. x 3 ft. x 3/4 in.	8	Yes
ACS1043	Insulation Sheet - 4 ft. x 3 ft. x 1 in.	6	Yes

**Aerocel EPDM Tubing Insulation**



**EPDM Tubing**

Aerocel pipe insulation is used to retard heat gain or loss, and control condensation formation on cold-water plumbing, chilled water, and refrigeration lines. The material also efficiently reduces heat flow for hot water plumbing, liquid heating and dual temperature piping systems. Aerocel sheet is used to insulate OD pipes, chillers, vessels and tanks, and can be used as a duct liner or duct wrap. Aerocel is designed for installation above and below ground, indoors and outdoors. No protective finish is required.

Aerocel Pipe insulation is uniquely suited, over many other cellular or fibrous insulation materials, to dual-temperature HVAC piping systems. This unique fit results from Aerocel's proprietary combination of very low moisture vapor flow for times of cooling-mode operation, higher temperature usage properties during times of heating-mode operation, and superior insulating capacity in either operating mode.

Approved by or conforms to the requirements of the following: ASTM C 534, NY City MEA #171-04-M, City of LA RR-8413, UL181 Section 13 Mold Growth Humidity, ASTM G 21 Fungal Resistance Test, UL181 Section 18 Air Erosion, NFPA 90 5 & 90B, MIL I528OJ. Meets the energy code requirements of International energy Conservation Code (IECC) and ASHRAE for R-4 for Refrigeration Piping at 1 in. wall thickness.

The unique cell structure of Aerocel EPDM insulation effectively retards the flow of moisture vapor. It is considered a low transmittance vapor retarder. In normal service conditions, Aerocel requires no supplemental vapor retarder protection. When used in extremely low-temperature or extremely high-humidity conditions, an additional vapor barrier maybe required. Key features include:

- UV Resistant; added weather protection not required, saves on first cost and maintenance
- Low thermal conductivity; saves additional energy costs
- Recommended service temperature range -297 to +257°F; cryogenic to low pressure steam
- E 84 25/50 rated through 2 in. wall thickness; lowers installation cost with fewer layers
- Versatile for heating, AC, refrigeration, solar, plumbing; single product for all systems
- Easy to install; lowers installation costs, keeps job cost as estimated



**Split EPDM Tubing w/Protape**

**INSULATION, SEALING & GASKET MATERIALS**



**Aerocel EPDM Tubing Insulation (AC Series)**



**Nominal 3/8 Inch Wall – Aerocel AC Series Tubing Insulation**

PART NO	ID (IN)	WALL THICKNESS (IN)	LENGTH (FT)	FITS (ACR) COPPER TUBE SIZE (IN)	FITS (IPS) IRON PIPE SIZE (IN)	CASE QTY	CASE REQ
AC1438	1/4	3/8	6	1/4	—	130	Yes
AC3838	3/8	3/8	6	3/8	—	120	Yes
AC1238	1/2	3/8	6	1/2	1/4	108	Yes
AC5838	5/8	3/8	6	5/8	3/8	88	Yes
AC3438	3/4	3/8	6	3/4	—	70	Yes
AC7838	7/8	3/8	6	7/8	1/2	63	Yes
AC11838	1-1/8	3/8	6	1-1/8	3/4	48	Yes
AC13838	1-3/8	3/8	6	1-3/8	1	35	Yes
AC15838	1-5/8	3/8	6	1-5/8	1-1/4	30	Yes
AC21838	2-1/8	3/8	6	2-1/8	—	19	Yes
AC23838	2-3/8	3/8	6	—	2	13	Yes
AC25838	2-5/8	3/8	6	2-5/8	—	14	Yes
AC31838	3-1/8	3/8	6	3-1/8	—	10	Yes

**Nominal 1/2 Inch Wall – Aerocel AC Series Tubing Insulation**

PART NO	ID (IN)	WALL THICKNESS (IN)	LENGTH (FT)	FITS (ACR) COPPER TUBE SIZE (IN)	FITS (IPS) IRON PIPE SIZE (IN)	CASE QTY	CASE REQ
AC3812	3/8	1/2	6	3/8	—	99	Yes
AC1212	1/2	1/2	6	1/2	1/4	72	Yes
AC5812	5/8	1/2	6	5/8	3/8	63	Yes
AC3412	3/4	1/2	6	3/4	—	56	Yes
AC7812	7/8	1/2	6	7/8	1/2	48	Yes
AC11812	1-1/8	1/2	6	1-1/8	3/4	36	Yes
AC13812	1-3/8	1/2	6	1-3/8	1	29	Yes
AC15812	1-5/8	1/2	6	1-5/8	1-1/4	23	Yes
AC21812	2-1/8	1/2	6	2-1/8	—	15	Yes
AC23812	2-3/8	1/2	6	—	2	13	Yes
AC25812	2-5/8	1/2	6	2-5/8	—	12	Yes
AC31812	3-1/8	1/2	6	3-1/8	—	10	Yes
AC35812	3-5/8	1/2	6	3-5/8	—	10	Yes
AC41212	4-1/2	1/2	6	—	—	6	Yes

**Nominal 3/4 Inch Wall – Aerocel AC Series Tubing Insulation**

PART NO	ID (IN)	WALL THICKNESS (IN)	LENGTH (FT)	FITS (ACR) COPPER TUBE SIZE (IN)	FITS (IPS) IRON PIPE SIZE (IN)	CASE QTY	CASE REQ
AC3834	3/8	3/4	6	3/8	—	49	Yes
AC1234	1/2	3/4	6	1/2	1/4	48	Yes
AC5834	5/8	3/4	6	5/8	3/8	42	Yes
AC3434	3/4	3/4	6	3/4	—	30	Yes
AC7834	7/8	3/4	6	7/8	1/2	28	Yes
AC11834	1-1/8	3/4	6	1-1/8	3/4	21	Yes
AC13834	1-3/8	3/4	6	1-3/8	1	19	Yes
AC15834	1-5/8	3/4	6	1-5/8	1-1/4	12	Yes
AC21834	2-1/8	3/4	6	2-1/8	—	12	Yes
AC51234	5-1/2	3/4	6	—	—	4	Yes

**INSULATION, SEALING & GASKET MATERIALS**



**Aerocel EPDM Tubing Insulation (AC Series)**



**Nominal 1 Inch Wall – Aerocel AC Series Tubing Insulation**

PART NO	ID (IN)	WALL THICKNESS (IN)	LENGTH (FT)	FITS (ACR) COPPER TUBE SIZE (IN)	FITS (IPS) IRON PIPE SIZE (IN)	CASE QTY	CASE REQ
AC3810	3/8	1	6	3/8	—	23	Yes
AC1210	1/2	1	6	1/2	1/4	20	Yes
AC5810	5/8	1	6	5/8	3/8	22	Yes
AC3410	3/4	1	6	3/4	—	20	Yes
AC7810	7/8	1	6	7/8	1/2	20	Yes
AC11810	1-1/8	1	6	1-1/8	3/4	15	Yes
AC13810	1-3/8	1	6	1-3/8	1	12	Yes
AC15810	1-5/8	1	6	1-5/8	1-1/4	12	Yes
AC21810	2-1/8	1	6	2-1/8	—	10	Yes
AC23810	2-3/8	1	6	—	2	6	Yes
AC25810	2-5/8	1	6	2-5/8	—	6	Yes
AC31210	3-1/2	1	6	—	3	5	Yes

**Nominal 1-1/2 Inch Wall – Aerocel AC Series Tubing Insulation**

PART NO	ID (IN)	WALL THICKNESS (IN)	LENGTH (FT)	FITS (ACR) COPPER TUBE SIZE (IN)	FITS (IPS) IRON PIPE SIZE (IN)	CASE QTY	CASE REQ
AC118112	1-1/8	1-1/2	6	1	3/4	8	Yes



**Aerocel Split EPDM Tubing Insulation w/Protape (AC-SSPT Series)**



**Nominal 3/8 Inch Wall – Aerocel AC-SSPT Series Split Tubing Insulation w/Protape**

PART NO	ID (IN)	WALL THICKNESS (IN)	LENGTH (FT)	FITS (ACR) COPPER TUBE SIZE (IN)	FITS (IPS) IRON PIPE SIZE (IN)	CASE QTY	CASE REQ
AC1238SSPT	1/2	3/8	6	1/2	1/4	80	Yes
AC5838SSPT	5/8	3/8	6	5/8	3/8	65	Yes
AC3438SSPT	3/4	3/8	6	3/4	—	55	Yes
AC7838SSPT	7/8	3/8	6	7/8	1/2	48	Yes
AC11838SSPT	1-1/8	3/8	6	1-1/8	3/4	35	Yes
AC13838SSPT	1-3/8	3/8	6	1-3/8	1	30	Yes
AC15838SSPT	1-5/8	3/8	6	1-5/8	1-1/4	25	Yes
AC21838SSPT	2-1/8	3/8	6	2-1/8	—	16	Yes
AC25838SSPT	2-5/8	3/8	6	2-5/8	—	14	Yes
AC31838SSPT	3-1/8	3/8	6	3-1/8	—	10	Yes

**Nominal 1/2 Inch Wall – Aerocel AC-SSPT Series Split Tubing Insulation w/Protape**

PART NO	ID (IN)	WALL THICKNESS (IN)	LENGTH (FT)	FITS (ACR) COPPER TUBE SIZE (IN)	FITS (IPS) IRON PIPE SIZE (IN)	CASE QTY	CASE REQ
AC3812SSPT	3/8	1/2	6	3/8	—	70	Yes
AC1212SSPT	1/2	1/2	6	1/2	1/4	62	Yes
AC5812SSPT	5/8	1/2	6	5/8	3/8	48	Yes
AC3412SSPT	3/4	1/2	6	3/4	—	42	Yes
AC7812SSPT	7/8	1/2	6	7/8	1/2	35	Yes
AC11812SSPT	1-1/8	1/2	6	1-1/8	3/4	24	Yes
AC13812SSPT	1-3/8	1/2	6	1-3/8	1	24	Yes
AC15812SSPT	1-5/8	1/2	6	1-5/8	1-1/4	18	Yes

**INSULATION, SEALING & GASKET MATERIALS**



**Aeroceel Split EPDM Tubing Insulation w/Protape (AC-SSPT Series)**



**Nominal 3/4 Inch Wall – Aeroceel AC-SSPT Series Split Tubing Insulation w/Protape**

PART NO	ID (IN)	WALL THICKNESS (IN)	LENGTH (FT)	FITS (ACR) COPPER TUBE SIZE (IN)	FITS (IPS) IRON PIPE SIZE (IN)	CASE QTY	CASE REQ
AC3834SSPT	3/8	3/4	6	3/8	—	35	Yes
AC1234SSPT	1/2	3/4	6	1/2	1/4	32	Yes
AC5834SSPT	5/8	3/4	6	5/8	3/8	28	Yes
AC3434SSPT	3/4	3/4	6	3/4	—	24	Yes
AC7834SSPT	7/8	3/4	6	7/8	1/2	24	Yes
AC11834SSPT	1-1/8	3/4	6	1-1/8	3/4	18	Yes
AC13834SSPT	1-3/8	3/4	6	1-3/8	1	14	Yes
AC15834SSPT	1-5/8	3/4	6	1-5/8	1-1/4	12	Yes

**Nominal 1 Inch Wall – Aeroceel AC-SSPT Series Split Tubing Insulation w/Protape**

PART NO	ID (IN)	WALL THICKNESS (IN)	LENGTH (FT)	FITS (ACR) COPPER TUBE SIZE (IN)	FITS (IPS) IRON PIPE SIZE (IN)	CASE QTY	CASE REQ
AC5810SSPT	5/8	1	6	5/8	3/8	16	Yes
AC3410SSPT	3/4	1	6	3/4	—	16	Yes
AC7810SSPT	7/8	1	6	7/8	1/2	14	Yes
AC11810SSPT	1-1/8	1	6	1-1/8	3/4	12	Yes
AC13810SSPT	1-3/8	1	6	1-3/8	1	12	Yes
AC15810SSPT	1-5/8	1	6	1-5/8	1-1/4	9	Yes
AC23810SSPT	2-3/8	1	6	—	2	6	Yes
AC31210SSPT	3-1/2	1	6	—	3	4	Yes

**Adhesive for Aeroceel EPDM Insulation**



PART NO	DESCRIPTION	CASE QTY	CASE REQ
ADH-12PBTBLK	Black Adhesive for Aeroceel Tubing - 1/2 pint	48	Yes
ADH-1PBTBLK	Black Adhesive for Aeroceel Tubing - 1 pint	24	Yes
ADH-1GPBLK	Black Adhesive for Aeroceel Tubing - 1 gallon	4	Yes

**Aeroceel Protape**



An EPDM-based self-adhering rubber tape, specifically designed for covering the joints of Aeroceel tubing and sheet insulation. Provides extra holding strength to the joints and serves as a vapor retarder to prevent atmospheric moisture from penetrating the seams. It is easy to wrap and patch elastomeric insulation surfaces securely, giving cleaner visual appearance on installations.

PART NO	THICKNESS (IN)	WIDTH (IN)	ROLL LENGTH (FT)	COLOR	BACKING	ADHESIVE	SERVICE TEMP RANGE (°F)	CASE QTY	CASE REQ
TPPR060500251	20.0	2	82	Black	Self-Adhering	Acrylic Base EPDM Based Rubber	-70 to 257	12	Yes
TPPR060750251	20.0	3	82	Black	Self-Adhering	Acrylic Base EPDM Based Rubber	-70 to 257	8	Yes

**INSULATION, SEALING & GASKET MATERIALS**

**Expanding Foam Products**

**Nu-Calgon Nu-Foam Expanding Foam**



An expanding polyurethane prepolymer foam designed to seal, fill and insulate small cracks, gaps and voids. Can be used around openings created for refrigeration, air conditioning and heating tubes or pipes, duct joints, utility penetrations in exterior sheeting, masonry, concrete or wood walls, and other areas where unwanted air penetration might occur.

PART NO	CAN QTY (OZ)	CURE TIME/ DRYING TIME (HR)	MAX SHELF LIFE (MONTHS)	AGENCY CERT	APPROX LINEAR YIELD 3/8 IN BEAD (FT)	APPROX THERMAL CONDUCTIVITY (R-VALUE/IN)	CASE QTY	CASE REQ	DIREC SHIP ITEM
4293-04	9	4	24	UL classified UL723	352	4.9	12	Yes	Yes
4293-75	20	4	24	UL classified UL723	780	4.9	12	Yes	Yes

**BOSS 333 Polyurethane Expanding Foam**



A ready-to-use multi-purpose polyurethane foam that expands to three times its original volume on contact with air. The expanding action fills holes, cracks and gaps more completely than standard caulks. Designed for air sealing; partition walls with ceiling, through penetrations around cables and pipes, seams between chimneys, and roof protection. Excellent insulating properties and superb adhesion to virtually all building materials.

PART NO	CAN QTY (OZ)	CURE TIME/ DRYING TIME (HR)	MAX SHELF LIFE (MONTHS)	AGENCY CERT	APPROX YIELD (GAL)	APPROX THERMAL CONDUCTIVITY (R-VALUE/IN)	CASE QTY	CASE REQ	DIREC SHIP ITEM
86-333	12	24	18	ASTM E-84-04, UL classified - UL723	11	3.8 - 4.5	12	Yes	—
86-33324	24	24	18	ASTM E-84-04, UL classified - UL723	11	3.8 - 4.5	12	Yes	—

**BOSS 812 Draft/Smoke Stop Foam**



Prevents the spread of smoke and toxic gasses from one compartment to another; slowing fire spread due to lack of air to fuel the flame. Tested to ASTM E-84; classified Class A.

- Will adhere to almost any substrate
- Can be used to seal around copper, PVC pipes and conduits in addition to large spaces left after the installation of wastewater pipes, ducting etc.
- Prevents the spread of smoke and toxic gasses
- Can be used on vertical or horizontal applications
- Excellent acoustic and thermal insulation
- Paintable (after inspection)
- Unaffected by moisture or humidity after curing
- Reduces energy costs
- Prevents intrusion of insects and pests

PART NO	CAN QTY (OZ)	CURE TIME/ DRYING TIME (HR)	MAX SHELF LIFE (MONTHS)	AGENCY CERT	APPROX LINEAR YIELD 1/2 IN BEAD (FT)	APPROX THERMAL CONDUCTIVITY (R-VALUE/IN)	CASE QTY	CASE REQ	DIREC SHIP ITEM
86-812	24	24	12	ASTM E-84-04, UL classified - UL723	880	3.8 - 4.5	12	Yes	—

**INSULATION, SEALING & GASKET MATERIALS**

**Expanding Foam Products**



**Touch 'n Seal Quick Cure Polyurethane Foam Sealant**



A quick and easy means to seal cracks and gaps around plumbing, ventilation outlets, electrical junctions, between sole plates and concrete slabs, or anywhere you need an air-sealing moisture barrier. The all-direction dispensing straw system is ideal for maneuvering tight spots; the special adapter allows for the can to be partially used stored and re-started later. Excellent filler with exceptional expansion and cure time.

PART NO	CAN QTY (OZ)	CURE TIME/ DRYING TIME (HR)	MAX SHELF LIFE (MONTHS)	AGENCY CERT	APPROX LINEAR YIELD 3/8 IN BEAD (FT)	APPROX THERMAL CONDUCTIVITY (R-VALUE/IN)	CASE QTY	CASE REQ	DIREC SHIP ITEM
4004521212	12	4	24	UL classified UL723	408	4.9	12	Yes	—
4004521224	24	4	24	UL classified UL723	818	4.9	12	Yes	—

**Touch 'n Seal Gun Applied Foam Products**



**Gun Foam II Polyurethane Foam Sealant**

A gun-applied, bright orange one-component polyurethane foam that is more cost effective and easier to install than traditional fireblocking methods such as gypsum, cement, fiberglass, mineral wool, etc. It is ideal for use in space connections in soffits and drop ceilings, lines of separation in multi-family dwellings, partitions and stud walls at ceilings and floors, top and bottom of stair stringers, or any through-penetration. ASTM E-814 defines a fireblock as "...materials installed within concealed spaces to resist or block the migration of fire and hot gases for an undetermined period of time."

- Approved fireblock penetration sealant; Evaluation Report No. ICC-ES ESR-1926
- Type V residential fireblock
- Easy-to-identify orange color
- Seals gaps and cracks, stops air infiltration permanently
- Creates moisture vapor barrier
- Outperforms fiberglass

PART NO	CAN QTY (OZ)	CURE TIME/ DRYING TIME (HR)	MAX SHELF LIFE (MONTHS)	AGENCY CERT	APPROX LINEAR YIELD 3/8 IN BEAD (FT)	APPROX THERMAL CONDUCTIVITY (R-VALUE/IN)	CASE QTY	CASE REQ	DIREC SHIP ITEM
4004528712	24	1/2	18	ASTM E-814, UL classified - UL723	1420	4.5	12	Yes	—

**Poly-Clean Polyurethane Foam Cleaner**



Formulated to remove wet polyurethane foam from hands, tools and gun applicators. Can also be attached directly to the foam applicator gun to flush foam from the barrel. Any excess foam should be cleaned immediately (while wet), as dried foam is extremely difficult to remove and may have to wear off.

PART NO	CAN QTY (OZ)	DESCRIPTION	CASE QTY	CASE REQ
4004712022	12	Manual / Sharpshooter Gun	12	Yes

**Sharpshooter-X Professional Foam Applicator Gun**



PART NO	DESCRIPTION
4004510608	Touch 'n Seal Sharpshooter-X Professional Foam Applicator Gun

**ADHESIVES**



**86-N357-SA Spray Adhesive – Low VOC**



May be used to bond fabric, fiberglass insulation, plastic films, felt, rubber, leather, cork, paper, cardboard, urethane foam, foil to metal, wood to wood and a variety of other substrates. Bonds PE to concrete block, wood, and other hard-to-bond surfaces. May be used to bond carpet and is ideal for label applications.

- Fast skin, fast grab, low soak in spray adhesive
- Contains no methylene chloride
- Extremely flammable
- Water white color
- Application temperature: -10 to 180°F
- Lace spray pattern

PART NO	DESCRIPTION	CASE QTY	CASE REQ
86-N357-SA	Spray Adhesive - Low VOC (17 oz. Aerosol)	12	Yes



**86-P44 Spray Adhesive**



Fast skin, high tack, low soak-in rate adhesive designed for temporary and permanent bonding. Bonds foils and metals to fibrous and paper insulation, and paper, fabrics, leather, rubber and wood to various other substrates.

- High strength & coverage; high solids content
- Contains no methylene chloride
- Extremely flammable
- Sprays white; dries clear
- Application temperature: 40 to 120°F
- Good UV, moisture and oxidation resistance
- Adjustable nozzle
- Non-run, non-string spray

PART NO	DESCRIPTION	CASE QTY	CASE REQ
86-P44	Spray Adhesive (17 oz. Aerosol)	12	Yes



**Mean Green Cylinderized Adhesive**



Mean Green is a high solids, pressure sensitive adhesive specially formulated for quick tack and a strong bond which resists heat, cold and moisture. A controlled lace or web spray pattern provides a low soak-in so more adhesive remains on the surface where it is needed. It is the only cylinderized solvent-based adhesive that meets DOT 39 nonflammable regulations and has been approved by the California EPA.

PART NO	DESCRIPTION	DIRECT SHIP ITEM
MG-375	Mean Green Adhesive Cylinder (375 lbs.)	Yes
MG-LC	Mean Green Adhesive Cylinder (40 lbs.)	Yes
MG-SC	Mean Green Adhesive Cylinder (15 lbs.)	Yes
SPR-LG	Spray Gun for Mean Green Adhesive (Metal)	—
THA-12	Hose for Mean Green Adhesive (12 ft.)	—
THA-18	Hose for Mean Green Adhesive (18 ft.)	—
THA-6	Hose for Mean Green Adhesive (6 ft.)	—

**CAULKING, SEALANTS & FIRE STOP**



**PROTECH 370 HVAC/R Silicon Sealant**



Silicon one-part acetoxy cure adhesive sealant that is suitable for general heating, ventilation and air conditioning sealing and adhesive applications. This product will adhere to clean metal, glass, many types of wood, silicone resins, vulcanized silicone rubber, ceramics and plastic surfaces. A primer may be required for optimum adhesion to some substrates.

- Sealing heating, ventilating or air conditioning duct work
- Sealing cracks or gaps around windows, vents, ducts, fixtures and lights
- Sealing leaks in gutters, downspouts, ducts and piping
- Sealing electrical connections and boxes to waterproof
- Bonding gaskets in heating and refrigeration units

PART NO	COLOR	TACT-FREE DRYING TIME (HR)	CURE TIME/ DRYING TIME (DAYS)	SHELF LIFE (MONTHS)	CARTRIDGE QTY (OZ)	CASE QTY	CASE REQ
86-370A	Aluminum	1/3	7	12	10.1	12	Yes
86-370C	Clear	1/3	7	12	10.1	12	Yes
86-370W	White	1/3	7	12	10.1	12	Yes



**BOSS 136 Fireblock/Draftstop Sealant**



Single component fire rated sealant and is a noncombustible filler caulking used for fire blocking applications in the annular space around wires, pipes, ducts, vents, cable lines and other penetrations to the building envelope. It is a non-slumping sealant that sets to form a hard surface. Can be applied to any gap or penetration where the specification is noncombustible and/or ASTM-E136 rated. The noncombustible specification is common to one and two family construction and to non-rated penetrations in multi-family and commercial construction. Colored red for ease of inspection. In the event of a fire, prevents the spread of fire, smoke and toxic gases through penetration openings. To comply with ASTM E-136, a material must withstand 1400°F without exhibiting signs of flaming after the first thirty seconds in the test apparatus. Serves to form a “gasket or seal against air infiltration” as required by the Model Energy Code in both the performance and prescriptive versions. Applicable standards include: UBC page 1-387, 1997 edition, CABO Section 602.7 item 4, 1995 edition, BOCA (NBC) 704.4.1.1 1996, ASTM E-136.

- Non-toxic and contains no asbestos or PCBs
- Noncombustible
- Applied with a conventional caulking gun
- Easily applied sealant with water cleanup capabilities
- An accredited fire block/smoke seal caulk
- Single component system, no mixing necessary and no additions required
- Meets residential construction code approvals including IRC
- For interior applications only
- Excellent adhesion to a wide variety of substrate material

PART NO	COLOR	TACT-FREE DRYING TIME (HR)	CURE TIME/ DRYING TIME (DAYS)	SHELF LIFE (MONTHS)	CARTRIDGE QTY (OZ)	CASE QTY	CASE REQ
86-136	Red	—	3	12	10.1	12	Yes



**BOSS 139 Fire Mortar**



Non-combustible silicate cement that can withstand extremely high temperatures. Formulated for repairing chimneys, fireplaces and sealing wood-burning stoves and appliances, this product has strong adhesion and sets to become rock hard when fired. Cannot be used in areas where there is constant movement, or where wet conditions exist or may occur. Tested and exceeds ASTM E-136 and can withstand temperatures of up to 1400°F. Can be used in wood frame construction where an ASTM E-136 non combustibile sealant is specified and where allowed by the building code. This includes sealing around pipes, ducts, vents and chimneys at ceiling and floor level before drywall is applied.

- Can withstand extremely high heat
- Dries rock hard when cured and fired
- Safe to use and handle
- No harmful odors
- Water clean-up (prior to curing)
- VOC compliant
- Contains no asbestos fillers of any kind

PART NO	COLOR	TACT-FREE DRYING TIME (HR)	CURE TIME/ DRYING TIME (HR)	SHELF LIFE (MONTHS)	CARTRIDGE QTY (OZ)	CASE QTY	CASE REQ
86-139	Black	1/4	24	12	10.1	12	Yes



**CAULKING, SEALANTS & FIRE STOP**



**BOSS 360 Acrylic Latex Painters Caulk**



Designed for both interior and exterior use. Forms a tough, flexible, resilient bond to all building material surfaces. It has excellent resistance to water, weathering and moisture vapor. Cures to produce a flexible seal that is non-yellowing.

- Sealing around window and door frames
- Sealing around baseboards
- Sealing around trim
- Sealing anywhere a weather tight seal is desired
- Sealing corner joints
- Sealing where siding meets trim

PART NO	COLOR	TACT-FREE DRYING TIME (HR)	CURE TIME/ DRYING TIME (HR)	SHELF LIFE (MONTHS)	CARTRIDGE QTY (OZ)	CASE QTY	CASE REQ
86-360W	White	1/2	2	12	10.1	12	Yes



**BOSS 362 Siliconized Acrylic Latex Caulk**



Mildew resistant, paintable sealant formulated to provide long lasting, flexible, weatherproof seals between most common building materials including wood, masonry, concrete, brick, drywall, metal and glass. Its smooth, creamy consistency makes it easy to tool, and it cures to a tough, flexible seal. Can be used for both interior and exterior applications.

- Sealing around window and door frames
- Sealing around baseboards
- Sealing around trim
- Sealing anywhere a weather tight seal is desired
- Sealing corner joints
- Sealing where siding meets trim

PART NO	COLOR	TACT-FREE DRYING TIME (HR)	CURE TIME/ DRYING TIME (HR)	SHELF LIFE (MONTHS)	CARTRIDGE QTY (OZ)	CASE QTY	CASE REQ
86-362W	White	1/2	2	12	10.1	12	Yes



**BOSS 376 HVAC/R Hi-Temp Red Silicon Sealant**



One-part, non-slumping paste that cures to a tough, rubbery solid at room temperature on exposure to water vapor in the air. This silicone product was formulated to perform at temperatures ranging from -85 to 500°F. It can be used for numerous sealing and bonding applications.

- Sealing and encapsulating heating elements in appliances
- Stove and furnace vent pipes
- Moving oven belts
- Industrial ovens
- Bag filters on smoke stacks
- Other critical bonding, sealing, potting, encapsulating and protective coating where parts must perform at high temps

PART NO	COLOR	TACT-FREE DRYING TIME (HR)	CURE TIME/ DRYING TIME (HR)	SHELF LIFE (MONTHS)	CARTRIDGE QTY (OZ)	CASE QTY	CASE REQ
86-376R	Red	1/3	24	12	10.1	12	Yes



**BOSS 814 Latex Intumescent Firestop Sealant**



UL classified one part, elastomeric, intumescent fire stop sealant that expands when exposed to fire or extreme heat, forming an insulated char; prevents the spread of toxic gases, smoke and fire. Suitable for adhesion to almost any surface and remains flexible, making it ideal for both horizontal and vertical joints, subject to vibration or dynamic movement. Can be used for interior or exterior applications, and can be painted (after inspection). Tested to ASTM E-814 (UL 1479) and meets the criteria for fire/smoke/draft stop for BOCA – CABO – UBC – SBCCI – IRC.

- Interior/exterior use on virtually any surface
- Remains flexible
- VOC compliant
- Excellent freeze/thaw properties
- Safe to use and handle
- Water clean-up

PART NO	COLOR	TACT-FREE DRYING TIME (HR)	CURE TIME/ DRYING TIME (DAYS)	SHELF LIFE (MONTHS)	CARTRIDGE QTY (OZ)	CASE QTY	CASE REQ
86-814	Red	1/4	14 to 20	12	10.1	12	True

**CAULKING, SEALANTS & FIRE STOP**



**BOSS 816 Intumescent Firestop Sealant**



UL classified fire-rated, general purpose sealant for use on through-penetrations and construction joints. It is a single component, non-sag, water based sealant and smoke seal that is easy to apply and clean up. Prevents the spread of toxic gases, water, smoke and fire through joint openings and through penetrations. Suitable for adhesion to almost any surface and remains flexible, making it ideal for both horizontal and vertical joints, subject to vibration or dynamic movement. It bonds quickly, has excellent adhesion and is non-toxic. Protects against mold growth with a combination of biocides in both wet and dry stages. It has been tested to ASTM E-814 (UL 1479) and ASTM E1966 (UL 2079).

- Bonds quickly with excellent adhesion
- Mildew resistant
- Remains flexible
- VOC compliant
- Excellent freeze/thaw properties
- Safe to use and handle
- Water based and paintable

PART NO	COLOR	TACT-FREE DRYING TIME (HR)	CURE TIME/ DRYING TIME (DAYS)	SHELF LIFE (MONTHS)	CARTRIDGE QTY (OZ)	CASE QTY	CASE REQ
86-816R	Red	1/2	21 to 28	24	10.1	12	Yes

**WD-40**



WD-40 protects metal from rust and corrosion, penetrates stuck parts, displaces moisture, and lubricates just about anything. WD-40 is also effective when it comes to cleaning grease, grime, and other marks from most surfaces. Cans with “Smart Straw” feature a permanently attached straw that sprays two ways; flip it up for a precision stream or down for a regular spray action.



**WD-40 Cans**

PART NO	DESCRIPTION	CASE QTY	CASE REQ
85-110078	WD-40 - 11 oz. Aerosol Can (Smart Straw)	12	Yes
85-10116	WD-40 - 16 oz. Aerosol Can	12	Yes
85-110054	WD-40 - 8 oz. Aerosol Can	12	Yes

**WD-40 Cans with Display**



PART NO	DESCRIPTION	CASE QTY	CASE REQ
85-10308	WD-40 - 8 oz. Aerosol Cans w/Display	48	Yes

## THREAD SEALANTS & JOINT COMPOUNDS



### Great Blue Pipe Joint Compound



A blue colored non-separating thread sealant compound formulated to seal threaded connections on metal and plastic pipe up to and including two inch diameter. Fibrous texture enhances the sealing properties. Permits easy disassembly without stripping or damaging threads and is non-toxic, non-staining, and can be wiped clean using a dry cloth.

- Certified to ANSI/NSF Standard 61 for potable water
- CSA listed to Requirement 4-90 for Natural Gas and LP

PART NO	DESCRIPTION	CASE QTY	CASE REQ
31261	Great Blue Pipe Joint Compound - 4 oz.	12	Yes
31262	Great Blue Pipe Joint Compound - 8 oz.	12	Yes



### Great White Pipe Joint Compound with PTFE



A white colored non-separating thread sealant compound with PTFE designed to seal thread connections against leakage due to internal pressure. Permits a tighter assembly with lower torque, secure permanent sealing of all thread connections, and allows for easy disassembly without stripping threads.

- Certified to ANSI/NSF Standard 61 for potable water

PART NO	DESCRIPTION	CASE QTY	CASE REQ
31229	Great White Pipe Joint Compound with PTFE - 1 oz.	12	Yes
31230	Great White Pipe Joint Compound with PTFE - 4 oz.	12	Yes
31231	Great White Pipe Joint Compound with PTFE - 8 oz.	12	Yes
31232	Great White Pipe Joint Compound with PTFE - 16 oz.	24	Yes
31233	Great White Pipe Joint Compound with PTFE - 32 oz.	12	Yes



### Seal-Loc Joint Compound



A high performance multi-purpose thread sealant for use on plastic and metal pipe and fittings. Sets soft, and unlike many other joint sealants, no cure time is required; finished joints can be tested and put into service immediately. Does not harden, crack, or separate; non-hazardous, non-flammable, and odor-free.

- Certified to ANSI/NSF Standard 61 for potable water
- CSA listed to Requirement 4-90 for Natural Gas and LP

PART NO	DESCRIPTION	CASE QTY	CASE REQ
4350-01	Seal-Loc Tube - 1.1 oz.	24	Yes
4350-04	Seal-Loc Can - 4.0 oz.	24	Yes
4350-16	Seal-Loc Can - 16 oz.	12	Yes



### Leak Lock Joint Compound



A resin based soft-setting brushable paste pipe joint compound resistant to refrigerants, oils, water and most chemicals, liquids and gases. Ideal for joining all metals, plastics and other materials. Does not harden or become brittle. Adheres to all clean surfaces; prevents vibration from loosening nuts, bolts, plugs, and fittings.

PART NO	DESCRIPTION	CASE QTY	CASE REQ
85-10001	Leak Lock Tube - 1.33 oz.	12	Yes
85-10004	Leak Lock Can - 4 oz.	12	Yes
85-10016	Leak Lock Can - 16 oz.	12	Yes



### Thread Sealing Tape - White PTFE

PART NO	WIDTH (IN)	ROLL LENGTH (IN)	COLOR	BACKING	AGENCY CERTIFICATION	CASE QTY	CASE REQ
AP10357	1/2	60	White	White Teflon - TPFE	—	—	—
686027	1/2	260	White	White Teflon - TPFE	—	12	Yes
686028	1/2	520	White	White Teflon - TPFE	—	12	Yes

**THREAD SEALANTS & JOINT COMPOUNDS**



**Thread Sealing Tape – Yellow PTFE (Gas)**

PART NO	WIDTH (IN)	ROLL LENGTH (IN)	COLOR	BACKING	AGENCY CERTIFICATION	CASE QTY	CASE REQ
AP10358	1/2	260	Yellow	Yellow Teflon TPEE	UL listed - gas line thread seal material	—	—

**PLASTIC PIPE CEMENTS AND PRIMERS**



**All-Purpose Regular Clear Cement**



- Medium-bodied milky clear cement
- Recommended for pipe and fittings for potable water, pressure pipe, gas, conduit, and DWV
- Meets ASTM D-2564, D-2235, F-493

PART NO	VENDOR PART NO	CONTAINER SIZE (OZ)	APPLICATIONS	MAX PIPE DIA SCHEDULE 40/80 (IN)	STORAGE/APP TEMP (°F)	CASE QTY	CASE REQ
670003	30818	4	ABS, PVC, CPVC	6/6	40 to 110	24	Yes
670002	30821	8	ABS, PVC, CPVC	6/6	40 to 110	24	Yes
670001	30834	16	ABS, PVC, CPVC	6/6	40 to 110	24	Yes
670000	30847	32	ABS, PVC, CPVC	6/6	40 to 110	12	Yes



**PVC Regular Clear Cement**



- Regular-bodied clear cement
- Recommended for all grades of pipe and fittings for pipe and fittings, potable water, pressure pipe, gas, conduit, and DWV
- Sets up quickly
- No primer needed on non-pressure DWV less than 4 in. where local codes permit
- Meets ASTM D-2564; NSF Standard 61 for PW, DWV, SEWER; IAPMO listed

PART NO	VENDOR PART NO	CONTAINER SIZE (OZ)	APPLICATIONS	MAX PIPE DIA SCHEDULE 40/80 (IN)	STORAGE/APP TEMP (°F)	CASE QTY	CASE REQ
670008	31012	4	PVC	4/2	40 to 110	24	Yes
670007	31013	8	PVC	4/2	40 to 110	24	Yes
670006	31014	16	PVC	4/2	40 to 110	24	Yes
670005	31015	32	PVC	4/2	40 to 110	12	Yes
670004	31016	128	PVC	4/2	40 to 110	6	Yes



**PVC Heavy Duty Clear Cement**



- Heavy-bodied clear cement for PVC pipe and fittings
- Recommended for pipe and fittings for potable water, pressure pipe, gas, conduit, and DWV
- Thick formula fills gaps in large diameter pipe and loose fitting joints
- Meets ASTM D-2564; NSF Standard 61 for PW, DWV, SEWER; IAPMO listed

PART NO	VENDOR PART NO	CONTAINER SIZE (OZ)	APPLICATIONS	MAX PIPE DIA SCHEDULE 40/80 (IN)	STORAGE/APP TEMP (°F)	CASE QTY	CASE REQ
670024	30850	4	PVC	12/12	40 to 110	24	Yes
670025	30863	8	PVC	12/12	40 to 110	24	Yes
670026	30876	16	PVC	12/12	40 to 110	24	Yes
670027	31008	32	PVC	12/12	40 to 110	12	Yes



**PVC All-Weather Cement**



- Medium-bodied clear cement
- Recommended for pipe and fittings for potable water, pressure pipe, gas, conduit and DWV
- Formulated for fast initial set-up at low temperatures
- Meets ASTM D-2564; NSF Standard 61 for PW, DWV, SEWER; IAPMO listed

PART NO	VENDOR PART NO	CONTAINER SIZE (OZ)	APPLICATIONS	MAX PIPE DIA SCHEDULE 40/80 (IN)	STORAGE/APP TEMP (°F)	CASE QTY	CASE REQ
670010	31132	16	PVC	6/6	-15 to 110	24	Yes
670009	31133	32	PVC	6/6	-15 to 110	12	Yes

**PLASTIC PIPE CEMENTS AND PRIMERS**



**PVC Rain-R-Shine Blue Cement**



- Medium-bodied blue colored cement
- Recommended for pipe and fittings for potable water, pressure pipe, gas, conduit, and DWV
- Very fast-setting cement formulated for wet conditions and/or quick pressurization and fast installation
- No primer needed on non-pressure DWV where local codes permit
- Meets ASTM D-2564; NSF Standard 61 for PW, DWV, SEWER; IAPMO listed

PART NO	VENDOR PART NO	CONTAINER SIZE (OZ)	APPLICATIONS	MAX PIPE DIA SCHEDULE 40/80 (IN)	STORAGE/APP TEMP (°F)	CASE QTY	CASE REQ
670016	30891	8	PVC	6/6	40 to 110	24	Yes
670015	30893	16	PVC	6/6	40 to 110	24	Yes
670014	30894	32	PVC	6/6	40 to 110	12	Yes



**PVC Medium Gray Cement**



- Medium-bodied gray colored cement
- Recommended for pipe and fittings potable water, pressure pipe, gas, conduit and DWV
- Meets ASTM D-2564; NSF Standard 61 for PW, DWV, SEWER; IAPMO listed

PART NO	VENDOR PART NO	CONTAINER SIZE (OZ)	APPLICATIONS	MAX PIPE DIA SCHEDULE 40/80 (IN)	STORAGE/APP TEMP (°F)	CASE QTY	CASE REQ
670013	30886	32	PVC	6/6	40 to 110	12	Yes



**CPVC Medium Orange Cement**



- Medium-bodied orange colored cement
- For CTS (Copper Tube Size) and Schedule 80 potable water pressure pipe
- Meets ASTM F-493; NSF Standard 61 for PW, DWV, SEWER; IAPMO listed

PART NO	VENDOR PART NO	CONTAINER SIZE (OZ)	APPLICATIONS	MAX PIPE DIA SCHEDULE 40/80 (IN)	STORAGE/APP TEMP (°F)	CASE QTY	CASE REQ
670012	31128	4	CPVC	6/6	40 to 110	24	Yes
670011	31129	8	CPVC	6/6	40 to 110	24	Yes



**Clear Cleaner**



Clear liquid cleaner formulated to remove dirt and oil from the surface of the piping in preparation for solvent welding.

PART NO	VENDOR PART NO	CONTAINER SIZE (OZ)	APPLICATIONS	MAX PIPE DIA SCHEDULE 40/80 (IN)	STORAGE/APP TEMP (°F)	CASE QTY	CASE REQ
523003	30782	8	ABS, PVC, CPVC	—	40 to 110	24	Yes
523002	30795	16	ABS, PVC, CPVC	—	40 to 110	24	Yes
523001	30805	32	ABS, PVC, CPVC	—	40 to 110	12	Yes
523000	30766	128	ABS, PVC, CPVC	—	40 to 110	6	Yes



**Purple Primer - NSF Listed**



Purple-tinted primer formulated to remove dirt and oil from the surface of piping, as well as soften the piping, in preparation for solvent welding. Purple pigment provides verification that primer has been applied to the pipe surface. Meets ASTM F-656; NSF Standard 61 for PW, DWV, SEWER; IAPMO listed.

PART NO	VENDOR PART NO	CONTAINER SIZE (OZ)	APPLICATIONS	MAX PIPE DIA SCHEDULE 40/80 (IN)	STORAGE/APP TEMP (°F)	CASE QTY	CASE REQ
523007	30756	8	PVC, CPVC	—	40 to 110	24	Yes
523006	30757	16	PVC, CPVC	—	40 to 110	24	Yes
523005	30758	32	PVC, CPVC	—	40 to 110	12	Yes
523004	30759	128	PVC, CPVC	—	40 to 110	6	Yes

**RED EPOXY REPAIR KIT**



High performance heat-cured two-part epoxy kit (two 1/2 oz. tubes).



- Exhibits color change when cured (turns gold)
- Suitable for temperatures from -100 to 300°F
- Controlled curing time; may be cured with a hot air gun or open flame in minutes
- Working pressure in excess of 3000 psi; tensile strength of 6000 psi
- Use on all metals and rigid plastics; oil, gas, fuel, and solvent resistant

PART NO	DESCRIPTION	CASE QTY	CASE REQ
85-12001	Red Epoxy Repair Kit (1 oz.)	12	Yes

**QUICK SEAL PIPE REPAIR**



Quick Seal Pipe Repair is a knitted fiberglass tape that is impregnated with polyurethane resin. It has been developed for quick, in-the-field repair of leaks. Bonds to all types of pipes; can be used on cold or hot water pipes as well as refrigerant applications. It is a fast, durable and cost effective pipe repair system. Chemical and UV resistant; ideal for refrigeration, plumbing, industrial, commercial, mining, marine, municipal and residential applications. It is also UL classified to ANSI/NSF Standard 61 as safe for potable water.



PART NO	DESCRIPTION	CASE QTY	CASE REQ
4299-10	Quick Seal Pipe Repair - 2 in. x 3 ft. Wrap	6	Yes

**OEM TOUCH-UP PAINT**

- Exact color matched OEM touch-up paint for Rheem, Ruud, and WeatherKing equipment
- Available in both aerosol and paint pens



**Aerosol Spray Cans**



PART NO	DESCRIPTION
52-18662-48	Aerosol Touch-up Paint - Neutra Green (12 oz.)
523009	Aerosol Touch-up Paint - ICECO Gray (12 oz.)
523012	Aerosol Touch-up Paint - Platinum Metallic (12 oz.)
523014	Aerosol Touch-up Paint - Private Label Gray (12 oz.)
523016	Aerosol Touch-up Paint - Bronze (12 oz.)

**Paint Pens**



PART NO	DESCRIPTION	CASE QTY	CASE REQ
523010	Paint Pen Touch-up Paint - Neutra Green - 0.3 oz.	5	Yes
523011	Paint Pen Touch-up Paint - ICECO Gray - 0.3 oz.	5	Yes
523013	Paint Pen Touch-up Paint - Platinum Metallic - 0.3 oz.	5	Yes
523015	Paint Pen Touch-up Paint - Private Label Gray - 0.3 oz.	5	Yes
523017	Paint Pen Touch-up Paint - Bronze (0.3 oz.)	5	Yes