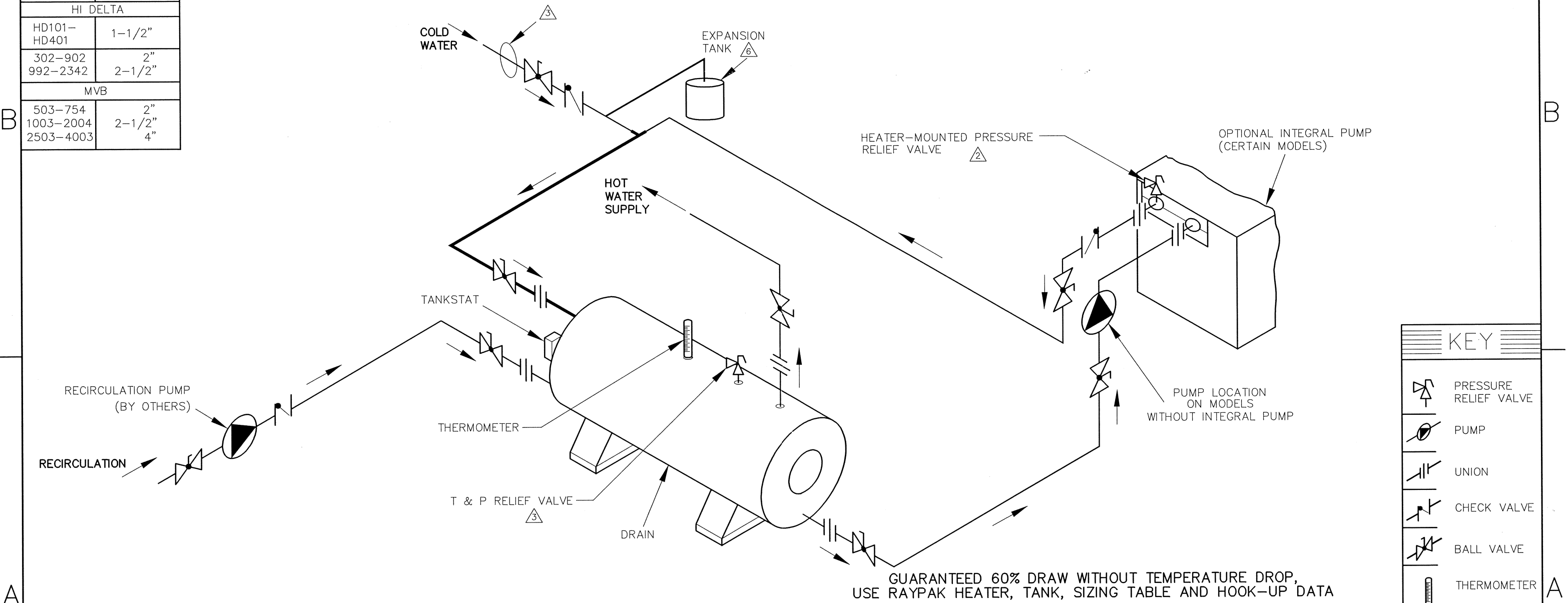


PIPE SIZES	
HEATER	
RAYTHERM	
133	1-1/4"
181-401	1-1/2"
514-824	2"
926-1826	2-1/2"
2100-4001	3"
HI DELTA	
HD101-HD401	1-1/2"
302-902	2"
992-2342	2-1/2"
MVB	
503-754	2"
1003-2004	2-1/2"
2503-4003	4"

THIS PIPING DIAGRAM IS RAYPAK'S RECOMMENDATION AND IS NOT INTENDED TO REPLACE AN ENGINEERED PIPING SYSTEM DESIGNED BY A PROFESSIONAL ENGINEER.

REVISIONS				
REV	DESCRIPTION	E.O.	BY	DATE
8	ADDED 2503-4003. NOTE 7 FROM 160F TO 150F.		KA	6-4-14



GUARANTEED 60% DRAW WITHOUT TEMPERATURE DROP, USE RAYPAK HEATER, TANK, SIZING TABLE AND HOOK-UP DATA

- NOTES:
1. PLUMB SWING CHECK VALVE IN GRAVITY-CLOSED POSITION.
 2. PIPE ALL RELIEF VALVES TO DRAIN, OR AS LOCAL CODES REQUIRE.
 3. INSTALL COLD WATER BETWEEN HEATER OUTLET AND TANK.
 4. SEE CHART "PIPE SIZES" FOR PIPE SIZES CALCULATED AT MAXIMUM FLOW, NOT TO EXCEED 7.5 FT/SEC.
 5. STANDARD PUMP SIZING BASED ON 75 EQUIVALENT FEET OF PIPING. IF DISTANCE IS GREATER, THE PUMP MUST BE SIZED TO ACCOMMODATE INCREASE IN PIPING-RELATED LOSSES.
 6. PROVIDE FOR THERMAL EXPANSION OF HOT WATER IF A BACKFLOW PREVENTER, CHECK VALVE, WATER METER OR PRESSURE-REDUCING VALVE IS INSTALLED IN THE COLD WATER LINE.
 7. IF HOT WATER SETPOINT EXCEEDS 150F WITH MAX FLOW, SPECIFY "H" BOILERS INSTEAD OF "WH" WATER HEATERS.

ACAD: 8006.DWG

HEATER SHOWN REPRESENTS VARIOUS MODELS. BECAUSE INDIVIDUAL MODELS WILL VARY IN DESIGN AND SIZING, SEE EACH SPECIFIC HEATER TYPE FOR DETAILS.

8006	UNLESS OTHERWISE SPECIFIED: ALL UNITS ARE IN INCHES FRACTIONS ±1/32 ANGLES ±1° X. = ±.12 X.X = ±.06 X.XX = ±.03 X.XXX = ±.010 DRAFT___ WALL___ RADII___ CONCENTRICITIES .020 DIA. SQUARENESS .015 IN./IN. BREAK EDGES .015 MAX. SURFACE FINISH PER ASME Y14.36M-1996	APPROVED 	DATE 6-18-14		OXNARD, CALIFORNIA	
	CHECKED D BALDWIN	DATE 9-13-01	E.O. SPR			SCALE NONE
	DRAWN D BALDWIN	DATE 9-13-01	THIS DRAWING SUBMITTED UNDER CONFIDENTIAL RELATIONSHIP, AS IT EMBODIES PROPRIETARY INFORMATION, WITH ALL RIGHTS RESERVED BY RAYPAK, INC.			
	TITLE PIPING, UNI-TEMP 60: 1 HTR, 1 H TANK	SIZE B				
MAT'L.	SERIES/MODEL WH	DWG. NO. 8006	REV 8			