

Electric Tankless Water Heater

MODEL	KW	VOLTS	BREAKER	REQUIRED WIRE	WATER CONNECTIONS
POU 3.5	3.5	120	30 A	10 AWG	1/2" NPT
POU 6	6	220	30 A	10 AWG	1/2" NPT



Tested and certified by the Water Quality Association against NSF/ANSI 372 for lead free compliance.

Temperature Rise

The chart below shows the temperature rise each POU model can achieve based on the gallon-per-minute flow rate. POU models do not have self-modulating technology or temperature setting capability. They have a digital display showing the outlet temperature.

Temperature Rise Table. Reflects temperature rise for different models at various flow rates in gallons per minute.

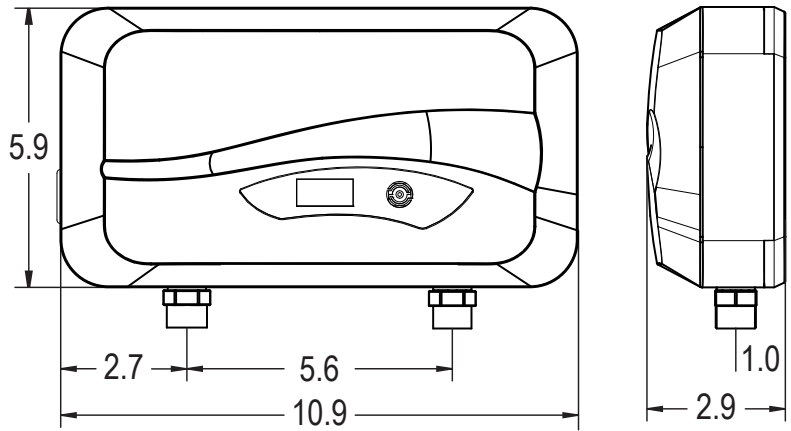
FLOW RATE	POU 3.5	POU 6
0.3 GPM	79.7°F	125.2°F
0.5 GPM	47.8°F	75.1°F
1.0 GPM	23.9°F	25.0°F

Applications

- Hand Sinks
- Wet Bars
- Strip Malls
- Doctor's Offices
- Boats
- Recreational Vehicles
- Schools
- Restaurants
- Airports
- Commercial Facilities
- Hotels
- Daycare Centers

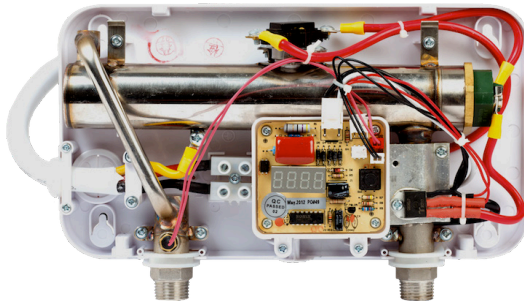
Product Attributes

- On-demand, consistent and endless hot water
- Compact, durable and stylish with digital display
- Dimensions: 6" x 11" x 3"
- 99.8% energy efficient
- Copper heating elements with brass top increase durability and are threaded for easy replacement
- Simple Installation
- 3-ft. electric cable included and 1/2" NPT water connectors for easy flex hose installation
- One year warranty for residential use when registered properly and installed within 30 days of purchase by a licensed professional
- 0.5 GPM aerator included
- Solid, hand-welded exchanger



Product dimensions shown in inches.

Specifications



ECO POU 3.5

Uses one (1) 3.5kW at 120V element.

ECO POU 6

Uses one (1) 5.5kW at 220V element.

Operating Pressure

Minimum	Maximum
25 PSI	150 PSI

Note: Flow Activated at 0.25 GPM

SPECIFICATION	POU 3.5	POU 6
kW	3.5	5.5
Voltage	120	220
Phase	Single	Single
Element	(1) 3.5kW @ 120V	(1) 5.5kW @ 220V
Amperage Draw	29 A	25 A
Required Breaker	30 A	30 A
Required Wire	10 AWG	10 AWG
Weight	4 lb	4 lb
Heat Exchanger	Copper	Copper
Protection	Thermal Auto	Thermal Auto
Energy Efficiency	99.8%	99.8%
Certification	ETL Listed to UL-499 and CAN/CSA-C22.2 No. 64	
Warranty	1 year limited	

EcoSmart Submittal

Engineer/Architect: _____

Job Name/Customer: _____

Location: _____

Contractor: _____

Representative: _____

HEATER SPECIFICATIONS	Quantity	kW	Voltage	AMPS
Model: ECO _____	_____	_____	_____	_____



400 Captain Neville Drive
Waterbury, CT 06705
Toll Free: (877) 474-6473
support@ecosmartus.com
EcoSmartUS.com