

# Power Vent Ultra Low NOx Water Heaters

Professional Achiever™ Power Vent Ultra Low NOx gas water heaters are SCAQMD rule 1121 compliant and offer flexible venting options

## Efficiency

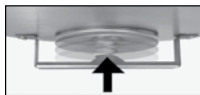
- .64 - .68 UEF
- ENERGY STAR® rated
- More hot water at a low operating cost

## Performance

- FHR: 71 - 86 gallons for natural gas
- Recovery: 36.4 to 38.4 GPH at a 90° F rise, depending on model

## Guardian System™ & Sensor

- Exclusive air/fuel shut-off device for double protection
- Maintenance free – no filter to clean
- Protective control system that disables the heater in the presence of flammable vapor accumulation



Combustion Shut-off System



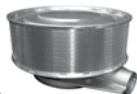
Flame Arrestor Plate



Maintenance Free

## Low Emissions

- Ultra Low NOx radiant burner design
- Stainless steel construction
- SCAQMD Rule 1121 compliant
- Meets 10 ng/J NOx requirements



## Self-Cleaning

- EverKleen™ patented system fights sediment build-up
- Reduces fuel costs
- Provides more hot water

## Flexible Venting Options

- Long venting lengths up to 100 feet
- PVC, ABS, or CPVC vent pipe options
- Vertical or horizontal termination

## Longer Life

- Premium grade anode rod provides long-lasting tank protection

## High Altitude Compliant

- Certified to 5,999 ft. above sea level

## Plus...

- Whisper quiet blower
- Enhanced flow brass drain valve
- Temperature and pressure relief valve included
- Low lead compliant
- Durable spark-to-pilot ignitor

## Warranty

- 6-Year limited tank and parts warranty\*
- With ProtectionPlus™ the 6-year limited tank warranty becomes 10-year

\*See Residential Warranty Certificate for complete information

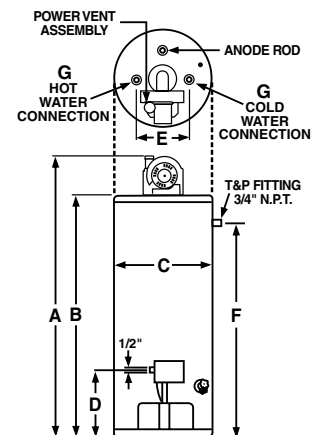
Units meet or exceed ANSI requirements and have been tested according to D.O.E. procedures. Units meet or exceed the energy efficiency requirements of NAECA, ASHRAE standard 90, ICC Code and all state energy efficiency performance criteria.



**Professional Achiever  
Power Vent  
Ultra Low NOx**  
40 and 50-Gallon Capacities  
Up to 38,000 Btu/h  
Natural Gas



LEED Point = 1



See venting information on back.

DESCRIPTION				FEATURES				ROUGHING IN DIMENSIONS (SHOWN IN INCHES)								ENERGY INFO.	
T Y P E	NOMINAL GALLON CAPACITY	RATED GALLON CAPACITY	MODEL NUMBER	GAS INPUT IN THOUS. BTU/H NAT.	RECOVERY IN G.P.H. 90° F RISE NAT.	UEF FIRST HR. DEL. G.P.H. NAT.	EF FIRST HR. DEL. G.P.H. NAT.	HT. TO TOP OF ASSEMBLY A	TANK HEIGHT B	DIAM. C	HT. TO GAS CONN. D	WATER CONN. CENTER E	HT. TO SIDE T&P VALVE F	WATER CONN. SIZE G	SHIP WT. (LBS)	ENERGY FACTOR	UNIFORM ENERGY FACTOR (UEF)
Tall	40	37	PROG40-36U RU67 PV	36	36.4	71	72	69-3/4	60	21	17-3/8	8	54	3/4	170	0.67	0.64
Tall	50	48	PROG50-38U RU67 PV	38	38.4	86	94	69-1/2	59-3/4	23	17-3/8	8	53-3/4	3/4	200	0.67	0.68

Uniform Energy Factor, Energy Factor and rated gallon capacity based on Department of Energy (DOE) requirements.



# Power Vent Ultra Low NOx Water Heaters

## 40 and 50-Gallon Models Maximum and Minimum Vent Lengths

### Maximum and Minimum Vent Lengths for 2" Vents

NUMBER OF 90° ELBOWS WITH VENT TERMINAL	NUMBER OF 45° ELBOWS	MINIMUM PIPE LENGTH REQ. (FT.)	MAXIMUM PIPE LENGTH (FT.)
One (1)	None	3.0	44.0
One (1)	One (1)	3.0	41.0
Two (2)	None	3.0	38.0
Two (2)	One (1)	3.0	35.0
Three (3)	None	3.0	32.0

For the 2" vent, one 90° elbow is approximately equal to 6 feet of pipe. One 45° elbow is approximately equal to 3 feet of pipe.

**NOTICE: The mixing of 2" and 3" vent pipe is not recommended. If 3" pipe is used, a 2" to 3" reducer fitting is recommended at the rubber coupling.**

This water heater is supplied with a 2" Schedule 40 PVC 45° vent terminal. When venting with 3" pipe, a Schedule 40 PVC 45° vent terminal must be used. Screens for both 2" and 3" vent terminals have been included.

### Maximum and Minimum Vent Lengths for 3" Vents

NUMBER OF 90° ELBOWS WITH VENT TERMINAL	NUMBER OF 45° ELBOWS	MINIMUM PIPE LENGTH REQ. (FT.)	MAXIMUM PIPE LENGTH (FT.)
One (1)	None	3.0	95.0
One (1)	One (1)	3.0	92.5
Two (2)	None	3.0	90.0
Two (2)	One (1)	3.0	87.5
Three (3)	None	3.0	85.0
Three (3)	One (1)	3.0	82.5
Four (4)	None	3.0	80.0
Four (4)	One (1)	3.0	77.5
Five (5)	None	3.0	75.0

For the 3" vent, one 90° elbow is approximately equal to 5 feet of pipe. One 45° elbow is approximately equal to 2.5 feet of pipe.

*In keeping with its policy of continuous progress and product improvement, Ruud reserves the right to make changes without notice.*