



The new degree of comfort.™



Residential Gas  
Fury Powered Damper Water Heaters

# The energy efficient Fury® powered damper gas water heaters meet or exceed the latest ENERGY STAR® requirements

## Efficiency

- .67 - .69 EF meet or exceed ENERGY STAR® Phase II requirements, Sept. 2010

## Performance

- FHR: 68 - 89-gallons
- Recovery rate is up to 50.5 gallons at a 90 degree rise, depending on model

## Self-Diagnostic System

- Integrated system control for easy installation and service



## Low Emissions

- Eco-friendly burner, low NOx design
- Meets 40 ng/J NOx requirements

## Technology

- 24 VAC flue damper, 110 VAC outlet required
- Includes 19-foot cord, 3-prong plug
- Standard Cat. I, double-wall, B-vent, 3" (4" adaptor included)



## Guardian System™ & Sensor

- Exclusive air/fuel shut-off device
- Maintenance free – no filter to clean
- Disables the heater in the presence of flammable vapor accumulation

## Longer Life

- Patented magnesium anode rod with resistor protects the tank from rust

## High Altitude Compliant

- Certified to 10,100 ft. above sea level (50-gallon 50K Btu/h model certified to 5,999 feet above sea level)

## Plus...

- Dual certified for both potable water and space heating
- Brass drain valve and temperature and pressure relief valve are included
- Standard replacement parts

## Warranty

- 6-Year limited tank and parts warranty\*
- With ProtectionPlus™ the 6-year limited tank warranty becomes 10-year

\*See Residential Warranty Certificate for complete information

Units meet or exceed ANSI requirements and have been tested according to D.O.E. procedures. Units meet or exceed the energy efficiency requirements of NAECA, ASHRAE standard 90, ICC Code and all state energy efficiency performance criteria.

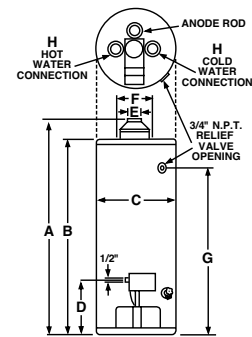


**Fury**  
Powered Damper  
38, 40 and 50-Gallon Capacities  
Up to 50,000 Btu/h  
Natural and LP Gas



## What is a Powered Damper?

The 24-volt powered flue damper is positioned atop the unit. It opens and closes automatically in response to gas-burner activity. When the combustion stops, it signals the damper to close, trapping the heat inside the flue and delivering more heat to the water.



DESCRIPTION		FEATURES					ROUGHING IN DIMENSIONS (SHOWN IN INCHES)										ENERGY INFO.	
TYPE	GAL. CAP.	MODEL NUMBER	GAS INPUT IN THOUS. BTU/H		RECOVERY IN G.P.H. 90° RISE		FIRST HOUR DEL. G.P.H.	HT. TO VENT	TANK HT.	DIAM.	HT. TO GAS CONN.	VENT SIZE	WATER CONN. CNTR.	HT. TO SIDE T&P	WATER CONN.	SHIP. WT. (LBS)	ENERGY FACTOR	AVG. ANN. OPER. COST
			NAT.	LP	NAT.	LP	NAT.	A	B	C	D	E	F	G	H	NAT.	NAT.	
TALL	38	43V40E2	40	36	40.4	36.4	68	62-3/4	57-3/4	19-3/4	14	3 or 4	8	52-1/4	3/4	140	0.69	\$264
	50	43V50E2	40	36	40.4	36.4	84	63	58	21-3/4	14	3 or 4	8	52-1/2	3/4	160	0.67	\$272
	50	43V50-50E2	50	-	50.5	-	87	63-1/2	58	21-3/4	14	4	8	52-1/2	3/4	160	0.67	\$272
SHORT	40	43V40SE2	40	36	40.4	36.4	72	55-1/2	50-1/2	21-3/4	14	3 or 4	8	44	3/4	140	0.67	\$272
	50	43V50SE2	40	36	40.4	36.4	89	55-1/2	50-1/2	23-3/4	14	3 or 4	8	44	3/4	160	0.67	\$272

Specify LP gas when ordering. Add "P" suffix to the model number. Example: 43VR40PE2.

Energy Factor and Average Annual Operating Costs based on D.O.E. (Department of Energy) test procedures. D.O.E. national average fuel rate natural gas \$1.218/therm; LP \$1.87/gallon.

*In keeping with its policy of continuous progress and product improvement, Rheem reserves the right to make changes without notice.*

Rheem Water Heating • 101 Bell Road  
Montgomery, Alabama 36117-4305 • www.rheem.com



INTEGRATED HOME COMFORT