



The new degree of comfort.™



Residential Gas
Imperial Ultra Low NOx Water Heaters

The Imperial ultra low NOx gas water heater line is SCAQMD rule 1121 compliant and features a 10 year warranty

Efficiency

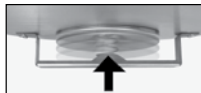
- .56 - .62 EF
- More hot water at a low operating cost

Performance

- FHR: 53 - 91 gallons for natural gas
- Recovery rate is 30.3 - 40.4 gallons for natural gas at a 90 degree rise

Guardian System™ & Sensor

- Exclusive air/fuel shut-off device for double protection
- Maintenance free – no filter to clean



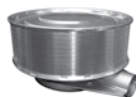
Combustion Shut-off System



Flame Arrestor Plate

Low Emissions

- Ultra Low NOx radiant burner design
- Stainless steel construction
- SCAQMD Rule 1121 compliant
- Meets 10 ng/J NOx requirements



Self-Cleaning

- EverKleen™ patented system fights sediment build-up
- Reduces fuel costs
- Provides more hot water

Easy to Light

- No matches required

Longer Life

- Patented magnesium anode rod with resistor protects the tank from rust

High Altitude Compliant

- Certified to 10,200 ft. above sea level

Plus...

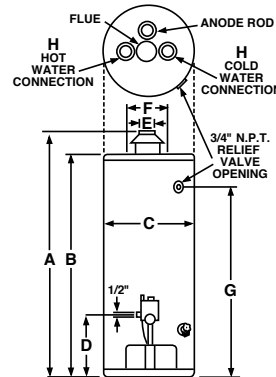
- Brass drain valve and temperature and pressure relief valve are included
- Exclusive Rheemglas® lining

Warranty

- 10-Year limited tank and parts warranty*

*See Residential Warranty Certificate for complete information

Units meet or exceed ANSI requirements and have been tested according to D.O.E. procedures. Units meet or exceed the energy efficiency requirements of NAECA, ASHRAE standard 90, ICC Code and all state energy efficiency performance criteria.



**Imperial
Ultra Low NOx**
28, 38, 40, 48 and
50-Gallon Capacities
Natural Gas



DESCRIPTION		FEATURES			ROUGHING IN DIMENSIONS (SHOWN IN INCHES)									ENERGY INFO.		
T Y P E	GAL. CAP.	MODEL NUMBER	GAS INPUT IN THOUS. BTU/H NAT.	RECOVERY IN G.P.H. 90° RISE NAT.	FIRST HOUR DEL. G.P.H. NAT.	HT. TO VENT A	TANK HT. B	DIAM. C	HT. TO GAS CONN. D	VENT SIZE E	WATER CONN. CNTR. F	HT. TO SIDE T&P G	WATER CONN. H	SHIP. WT. (LBS)	ENERGY FACTOR NAT.	AVG. ANN. OPER. COST NAT.
T A L L	28	22X30FN	30	30.3	53	59	56-1/4	16-1/8	17-3/8	3 or 4	8	50	3/4	105	0.62	\$294
	38	22X40FN	38	38.4	72	60-5/8	57-3/4	18-1/8	17-3/8	3 or 4	8	51-5/8	3/4	125	0.60	\$304
	40	22XR40FN	38	38.4	73	63	60-1/8	21	17-3/8	3 or 4	8	54	3/4	140	0.62	\$294
	48	22X50FN	40	40.4	91	60-5/8	57-7/8	20-1/8	17-3/8	3 or 4	8	51-3/4	3/4	135	0.58	\$315
	50	22XR50FN	36	36.4	91	62-5/8	59-7/8	23	17-3/8	3 or 4	8	53-5/8	3/4	170	0.62	\$294
SHORT	38	22X40SFN	36	36.4	68	51-7/8	49-1/8	20-1/8	17-3/8	3 or 4	8	43	3/4	135	0.60	\$304

Energy Factor and Average Annual Operating Costs based on D.O.E. (Department of Energy) test procedures. D.O.E. national average fuel rate natural gas \$1.218/therm; LP \$1.87/gallon.

In keeping with its policy of continuous progress and product improvement, Rheem reserves the right to make changes without notice.

Rheem Water Heating • 101 Bell Road
Montgomery, Alabama 36117-4305 • www.rheem.com



INTEGRATED HOME COMFORT