



The new degree of comfort.™



Residential Gas
Professional Classic Atmospheric
Water Heaters for Manufactured Housing

Professional Classic™ Atmospheric gas water heaters feature the Guardian System™ and are CSA and HUD certified for Manufactured Housing

Efficiency

- .58 - .61 EF

Performance

- FHR: 65 gallons for 50-gallon model, 59 gallons for 40-gallon model and 48 gallons for 29-gallon model
- Recovery rates: 38.4 for 50-gallon, 34.3 for 40-gallon and 32.3 for 29-gallon natural gas models at a 90 degree rise

Longer Life

- Rheem exclusive R-Tech (resistored) anode rod provides long-lasting tank protection

Guardian System™ & Sensor

- Exclusive air/fuel shut-off device
- Maintenance free – no filter to clean
- Disables the heater in the presence of flammable vapor accumulation

Flexibility

- Field convertible controls and burner assembly for natural gas or LP operation included

Low Emissions

- Eco-friendly burner, low NOx design

Altitude Certification

- 40 and 50-gallon units is up to 7,700 ft. above sea level
- 29-gallon units is up to 6,000 ft. above sea level
- High altitude models available

Plus...

- Enhanced flow brass drain valve
- Side inlet temperature and pressure relief valve opening
- Factory installed temperature and pressure relief valve – side location
- Low lead compliant
- Two hole top for anode rod and hot water outlet
- Exclusive Rheemglas® tank lining resists corrosion and prolongs tank life
- Piezo ignition – easy light pilot, no matches required
- Cold water inlet – side connection allows for quick, economical hook-up
- Optional leg kit for replacement units
- EverKleen™ patented system fights sediment build-up

Warranty

- 6-Year limited tank and parts warranty*

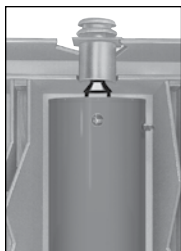
*See Residential Warranty Certificate for complete information

Units meet or exceed ANSI requirements and have been tested according to D.O.E. procedures. Units meet or exceed the energy efficiency requirements of NAECA, ASHRAE standard 90, ICC Code and all state energy efficiency performance criteria.



Professional Classic Atmospheric for Manufactured Housing

29, 40 and 50-Gallon Capacities
Natural and LP Gas



Draft Diverter

Improved design provides efficient heating with down-draft protection.

See dimensions chart on back.



INTEGRATED HOME COMFORT



The new degree of comfort.™



Residential Gas
Professional Classic Atmospheric
Water Heaters for Manufactured Housing

Professional Classic™ Atmospheric for Manufactured Housing Specifications

TYPE	DESCRIPTION		FEATURES						ROUGHING IN DIMENSIONS (SHOWN IN INCHES)							ENERGY INFO.	
	GAL. CAP.	MODEL NUMBER	GAS INPUT IN THOUS. BTU/H		RECOVERY IN G.P.H. 90° RISE		FIRST HOUR DEL. G.P.H.		HT. TO VENT A	TANK HT. B	DIAM. C	HT. TO GAS CONN. D	VENT SIZE E	WATER CONN. CNTR. F	HT. TO SIDE T&P VALVE G	SHIP. WT. (LBS)	ENERGY FACTOR
			NAT.	LP	NAT.	LP	NAT.	LP									
Tall	29	PROG30-32N RH61 MH	32	30	32.3	30.3	48	-	59-3/4	56-3/8	16-1/8	14-1/2	3	8	50-3/4	100	0.61
Tall	40	PROG40-34N RH59 MH	34	32	34.3	32.3	59	-	61-3/4	58-3/8	18-1/8	14-1/2	3	8	51-3/8	120	0.59
Tall	50	PROG50-38N RH58 MH	38	36	38.4	36.4	65	-	61-1/2	58-1/4	20-1/8	14-1/2	3	8	51-3/8	130	0.58

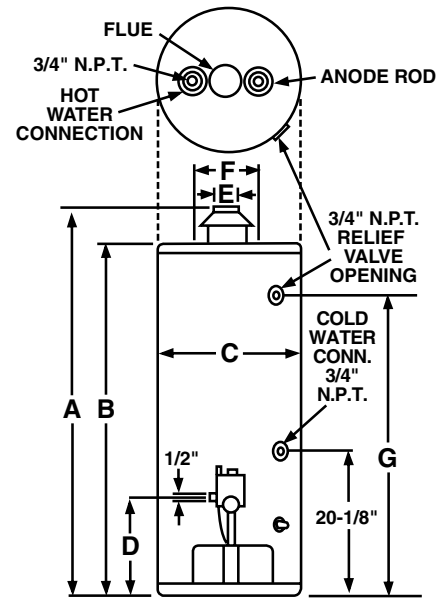
Energy Factor based on D.O.E. (Department of Energy) test procedures.

ROOF JACKS PART NO.	ROOF OPENING TO FLOOR DIM.	ROOF JACK ADJ. RANGE
AP12118B*	98" Min./126" Max.	16" Min./32" Max.
AP12118C*	112" Min./154" Max.	30" Min./60" Max.
AP12118D*	130" Min./189" Max.	48" Min./95" Max.
AP12119B†	94" Min./106" Max.	12"

*Adjustable length roof jacks

†Fixed length roof jacks

Roof jack must be ordered separately with 30, 40 and 50-gallon atmospheric models and must be in accordance with instructions furnished with the heater. Clamps and secure strapping are packed in water heater carton.



In keeping with its policy of continuous progress and product improvement, Rheem reserves the right to make changes without notice.

Rheem Water Heating • 101 Bell Road
Montgomery, Alabama 36117-4305 • www.rheem.com



INTEGRATED HOME COMFORT