



The new degree of comfort.™



Residential Gas
Professional Classic
Power Vent Water Heaters

Professional Classic® Power Vent gas water heaters offer up to 100 foot vent runs, energy efficiency and the Guardian System

Efficiency

- .64 - .69 UEF
- ENERGY STAR® rated

Performance

- FHR: 67 - 84 gallons
- Recovery: 32.4 to 42.4 GPH at a 90° F rise

Self-Diagnostic System

- Electronic gas control for improved monitoring and service



Low Emissions

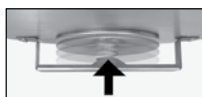
- Eco-friendly burner, low NOx design

Features

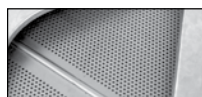
- Uses indoor air for combustion; blower exhausts the flue gases
- Standard 120 VAC electrical connection
- New whisper quiet blower

Guardian System™ & Sensor

- Exclusive air/fuel shut-off device
- Maintenance free – no filter to clean
- Protective control system that disables the heater in the presence of flammable vapor accumulation



Combustion Shut-off System



Flame Arrestor Plate



Maintenance Free

Flexible Venting Options

- Long venting lengths up to 100 equivalent feet
- PVC, ABS, or CPVC vent pipe options
- Vertical or horizontal termination

Longer Life

- Premium grade anode rod provides long-lasting tank protection

High Altitude Compliant

- Tall models certified for applications up to 7,700 ft. above sea level and short models up to 5,999 feet above sea level

Plus...

- Enhanced flow brass drain valve
- Temperature and pressure relief valve included
- Low lead compliant
- Durable Silicon Nitride Ignitor (HSI)
- EverKleen™ patented system fights sediment build-up
- Standard replacement parts

Warranty

- 6-Year limited tank and parts warranty*
- With ProtectionPlus™ the 6-year limited tank warranty becomes 10-year

*See Residential Warranty Certificate for complete information

Units meet or exceed ANSI requirements and have been tested according to D.O.E. procedures. Units meet or exceed the energy efficiency requirements of NAECA, ASHRAE standard 90, ICC Code and all state energy efficiency performance criteria.



Professional Classic Power Vent

40 and 50-Gallon Capacities
Up to 42,000 Btu/h
Natural and LP Gas



LEED Point = 1

See specifications chart on back.



INTEGRATED HOME COMFORT



The new degree of comfort.™

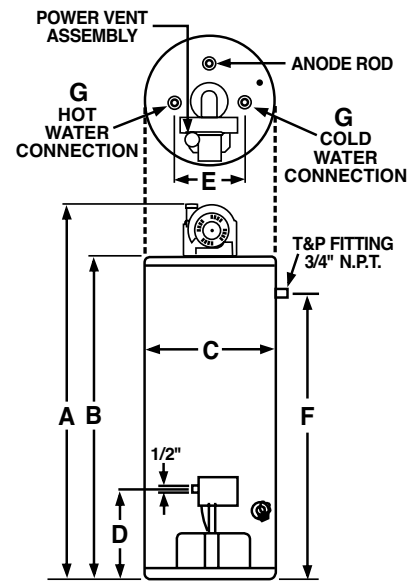


Residential Gas
Professional Classic
Power Vent Water Heaters

Professional Classic® Power Vent Specifications

| DESCRIPTION | | | | FEATURES | | | | | | | | ROUGHING IN DIMENSIONS (SHOWN IN INCHES) | | | | | | | | ENERGY INFO. | |
|-------------|-------------------------|-----------------------|---------------------|---------------------------|----|-------------------------------|------|---------------------------|----|--------------------------|----|--|---------------|---------|--------------------|----------------------|-------------------------|--------------------|----------------|---------------|-----------------------------|
| TYPE | NOMINAL GALLON CAPACITY | RATED GALLON CAPACITY | MODEL NUMBER | GAS INPUT IN THOUS. BTU/H | | RECOVERY IN G.P.H. 90° F RISE | | UEF FIRST HR. DEL. G.P.H. | | EF FIRST HR. DEL. G.P.H. | | HEIGHT TO TOP OF ASSEMBLY A | TANK HEIGHT B | DIAM. C | HT. TO GAS CONN. D | WATER CONN. CENTER E | HT. TO SIDE T&P VALVE F | WATER CONN. SIZE G | SHIP WT. (LBS) | ENERGY FACTOR | UNIFORM ENERGY FACTOR (UEF) |
| | | | | NAT. | LP | NAT. | LP | NAT. | LP | NAT. | LP | | | | | | | | | | |
| Tall | 40 | 38 | PROG40-40N RH67 PV | 40 | - | 40.4 | - | 67 | - | 68 | - | 67-3/8 | 59 | 19-3/4 | 14 | 8 | 53-1/2 | 3/4 | 140 | 0.67 | 0.64 |
| Tall | 40 | 38 | PROG40-36P RH67 PV | - | 36 | - | 36.4 | - | 67 | - | 68 | 67-3/8 | 59 | 19-3/4 | 14 | 8 | 53-1/2 | 3/4 | 140 | 0.67 | 0.64 |
| Tall | 50 | 48 | PROG50-42N RH67 PV | 42 | - | 42.4 | - | 84 | - | 87 | - | 66-3/8 | 58 | 21-3/4 | 14 | 8 | 52-1/2 | 3/4 | 170 | 0.67 | 0.69 |
| Tall | 50 | 48 | PROG50-42P RH67 PV | - | 42 | - | 42.4 | - | 84 | - | 87 | 66-3/8 | 58 | 21-3/4 | 14 | 8 | 52-1/2 | 3/4 | 170 | 0.67 | 0.69 |
| Short | 40 | 38 | PROG40S-36N RH67 PV | 36 | - | 36.4 | - | 72 | - | 73 | - | 62-1/2 | 51-1/4 | 21-3/4 | 14 | 8 | 44-1/4 | 3/4 | 155 | 0.67 | 0.64 |
| Short | 40 | 38 | PROG40S-32P RH67 PV | - | 32 | - | 32.4 | - | 72 | - | 73 | 62-1/2 | 51-1/4 | 21-3/4 | 14 | 8 | 44-1/4 | 3/4 | 155 | 0.67 | 0.64 |
| Short | 50 | 48 | PROG50S-36N RH67 PV | 36 | - | 36.4 | - | 84 | - | 87 | - | 62-1/2 | 51-1/4 | 23-3/4 | 14 | 8 | 44 | 3/4 | 175 | 0.67 | 0.69 |
| Short | 50 | 48 | PROG50S-32P RH67 PV | - | 32 | - | 32.4 | - | 84 | - | 87 | 62-1/2 | 51-1/4 | 23-3/4 | 14 | 8 | 44 | 3/4 | 175 | 0.67 | 0.69 |

Uniform Energy Factor, Energy Factor and rated gallon capacity based on Department of Energy (DOE) requirements.



Maximum and Minimum Vent Lengths for 2" Vents

| NUMBER OF 90° ELBOWS WITH VENT TERMINAL | NUMBER OF 45° ELBOWS | MINIMUM PIPE LENGTH REQ. (FT.) | MAXIMUM PIPE LENGTH (FT.) 0' - 2000' | MAXIMUM PIPE LENGTH (FT.) 2000' - 7700' * |
|---|----------------------|--------------------------------|--------------------------------------|---|
| One (1) | None | 4.0 | 44.0 | 24.0 |
| One (1) | One (1) | 4.0 | 41.0 | 21.0 |
| Two (2) | None | 4.0 | 38.0 | 18.0 |
| Two (2) | One (1) | 4.0 | 35.0 | 15.0 |
| Three (3) | None | 4.0 | 32.0 | 12.0 |

For the 2" vent, one 90° elbow is approximately equal to 6 feet of pipe.
One 45° elbow is approximately equal to 3 feet of pipe.
*2,000' - 6,000' for short models.

Maximum and Minimum Vent Lengths for 3" Vents

| NUMBER OF 90° ELBOWS WITH VENT TERMINAL | NUMBER OF 45° ELBOWS | MINIMUM PIPE LENGTH REQ. (FT.) | MAXIMUM PIPE LENGTH (FT.) 0' - 2000' | MAXIMUM PIPE LENGTH (FT.) 2000' - 7700' * |
|---|----------------------|--------------------------------|--------------------------------------|---|
| One (1) | None | 5.0 | 95.0 | 75.0 |
| One (1) | One (1) | 5.0 | 92.5 | 72.5 |
| Two (2) | None | 5.0 | 90.0 | 70.0 |
| Two (2) | One (1) | 5.0 | 87.5 | 67.5 |
| Three (3) | None | 5.0 | 85.0 | 65.0 |

For the 3" vent, one 90° elbow is approximately equal to 5 feet of pipe.
One 45° elbow is approximately equal to 2.5 feet of pipe.
*2,000' - 6,000' for short models.

In keeping with its policy of continuous progress and product improvement, Rheem reserves the right to make changes without notice.

Rheem Water Heating • 101 Bell Road
Montgomery, Alabama 36117-4305 • www.rheem.com



INTEGRATED HOME COMFORT