



The new degree of comfort.™

SUBMITTAL COVER SHEET

PROJECT NAME _____

LOCATION _____

ARCHITECT _____

ENGINEER _____

CONTRACTOR _____

SUBMITTED BY _____ DATE _____

UNIT SUMMARY

Quantity						
Unit Designation						
Model No.						
Total Cooling						
Sensible Cooling						
Air Ent. Evaporator						
Air Lvg. Evaporator						
Heating Input						
Heating Output						
CFM/ESP						
EER/SEER						
Electrical						
Minimum Ampacity						
Min.-Max. Breaker						
Net Unit Weight						
Accessory						
Catalog Form Number						

ACCESSORIES:

NOTES:



INTEGRATED HOME COMFORT

MODULATING UPFLOW GAS FURNACE EQUIPPED: WITH THE *COMFORT CONTROL² SYSTEMTM*:

RGFG- Series

95% A.F.U.E.† Input Rates 60 to 120 kBTU [17.58 to 35.17 kW]

JOB NAME _____ MODEL NO. _____
 CONTRACTOR _____ OUTDOOR UNIT MODEL NO. _____
 ENGINEER _____ LOCATION _____
 SUBMITTED FOR APPROVAL RECORD ORDER NO. _____
 DATE _____

Equipped with the *Comfort Control² SystemTM*

- Serial communication enabled
- Increased system reliability and efficiency
- 28 on-board diagnostic and operating codes
- *Active ProtectionTM* with homeowner "Call for Service" alert
- Dual 7-segment LED display

UNIT DATA

HEATING PERFORMANCE

TOTAL CAPACITY INPUT* MBH [kW]
 TOTAL CAPACITY OUTPUT* .. MBH [kW]
 DESIGN TEMP. RISE °F [°C] DB
 AFUE %
 CALIFORNIA SEASONAL EFFICIENCY %
 (*uses blower motor heat)

SUPPLY AIR BLOWER PERFORMANCE

TOTAL AIR SUPPLY CFM [L/s]
 TOTAL RESISTANCE EXTERNAL TO UNIT IWG
 BLOWER SPEED RPM
 POWER OUTPUT REQUIREMENT .. BHP
 MOTOR RATING HP [W]
 POWER INPUT REQUIREMENT kW

ELECTRICAL DATA

POWER SUPPLY Hz
 TOTAL UNIT AMPACITY AMPS
 MINIMUM WIRE SIZE AWG
 MAXIMUM OVERCURRENT DEVICE FUSES/HACR BREAKER AMPS

FEATURES FOR RGFG-

- The *Comfort Control² SystemTM* provides 28 on-board diagnostic codes and fault history codes by detecting system and electrical problems. "Call for Service" alert notification is sent to the thermostat to alert the homeowner of required service.
- Serial Communication Enhanced – When installed with a Serial Communicating Condensing Unit and user interface control (-HC-TST550CMMS) 500 Series thermostat this unit offers 4 or 2 wire installation, auto-configuration, and diagnostic messaging with full communicating capability.
- Heat exchanger is constructed of aluminized steel for maximum corrosion resistance and thermal fatigue reliability.
- Modulating Function: when used with a modulating or communicating thermostat, modulation rate between 40% and 100% of total capacity.
- Two-stage Function: when used with a two-stage thermostat, furnace operates at 40% on first stage, and stages up to 65%, then 100% for second stage.
- Multistage Function: when used with a single-stage thermostat, furnace functions as a three stage furnace operating at 40%, 65% and 100% of total capacity.
- Reduced firing rates, electrically efficient ECM 3.0 motor, and solid doors provide the ultimate in quiet operation.
- Low speed constant fan.
- Constant temperature rise for superior comfort.
- Seven segment LED for system diagnostics.
- Diagnostic history for troubleshooting.
- Variable speed induced draft motor.
- Hot surface ignition with remote sense.
- Optional indoor or outdoor combustion air.

†A.F.U.E. (Annual Fuel Utilization Efficiency) calculated in accordance with Department of Energy test procedures.

FIELD INSTALLED ACCESSORIES

- Vent Termination Kits Concentric:
 Vertical/Horizontal = RXGY-G02, RXGY-D02, RXGY-E03
 Condensate Pump Kit: RXGY-B01
 Neutralizer Kit: RXGY-A01
 Return Air Plenum (RXGR-C17B, 21B, 24B)
 External Bottom Filter Rack: RXGF-CB
 Communicating Modulating Furnace Thermostat:
 (-)HC-TST550CMMS
 External Side Filter Rack: RXGF-CA

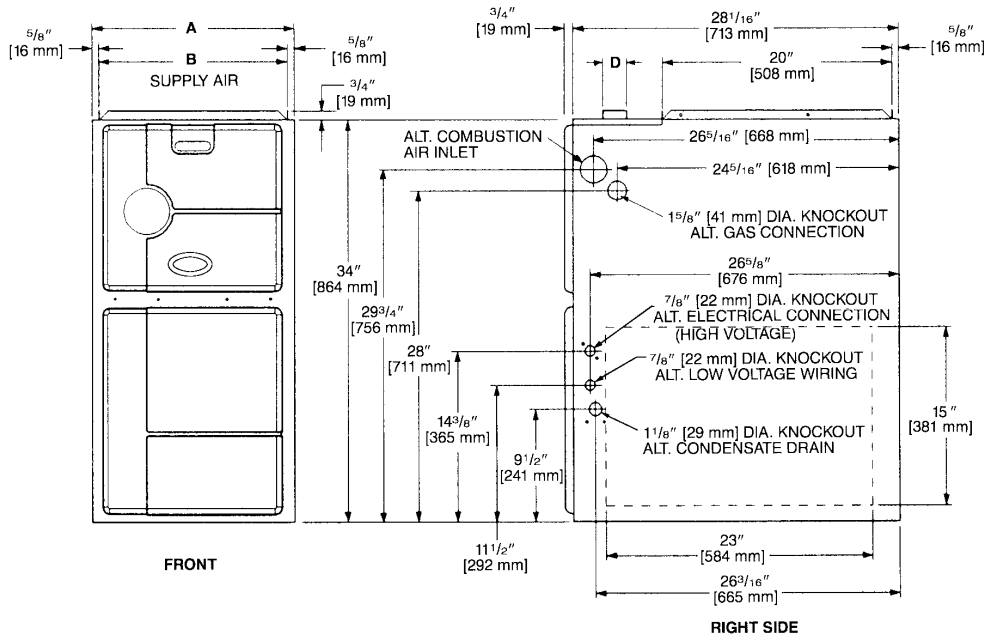
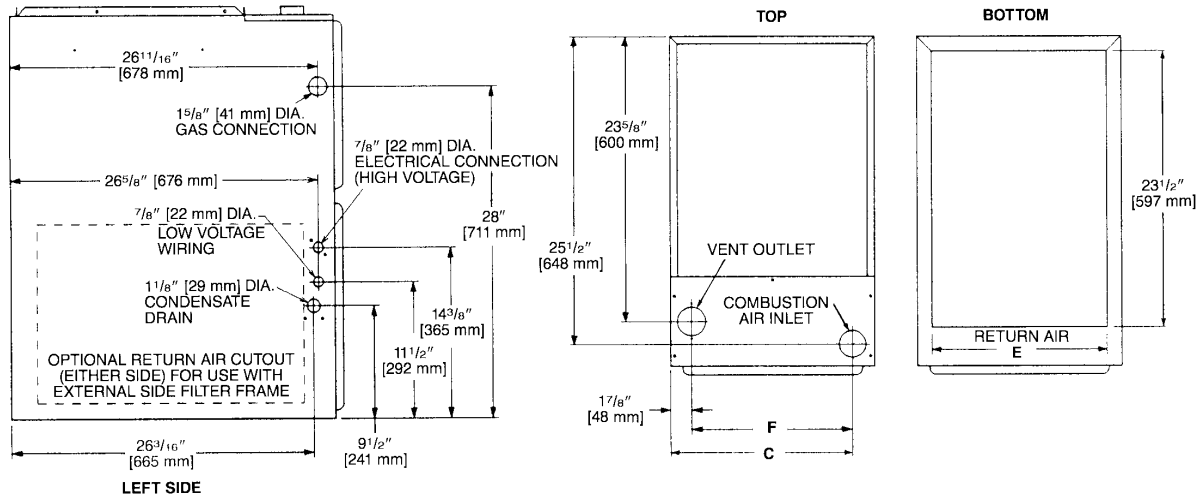
FILTER RACK FILTER SIZES* INCHES [mm]		
MODEL RGFG-	RXGF-CB (BOTTOM)	RXGF-CA (SIDE)
06	15 ³ / ₄ x 25 [400 x 635]	15 ³ / ₄ x 25 [400 x 635]
07	15 ³ / ₄ x 25 [400 x 635]	15 ³ / ₄ x 25 [400 x 635]
09	19 ¹ / ₄ x 25 [489 x 635]	15 ³ / ₄ x 25 [400 x 635]
10	19 ¹ / ₄ x 25 [489 x 635]	15 ³ / ₄ x 25 [400 x 635]
12	22 ³ / ₄ x 25 [578 x 635]	15 ³ / ₄ x 25 [400 x 635]

*Filter racks are shipped without filters.
 Filters shipped with furnace may be used or a suitable 1" [25.4 mm] filter.



[] Designates Metric Conversions

UPFLOW MODELS



MODEL RGFG-	A	B	C	D	E	F	LEFT SIDE	MINIMUM CLEARANCE (IN.) [mm]				
								RIGHT SIDE	BACK	TOP	FRONT	VENT
06	17 ¹ / ₂ [445]	16 ³ / ₈ [416]	15 ⁵ / ₈ [397]	2 [51]	15 [422]	13 ¹³ / ₁₆ [351]	0	0	0	1 [25]	2 [51]	0
07	17 ¹ / ₂ [445]	16 ³ / ₈ [416]	15 ⁵ / ₈ [397]	2 [51]	15 [422]	13 ¹³ / ₁₆ [351]	0	0	0	1 [25]	2 [51]	0
09	21 [533]	19 ⁷ / ₈ [505]	19 ¹ / ₈ [487]	2 [51]	18 ¹ / ₂ [511]	17 ⁵ / ₁₆ [440]	0	0	0	1 [25]	2 [51]	0
10	21 [533]	19 ⁷ / ₈ [505]	19 ¹ / ₈ [487]	2 [51]	18 ¹ / ₂ [511]	17 ⁵ / ₁₆ [440]	0	0	0	1 [25]	2 [51]	0
12	24 ¹ / ₂ [622]	23 ³ / ₈ [594]	22 ⁵ / ₈ [575]	2 [51]	22 [600]	20 ¹³ / ₁₆ [529]	0	0	0	1 [25]	2 [51]	0

[] Designates Metric Conversions

Before proceeding with installation, refer to installation instructions packaged with each model, as well as complying with all Federal, State, Provincial, and Local codes, regulations, and practices.

"In keeping with its policy of continuous progress and product improvement, Manufacturer reserves the right to make changes without notice."