



The new degree of comfort.™

# SUBMITTAL COVER SHEET

PROJECT NAME \_\_\_\_\_

LOCATION \_\_\_\_\_

ARCHITECT \_\_\_\_\_

ENGINEER \_\_\_\_\_

CONTRACTOR \_\_\_\_\_

SUBMITTED BY \_\_\_\_\_ DATE \_\_\_\_\_

## UNIT SUMMARY

Quantity						
Unit Designation						
Model No.						
Total Cooling						
Sensible Cooling						
Air Ent. Evaporator						
Air Lvg. Evaporator						
Heating Input						
Heating Output						
CFM/ESP						
EER/SEER						
Electrical						
Minimum Ampacity						
Min.-Max. Breaker						
Net Unit Weight						
Accessory						
Catalog Form Number						

**ACCESSORIES:**

**NOTES:**



INTEGRATED HOME COMFORT

# DOWNFLOW GAS FURNACES w/ECM MOTORS:

**RGLT- Series**

**80% A.F.U.E.†**

**Input Rates 75 to 125 kBtu [22 to 37 kW]**

JOB NAME \_\_\_\_\_ MODEL NO. \_\_\_\_\_  
 CONTRACTOR \_\_\_\_\_ OUTDOOR UNIT MODEL NO. \_\_\_\_\_  
 ENGINEER \_\_\_\_\_ LOCATION \_\_\_\_\_  
 SUBMITTED FOR  APPROVAL  RECORD ORDER NO. \_\_\_\_\_  
 DATE \_\_\_\_\_

## UNIT DATA

### HEATING PERFORMANCE

TOTAL CAPACITY INPUT\* ..... MBH [kW]  
 TOTAL CAPACITY OUTPUT\* .. MBH [kW]  
 DESIGN TEMP. RISE ..... °F [°C] DB  
 AFUE ..... %  
 CALIFORNIA SEASONAL EFFICIENCY ..... %  
 (\*uses blower motor heat)

### SUPPLY AIR BLOWER PERFORMANCE

TOTAL AIR SUPPLY ..... CFM [L/s]  
 TOTAL RESISTANCE EXTERNAL TO UNIT ..... IWG  
 BLOWER SPEED ..... RPM  
 POWER OUTPUT REQUIREMENT .. BHP  
 MOTOR RATING ..... HP [W]  
 POWER INPUT REQUIREMENT ..... kW

### ELECTRICAL DATA

POWER SUPPLY ..... Hz  
 TOTAL UNIT AMPACITY ..... AMPS  
 MINIMUM WIRE SIZE ..... AWG  
 MAXIMUM OVERCURRENT DEVICE FUSES/HACR BREAKER ..... AMPS

### CLEARANCES

FRONT SIDE 3" [76.2 mm]  
 RIGHT SIDE 3" [76.2 mm]  
 LEFT SIDE 0" [0 mm]  
 TOP 1" [25.4 mm]

## FEATURES FOR RGLT-

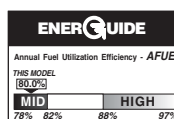
- Innovative design results in reliable, efficient operation at sound levels which provide distinct competitive advantage.
- Patented heat exchanger, constructed of aluminized steel for the maximum in corrosion resistance and thermal fatigue reliability.
- Low profile "34 inch" [864 mm] design is lighter and easier to handle, and leaves room for optional equipment.
- Left or right side gas and electric inlet connections with quick, simple change.
- Direct Spark ignition.
- Integrated board with humidifier and electronic air cleaner hookups.
- Insulated blower compartment helps to reduce jacket loss and noise.
- Pre-paint galvanized steel cabinet.
- Molded permanent filter.
- Grab-holes in doors to aid in easy door removal and replacement.
- ECM X-13 Blower Motor.

A variety of cooling coils and plenums designed to use with *Super Quiet 80™* gas furnaces are available as optional accessories.

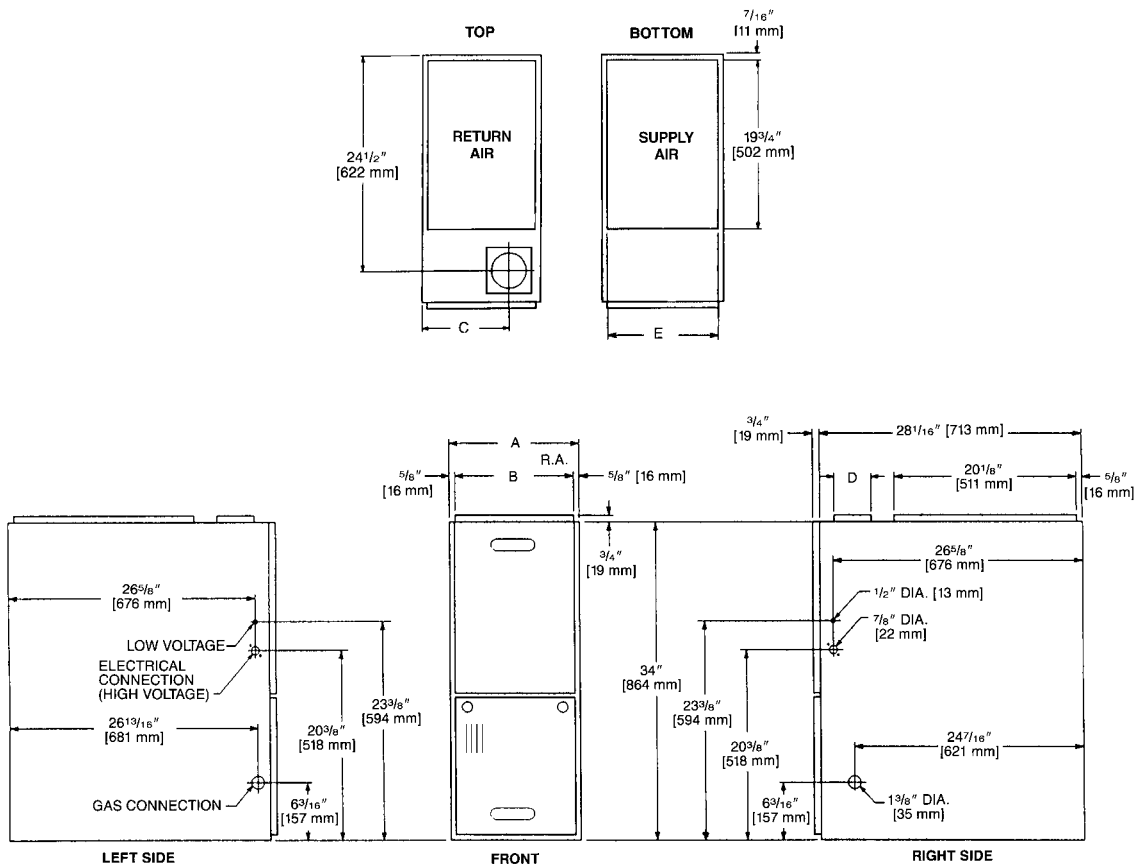
†A.F.U.E. (Annual Fuel Utilization Efficiency) calculated in accordance with Department of Energy test procedures.

## FIELD INSTALLED ACCESSORIES

- Fossil Fuel Kit (RXPFF-F01 and F02) .....   
 Filter Rack (RXGF-CC\*) .....   
 \*Filters available through PROSTOCK®  
 Combustible Floor Base (RXGC-B14, 17, 21, 24) .....



## DOWNFLOW MODELS



### DIMENSIONS AND CLEARANCE TO COMBUSTIBLE MATERIAL (INCHES) [mm]

MODEL RGLT-SERIES	A	B	C	D	E	REDUCED CLEARANCES (IN.) [mm]						
						LEFT SIDE	RIGHT SIDE	BACK	TOP	FRONT	VENT	SHIP. WGTs. (LBS.) [kg]
07 (A)	$17\frac{1}{2}$ [445]	$16\frac{11}{32}$ [415]	$12\frac{1}{8}$ [308]	①	$16\frac{5}{8}$ [422]	0	3 ②	0	1 [25]	3 [76]	6 [152] ③	105 [47.6]
07 (B)	21 [533]	$19\frac{27}{32}$ [504]	$13\frac{7}{8}$ [352]	①	$20\frac{1}{8}$ [511]	0	0	0	1 [25]	3 [76]	6 [152] ③	120 [54.4]
10	21 [533]	$19\frac{27}{32}$ [504]	$13\frac{7}{8}$ [352]	①	$20\frac{1}{8}$ [511]	0	0	0	1 [25]	3 [76]	6 [152] ③	120 [54.4]
12	$24\frac{1}{2}$ [622]	$23\frac{11}{32}$ [593]	$15\frac{5}{8}$ [397]	①	$23\frac{5}{8}$ [600]	0	0	0	1 [25]	3 [76]	6 [152] ③	140 [63.5]

NOTES: ① May require a 3" [76 mm] to 4" [102 mm] or 3" [76 mm] to 5" [127 mm] adapter.

② May be 0" [0 mm] with type B vent.

③ May be 1" [25 mm] with type B vent.

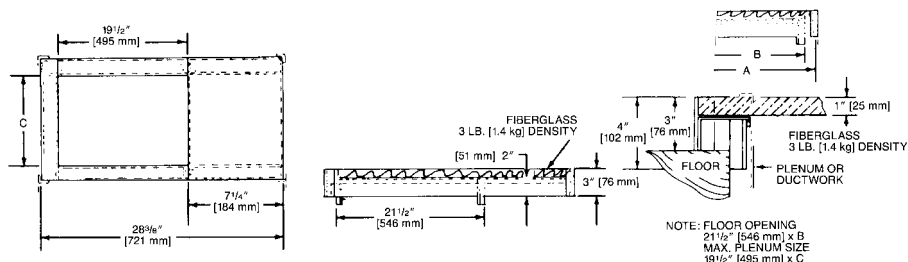
**Furnaces must be vented in accordance with the National Fuel Gas Code, ANSI Z223.1 and/or Can/CGA-B149 Installation Codes and in accordance with local codes.**

[ ] Designates Metric Conversions

**DOWNFLOW WARNING:** Unit design is certified for installation on non-combustible floor. A special factory supplied combustible floor sub-base is required when installing on a combustible floor. Failure to install the sub-base may result in fire, property damage and personal injury.

#### COMBUSTIBLE FLOOR BASE DIMENSIONS

COMBUSTIBLE FLOOR BASE	USE WITH FURNACE SIZES	A IN. [mm]	B IN. [mm]	C IN. [mm]
RXGC-B14	(-)GLT-05	$14\frac{1}{2}$ [368]	$13\frac{1}{4}$ [337]	$11\frac{1}{4}$ [286]
RXGC-B17	(-)GLT-07, (-)GLT-10(-)A	18 [457]	$16\frac{3}{4}$ [425]	$14\frac{3}{4}$ [451]
RXGC-B21	(-)GLT-10(-)B	$21\frac{1}{2}$ [546]	$20\frac{1}{4}$ [514]	$18\frac{1}{4}$ [464]
RXGC-B24	(-)GLT-12, (-)GLT-15	25 [635]	$23\frac{3}{4}$ [603]	$21\frac{3}{4}$ [552]



**Before proceeding with installation, refer to installation instructions packaged with each model, as well as complying with all Federal, State, Provincial, and Local codes, regulations, and practices.**

Rheem Sales Company, Inc.  
P.O. Box 17010, Fort Smith, AR 72917

*"In keeping with its policy of continuous progress and product improvement, Rheem reserves the right to make changes without notice."*