



The new degree of comfort.™

SUBMITTAL COVER SHEET

PROJECT NAME _____

LOCATION _____

ARCHITECT _____

ENGINEER _____

CONTRACTOR _____

SUBMITTED BY _____ DATE _____

UNIT SUMMARY

Quantity						
Unit Designation						
Model No.						
Total Cooling						
Sensible Cooling						
Air Ent. Evaporator						
Air Lvg. Evaporator						
Heating Input						
Heating Output						
CFM/ESP						
EER/SEER						
Electrical						
Minimum Ampacity						
Min.-Max. Breaker						
Net Unit Weight						
Accessory						
Catalog Form Number						

ACCESSORIES:

NOTES:



INTEGRATED HOME COMFORT

SUBMITTAL SHEET FOR RGRL- 95% A.F.U.E. OR ABOVE TWO-STAGE UPFLOW GAS FURNACES

**Models with Input Rates of 45,000, 60,000, 75,000, 90,000
& 105,000 BTU/HR [13.19, 17.58, 22, 26.38 & 30.77 kW]**

JOB NAME _____ MODEL NO. _____
 CONTRACTOR _____ OUTDOOR UNIT MODEL NO. _____
 ENGINEER _____ LOCATION _____
 SUBMITTED FOR APPROVAL RECORD ORDER NO. _____
 DATE _____

UNIT DATA

HEATING PERFORMANCE

TOTAL CAPACITY INPUT* _____ MBH [kW]
 TOTAL CAPACITY OUTPUT* .. _____ MBH [kW]
 DESIGN TEMP. RISE _____ °F [°C] DB
 AFUE _____ %
 CALIFORNIA SEASONAL EFFICIENCY _____ %
 (*uses blower motor heat)

SUPPLY AIR BLOWER PERFORMANCE

TOTAL AIR SUPPLY _____ CFM [L/s]
 TOTAL RESISTANCE EXTERNAL TO UNIT _____ IWG
 BLOWER SPEED _____ RPM
 POWER OUTPUT REQUIREMENT .. _____ BHP
 MOTOR RATING _____ HP [W]
 POWER INPUT REQUIREMENT _____ kW

ELECTRICAL DATA

POWER SUPPLY _____ Hz
 TOTAL UNIT AMPACITY _____ AMPS
 MINIMUM WIRE SIZE _____ AWG
 MAXIMUM OVERCURRENT DEVICE FUSES/HACR BREAKER _____ AMPS

FEATURES FOR RGRL

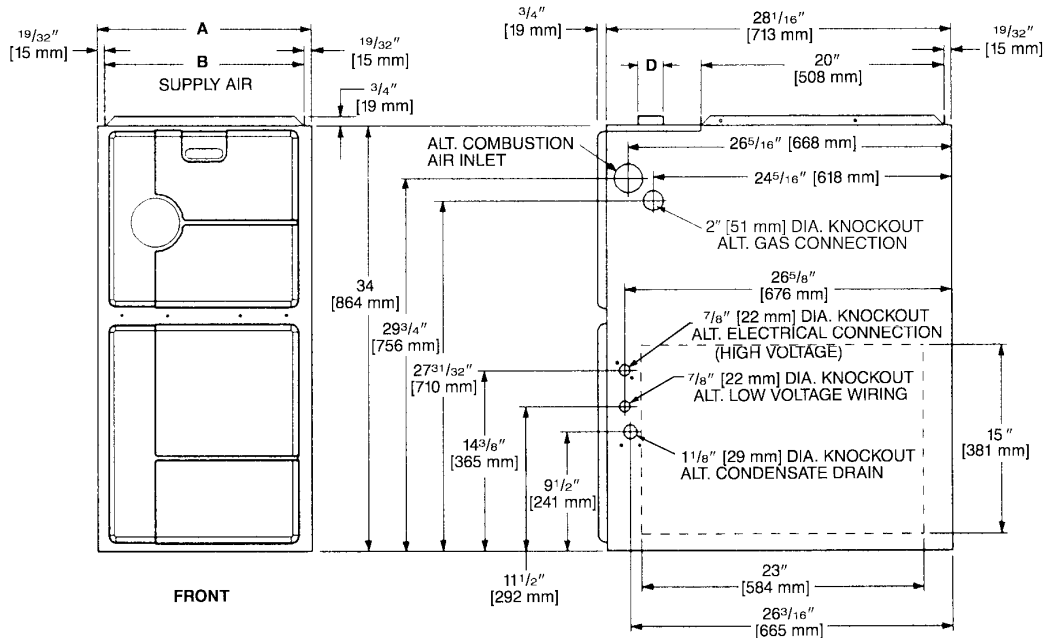
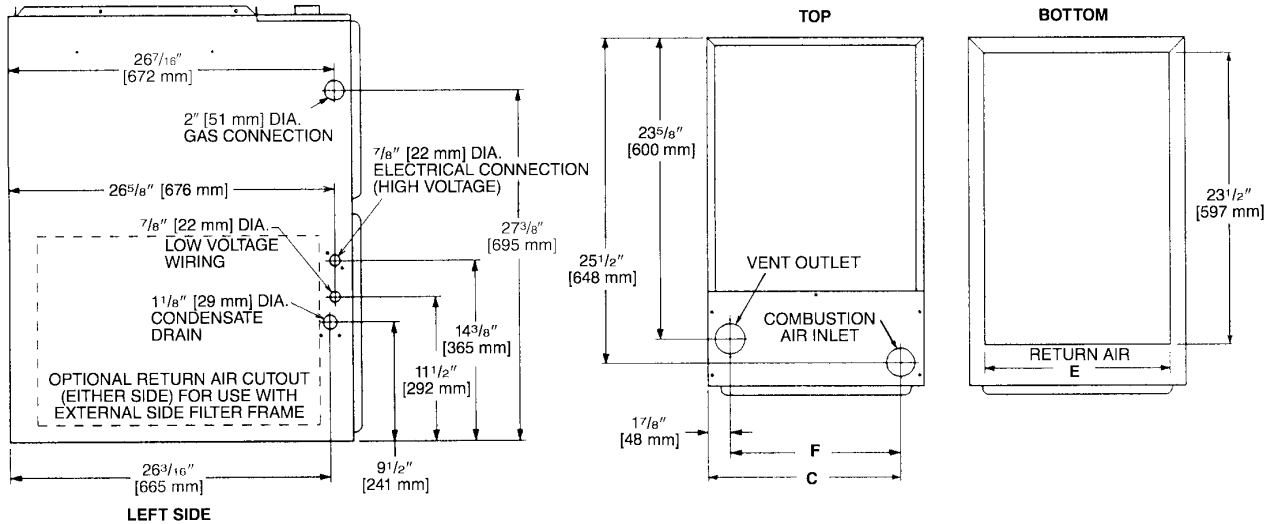
- Two stages of operation to save energy and maintain optimal comfort level.
- Furnace operates at 70% capacity for low-heat and 100% capacity for high-heat.
- Compatible with single or two-stage thermostat. (For optimal performance a two-stage thermostat is recommended.)
- Heat exchanger is constructed of all aluminized steel for maximum corrosion resistance and thermal fatigue reliability.
- Low profile "34 inch" design is lighter and easier to handle and leaves room for optional accessories.
- Left or right side gas, electric, and condensate drainage connections.
- Integrated control board manages all operational functions and provides hookups for humidifier and electronic air cleaner.
- An insulated blower compartment, a slow-opening gas valve and a specially designed inducer system make it one of the quietest furnaces on the market today.
- Features a Limited Lifetime Warranty on the primary and secondary heat exchanger and a 10-Year Limited Warranty on all other parts.
- Molded permanent filters.
- Optional indoor or outdoor combustion air. In addition, combustion air may be piped to either the top or side of the cabinet on all upflow models. A special molded fitting is provided to ease installation.
- Dual certified for sealed combustion (2-pipe) or non-direct (1-pipe) applications.
- Solid bottom is standard.
- Control board diagnostics.

FIELD INSTALLED ACCESSORIES

- Plenum Adapter (RXAA-)
- Vent Termination Kits Concentric:
 RXGY-E03A Vertical/Horizontal: RXGY-E03A
 RXGY-D02 OR 2A RXGY-003 OR 3A
 Horizontal Two Pipe: RXGY-D02, RXGY-D03
- Condensate Pump Kit: RXGY-B01
 Neutralizer Kit: RXGY-A01
- Fossil Fuel Kit: RXPF-F01 and F02
 Return Air Plenum (RXGR-C17B, 21B, 24B)
 External Bottom Filter Rack: RXGF-CB
 External Side Filter Rack: RXGF-CA
 High Altitude Kit: (RXGY-F18, F19, F20).....



UPFLOW MODELS



MODEL RGR-L-	A	B	C	D	E	F	LEFT SIDE	MINIMUM CLEARANCE (IN.) [mm]					SHIP WGTS. [kg]
								RIGHT SIDE	BACK	TOP	FRONT	VENT	
04*MAES	17 ¹ / ₂ [445]	16 ¹¹ / ₃₂ [415]	15 ⁵ / ₈ [397]	2 [51]	15 [422]	13 ²⁵ / ₃₂ [352]	0	0	0	1 [25]	2 [51]	0	111 [50]
06*MAES	17 ¹ / ₂ [445]	16 ¹¹ / ₃₂ [415]	15 ⁵ / ₈ [397]	2 [51]	15 [422]	13 ²⁵ / ₃₂ [352]	0	0	0	1 [25]	2 [51]	0	117 [53]
07*YBGS	21 [533]	19 ²⁷ / ₃₂ [504]	19 ¹ / ₈ [487]	2 [51]	18 ¹ / ₂ [511]	17 ⁹ / ₃₂ [441]	0	0	0	1 [25]	2 [51]	0	145 [66]
07*MAES	17 ¹ / ₂ [445]	16 ¹¹ / ₃₂ [415]	15 ⁵ / ₈ [397]	2 [51]	15 [422]	13 ²⁵ / ₃₂ [352]	0	0	0	1 [25]	2 [51]	0	123 [56]
09*ZAJ5	21 [533]	19 ²⁷ / ₃₂ [504]	19 ¹ / ₈ [487]	2 [51]	18 ¹ / ₂ [511]	17 ⁹ / ₃₂ [441]	0	0	0	1 [25]	2 [51]	0	148 [67]
10*ZAJ5	21 [533]	19 ²⁷ / ₃₂ [504]	19 ¹ / ₈ [487]	2 [51]	18 ¹ / ₂ [511]	17 ⁹ / ₃₂ [441]	0	0	0	1 [25]	2 [51]	0	152 [69]

*E=Standard
*N=NO_x Models

[] Designates Metric Conversions

Before proceeding with installation, refer to installation instructions packaged with each model, as well as complying with all Federal, State, Provincial, and Local codes, regulations, and practices.

Rheem Sales Company, Inc.
P.O. Box 17010, Fort Smith, AR 72917

"In keeping with its policy of continuous progress and product improvement, Rheem reserves the right to make changes without notice."