

# SUBMITTAL SHEET FOR RGRS/RGRT 90% A.F.U.E. OR ABOVE UPFLOW GAS FURNACES

**Models with Input Rates from 45,000 to 120,000 BTU/HR  
[13.19 to 35.17 kW]**

JOB NAME \_\_\_\_\_ MODEL NO. \_\_\_\_\_  
 CONTRACTOR \_\_\_\_\_ OUTDOOR UNIT MODEL NO. \_\_\_\_\_  
 ENGINEER \_\_\_\_\_ LOCATION \_\_\_\_\_  
 SUBMITTED FOR  APPROVAL  RECORD ORDER NO. \_\_\_\_\_  
 DATE \_\_\_\_\_

## UNIT DATA

### HEATING PERFORMANCE

TOTAL CAPACITY INPUT\* ..... MBH [kW]  
 TOTAL CAPACITY OUTPUT\* ..... MBH [kW]  
 DESIGN TEMP. RISE ..... °F [°C] DB  
 AFUE ..... %  
 CALIFORNIA SEASONAL  
 EFFICIENCY ..... %  
 (\*uses blower motor heat)

### SUPPLY AIR BLOWER PERFORMANCE

TOTAL AIR SUPPLY ..... CFM [L/s]  
 TOTAL RESISTANCE EXTERNAL  
 TO UNIT ..... IWG  
 BLOWER SPEED ..... RPM  
 POWER OUTPUT REQUIREMENT .. BHP  
 MOTOR RATING ..... HP [W]  
 POWER INPUT REQUIREMENT ..... kW

### ELECTRICAL DATA

POWER SUPPLY ..... Hz  
 TOTAL UNIT AMPACITY ..... AMPS  
 MINIMUM WIRE SIZE ..... AWG  
 MAXIMUM OVERCURRENT DEVICE  
 FUSES/HACR BREAKER ..... AMPS

## FEATURES FOR RGRS/RGRT

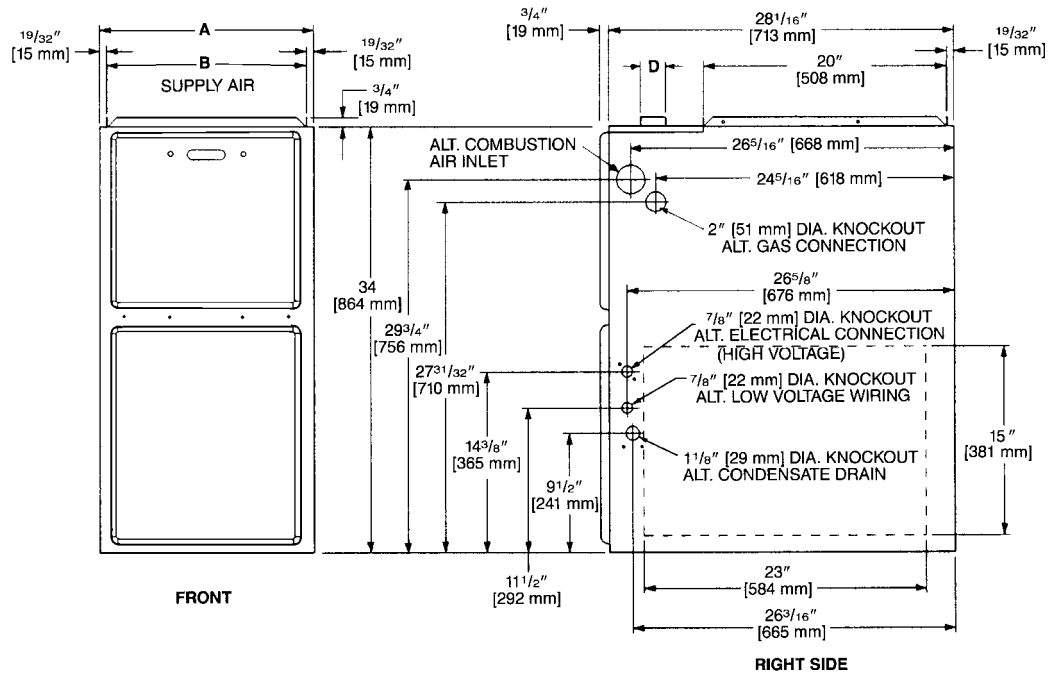
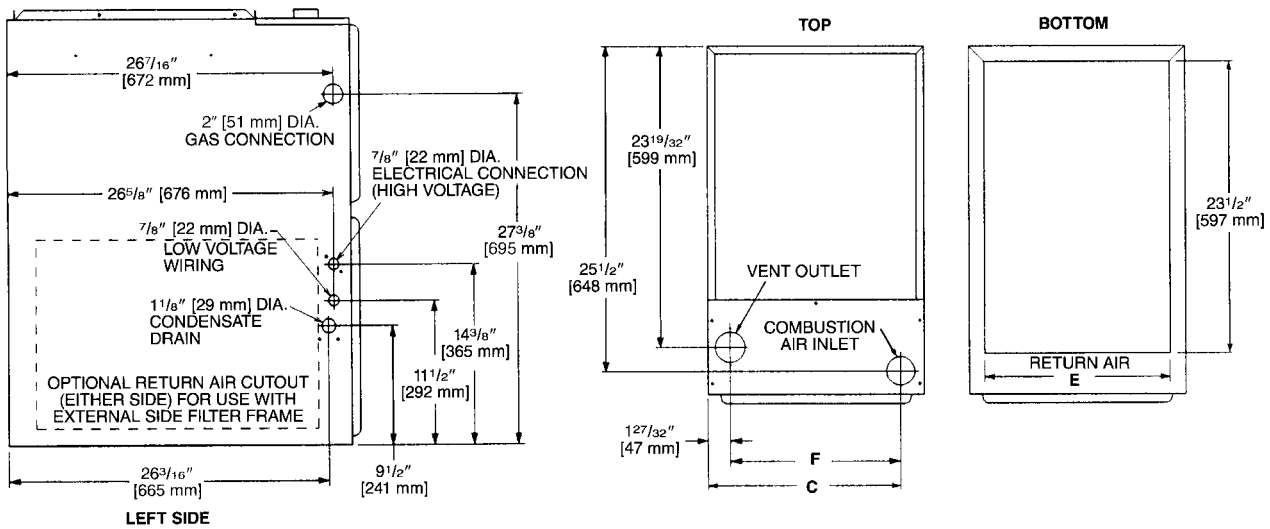
- Low profile "34 inch" design is lighter and easier to handle and leaves room for optional accessories.
- Left or right side gas, electric, and condensate drainage connections on upflow models.
- Integrated control board manages all operational functions and provides accessory hookups for an electronic air cleaner.
- A slow-opening gas valve and a specially designed inducer system make it one of the quietest furnaces on the market today.
- Pre-painted galvanized steel cabinet.
- Optional indoor or outdoor combustion air. In addition, combustion air may be piped to either the top or right side of the cabinet on all upflow models. A special molded fitting is provided to ease installation.
- Control board diagnostics.

## FIELD INSTALLED ACCESSORIES

- Plenum Adapter (RXAA-) .....
- Vent Termination Kits Concentric:  
 Vertical/Horizontal: RXGY-E03 .....   
 Horizontal Two Pipe: RXGY-D02/RXGY-D03/RXGY-D04 .....   
 Neutralizer Kit: RXGY-A01 .....
- Fossil Fuel Kit: RXPF-F01 and F02 .....
- Return Air Plenum (RXGR-C17B, 21B, 24B) .....
- External Bottom Filter Rack: RXGF-CB .....
- External Side Filter Rack: RXGF-CA .....
- Internal Filter Rack for Bottom or Side Return: RXGF-DA .....
- High Altitude Kit: (RXGY-F04, 05, 06, 07) .....
- Twining Kit: (RXGP-F03) (For -GRJ only) .....



# UPFLOW MODELS



TONS	MODEL RGRS-	MODEL RGRT-	A	B	C	D	E	F	LEFT SIDE	MINIMUM CLEARANCE (IN.) [mm]					SHIP WGTs. [kg]
										RIGHT SIDE	BACK	TOP	FRONT	VENT	
2	04		17 1/2 [445]	16 11/32 [415]	15 5/8 [397]	2 [51]	15 [422]	13 25/32 [352]	0	0	0	1 [25]	2 [51]	0	111 [50]
2 1/2	06		17 1/2 [445]	16 11/32 [415]	15 5/8 [397]	2 [51]	15 [422]	13 25/32 [352]	0	0	0	1 [25]	2 [51]	0	117 [53]
3		07EE	17 1/2 [445]	16 11/32 [415]	15 5/8 [397]	2 [51]	15 [422]	13 25/32 [352]	0	0	0	1 [25]	2 [51]	0	123 [56]
4		07EF	21 [533]	19 27/32 [504]	19 1/8 [487]	2 [51]	18 1/2 [511]	17 9/32 [441]	0	0	0	1 [25]	2 [51]	0	123 [56]
4 & 5	09		21 [533]	19 27/32 [504]	19 1/8 [487]	2 [51]	18 1/2 [511]	17 9/32 [441]	0	0	0	1 [25]	2 [51]	0	148 [67]
4 1/2	10		21 [533]	19 27/32 [504]	19 1/8 [487]	2 [51]	18 1/2 [511]	17 9/32 [441]	0	0	0	1 [25]	2 [51]	0	152 [69]
5	12		24 1/2 [622]	23 11/32 [593]	22 5/8 [575]	2 [51]	22 [600]	20 25/32 [530]	0	0	0	1 [25]	2 [51]	0	160 [73]

[ ] Designates Metric Conversions

**Before proceeding with installation, refer to installation instructions packaged with each model, as well as complying with all Federal, State, Provincial, and Local codes, regulations, and practices.**

*"In keeping with its policy of continuous progress and product improvement, Manufacturer reserves the right to make changes without notice."*