



SUBMITTAL COVER SHEET

PROJECT NAME _____

LOCATION _____

ARCHITECT _____

ENGINEER _____

CONTRACTOR _____

SUBMITTED BY _____ DATE _____

UNIT SUMMARY

Quantity						
Unit Designation						
Model No.						
Total Cooling						
Sensible Cooling						
Air Ent. Evaporator						
Air Lvg. Evaporator						
Heating Input						
Heating Output						
CFM/ESP						
EER/SEER						
Electrical						
Minimum Ampacity						
Min.-Max. Breaker						
Net Unit Weight						
Accessory						
Catalog Form Number						

ACCESSORIES:

NOTES:

PACKAGE GAS ELECTRIC UNITS:

RKNL-C

With Direct Digital Control

Nominal Sizes 6-12.5 Tons [21.1-44.0 kW]

RKNL-H

With Direct Digital Control

With VFD Technology

Nominal Sizes 7.5-12.5 Tons [26.4-44.0 kW]

JOB NAME _____

CONTRACTOR _____

ENGINEER _____

LOCATION _____

ORDER NO. _____

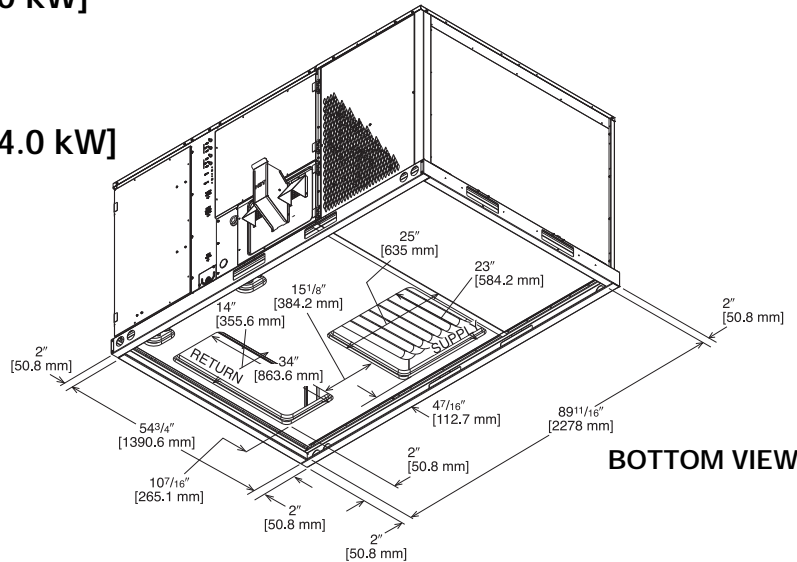
SUBMITTED FOR APPROVAL RECORD

SUBMITTED BY _____

DATE _____

UNIT DESIGNATION _____

MODEL NO. _____



UNIT DATA

COOLING PERFORMANCE

TOTAL CAPACITY* MBH
 SENSIBLE CAPACITY* MBH
 EFFICIENCY (at AHRI) EER
 PART LOAD EFFICIENCY EER
 AMBIENT DB TEMP °F
 ENTERING DB TEMP °F
 ENTERING WB TEMP °F
 LEAVING DB TEMP °F
 LEAVING WB TEMP °F
 TOTAL POWER INPUT kW
 ELEVATION FT
 SOUND POWER DBELS

HEATING PERFORMANCE

GAS HEAT INPUT BTU
 GAS HEAT OUTPUT BTU
 STEADY STATE EFFICIENCY MBH

SUPPLY AIR BLOWER PERFORMANCE

SUPPLY AIR CFM [L/s]
 OUTSIDE AIR CFM [L/s]
 EXTERNAL STATIC PRESSURE IWG
 DUCT CONNECTION LOCATION
 BLOWER SPEED RPM
 MOTOR RATING HP [W]
 BRAKE HORSEPOWER BHP
 POWER INPUT REQUIREMENT kW

ELECTRICAL DATA

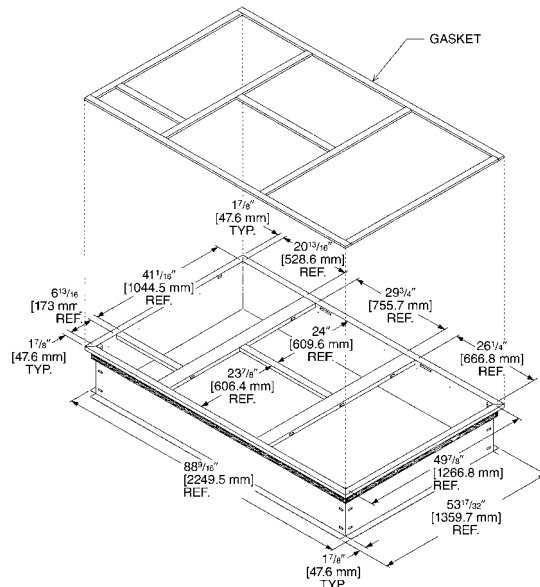
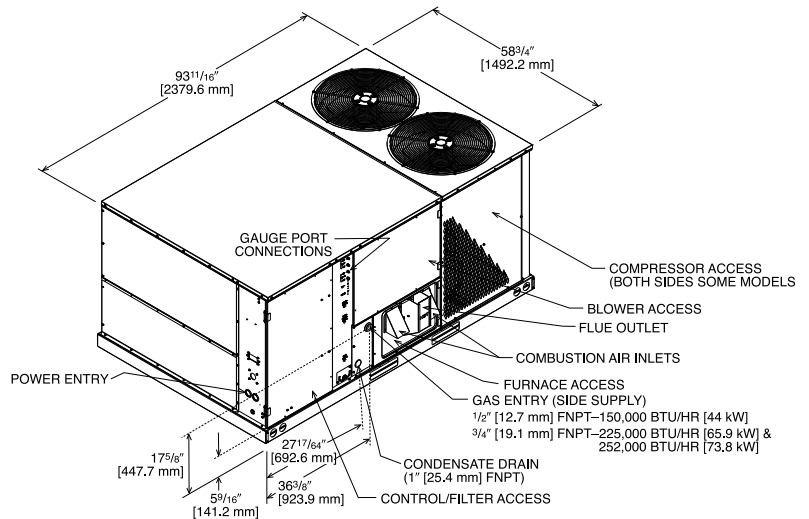
POWER SUPPLY Hz
 MINIMUM CIRCUIT AMPACITY AMPS
 MAXIMUM OVERCURRENT DEVICE
 FUSE SIZE AMPS
 HACR CIRCUIT BREAKER AMPS

DIMENSIONS & WEIGHT

HEIGHT ____ IN WIDTH ____ IN DEPTH ____ IN
 TOTAL WEIGHT LBS [kg]
 (including factory options)

CLEARANCES

FRONT 48" [1219 mm]	BACK 18" [457 mm]
BOTTOM 0"	TOP 60" [1524 mm]
LEFT SIDE 18" [457 mm]	36" [914 mm]
RIGHT SIDE (condenser end)	18" [457 mm]



[] Designates Metric Conversions

Roofcurb Includes Insulation Panels

**FEATURES FOR GAS/ELECTRIC ROOFTOP UNITS
RKNL-C/H 6 THRU 12.5 NOMINAL TONS [21.1 THRU 44.0 kW]**

Gas Heat

- Two-Stage Gas Valve (50/100%) for Superior Comfort Control at Minimum Operating Cost
- Dual Inducers allow for 81% Steady State efficiency at High and Low Stage
- Rheem Exclusive In-shot Burners
- Solid State, Direct Spark Ignition with Remote Flame Sense and on-board diagnostics

Cooling

- R410A Refrigerant
- Quiet, Efficient, Scroll Compressors
- Two-Stage Cooling for Superior Comfort Control at Minimum Operating Cost on most models
- Belt-drive Blower with optional drive to accommodate design conditions as high as 2.0 inches [.37 kPa] of external static pressure at nominal airflow
- Copper Tube/Aluminum Fin Coils

Service Features

- 1/4 turn Fasteners and Hinged Access Panels for Convenience
- Large Control Panel with numbered and color coded wiring for Easy Troubleshooting
- Front Access, Slide-Out Blower Assembly for Easy Maintenance
- Convertible Airflow for Maximum Flexibility
- Solid-state Furnace Controls with Diagnostic LED for Easy Troubleshooting
- Solid-state microprocessor-based control board provides flexible control and extensive diagnostics for all unit functions
- Features a 16 x 2 character LCD display and a five-button keypad for local configuration and direct diagnosis of the system
- Slide out Condensate Drain pan to simplify Cleaning
- Factory-Installed two-inch [50.8 mm], throw away filters accessible without tools

- Plug-in Electrical Connections on outdoor fan assemblies
- Unit is prewired to accept Slip-In Economizer
- Externally-mounted refrigerant gauge ports
- Side or Base utility access minimizing roof penetrations
- Full perimeter, forkable, riggable baserails with protective forkboards for easy handling
- Complete Factory Tested, Charged, Wired
- Compatible with a third party building management system that supports the BACnet Application Specific Controller device profile
- Compatible with a third party building management system that supports the LonMark Space Comfort Controller (SCC) functional profile or LonMark Discharge Air Controller (DAC) functional profile

Reliability Features

- One-piece Top and Base pan on indoor section, One-inch [25.4 mm] raised flanges on supply/return opening for superior water management
- Aluminized Steel Heat Exchanger helps eliminate corrosion
- Base pan Insulation mounted on bottom helps eliminate corrosion and improves indoor air quality
- Non-Corrosive, sloped drain pan helps improve indoor air quality
- Insulation secured by adhesive and mechanical means
- Electrodeposition power-coat paint process guards against extreme weather conditions and withstands 1000-hour salt-spray test
- High and Low Refrigerant Pressure Switches
- Solid core refrigerant liquid line filters
- Available Comfort Alert® Module for power phase monitoring protection
- Models with VFD (Variable Frequency Drive) meets ASHRAE 90.1-2010 and California Title 24.

ACCESSORIES

Factory Installed

- Oversized Blower motor
- Outdoor Coil Guard
- Stainless Steel Gas Heat Exchanger
- Disconnect w/Non-Powered Convenience Outlet
- Low Ambient w/Comfort Alert® Control
- Single Enthalpy Economizer w/Barometric Relief and DDC
- Single Enthalpy Economizer w/Barometric Relief, Smoke Detector and DDC

[] Designates Metric Conversions

Field Installed

- Outdoor Coil Guard
- Disconnect w/Non-Powered Convenience Outlet
- Low Ambient Control
- Comfort Alert® Control
- Natural Gas High Altitude Kit
- Propane Conversion Kit
- 14" Full Perimeter Roofcurb
- 24" Full Perimeter Roofcurb
- Roofcurb Adapter
- Concentric Diffuser
- Manual Outside Air Intake Damper
- Motorized Outside Air Intake Damper
- Motorized Outside Air Intake Damper w/DDC Feedback
- Single Enthalpy Economizer w/Barometric Relief and DDC
- Single Enthalpy Economizer w/Barometric Relief, Smoke Detector and DDC
- Horizontal Single Enthalpy Economizer w/Barometric Relief and DDC
- Dual Enthalpy Adapter
- Power Exhaust
- CO₂ Sensor (wall mount with LCD)

Before proceeding with installation, refer to installation instructions packaged with each model, as well as complying with all Federal, State, Provincial, and Local codes, regulations, and practices.

www.MainlineCollection.com

"In keeping with its policy of continuous progress and product improvement, the right is reserved to make changes without notice."