



## Medium Duty Gas

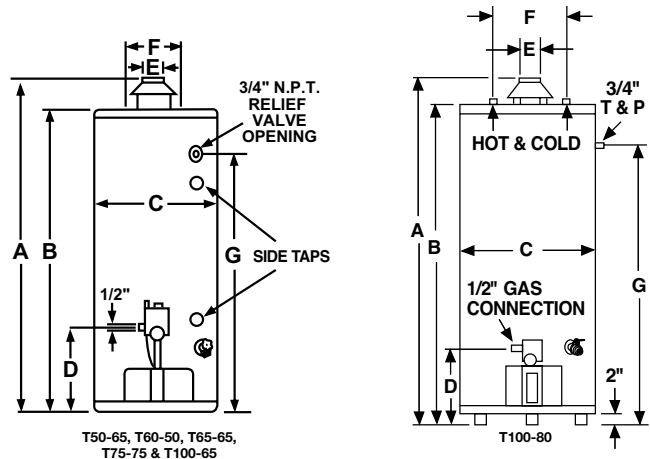
45,000-80,000 Btu/h

### Standard Features

- Small jacket diameters
- Short floor-to-vent heights
- Rigid foam insulation
- Heavy duty anode rod
- Factory installed CSA/ASME rated T&P relief valve
- Full port, full flow brass drain valve
- Gas control system
- Certified for a 150 PSI maximum working pressure
- Low NOx models available
- T60-50N meets S. Cal. and Texas requirements
- Order T100-80N for Low NOx
- 3-Year limited tank warranty



With Optional Kit



Side taps on 48, 63, 75 & 98 gallon models only  
 T50-65, T60-50 & T65-65 water connections are 3/4" NPT  
 T75-75 & F100-65LP water connections are 1" NPT  
 T100-80 water connections are 1" NPT

RECOVERY CAPACITIES Recovery in U.S. Gallons/Hr. (GPH) at Various Temperature Rises.												
MODEL NUMBER	INPUT (BTU/H)	40°F	50°F	60°F	70°F	80°F	90°F	100°F	110°F	120°F	130°F	
T60-50N†*	50,000	115	92	77	66	58	51	46	42	38	35	
T60-50LP*	45,000	104	83	69	59	52	46	41	38	35	32	
T50-65N†*	65,000	150	120	100	86	75	67	60	54	50	46	
T50-65LP*	48,000	111	88	74	63	55	49	44	40	37	34	
T65-65N	65,000	150	120	100	86	75	67	60	54	50	46	
T65-65LP	50,000	115	92	77	66	58	51	46	42	38	35	
T75-75N-2†*	75,100	182	146	121	104	91	91	73	66	61	56	
T75-75LP*	65,000	150	120	100	86	75	67	60	54	50	46	
T100-80	80,000	194	155	129	111	97	86	78	71	65	60	
T100-80N†	76,000	184	147	123	105	92	82	74	67	61	57	
T100-65LP*	65,000	150	120	100	86	75	67	60	54	50	46	

Recovery rating is based on recovery efficiencies obtained in a CSA certified laboratory.

DIMENSIONAL INFORMATION												
MODEL NUMBER	UNITS	A	B	C	D	E	F	G	CLEARANCE TO COMBUSTIBLES			APPROX. SHIPPING WEIGHT
									SIDE	FRONT	TOP	
T60-50	inches	62	58	23	13-1/4	4	8	48-1/2	1	3	2	180 lbs
T50-65	inches	62-1/2	58-1/2	21-3/4	14	4	11	51-3/4	0	3	12	180 lbs
T65-65	inches	65	61-1/4	23	14	4	11	54-3/4	0	3	12	225 lbs.
T75-75	inches	64	60	26-1/4	13-1/4	4	11	53-1/4	1	3	2	320 lbs.
T100-80	inches	69-5/8	65-3/4	28-1/4	11	4	15	57-13/16	1	Alcove	12	410 lbs.
T100-65	inches	67-3/4	64	27-1/4	14-3/8	4	11	57-3/16	1	3	12	350 lbs.

† Meets 40 ng/J NOx requirements. \*FVIR Compliant