



SUBMITTAL COVER SHEET

PROJECT NAME _____						
LOCATION _____						
ARCHITECT _____						
ENGINEER _____						
CONTRACTOR _____						
SUBMITTED BY _____ DATE _____						
UNIT SUMMARY						
Quantity						
Unit Designation						
Model No.						
Total Cooling						
Sensible Cooling						
Air Ent. Evaporator						
Air Lvg. Evaporator						
Heating Input						
Heating Output						
CFM/ESP						
EER/SEER						
Electrical						
Minimum Ampacity						
Min.-Max. Breaker						
Net Unit Weight						
Accessory						
Catalog Form Number						
ACCESSORIES:				NOTES:		

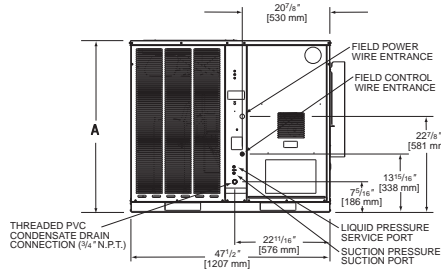
SUBMITTAL SHEET FOR PACKAGE GAS ELECTRIC

RGEA14, RGEA15

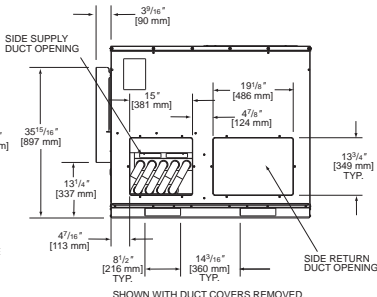
Nominal Sizes 2-5 Tons [7.0-17.6 kW]

JOB NAME _____
 CONTRACTOR _____
 ENGINEER _____
 LOCATION _____
 ORDER NO. _____
 SUBMITTED FOR ☐ APPROVAL ☐ RECORD
 SUBMITTED BY _____
 DATE _____
 UNIT DESIGNATION _____
 MODEL NO. _____

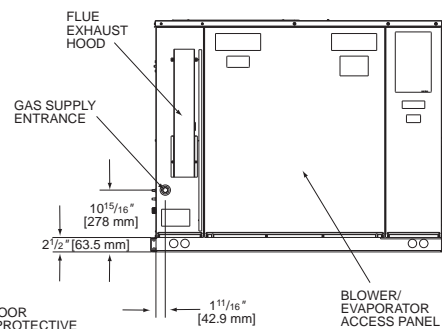
FRONT VIEW



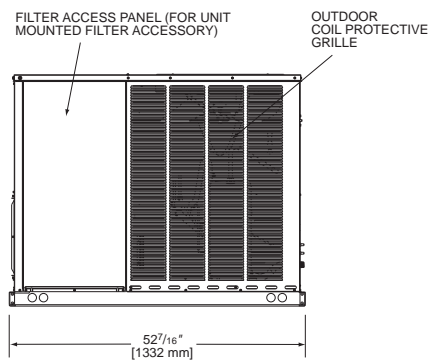
BACK VIEW



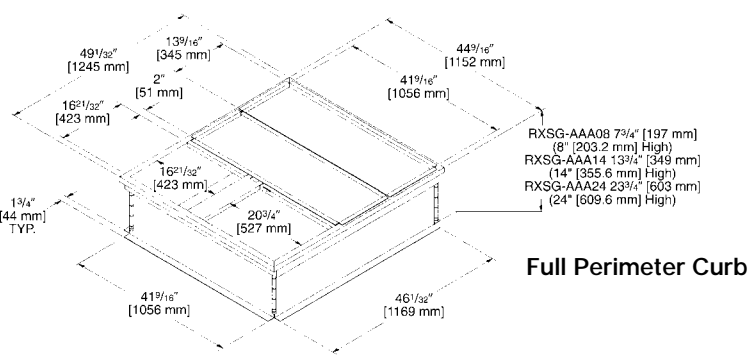
SIDE VIEW



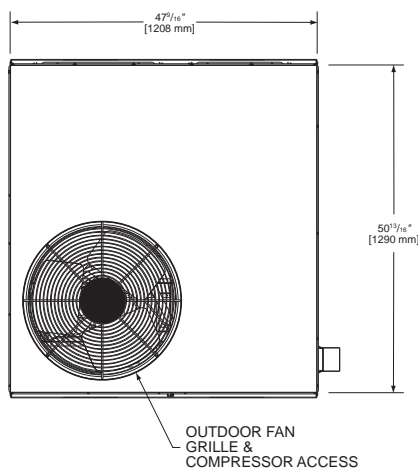
SIDE VIEW



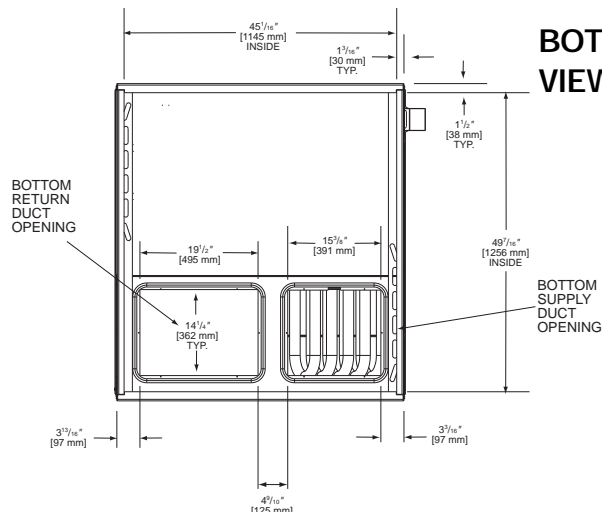
UNIT DATA	
COOLING PERFORMANCE	
TOTAL CAPACITY*	_____ MBH
SENSIBLE CAPACITY*	_____ MBH
OUTDOOR DESIGN TEMP.	_____ °F [°C] DB/WB
TOTAL SUPPLY AIR	_____ CFM [L/s]
TEMP. OF AIR ENTERING	
EVAPORATOR COIL	_____ °F [°C] DB/WB
POWER INPUT REQUIREMENT	_____ kW
SEER/EER RATING	_____
(*uses blower motor heat)	
HEATING PERFORMANCE	
GAS HEAT INPUT CAPACITY	_____ MBH
GAS HEAT OUTPUT CAPACITY	_____ MBH
STEADY STATE EFFICIENCY	_____
SUPPLY AIR BLOWER PERFORMANCE	
TOTAL SUPPLY AIR	_____ CFM [L/s]
TOTAL RESISTANCE EXTERNAL TO UNIT	_____ IWG
BLOWER SPEED	_____ RPM
POWER OUTPUT REQUIREMENT	_____ BHP
MOTOR RATING	_____ HP [W]
POWER INPUT REQUIREMENT	_____ kW
ELECTRICAL DATA	
POWER SUPPLY	_____ Hz
TOTAL UNIT AMPACITY	_____ AMPS
MINIMUM WIRE SIZE	_____ AWG
MAXIMUM OVERCURRENT DEVICE FUSES HACR BREAKER	_____ AMPS
TOTAL UNIT WEIGHT	
TOTAL OPERATING WEIGHT	_____ LBS [kg]
(including field-installed accessories)	
CLEARANCES	
FRONT	48" [1219 mm]
CONDENSER COIL	18" [457 mm]
DUCT SIDE	12" [305 mm]
EVAPORATOR END	36" [914 mm]
ABOVE UNIT	60" [1524 mm]



[] Designates Metric Conversions



TOP VIEW



BOTTOM VIEW

[] Designates Metric Conversions

FEATURES

- Features a Scroll® compressor for maximum efficiency and quiet operation. .
- Louvered condenser compartment for protecting the coil against yard hazards and/or weather extremes.
- One-piece top with a deep flange to help keep water out of the unit.
- Supply and return air openings feature a one-inch tall flange to prevent water migration into the ductwork.
- Access panels have "weep holes" and channels to further help manage water run-off.
- Side and down discharge options available on all models. All models are shipped ready for horizontal application.
- Easily accessible blower section complete with slide-out blower. The RGEA14 comes standard with variable speed motor with adjustable airflow in heating and cooling. The variable speed motor also comes with a interface that allows for dehumidification when used in continuous humidistat. The variable speed system is capable of 1 inch external static.
- Refrigerant connections are conveniently located for easy service diagnostics.
- Condenser and evaporator coils feature enhanced fins for better heat transfer and rifled copper tubing for greater efficiency.
- Inside the easily accessible furnace compartment is the draft inducer motor. This motor is specially designed for quiet reliable operation. In addition to the draft inducer motor, the in-shot gas burners and manifold efficiently regulate the flow of gas for combustion. These new gas/electric units also feature direct-spark ignition and remote flame sensors for added reliability and efficiency.
- All units feature an internal trap on the condensate line eliminating the need for installing an on-site external trap.
- Easily accessible control box.
- Single point wiring simplifies installation.
- Our gas/electric package units feature a tubular heat exchanger design. Tubular heat exchangers are more efficient and durable than older-style clamshell heat exchangers.
- Thermal expansion valve standard on all models for superior superheat control, reliability, and energy efficiency at all operating conditions.
- Filter drier standard on all models (not shown).
- Rugged baserail included for improved installation and handling
- Complete factory charged, wired and run tested.
- Molded compressor plugs.
- A double sloped evaporator coil drain pan assures all water is removed from the unit to improve indoor air quality.

FIELD INSTALLED ACCESSORIES

- Roof Curb (8" [203.2 mm], 14" [355.6 mm] & 24" [609.6 mm] High Full Platform).....☐
- Roof Curb (14" [355.6 mm & 24" [609.6 mm] Sloped Platform)☐
- Filter Accessory☐
- Lift Kit (For Rigging)☐
- Time Delay Relay.....☐
- Start Assist☐
- Low Ambient Control☐

- Low Pressure Control☐
- Economizer (Enthalpy Controlled) Downflow Only.....☐
- Manual Fresh Air Damper☐
- L.P. (Propane) Kit☐
- Transition (Rectangular-Round) Downflow/Sideflow☐
- Concentric Diffuser and Grille☐
- High Pressure Control☐

Before proceeding with installation, refer to installation instructions packaged with each model, as well as complying with all Federal, State, Provincial, and Local codes, regulations, and practices.

www.MainlineCollection.com

"In keeping with its policy of continuous progress and product improvement, the right is reserved to make changes without notice."