

COMMERCIAL HOT WATER SYSTEM FOR TODAY & TOMORROW

E C O N O P A K F e a t u r e s

- All Non-ferrous Waterways
- Factory-mounted and wired stainless steel pump (Piping by others)
- High Efficiency - 82% thermal efficiency
- Six models available:
90,000 to 399,000 BTU per Hour Input
- Super Fast Recovery - Consistent 140°F water delivery, even during peak demand times
- Long Service Life (Four times longer than average tank-type heaters)
- Compact - Fits in small equipment rooms
- Backed by a twenty-year limited warranty
- Federal S3874 and California AB1953
CSA certified for low-lead compliance



HOTEL / MOTEL



MULTI FAMILY



RESTAURANT



COMMERCIAL LAUNDRY

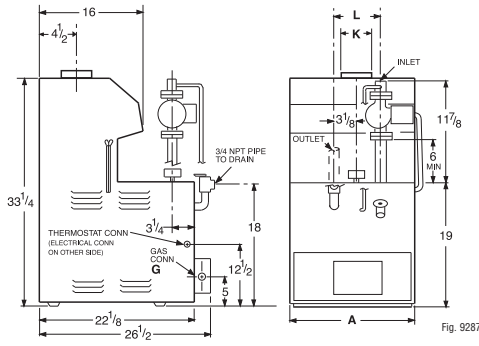


NURSING HOME



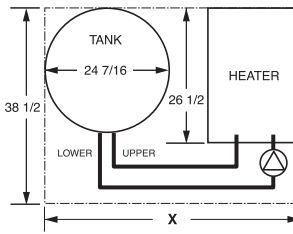
ECONOPAK® - COMMERCIAL HOT WATER SYSTEM

MODELS WH-90, WH-135, WH-195



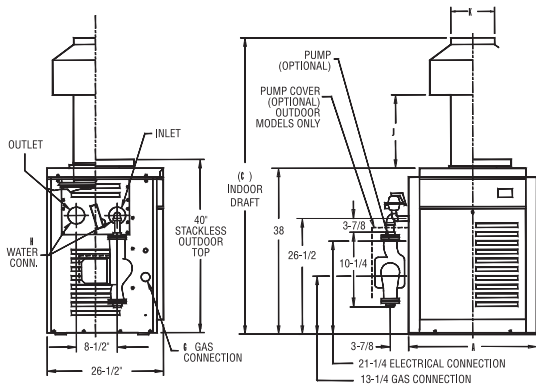
Drawing 1

All dimensions are in inches.



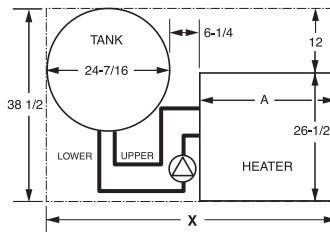
Drawing 1A-Footprint

MODELS WH-260, WH-330, WH-400



Drawing 2

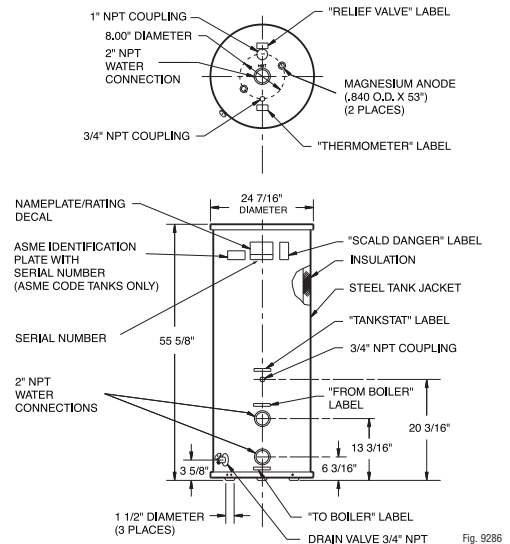
All dimensions are in inches.



Drawing 2A-Footprint

80-GALLON TANK

Tank must be ordered separately
Insulated to R12.9



TANK SIZE (GALLONS)	TYPE	SHIPPING WEIGHT (LBS)
80	CODE	255
80	NON-CODE	198

REF DWG	MODEL SIZE	INPUT (MBTUH)	IN-DOOR	OUT-DOOR	RECOVERY ΔT=100° F (GPH)**	WIDTH A	HEIGHT C	GAS CONN. G	WATER CONN. H	J	FLUE DIA. K	L	FOOT-PRINT X	SHIPPING WEIGHT (LBS)	MINIMUM CLEARANCE FROM COMBUSTIBLE MATERIALS					
															FLOOR	FRONT	RIGHT REAR LEFT SIDE RIGHT SIDE	INDOOR CONST.	OUTDOOR CONST.	VENT
1	WH-90	90	•		90	11	-	1/2	1	-	5	5 3/4	47	105	COMBUSTIBLE	SEE NOTE	6	16	N/A	6
	WH-135	135	•		132	18	-	1/2	1 1/4	-	6	6 1/4	50 1/4	135	COMBUSTIBLE	SEE NOTE	6	16	N/A	6
	WH-195	180	•		179	18	-	1/2	1 1/4	-	7	6 1/4	50 1/4	140	COMBUSTIBLE	SEE NOTE	6	16	N/A	6
2	WH-260	264	•	•	262	22 3/8	62 7/8	3/4	1 1/2	11 1/8	7	-	53	290	COMBUSTIBLE*	SEE NOTE	12	39	UNOBSTRUCTED	6
	WH-330	334	•	•	332	25 3/4	63 3/4	3/4	1 1/2	10 3/4	8	-	56 1/2	390	COMBUSTIBLE*	SEE NOTE	12	39	UNOBSTRUCTED	6
	WH-400	399	•	•	396	29 1/4	65 3/8	1	1 1/2	12 1/2	9	-	60	405	COMBUSTIBLE*	SEE NOTE	12	39	UNOBSTRUCTED	6

* Installation on combustible floor requires optional shield. ** Based on manufacturer's rating. Models available for use with either Natural Gas or Propane. A front clearance of at least 24 inches is required to service the unit in place. Ratings shown are for elevations up to 2,000 feet. Ratings should be reduced at the rate of 4% for each 1,000 feet above sea level.

RAYPAK, Inc.

2151 Eastman Avenue • Oxnard, CA 93030
805-278-5300 • Fax 800-872-9725 • www.raypak.com

