



**Pilot Assembly Kit Replacement
ULN atmospheric products**

Effective December 1, 2013 there is a new pilot assembly kit for the California Ultra Low NOx gas water heaters.

The kits numbers are:

SP20788	30 gallon
SP20789	40 gallon
SP20790	40 gal VR
SP20791	40 Short and 50 gal
SP20792	50 gal VR

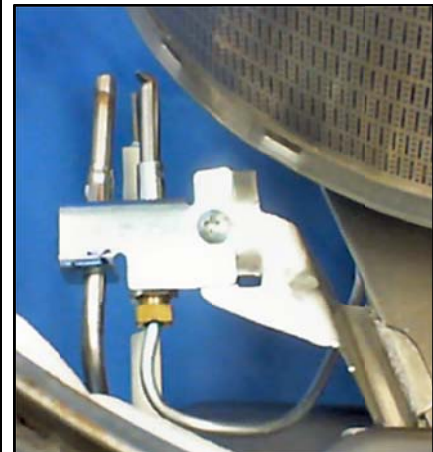
Refer to the replacement instructions included in each kit AP14531-4 (10/13). The instructions will show an inventory list of each kit and the specific "... how to...." instructions. This document will help with the actual removal and replacement of the new mounting bracket assembly and the pilot/igniter harness. These instructions will help illustrate the procedure once you get to:

13A. REMOVE PILOT MOUNTING BRACKET (If unit was produced prior to November 2013)

Remove (2) #6 screws attaching bracket to burner and replace with new bracket provided . Ensure that bracket is flush to burner assembly and located properly to burner.

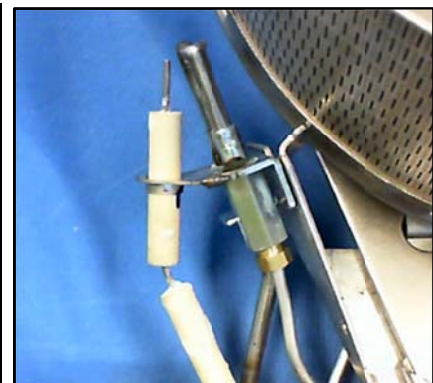
Before we get started, this is a before photo. The positioning and physical appearance of the pilot igniter looks like this on all products manufactured prior to November 2013.

Notice the thermocouple is to the 'outboard' side of the pilot hood; and the igniter is below the pilot hood.



This is the after photo. Notice the igniter is now in the outboard position; and the thermocouple is below the pilot hood.

A new mounting bracket in the replacement kit will help put the igniter assembly in its new orientation.



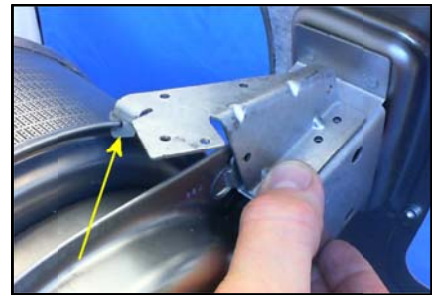


**Pilot Assembly Kit Replacement
ULN atmospheric products**

After removing the old pilot assembly, remove the old mounting bracket with a #2 Philips.



Make sure the slotted key-way is positioned on the lip of the burner and line up the two holes. Secure with a #2 Philips.



Using the new pilot assembly, thread the ends through the inner door from the inside to the outside. Seat the orange grommet in the hole and push thru until it locks in place.



Line up the mounting holes of the pilot assembly to the new mounting bracket.





Pilot Assembly Kit Replacement ULN atmospheric products

Secure with #2 Phillips screws.



Wrap the excess pilot supply tubing around the bottom of the burner pan as shown here. Secure with three clips. You may need to tap them gently into place. Make sure the clips are holding the pilot supply tube in place.



When completed, your pilot assembly should look like this. Pilot hood is on the inboard side next to the burner wall; thermocouple is positioned below the pilot hood; and the igniter is positioned to the outbound side of the pilot hood.

