



SUBMITTAL COVER SHEET

PROJECT NAME _____						
LOCATION _____						
ARCHITECT _____						
ENGINEER _____						
CONTRACTOR _____						
SUBMITTED BY _____ DATE _____						
UNIT SUMMARY						
Quantity						
Unit Designation						
Model No.						
Total Cooling						
Sensible Cooling						
Air Ent. Evaporator						
Air Lvg. Evaporator						
Heating Input						
Heating Output						
CFM/ESP						
EER/SEER						
Electrical						
Minimum Ampacity						
Min.-Max. Breaker						
Net Unit Weight						
Accessory						
Catalog Form Number						
ACCESSORIES:				NOTES:		

JOB NAME _____ DATE _____

CONTRACTOR _____ UNIT DESIGNATION _____

ENGINEER _____ MODEL NO. _____

SUBMITTED FOR ☐ APPROVAL ☐ RECORD LOCATION _____

SUBMITTED BY _____ ORDER NO. _____

SIDE "A" (WITHOUT ECONOMIZER)	2" [50.8 mm]
SIDE "B" (WITHOUT ECONOMIZER)	12" [304.8 mm]
SIDE "C" (WITHOUT ECONOMIZER)	48" [1,219.2 mm]
SIDE "D" (WITHOUT ECONOMIZER)	24" [610 mm]
ABOVE UNIT (WITHOUT ECONOMIZER)	60" [1,524 mm]

Sloped Curb

Technical drawing showing the dimensions and material specifications for a Sloped Curb. The drawing is an isometric view of a rectangular curb structure.

Dimensions:

- Top Left: $44\frac{9}{16}"$ [1132 mm]
- Top Middle: $18\frac{5}{32}"$ [461 mm]
- Top Right: $18\frac{5}{32}"$ [461 mm]
- Right Side (Top): $2"$ [51 mm]
- Right Side (Bottom): $9\frac{3}{4}"$ [248 mm]
- Bottom Right: $41\frac{9}{16}"$ [1056 mm]
- Bottom Middle: $1\frac{3}{4}"$ [44 mm] TYP
- Bottom Left: $46\frac{1}{32}"$ [1169 mm]
- Left Side (Bottom): $22\frac{1}{4}"$ [565 mm]
- Left Side (Top): $1\frac{1}{2}"$ [38 mm] (3) SIDES

Material Specifications:

- RXQG-AAA14 $13\frac{3}{4}"$ [339 mm] (14" [355.6 mm] High)
- RXQG-AAA24 $23\frac{1}{4}"$ [603 mm] (24" [609.6 mm] High)

Other Details:

- 6° REF. (Reference angle)

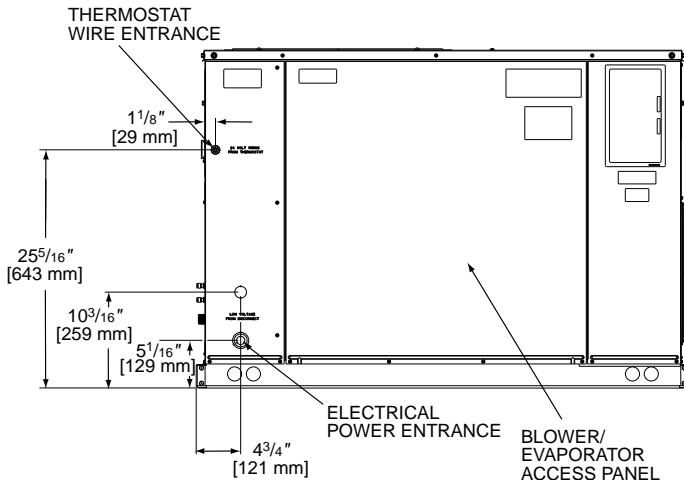
[] Designates Metric Conversions

FIELD INSTALLED ACCESSORIES

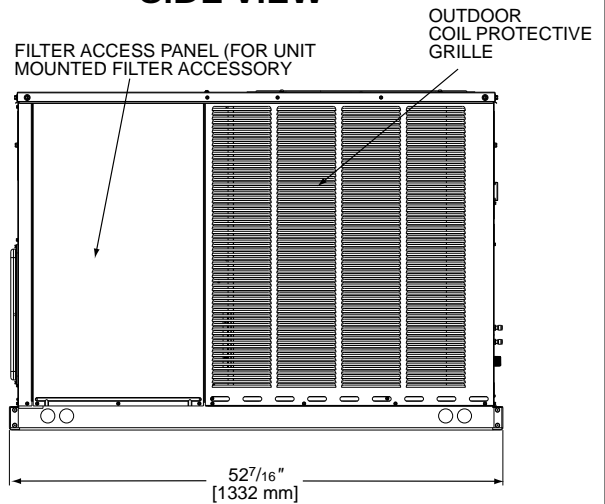
Roof Curb (14" [355.6 mm] & 24" [609.6 mm]
 Sloped Platform) ☐
 Filter Accessory ☐
 Lift Kit (For Rigging) ☐
 Time Delay Relay ☐
 Start Assist ☐
 Low Ambient Control ☐
 Low Pressure Control ☐

Economizer (Enthalpy Controlled) Downflow Only ☐
 Manual Fresh Air Damper..... ☐
 L.P. (Propane) Kit ☐
 Transition (Rectangular-Round) Downflow/Sideflow .. ☐
 Concentric Diffuser and Grille..... ☐
 High Pressure Control ☐

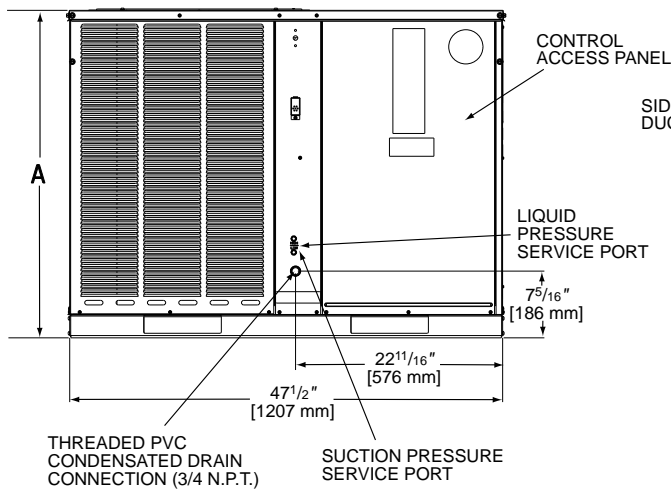
SIDE VIEW



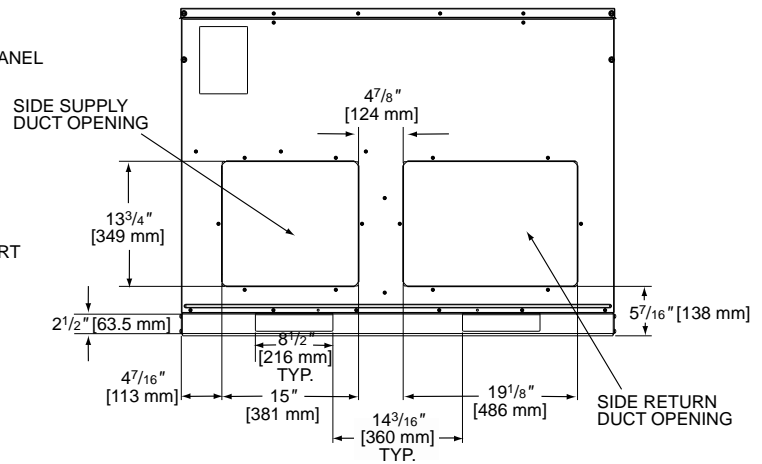
SIDE VIEW



FRONT VIEW



REAR VIEW



SHOWN WITH DUCT COVERS REMOVED.

Model Number	Height "A"
B024, B025	35 15/16
B030, B036, B042, B048	41

Before proceeding with installation, refer to installation instructions packaged with each model, as well as complying with all Federal, State, Provincial, and Local codes, regulations, and practices.