

Job: \_\_\_\_\_

Engineer: \_\_\_\_\_

Contractor: \_\_\_\_\_

Prepared By: \_\_\_\_\_ Date: \_\_\_\_\_

Model: \_\_\_\_\_ Indoor/Outdoor: \_\_\_\_\_ MBTUH Input: \_\_\_\_\_

# Delta Limited™ - Type H

## Space Heating/Hot Water Boilers Models 399B-899B

**100% Factory Fire Tested**

**Efficiency: 84%**

**Maximum Outlet Temperature: 230°F**

**Minimum Non-Condensing Inlet Temperature: 105°F**

**Thermal Shock Proof Heat Exchanger**

**Limited Twenty-Year Thermal Shock Warranty**

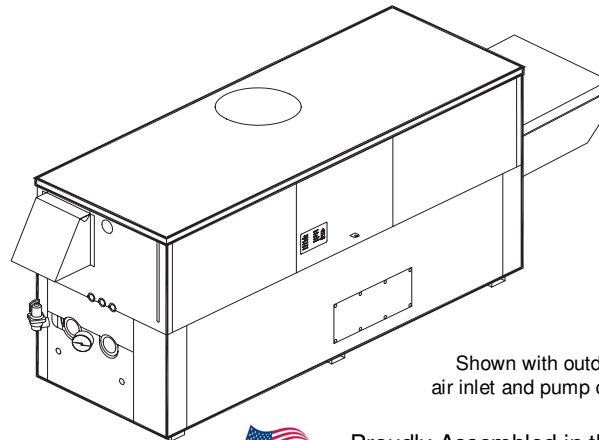
**Limited Ten-Year Closed-System Heat Exchanger  
Warranty**

**PolyTuf Powder Coated Cabinet**

**No Combustible Floor Shield Required**

**Fan-Assisted**

**Patented Burner Security Blanket**



Shown with outdoor  
air inlet and pump covers



Proudly Assembled in the USA

### Heat Exchanger

- H Stamp
- Headers
  - Glass-Lined Cast Iron – Standard
  - Bronze – Option A-1
- ASME Inspected and Stamped  
160 PSIG Working Pressure
- National Board Approved
- Fin Tubing
  - Copper – Standard
  - Cupro Nickel – Option A-3
- ASME Steel Tube Sheet
- Silicone High Temp O-Rings
- Pressure Relief Valve, ASME
  - 45 PSIG – Standard on Model 399B
  - 60 PSIG – Standard on Models  
499B-899B
  - \_\_\_\_\_ PSIG – Optional
- Temperature and Pressure Gauge
- Water Connections
  - Left – Standard
  - Right – Option A-6

### Controls

- 120V, 60Hz, 1 Phase Power Supply
- 120/24V 60Hz Transformer
- 100% Shut-Off/Lockout
- Hot Surface Ignition
- Remote Flame Sensor
- High Limit Control, Manual Reset
- On/Off Power Switch
- Manual Shut-Off, Front-Mounted Switch
- Flow Switch
- Blocked Vent Pressure Switch
- Combustion Air Proving Switch
- Pump Time Delay Relay
- Status Display Lights

### Gas Train

- Manual Gas Shut-Off Valve(s)
- Combination Valves
- Firing Mode
  - On/Off: Model 399B
  - 2-Stage: Models  
499B-899B
- Fuel
  - Natural Gas
  - Propane Gas
- Design Certified - ANSI  
Z21.13/CSA 4.9

### Burner

- Ultra-Low NOx: Less than  
20 PPM

### Construction

- Indoor/Outdoor Construction
- Enclosed Front Controls
- CSA Low Lead Certified ( $\leq$   
.25% Lead)

### Venting

- Vent Location
  - Top, Outdoor – Standard
  - Top, Indoor – Option D-20
  - Rear – Option D-14
- Vent Termination Cap
  - Outdoor D-11
  - Indoor, Horizontal D-15
  - Indoor, Vertical (by others)
- Extractor – Optional
  - By others
  - Not required

### Temperature Controls

- B-6 Aquastat, 2-Stage (100-200 °F)
- B-\_\_ TempTracker Digital Controller,  
2-Stage (Loose)
- B-\_\_ TempTracker Digital Controller,  
4-Stage (Loose)
- B-\_\_ TempTracker Mod+ Hybrid (2-16  
Boilers)
- B-60 Stage Interface

### Options

- C-6 Ignition Module, Manual Reset
- F-10 Low Water Cut-Off, Remote Probe
- I-1 High Limit Control, Auto Reset
- P-\_\_ Pump: \_\_\_\_\_ HP, 120V, 1Ø, 60Hz
  - Cast Iron       Bronze
  - Mounted         Loose
  - Front             Rear
- P-\_\_ Cold Water Start (See 2000.48)
- S-1 Low Gas Pressure Switch, Manual
- S-2 High Gas Pressure Switch,  
Manual
- X-1 SureRack™ Kit
- X-2 SureRack Add-on
- \_\_\_\_\_

### Regulatory Agency Requirements

- \_\_\_\_\_



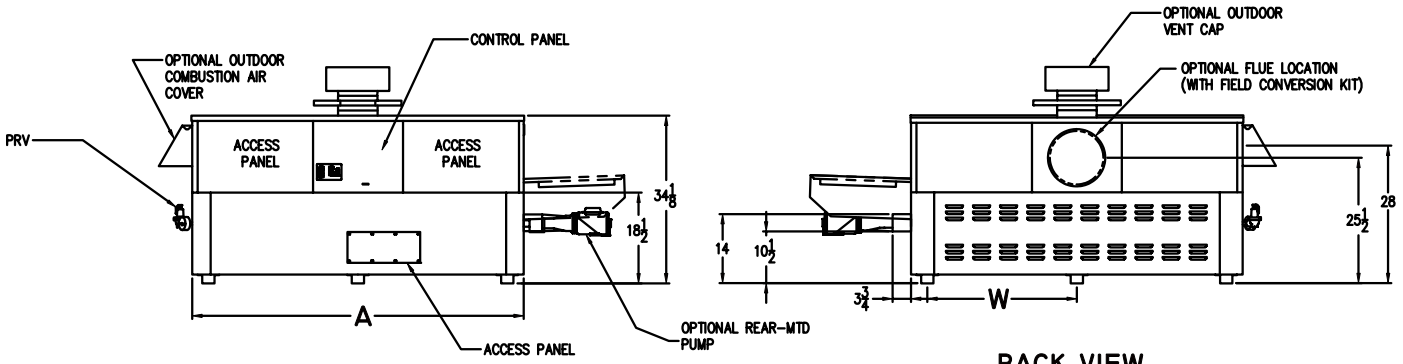
Delta Limited models not approved for use in California



A Rheem Company

# Delta Limited – Type H Models 399B-899B

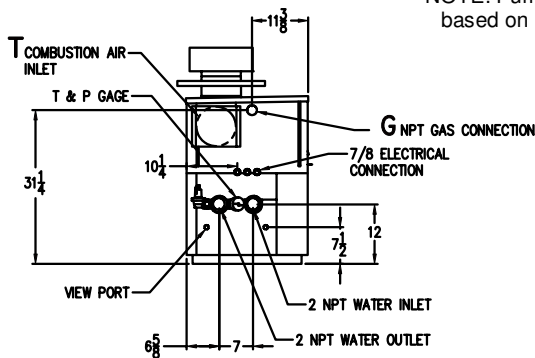
Model \_\_\_\_\_



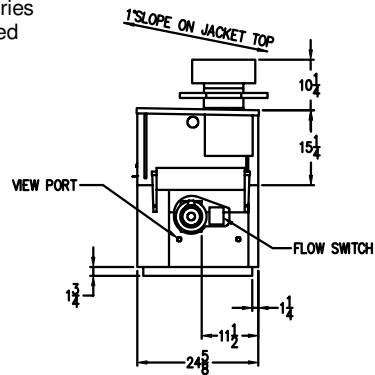
**FRONT VIEW**

**BACK VIEW**

NOTE: Pump location varies based on model selected

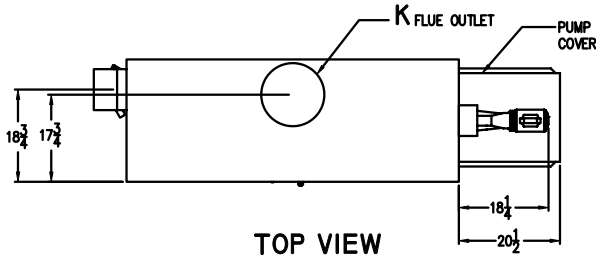


**LEFT SIDE**



**RIGHT SIDE**

**SPECIFICATIONS**



**TOP VIEW**

Model	MBTUH		A Width	G NPT	H NPT	K	T	W	Amp. Draw*	Approx. Shipping Wt. (Lbs)
	Input	Output								
399B	399	335	43	3/4	2	6	6	18-1/2	< 6	445
499B	500	420	50	1 1/4	2	6	6	22	< 6	545
649B	650	546	60 1/2	1 1/4	2	8	6	27-1/4	< 6	590
749B	750	630	67 1/2	1 1/4	2	8	6	30-3/4	< 6	675
899B	900	756	78	1 1/4	2	8	6	36	< 7	740

\* Pump not included

Dimensions are in inches.

Rates shown are for natural or propane gas, and elevations up to 4,500 feet. For installation above 4,500 feet, please contact manufacturer.

Recommended natural gas supply pressure is 7 – 10.5" WC. Recommended propane gas supply pressure is 11 - 13" WC.

**RATES OF FLOW AND PRESSURE DROPS**

Model	10°F ΔT		20°F ΔT		30°F ΔT		Min. Flow			Max. Flow		
	GPM	ΔP (ft)	GPM	ΔP (ft)	GPM	ΔP (ft)	GPM	ΔP (ft)	ΔT	GPM	ΔP (ft)	ΔT
399B	68	5.4	34	1.5	22	<1	20	<1	34	90	10.0	7
499B	85	9.2	42	2.3	28	1.1	21	<1	40	90	10.5	9
649B	N/A	N/A	55	4.0	36	1.8	28	1.1	40	90	10.7	12
749B	N/A	N/A	64	5.5	42	2.5	32	1.6	40	90	11.0	14
899B	N/A	N/A	76	8.5	51	3.8	38	2.2	40	90	11.8	16

Basis is 20 GPM or 40°F ΔT for minimum flow, 90 GPM for maximum flow.