



## Heavy Duty Electric

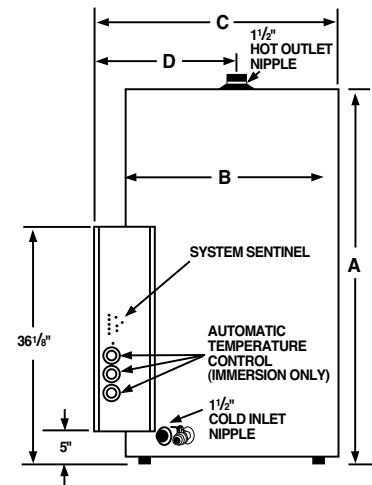
6-54 kW

### Standard Features

- System Sentinel™ L.E.D. diagnostic system
- Surface mounted and immersion thermostat models available
- Lifeguard stainless steel elements
- 208, 240, 277 and 480 voltages
- 3-Year limited tank warranty
- Manual reset high limit control
- Magnetic contactors and integral fusing
- 1-1/2" NPT inlet/outlet dielectric nipples factory installed
- 3" Rigid polyurethane foam insulation
- Heavy duty anode rods
- Full port, full flow, brass drain valve
- Factory installed CSA/ASME rated T&P relief valve
- Certified for a 150 PSI maximum working pressure (160 PSI for ASME models)
- Factory wired 3-phase
- 3-Year limited tank warranty

### Options

- UL Sanitation compliant models available
- Thermostat staging
- ASME construction available on E models



| MODEL NUMBERS               |            |             |                          |             |              |
|-----------------------------|------------|-------------|--------------------------|-------------|--------------|
| SURFACE MOUNTED THERMOSTATS |            |             | IMMERSION THERMOSTATS    |             |              |
| Tank Capacity In Gallons    |            |             | Tank Capacity In Gallons |             |              |
| 50                          | 85         | 120         | 50                       | 85          | 120          |
| TES50-6-G                   | TES85-6-G  | TES120-6-G  | TE50-6-G                 | TE85-6-G    | TE120-6-G    |
| TES50-9-G                   | TES85-9-G  | TES120-9-G  | TE50-9-G                 | TE85-9-G    | TE120-9-G    |
| TES50-12-G                  | TES85-12-G | TES120-12-G | TE50-12-G                | TE85-12-G   | TE120-12-G   |
| TES50-15-G                  | TES85-15-G | TES120-15-G | TE50-15-G                | TE85-15-G   | TE120-15-G   |
| TES50-18-G                  | TES85-18-G | TES120-18-G | TE50-18-G                | TE85-18-G   | TE120-18-G   |
| TES50-24-G                  | TES85-24-G | TES120-24-G | TE50-24-G                | TE85-24-G   | TE120-24-G   |
| TES50-27-G                  | TES85-27-G | TES120-27-G | TE50-27-G                | TE85-27-G   | TE120-27-G   |
| TES50-30-G                  | TES85-30-G | TES120-30-G | TE50-30-G                | TE85-30-G   | TE120-30-G   |
| TES50-36-G                  | TES85-36-G | TES120-36-G | TE50-36-G                | TE85-36-G   | TE120-36-G   |
| TES50-45-G                  | TES85-45-G | TES120-45-G | TE50-45-G                | TE85-45-G   | TE120-45-G   |
| TES50-54-G                  | TES85-54-G | TES120-54-G | TE50-54-G                | TE85-54-G   | TE120-54-G   |
| N/A                         | N/A        | N/A         | N/A                      | TE85A-81-GS | TE120A-81-GS |

| RECOVERY CAPACITIES |                  |                                    |     |     |      |      |      |
|---------------------|------------------|------------------------------------|-----|-----|------|------|------|
| INPUT KW            | EQUIVALENT BTU/H | TEMPERATURE RISE - DEGREES F - GPH |     |     |      |      |      |
|                     |                  | 40°                                | 60° | 80° | 100° | 120° | 140° |
| 6                   | 20,473           | 62                                 | 41  | 31  | 25   | 21   | 18   |
| 9                   | 30,709           | 92                                 | 61  | 46  | 37   | 31   | 26   |
| 12                  | 40,946           | 123                                | 82  | 61  | 49   | 41   | 35   |
| 15                  | 51,182           | 154                                | 102 | 77  | 61   | 51   | 44   |
| 18                  | 61,418           | 184                                | 123 | 92  | 74   | 61   | 53   |
| 24                  | 81,891           | 246                                | 164 | 123 | 98   | 82   | 70   |
| 27                  | 92,128           | 276                                | 184 | 138 | 111  | 92   | 79   |
| 30                  | 102,364          | 307                                | 205 | 154 | 123  | 102  | 88   |
| 36                  | 122,837          | 369                                | 246 | 184 | 147  | 123  | 105  |
| 45                  | 153,546          | 461                                | 307 | 230 | 184  | 154  | 132  |
| 54                  | 184,256          | 553                                | 369 | 276 | 221  | 184  | 158  |
| 81                  | 276,388          | 838                                | 558 | 419 | 335  | 279  | 239  |

In accordance with ANSI test procedures, these models tested below the maximum allowable standby loss levels of ASHRAE (Part of the Federally mandated Energy Policy Act (EPact)). Also exceeds energy codes of all states including California Energy Commission (CEC).

| DIMENSIONAL INFORMATION (All dimensions shown in inches) |          |        |    |        |                                |       |
|--|----------|--------|----|--------|--------------------------------|-------|
| MODEL NUMBER   | A        | B      | C  | D      | APPROX. SHIPPING WEIGHT (LBS.) |       |
|  |          |        |    |        | STD.                           | ASME* |
| TE(S)50  | 43-5/8   | 26-1/4 | 32 | 17-1/4 | 270                            | 320   |
| TE(S)85  | 57-11/16 | 28-1/4 | 34 | 18-1/4 | 350                            | 380   |
| TE(2)120   | 67-5/8   | 30-1/4 | 36 | 19-1/4 | 430                            | 460   |

| WATER TEMPERATURE RATINGS |                 |                               |                               |                        |
|---------------------------|-----------------|-------------------------------|-------------------------------|------------------------|
| Model Number              | Thermostat Type | Minimum Delivered Temperature | Maximum Delivered Temperature | High Temperature Limit |
| TES50                     | Surface         | 90°F                          | 160°F                         | 180°F                  |
| TES85, TES120             | Surface         | 120°F                         | 160°F                         | 190°F                  |
| TE50, TE85, TE120         | Immersion       | 90°F                          | 190°F                         | 200°F                  |

\*ASME construction available only on Immersion Thermostat Models.

All models are North Carolina Code compliant.