

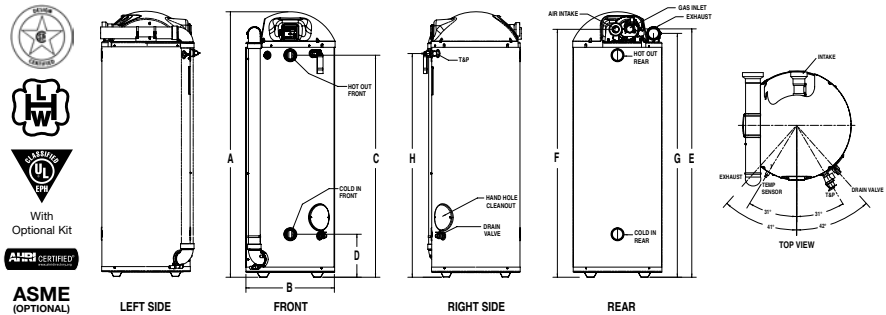


## Ultra High Efficiency 92-97% Gas Fired Water Heaters

130,000-399,900 Btu/h

### Features

- Maximum thermal efficiency of up to 97% reduces operating costs
- No chimney required; power vent or power direct vent using 2, 3 and 4 inch plastic pipe
- Ultra Low NOx emissions. Meets SCAQMD Rule 1146.2
- Meets 14 ng/j NOx compliance
- Corrosion resistant, high efficiency 3-pass heat exchanger
- Self-diagnostic LCD
- Reliable direct spark ignition
- 185° F maximum temperature setting
- Zero clearance to all combustible surfaces on sides; 6" top clearance for 130 to 300 models; 8" for 350 to 400 models
- Full-port, full-flow brass drain valve
- Front and back water connections
- Factory installed CSA/ASME rated T&P relief valve
- Altitude certification up to 8,999 feet
- 3-Year limited tank warranty



ASME (OPTIONAL)

RECOVERY CAPACITIES						DIMENSIONAL INFORMATION All dimensions shown in inches													
MODEL NUMBER	GAL. CAP.	INPUT (BTU/H) NAT. & LP	THERMAL EFFICIENCY	UNITS	TEMP. RISE – GPH			A	B	C	D	E	F	G	H	VENT	WATER CONNECTS		APPROX. SHIP WT. (LB.) <sup>1</sup>
					40°F	100°F	140°F										INLET	OUTLET	
THE80-130(A)	80	130,000	97%	GPH	382	153	109	69-5/8	26-1/4 <sup>1</sup>	66-1/8	12-3/4	64-5/8	64-13/16	62-13/16	66-5/8	2', 3', 4'	2" NPT	2" NPT	725
THE80-150(A)	80	150,000	94%	GPH	427	171	122	69-5/8	26-1/4 <sup>1</sup>	66-1/8	12-3/4	64-5/8	64-13/16	62-13/16	66-5/8	2', 3', 4'	2" NPT	2" NPT	725
THE80-200(A)	80	199,000	94%	GPH	569	228	163	69-5/8	26-1/4 <sup>1</sup>	66-1/8	12-3/4	64-5/8	64-13/16	62-13/16	66-5/8	2', 3', 4'	2" NPT	2" NPT	745
THE80-250(A)	80	250,000	92%	GPH	697	279	199	69-5/8	26-1/4 <sup>1</sup>	66-1/8	12-3/4	64-5/8	64-13/16	62-13/16	66-5/8	3', 4'	2" NPT	2" NPT	745
THE80-300(A)	80	300,000	92%	GPH	836	335	239	69-5/8	26-1/4 <sup>1</sup>	66-1/8	12-3/4	64-5/8	64-13/16	62-13/16	66-5/8	3', 4'	2" NPT	2" NPT	745
THE100-130(A)	100	130,000	95%	GPH	374	150	107	78-3/4	26-1/4 <sup>1</sup>	66	12-3/4	73-3/4	73-5/8	72	66-7/16	2, 3, 4	2" NPT	2" NPT	765
THE100-160(A)	100	160,000	95%	GPH	461	184	132	78-3/4	26-1/4 <sup>1</sup>	66	12-3/4	73-3/4	73-5/8	72	66-7/16	2, 3, 4	2" NPT	2" NPT	765
THE100-200(A)	100	199,000	95%	GPH	573	229	164	78-3/4	26-1/4 <sup>1</sup>	66	12-3/4	73-3/4	73-5/8	72	66-7/16	2, 3, 4	2" NPT	2" NPT	765
THE100-250(A)	100	250,000	93%	GPH	705	282	201	78-3/4	26-1/4 <sup>1</sup>	66	12-3/4	73-3/4	73-5/8	72	66-7/16	3, 4	2" NPT	2" NPT	795
THE100-300(A)	100	300,000	93%	GPH	845	338	242	78-3/4	26-1/4 <sup>1</sup>	66	12-3/4	73-3/4	73-5/8	72	66-7/16	3, 4	2" NPT	2" NPT	795
THE100-350(A)	100	350,000	92%	GPH	976	390	279	78-3/4	26-1/4 <sup>1</sup>	66	12-3/4	73-3/4	73-5/8	72	66-7/16	3, 4	2" NPT	2" NPT	800
THE100-400(A)	100	399,900	92%	GPH	1115	446	319	78-3/4	26-1/4 <sup>1</sup>	66	12-3/4	73-3/4	73-5/8	72	66-7/16	3, 4	2" NPT	2" NPT	800

<sup>1</sup>Weights listed are for non-ASME. Add 35 lbs. for ASME models.  
 130,000 - 199,000 Btu/h models are certified to be installed with 2" schedule 40 PVC, CPVC or ABS venting.  
 All models require a 120V power source.  
 Input rates 130-199, 1/2" gas inlet; input rates 250-400, 3/4" gas inlet.  
 See use and care manual for venting details.  
<sup>2</sup>Overall width is 27-5/16" due to exhaust cover.