



High Input Gas

550,000-715,000 Btu/h

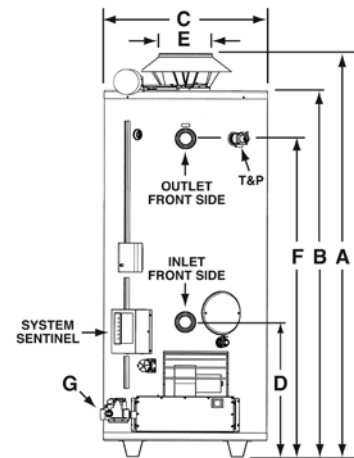
Perfect Fit Features

- Small jacket diameters
- Short floor-to-vent heights
- Multiple water connections
- System Sentinel™ LED diagnostic system

Standard Features

- Patented multiflue design
- Low profile automatic flue damper
- Specialized burner assembly
- Spark-to-pilot ignition system
- Full port, full flow brass drain valve
- Factory installed CSA/ASME rated T&P relief valve
- Handhole cleanout
- Round premix stainless steel burners

- Manual reset high limit
- Certified for a 150 PSI maximum working pressure (160 PSI for ASME models)
- Low NOx models: TX90-550(A) and TX90-640(A) meet 40 ng/J NOx compliance
- 3-Year limited tank warranty



RECOVERY CAPACITIES Recovery in U.S. Gallons/Hr. (GPH) at Various Temperature Rises.

MODEL NUMBER	INPUT BTU/H NATURAL & L.P.	THERMAL EFFICIENCY	40°F	50°F	60°F	70°F	80°F	90°F	100°F	110°F	120°F	130°F	140°F
TX90-550(A)	550,000 NAT	80%	1333	1067	889	762	667	593	533	485	444	410	381
TX90-640(A)	640,000 NAT	80%	1551	1241	1034	887	776	690	621	564	517	477	443
TX90-715(A)	715,000 NAT	80%	1733	1387	1156	991	867	770	693	630	578	533	495
TX90-500(A) LP	500,000 LP	80%	1212	970	808	693	606	539	485	441	404	373	346
TX90-600(A) LP	600,000 LP	80%	1455	1164	970	831	727	647	582	529	485	448	416
TX90-680(A) LP	680,000 LP	80%	1649	1319	1099	942	824	733	659	599	550	507	471

Recovery ratings are based on thermal efficiencies obtained in a CSA certified laboratory. These models have been tested according to ANSI Z21.10.3 test procedures, and exceed the thermal efficiency and standby loss requirements of ASHRAE (Part of the Federally mandated Energy Policy Act (EPact)). Also exceeds energy efficiency codes of all states. (A) indicates available ASME model.

DIMENSIONAL INFORMATION (All dimensions shown in inches)

MODEL NUMBER	A	B	C	D	E	F	G	WATER CONNECTIONS		APPROXIMATE SHIPPING WEIGHT	
								FRONT SIDE	REAR SIDE	STD.	ASME
TX90-550(A)	74.5	68	30	25	10	59	1	2	2	905	945
TX90-640(A)	74.5	68	30	25	10	59	1	2	2	905	945
TX90-715(A)	74.5	68	30	25	10	59	1	2	2	905	945
TX90-500(A) LP	74.5	68	30	25	10	59	1	2	2	905	945
TX90-600(A) LP	74.5	68	30	25	10	59	1	2	2	905	945
TX90-680(A) LP	74.5	68	30	25	10	59	1	2	2	905	945

All Models Require a 120V Power Source. (A) Suffix Indicates ASME Tank Construction Available.