



ASLE

SLIM-TEMP DISPLAY CASE UNIT COOLER ELECTRIC DEFROST



The ASLE is specifically designed for use in low temperature reach-in display cases. Its slim profile takes up less room and maximizes available shelf space.

ASLE 25-46 ASLE 35-70 ASLE 55-117
ASLE 25-58 ASLE 45-94 ASLE 65-150

Features:

- All models require externally equalized Thermostatic Expansion valves.
- ASLE capacity ratings at -10°F evaporator temperature.
- All Aluminum low silhouette housing.
- Fan motors are totally enclosed, permanently lubricated and thermally protected.
- Electrical connection made at internal terminal blocks located at end opposite refrigerant connections.
- UL & cUL listed. NSF approved.



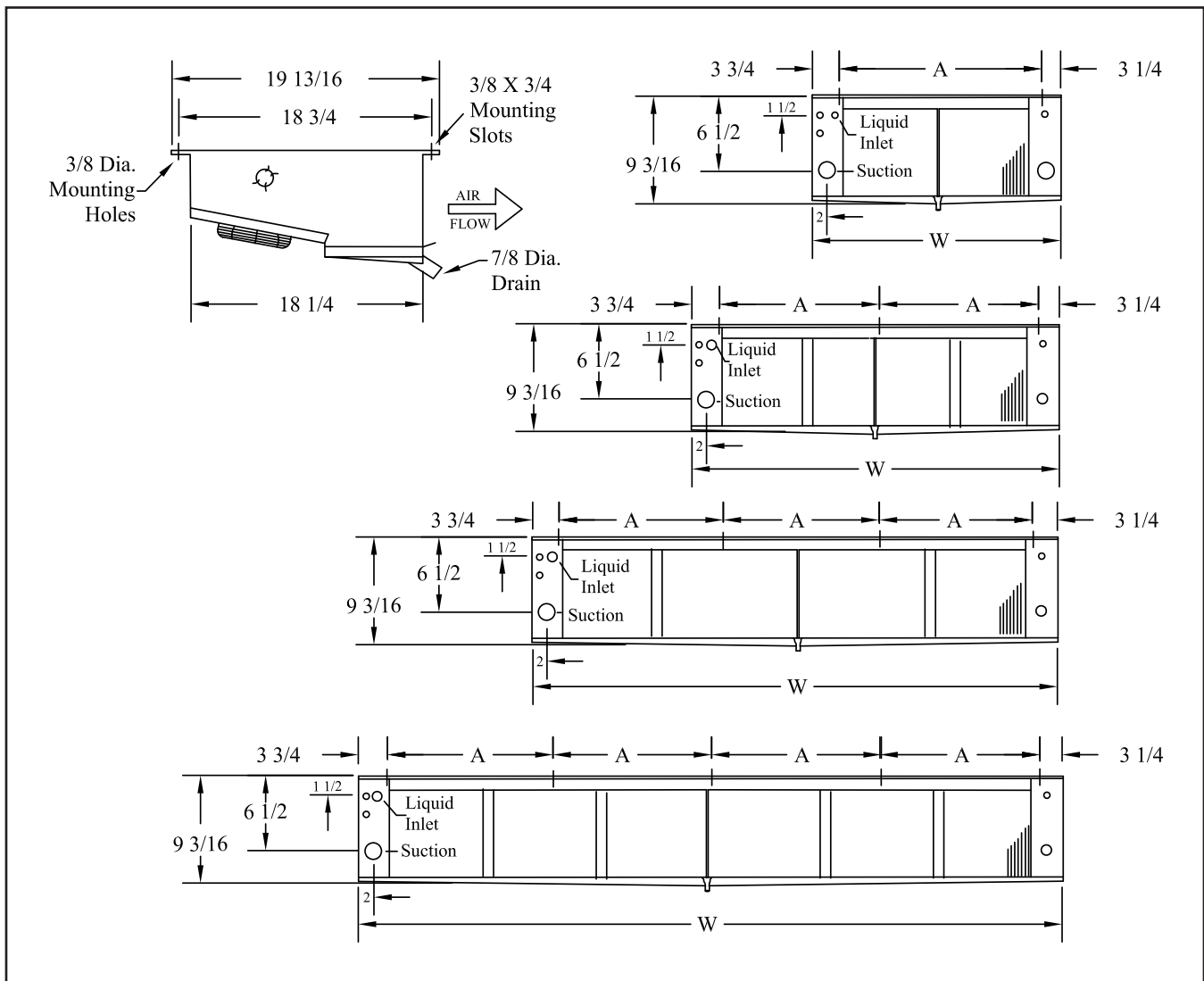
ColdZone
8101 E. Kaiser Blvd. Suite 110
Anaheim CA. 92808
PH. 800-722-2653 • <http://coldzone.htpgusa.com>

SLIM-TEMP DISPLAY CASE UNIT COOLER

Specifications - Electric Defrost Models

Model Number	BTUH 10° TD	Fan Motors	CFM	Shaded Pole Motor Amps 230V /1	EC Motor Amps 230V/1	Defrost 230V/1		Connections		Dimensions*		Ship WT (Lbs)
						Watts	Amps	Liquid	Suction	A	W	
ASLE 25-46	4,600	2-16 watt	950	1.1	0.58	1,300	5.7	1/2FN	7/8 ODS	39	46-3/16	83
ASLE 25-58	5,800	2-16 watt	1,000	1.1	0.58	1,970	8.6	1/2FN	7/8 ODS	49	56-3/16	105
ASLE 35-70	7,000	3-16 watt	1,425	1.7	0.87	1,850	8.1	1/2FN	7/8 ODS	31	69-3/16	125
ASLE 45-94	9,400	4-16 watt	1,900	2.2	1.16	2,400	10.5	1/2FN	1-1/8 ODS	28 3/4	92-3/16	151
ASLE 55-117	11,700	5-16 watt	2,375	2.8	1.45	3,000	13.1	1/2FN	1-1/8 ODS	36	115-3/16	185
ASLE 65-150	15,000	6-16 watt	2,850	3.3	1.74	3,500	15.2	1/2FN	1-1/8 ODS	32 3/4	138-3/16	222

* All dimensions are in inches.



Due to continuing product development, specifications are subject to change without notice.