



ASLA

SLIM-TEMP DISPLAY CASE UNIT COOLER AIR DEFROST



The ASLA is specifically designed for use in medium temperature reach-in display cases. Its slim profile takes up less room and maximizes available shelf space.

ASLA 25-48 ASLA 35-73 ASLA 55-122
ASLA 25-61 ASLA 45-98 ASLA 65-158

Features:

- All models require externally equalized Thermostatic Expansion valves.
- ASLA capacity ratings at +25°F evaporator temperature.
- All Aluminum low silhouette housing.
- Fan motors are totally enclosed, permanently lubricated and thermally protected.
- Electrical connection made at internal terminal blocks located at end opposite refrigerant connections.
- Available with optional Protective Coil Coating.
- UL & cUL listed. NSF approved.



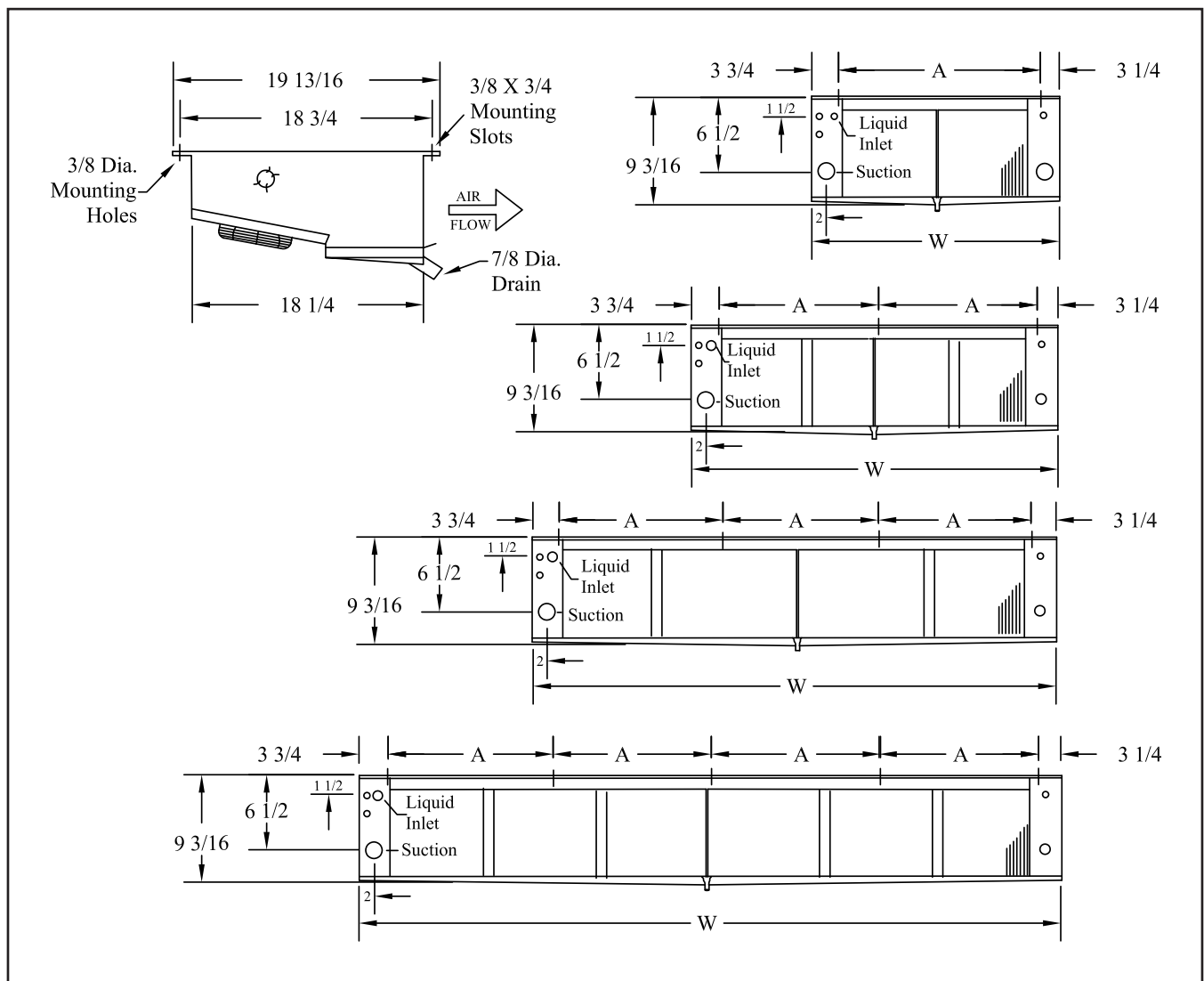
ColdZone
8101 E. Kaiser Blvd. Suite 110
Anaheim CA. 92808
PH. 800-722-2653 • <http://coldzone.htpgusa.com>

SLIM-TEMP DISPLAY CASE UNIT COOLER

Specifications - Air Defrost Models

Model Number	BTUH 10° TD	Fan Motors	CFM	Shaded Pole Motor Amps		EC Motor Amps		Connections		Dimension*		Ship Wt. (lbs)
				115/1	230/1	115/1	230/1	Liquid	Suction	A	W	
ASLA 25-48	4,800	2-16 watt	950	2.2	1.1	1.16	0.58	1/2 FN	7/8 ODS	39	46-3/16	83
ASLA 25-61	6,400	2-16 watt	1,000	2.2	1.1	1.16	0.58	1/2 FN	7/8 ODS	49	56-3/16	105
ASLA 35-73	7,300	3-16 watt	1,425	3.3	1.7	1.74	0.87	1/2 FN	7/8 ODS	31	69-3/16	125
ASLA 45-98	9,800	4-16 watt	1,900	4.4	2.2	2.32	1.16	1/2 FN	1-1/8 ODS	28-1/4	92-3/16	151
ASLA 55-122	12,200	5-16 watt	2,375	5.5	2.8	2.9	1.45	1/2 FN	1-1/8 ODS	36	115-3/16	185
ASLA 65-158	15,800	6-16 watt	2,850	6.6	3.3	3.48	1.74	1/2 FN	1-1/8 ODS	32-3/4	138-3/16	222

* All dimensions are in inches.



Due to continuing product development, specifications are subject to change without notice.