



Wedge-Temp
**REACH-IN
UNIT COOLER**



Air Defrost for reach-ins, back-bars, beverage cases, salad cases and other applications above 34° F.

Heavy-gauge, all Aluminum housing; front panel and drain-pan assembly hinged to provide easy access. These air defrost units are available with our specially formulated epoxy coil coating.



ColdZone
8101 E. Kaiser Blvd. Suite 110
Anaheim CA. 92808
PH. 800-722-2653 • <http://coldzone.htpgusa.com>

REACH-IN UNIT COOLER

Specifications

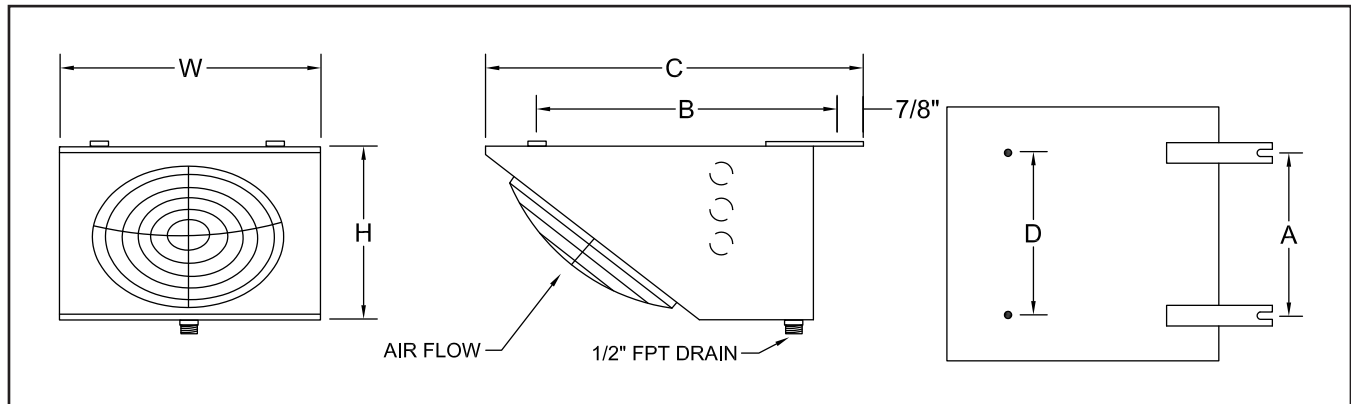
MODEL	BTU/HR. RATING		CFM	FAN AND MOTOR			
	10° T.D.	15° T.D.		Fan	Motor	115V Motor Amps ³	RPM
WE 17-12	1200	1440	220	8"	9W	0.6	1550
WE 17-15	1500	1800	260	8"	9W	0.6	1550
WE 17-18	1800	2160	290	8"	9W	0.6	1550
WE 17-25	2500	3000	450	10"	9W	0.6	1550
WE 17-35	3500	4200	520	10"	16W	1.1	1550
WE 17-45	4500	5400	810	12"	1/20	1.7	1550
WE 18-55	5500	6600	780	12"	1/20	1.7	1550

- NOTES: 1. Standard motors are life lubricated, 115 volts.
 2. Knock outs are provided on both sides.
 3. 230V motor amps equals 115V amps x 0.5

Dimensions

MODEL	A	B	C	D	F	H	W	Liquid Conn.	Suction Conn.	Weight (lbs.)
WE 17-12	12-3/4"	13-5/8"	15-13/16"	11-7/16"	1-1/4"	8-5/16"	15-1/4"	1/2" FN	1/2" OD	16
WE 17-15	12-3/4"	13-5/8"	15-13/16"	11-7/16"	1-1/4"	8-5/16"	15-1/4"	1/2" FN	1/2" OD	19
WE 17-18	15-3/4"	13-5/8"	15-13/16"	14-1/2"	1-1/4"	8-5/16"	17-3/4"	1/2" FN	1/2" OD	22
WE 17-25	18-3/4"	14-5/8"	16-13/16"	17-1/2"	1-1/4"	8-5/16"	19-7/8"	1/2" FN	1/2" OD	29
WE 17-35	21-3/4"	15-5/8"	17-7/8"	20-1/2"	1-1/4"	9-1/2"	22-7/8"	1/2" FN	1/2" OD	36
WE 17-45	24-3/4"	15-5/8"	20-1/2"	23-5/8"	1-7/8"	9-5/8"	26-3/4"	1/2" FN	1/2" OD	57
WE 18-55	24-3/4"	15-5/8"	20-1/2"	23-5/8"	1-7/8"	9-5/8"	26-3/4"	1/2" FN	1/2" OD	65

* All dimensions are in inches.



Due to continuing product development, specifications are subject to change without notice.